



Claiborne Parish Hazard Mitigation Plan Update Public Meeting

March 18, 2024

Homer, LA

Agenda



Introductions



**Hazard Mitigation
Overview**



Planning Process



**Risk Assessment
Maps**



**Public Outreach
Activities**

Introductions

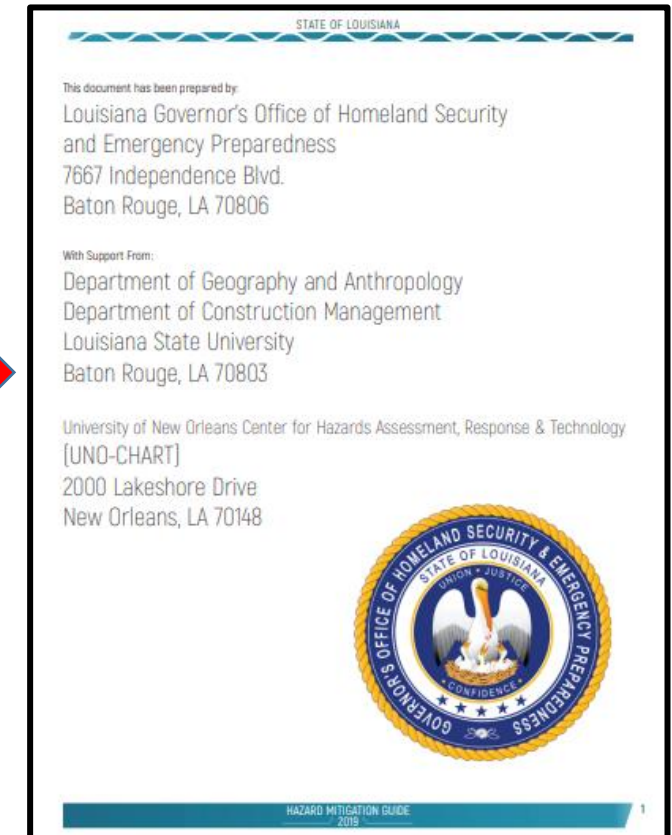
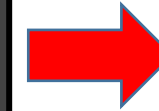
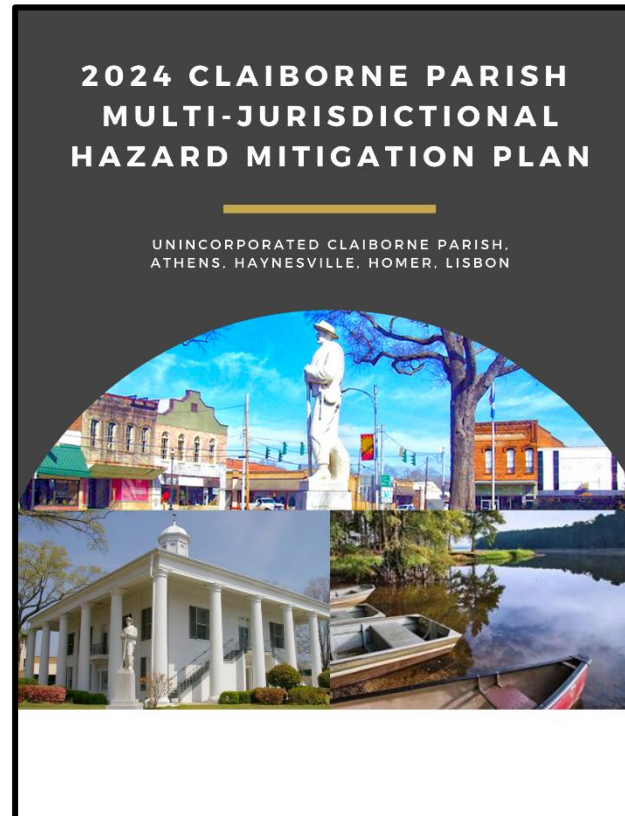
- **Stephenson Disaster Management Institute (SDMI) at LSU**
 - Chris Rippetoe – Hazard Mitigation Program Manager
 - Jason Martin – Emergency Management Analyst
- **Claiborne Parish OHSEP Director/Parish Staff**
- **Governor's Office of Homeland Security and Emergency Preparedness**
 - Jeffrey Giering – State Hazard Mitigation Officer
 - Marion Pearson – Hazard Mitigation Planner

Who is SDMI?

- Stephenson Disaster Management Institute (SDMI) at Louisiana State University
- Non-Academic, Applied Research Unit on campus
- Specialize in providing programmatic support and decision making tools for state and local emergency managers
 - Hazard Mitigation Plans
 - Emergency Operations Plans
 - Geographic Information Systems
 - Application Development
 - Data Visualization
 - Aerial Imagery Collection/Processing



Why We're Here

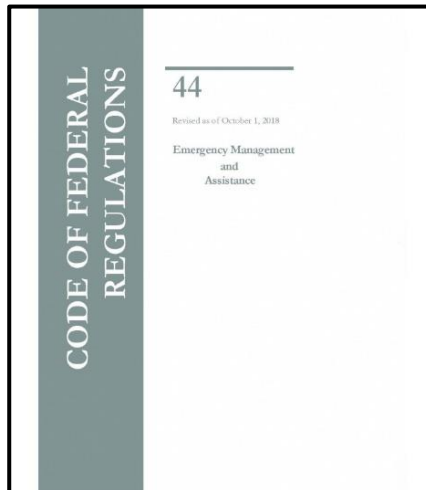


Hazard Mitigation Is...

- Any action taken to reduce long term risk to life and property;
- On-going process that occurs before, during, and after disasters;
- Mitigation actions help prevent damage to a community's infrastructure, economic, cultural and environmental assets;
- Minimize operational downtime and accelerate recovery of government and the private sector after an event;
- ***Implementation of mitigation actions leads to building stronger, safer and smarter!***

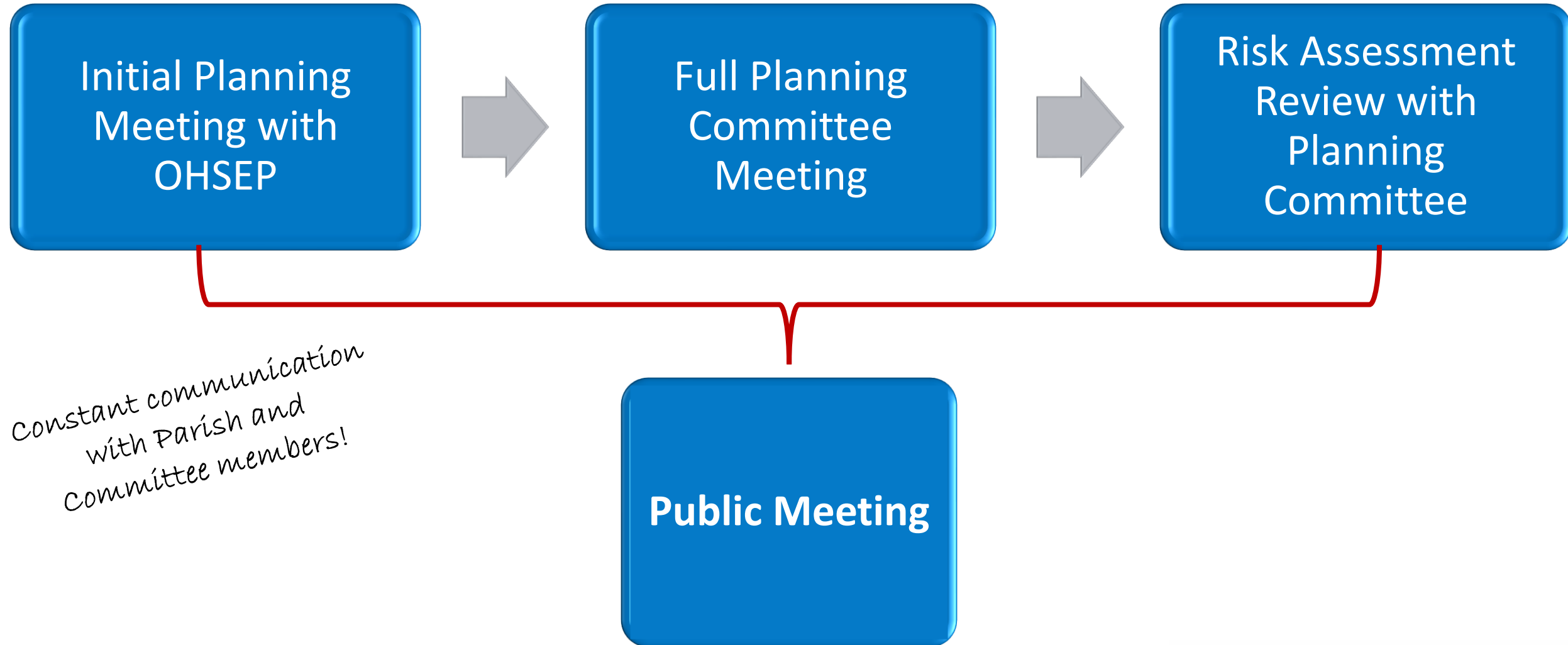
Why the Plan is Required

- Disaster Mitigation Act of 2000 (DMA 2000)
 - Section 322 of the Act specifically addresses mitigation planning and requires state and local governments to prepare multi-hazard mitigation plans as a precondition for receiving FEMA mitigation project grants.
- Title 44 Code of Regulations (CFR) §201.6
 - Meet federal requirements for approval and eligibility for FEMA Hazard Mitigation Assistance grant programs.

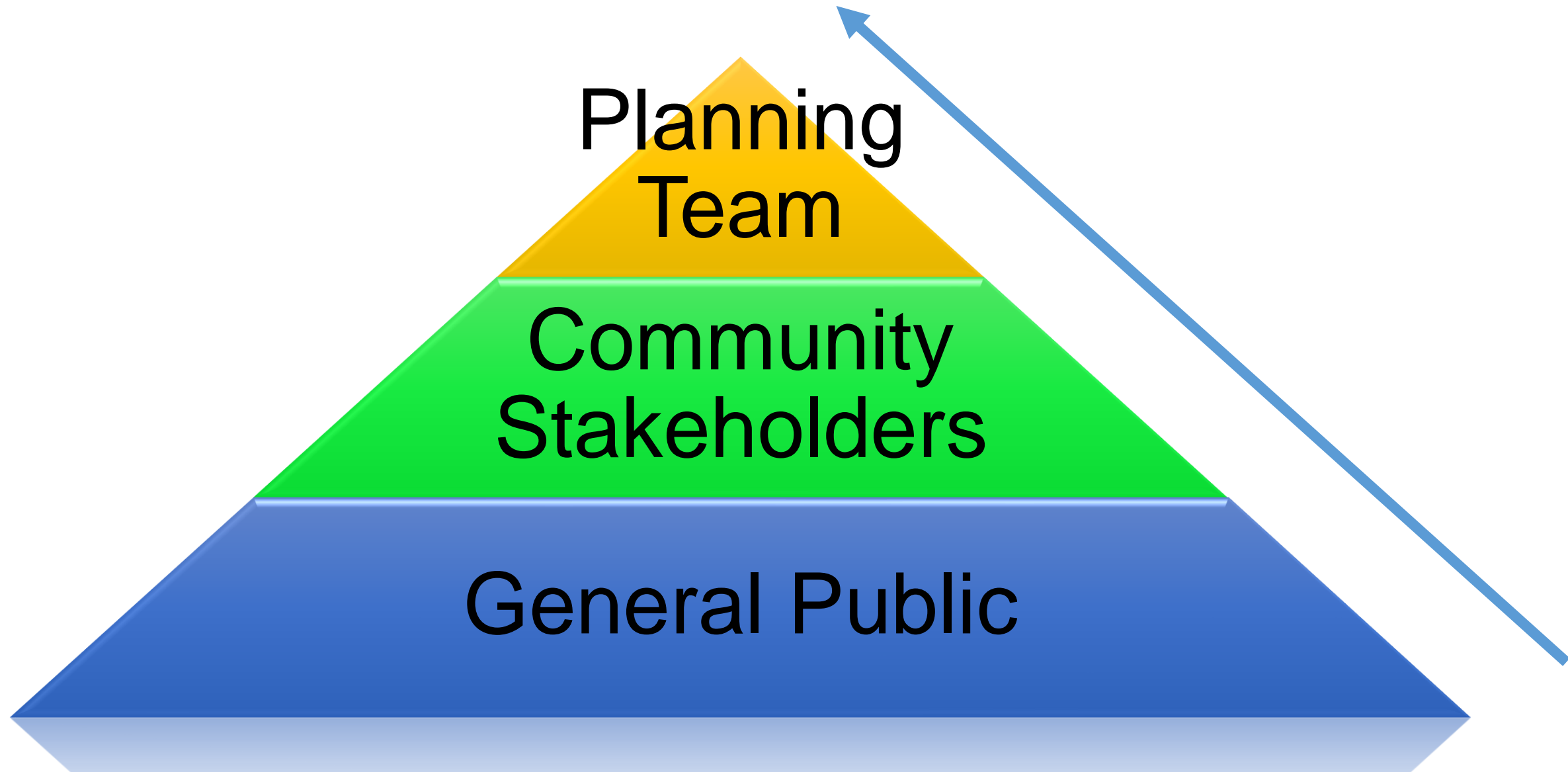


- The approved Claiborne Parish Hazard Mitigation Plan will allow for distribution of HM funding following future disasters.

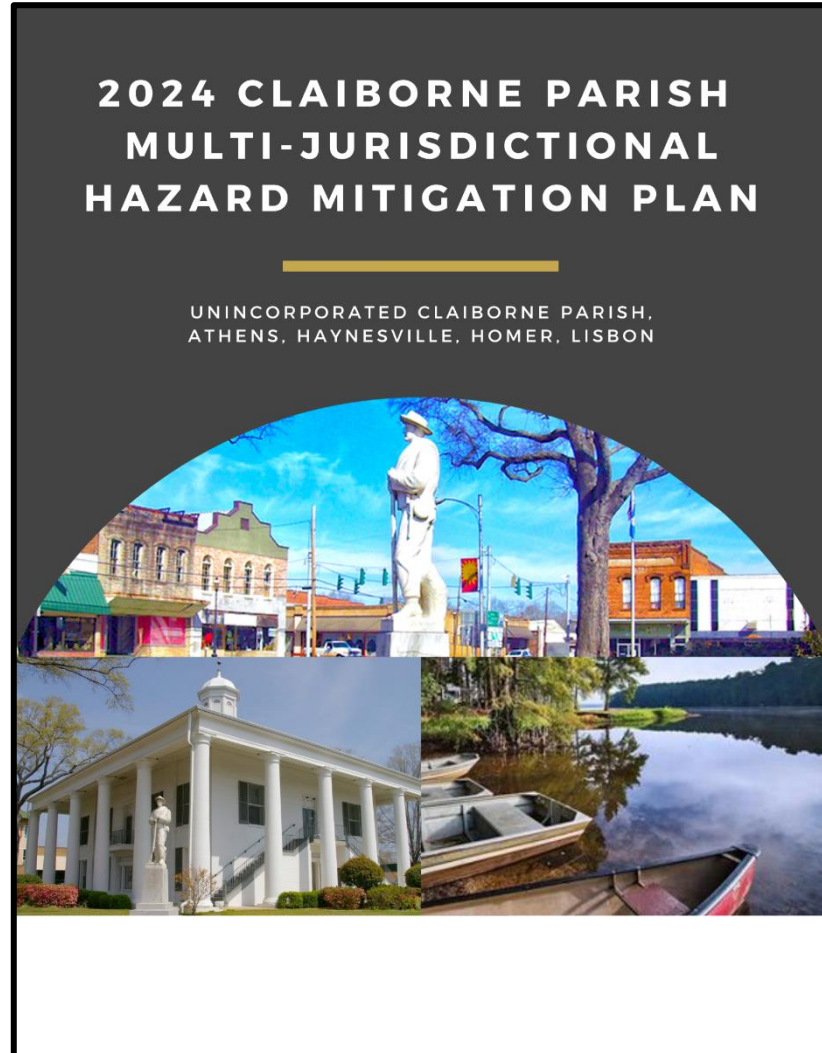
Planning Process to Date



Collaborative Planning Approach



Hazard Mitigation Plan Development



Plan Layout

- **Section 1: Introduction**
 - Updated parish description
 - Updated demographics
 - Economics
- **Section 2: Hazard Identification and Parish-wide Risk Assessment**
- **Section 3: Capability Assessment**
- **Section 4: Mitigation Strategies**
 - New actions
 - Action updates
 - Survey results

Plan Layout

- **Appendix A:** Planning Process
- **Appendix B:** Plan Maintenance
- **Appendix C:** Parish Critical Facilities
- **Appendix D:** Plan Adoption
- **Appendix E:** State Required Worksheets

Hazard Identification and Risk Assessment

- The plan includes descriptions of the natural hazards that affect the jurisdictions in the planning area.
- The hazards identification includes the following:
 - *locations affected*
 - *extent or strength*
 - *previous occurrences*
 - *probability of future events*

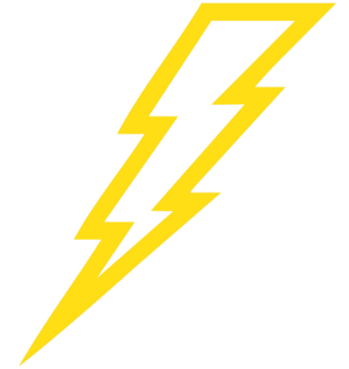
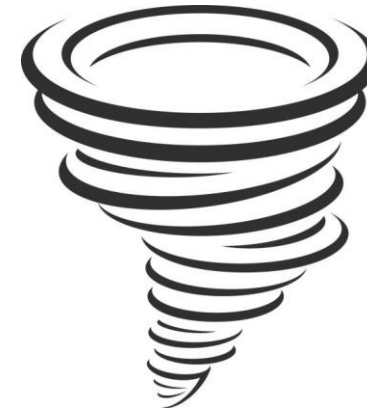


Hazard Identification And Risk Assessment

- Based on Currently Profiled Prevalent Natural Hazards
- Identify Any New Hazards
- Previous Occurrences
- Impact from Events
- Probability of Future Events
- Critical Facilities
- Future Development Trends
- Future Hazard Impacts
- Zoning and Land Use

Hazard Identification And Risk Assessment

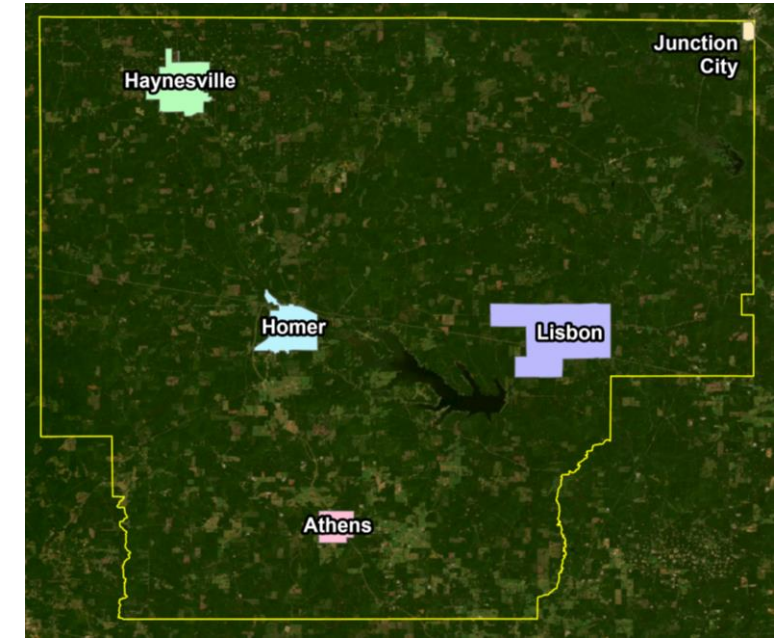
- Dam Failure
- Drought
- Excessive Heat
- Flooding
- Thunderstorms
- Tornadoes
- Tropical Cyclones
- Wildfires
- Winter Weather



Risk Matrix for Claiborne Parish

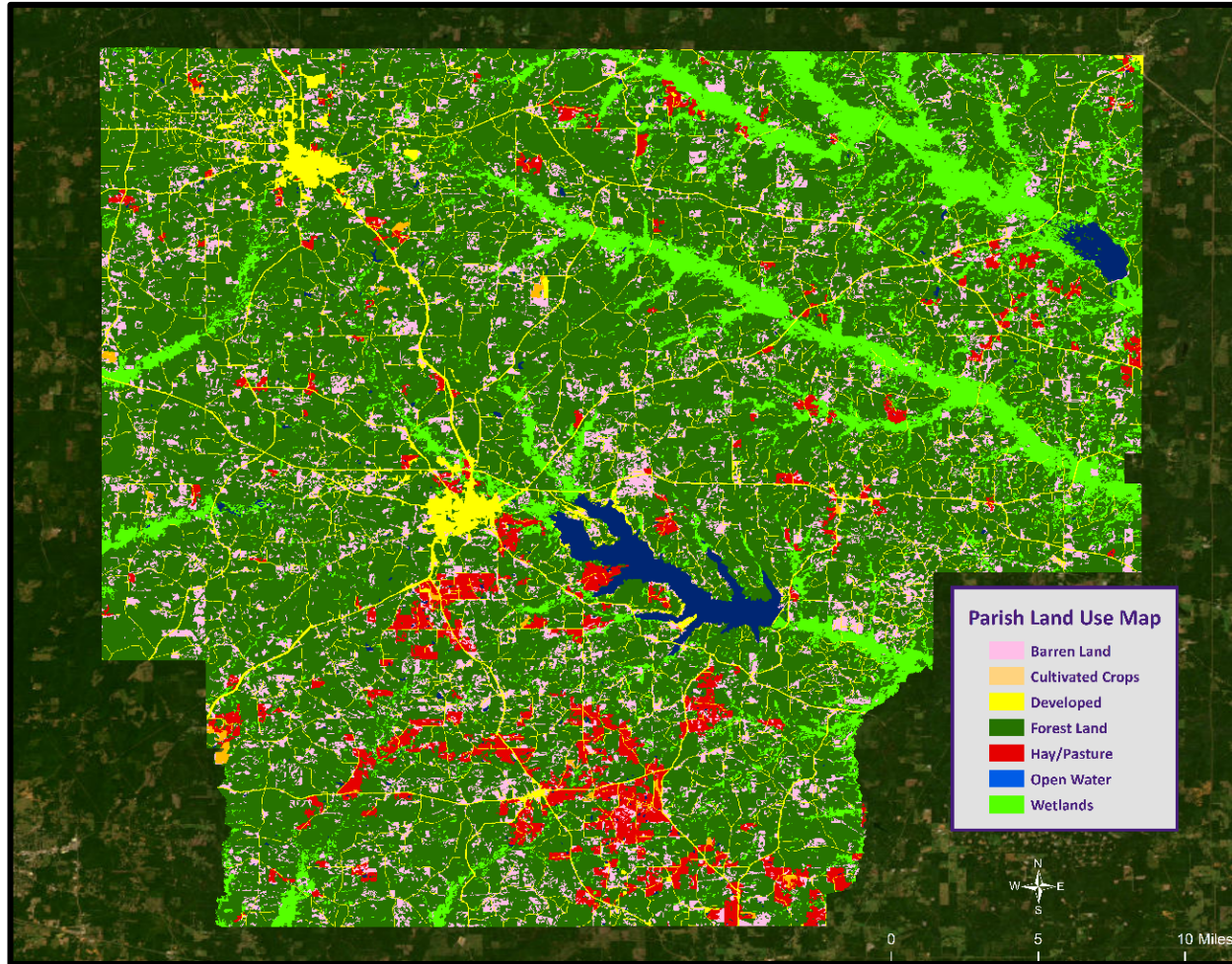
Hazard	Probability	Impact	Spatial Extent	Warning Time	Duration	Overall Risk
Dam Failure	1	3	4	1	3	2.4
Drought	3	2	4	2	3	2.8
Excessive Heat	3	2	4	1	2	2.5
Flooding	3	4	3	4	3	3.4
Thunderstorms - Hail	4	2	3	3	1	2.7
Thunderstorms - Lightning	3	2	2	3	1	2.25
Thunderstorms - Wind	4	2	3	3	1	2.7
Tornadoes	4	3	2	4	3	3.2
Tropical Cyclones	3	4	4	1	4	3.3
Wildfires	1	3	4	1	2	2.25
Winter Weather	3	4	4	1	2	3

Risk Factor	PRI Range
High Risk	2.5 to 4.0
Moderate Risk	2.0 to 2.4
Low Risk	0 to 1.9



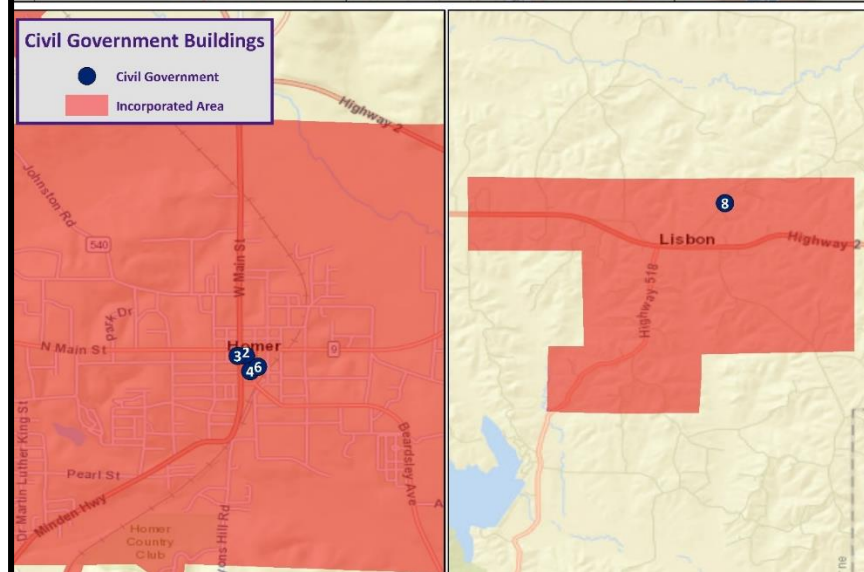
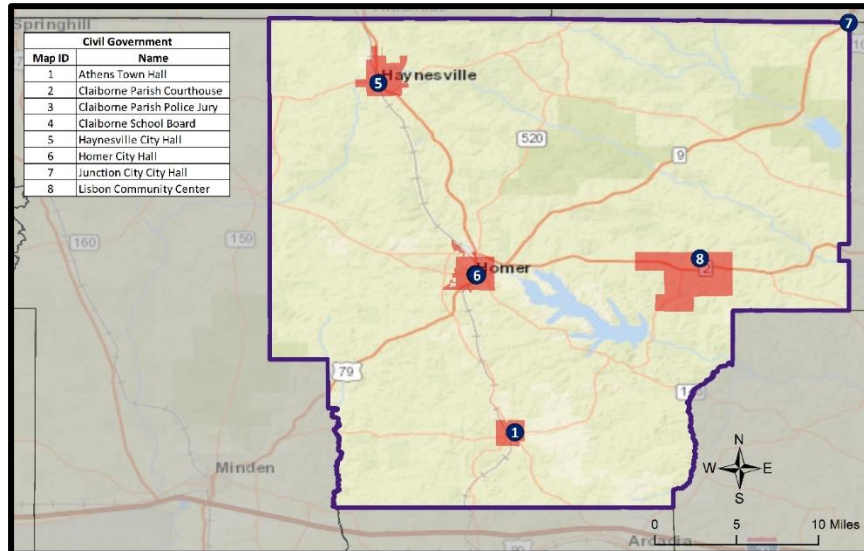
Risk Assessment Maps

Claiborne Parish Land Use

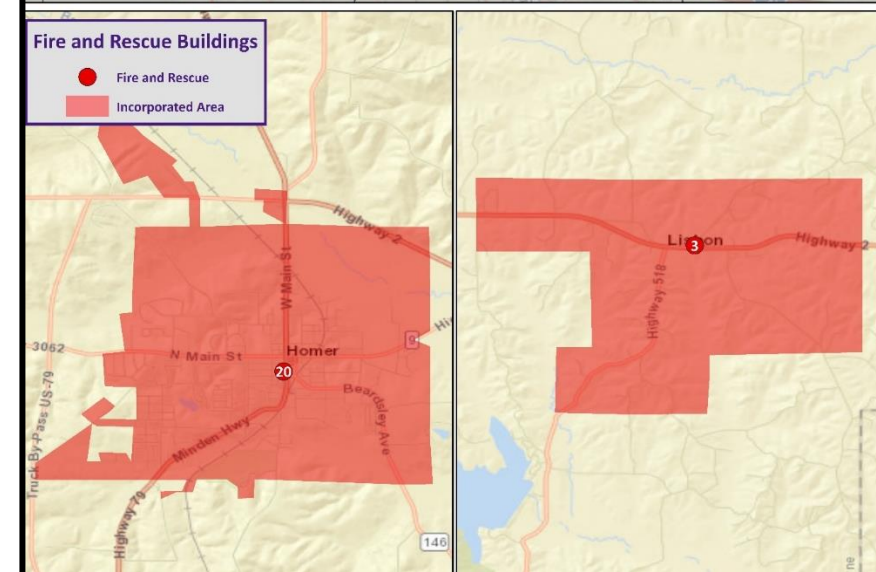
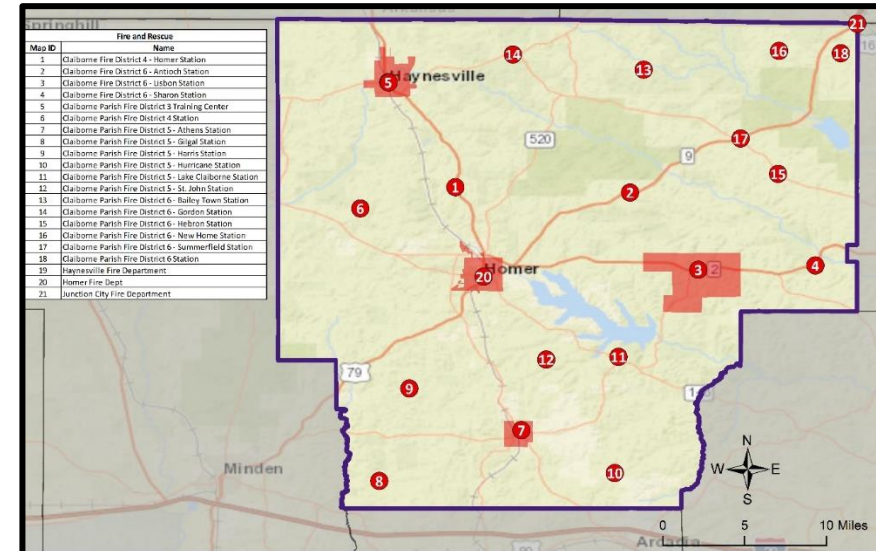


Land Use	Acres	Percentage
Agricultural Land, Cropland, and Pasture	67,511	14%
Wetlands	51,121	10%
Forest Land (Not including forested wetlands)	333,475	68%
Urban/Development	29,869	6%
Water	8,345	2%

Claiborne Parish Critical Facilities

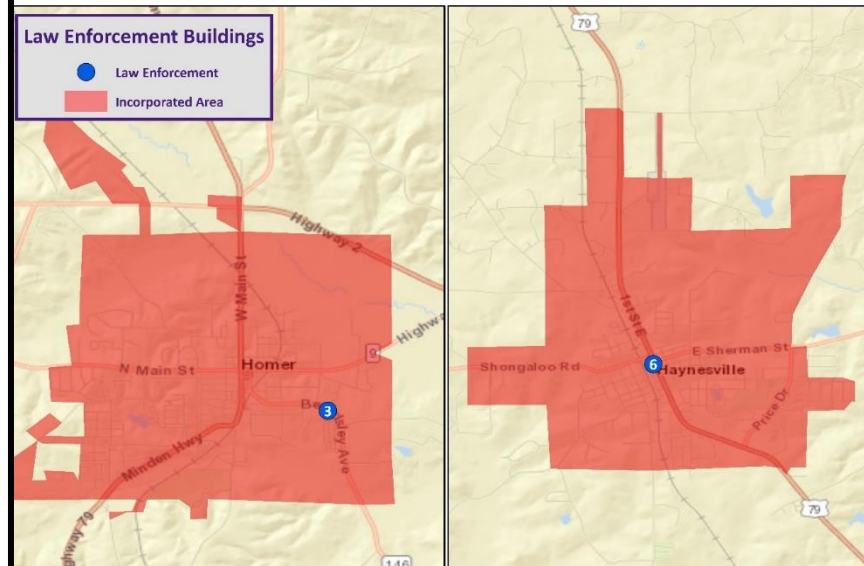
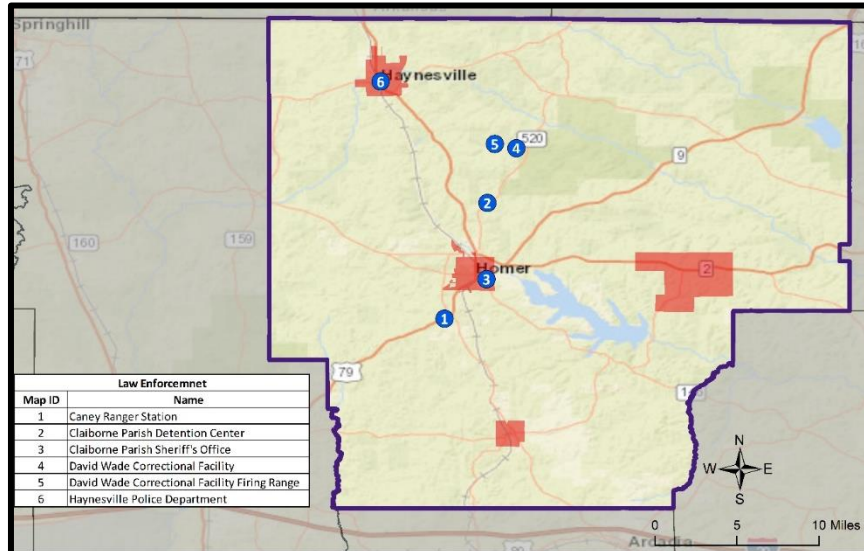


Civil Government

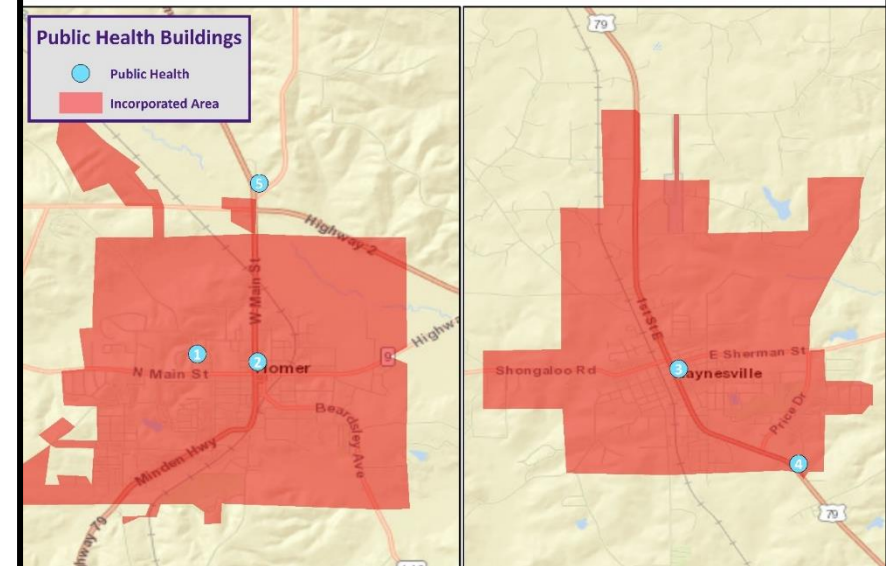
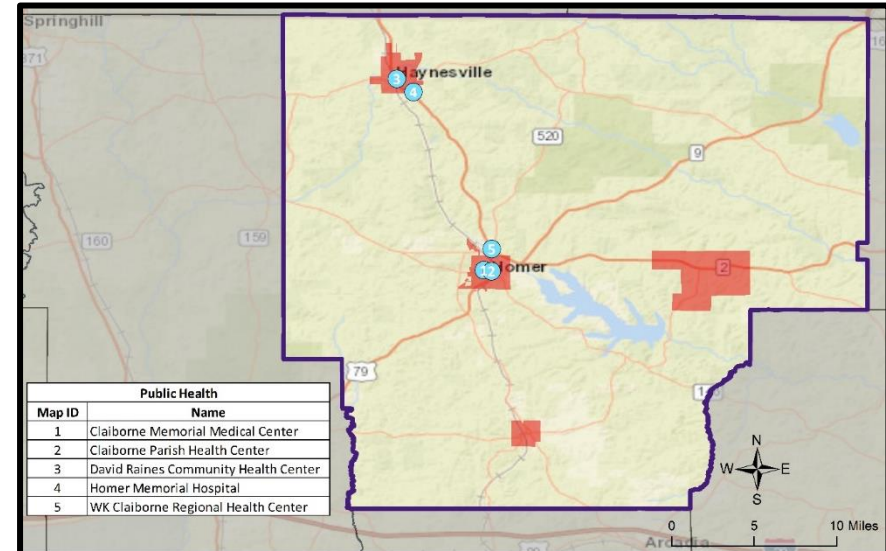


Fire & SAR

Claiborne Parish Critical Facilities

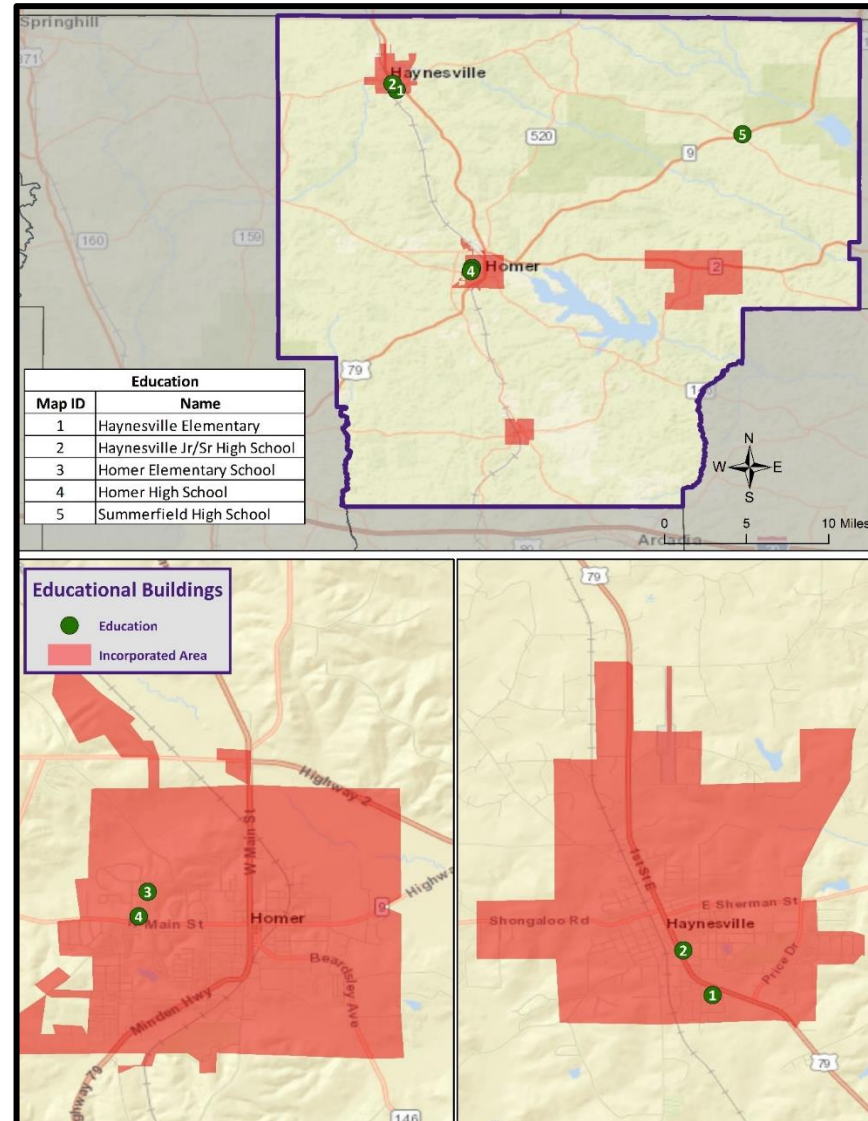


Law Enforcement



Public Health

Claiborne Parish Critical Facilities



Public Education

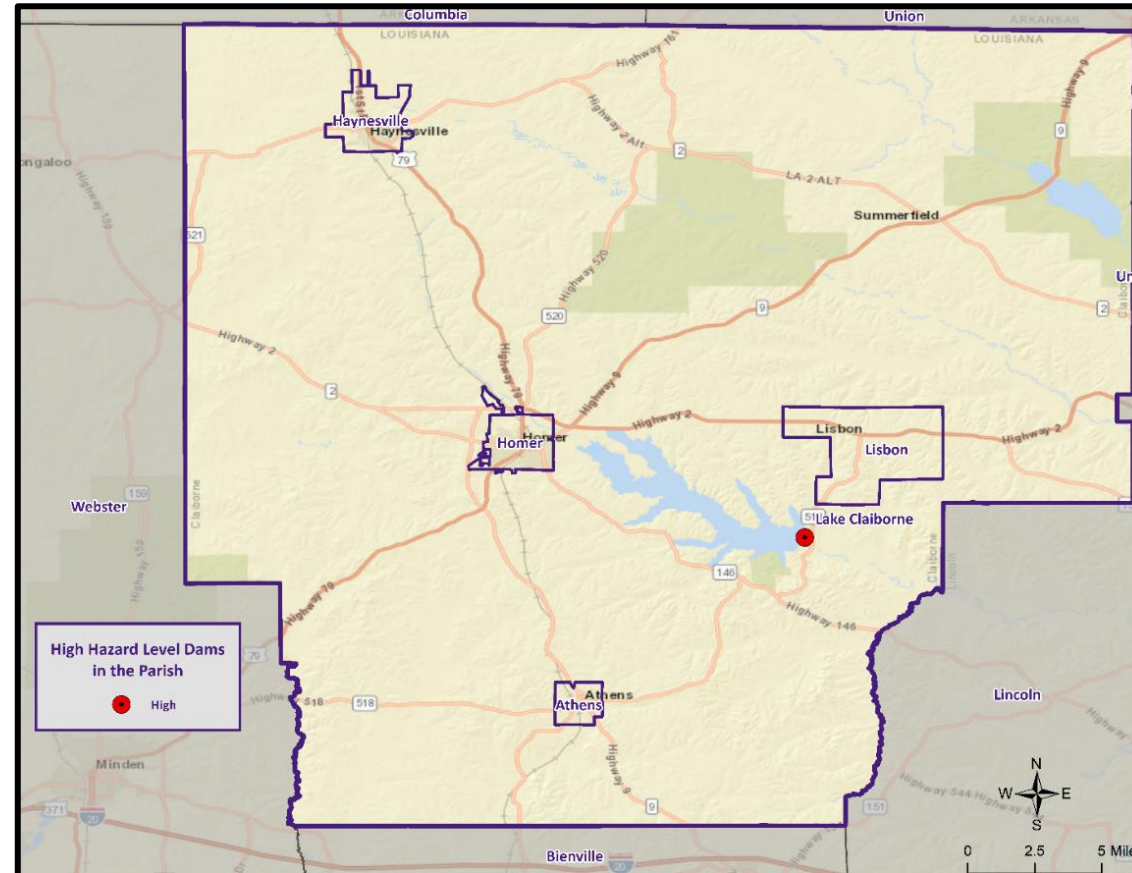
Dam Failure



- A dam is a barrier across flowing water that obstructs, redirects, or slows the flow, often creating a reservoir or lake.
- There are five main causes of dam failure:
 - ✓ Overtopping
 - ✓ Foundation Defects
 - ✓ Cracking
 - ✓ Inadequate maintenance and upkeep
 - ✓ Piping



Location of Dams in Claiborne Parish



System	Rating	Height (ft)	Storage (Acre-Feet)	Dam Type	Last Inspection Date
Lake Claiborne (LA00011)	High	82	200,000	Earth	7/11/2022

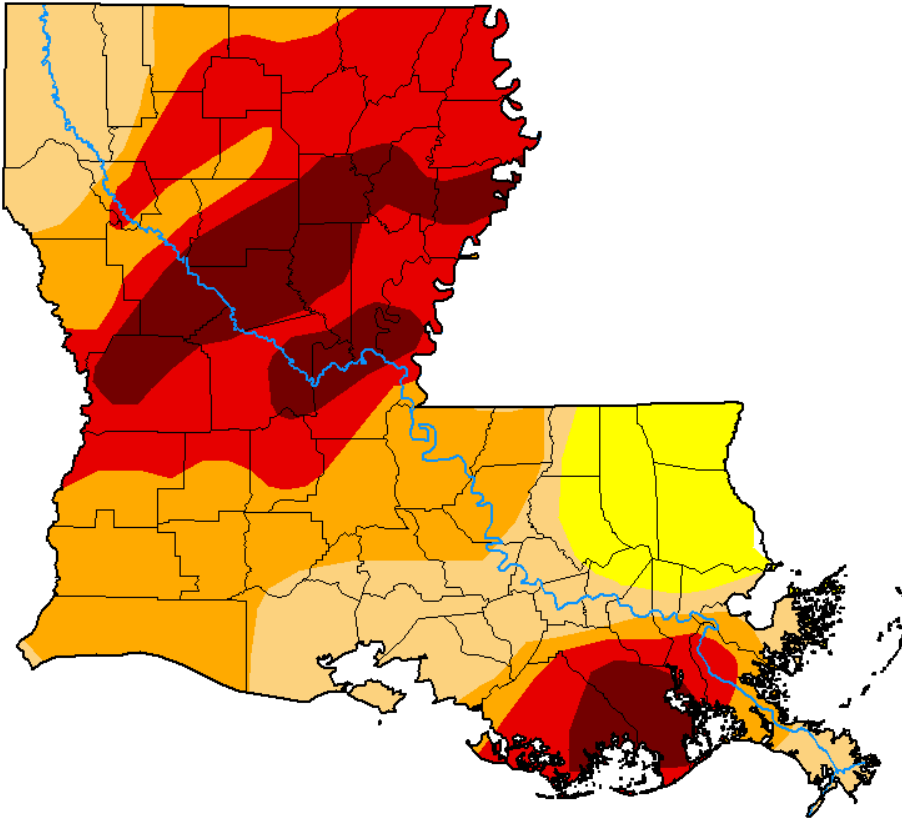
Drought



- A drought is a deficiency in water availability over an extended period of time, caused by precipitation totals and soil water storages that do not satisfy the environmental demand for water either by evaporation or transpiration through plant leaves.
- There are four classes of drought:
 - ✓ Meteorological Drought
 - ✓ Hydrologic Drought
 - ✓ Agricultural Drought
 - ✓ Socioeconomic Drought
- Generally, the entire parish will be affected by drought
 - Not limited to one particular location within the parish

State-wide Drought Monitor

January 9, 2024

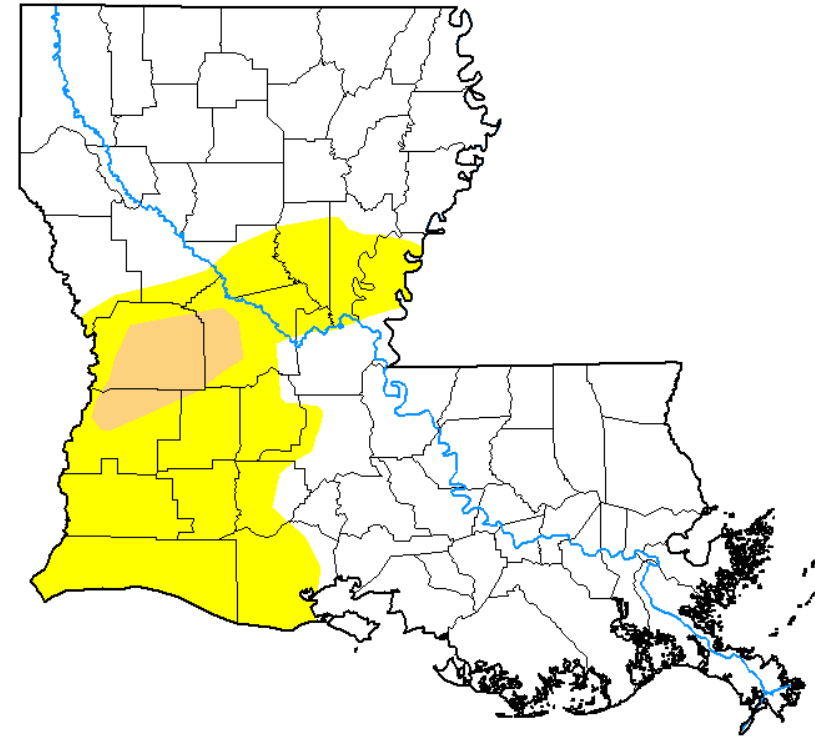


U.S. Drought Monitor
Louisiana

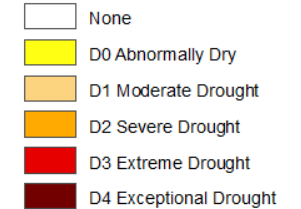
March 12, 2024

(Released Thursday, Mar. 14, 2024)

Valid 8 a.m. EDT



Intensity:



The Drought Monitor focuses on broad-scale conditions. Local conditions may vary. For more information on the Drought Monitor, go to <https://droughtmonitor.unl.edu/About.aspx>

Author:

Curtis Riganti
National Drought Mitigation Center



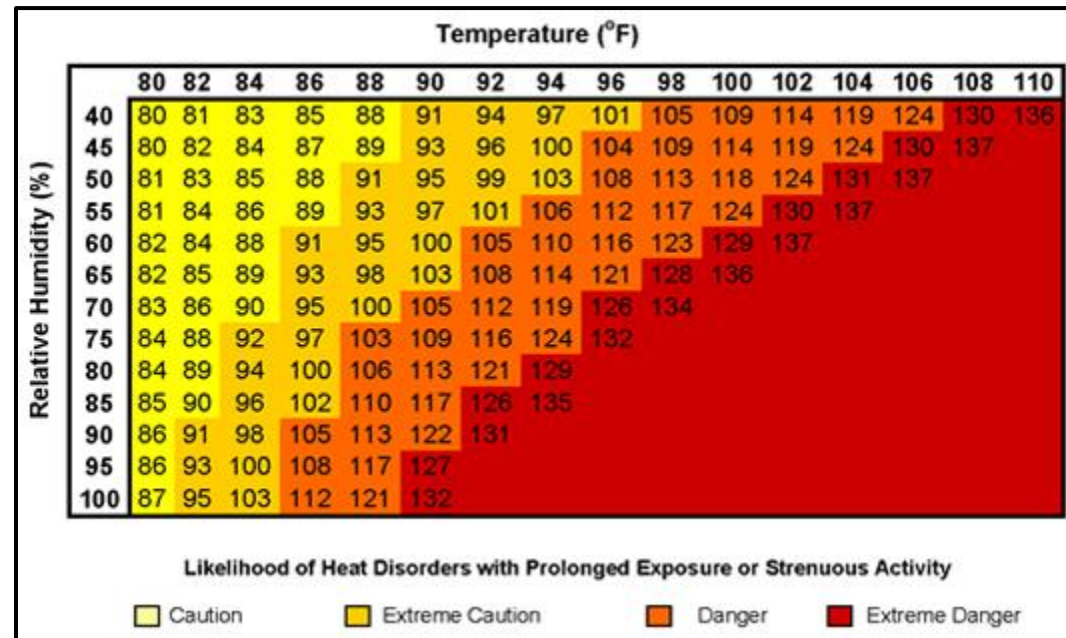
droughtmonitor.unl.edu

Excessive Heat

- No universal definition for Excessive Heat
- Often seen in conjunction with regional drought
- Heat waves are easier to define
 - At least 5 consecutive days where the daily max temperature exceeds the average max temperature by 9 degrees



Excessive Heat



Heat Index	Risk Level	Protective Measures
Less than 91°F	Lower (Caution)	Basic heat safety and planning.
91°F to 103°F	Moderate	Implement precautions and heighten awareness.
103°F to 115°F	High	Additional precautions to protect workers.
Greater than 115°F	Very High to Extreme	Triggers even more aggressive protective measures.

Flooding

- A flood is the overflow of water onto land that is usually not inundated.
- The National Flood Insurance Program defines a flood as “a general and temporary condition of partial or complete inundation of two or more acres of normally dry land area or of two or more properties from overflow of inland or tidal waves, unusual and rapid accumulation or runoff of surface waters from any source, mudflow, or collapse or subsidence of land along the shore of a lake or similar body of water as a result of erosion or undermining caused by waves or currents of water exceeding anticipated cyclical levels that result in a flood as defined above.”



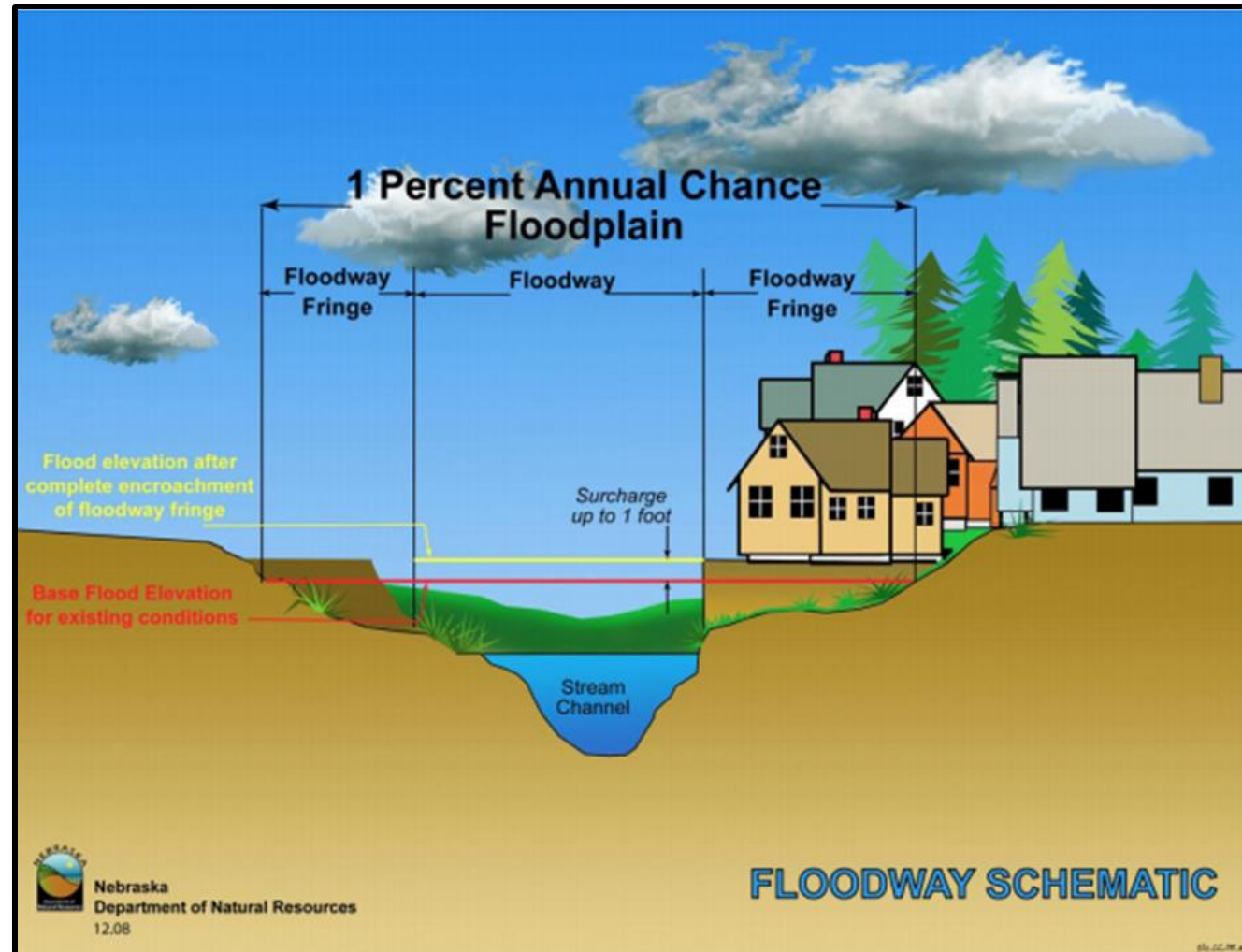
Flooding



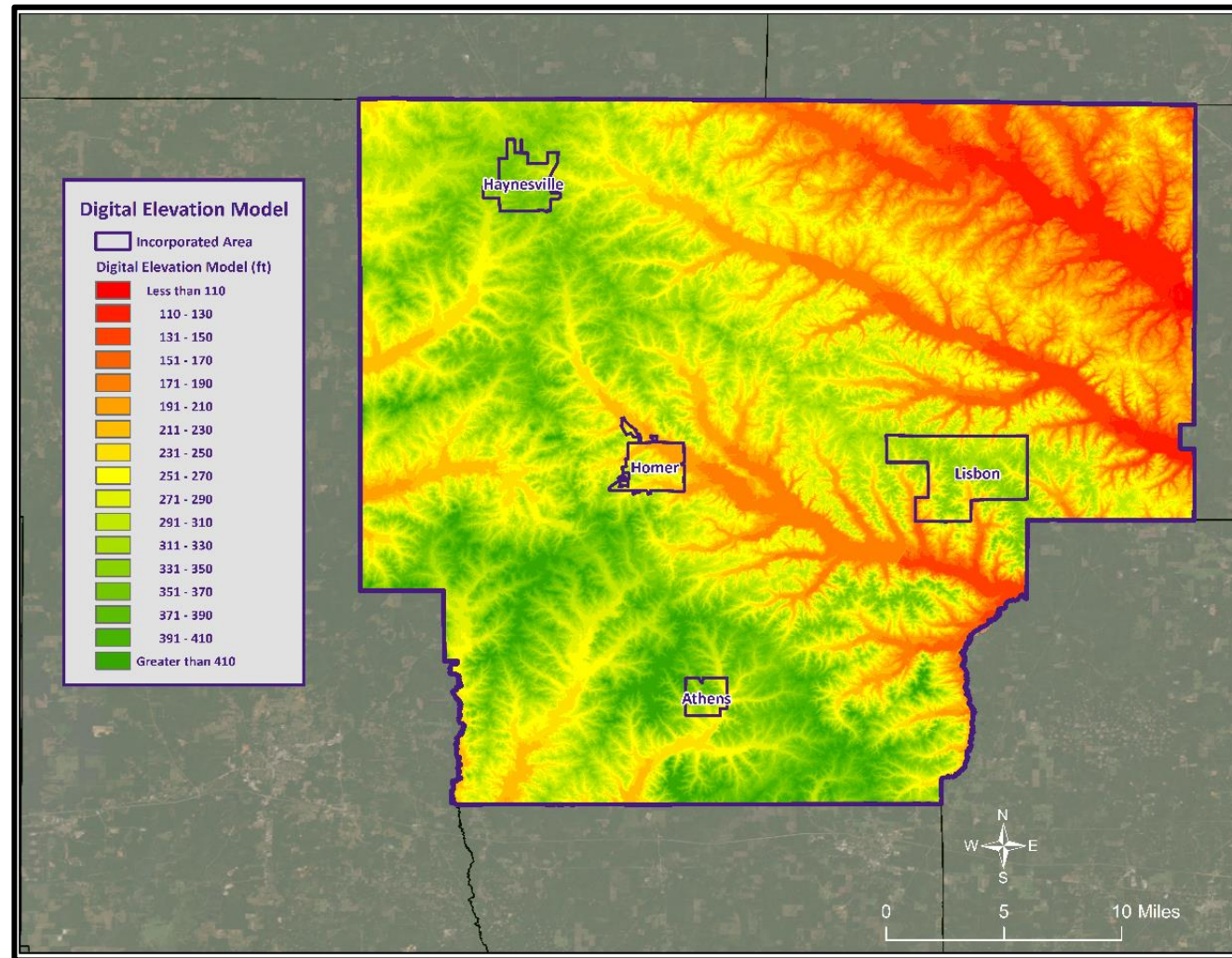
In Louisiana, six specific types of flooding are of main concern:

- Riverine
- Flash
- Ponding
- Backwater
- Urban
- Coastal

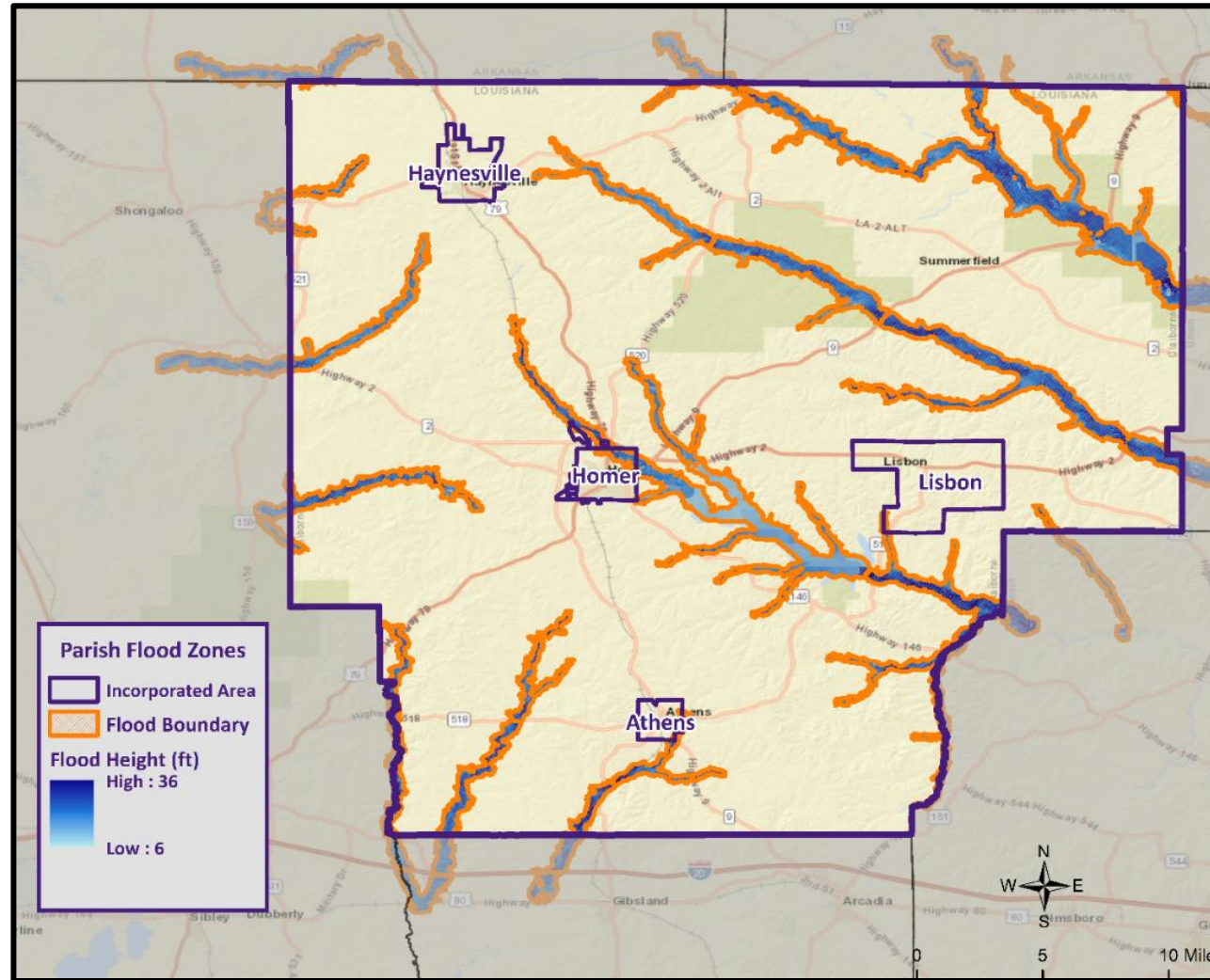
Floodway Diagram



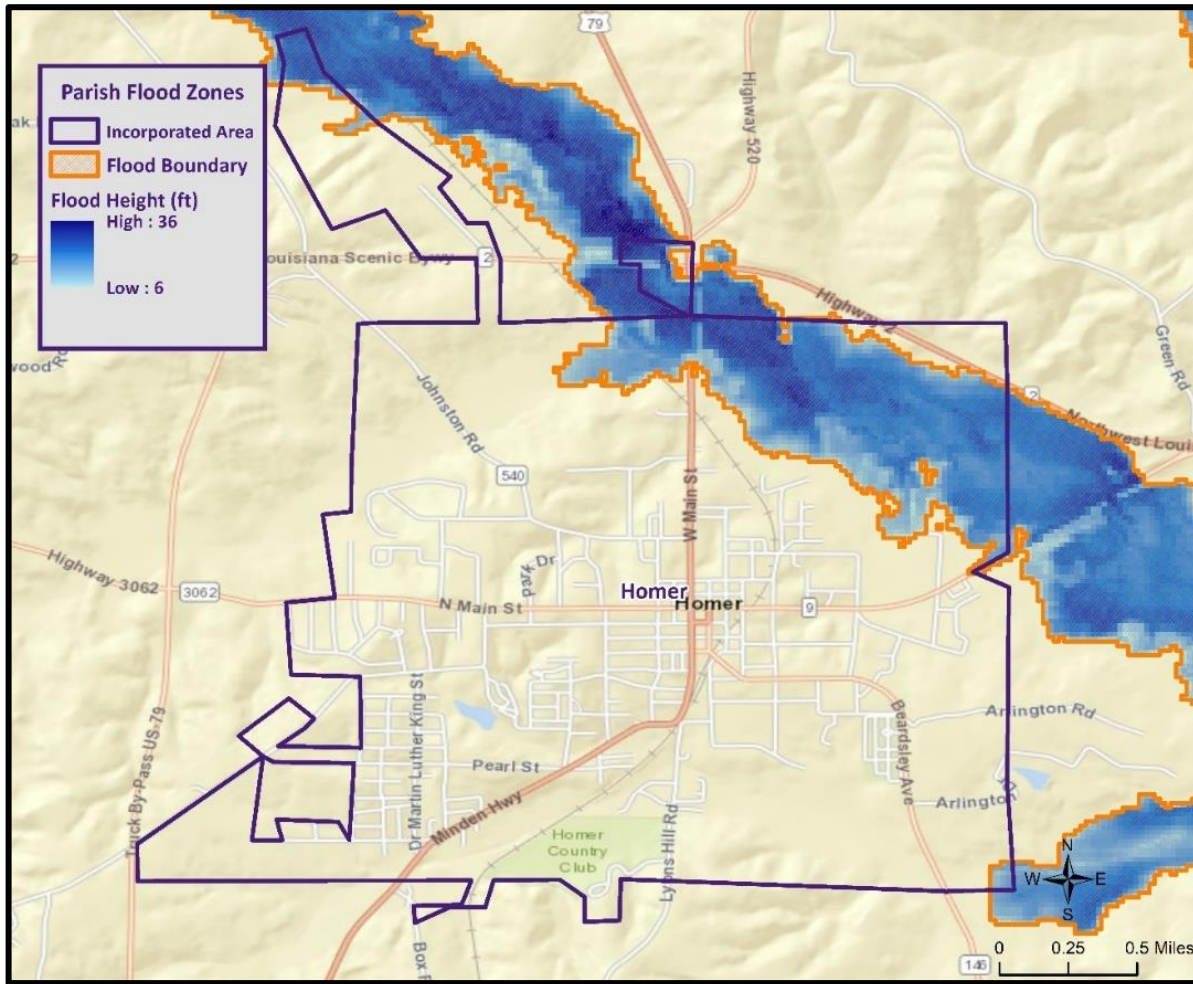
Digital Elevation Model



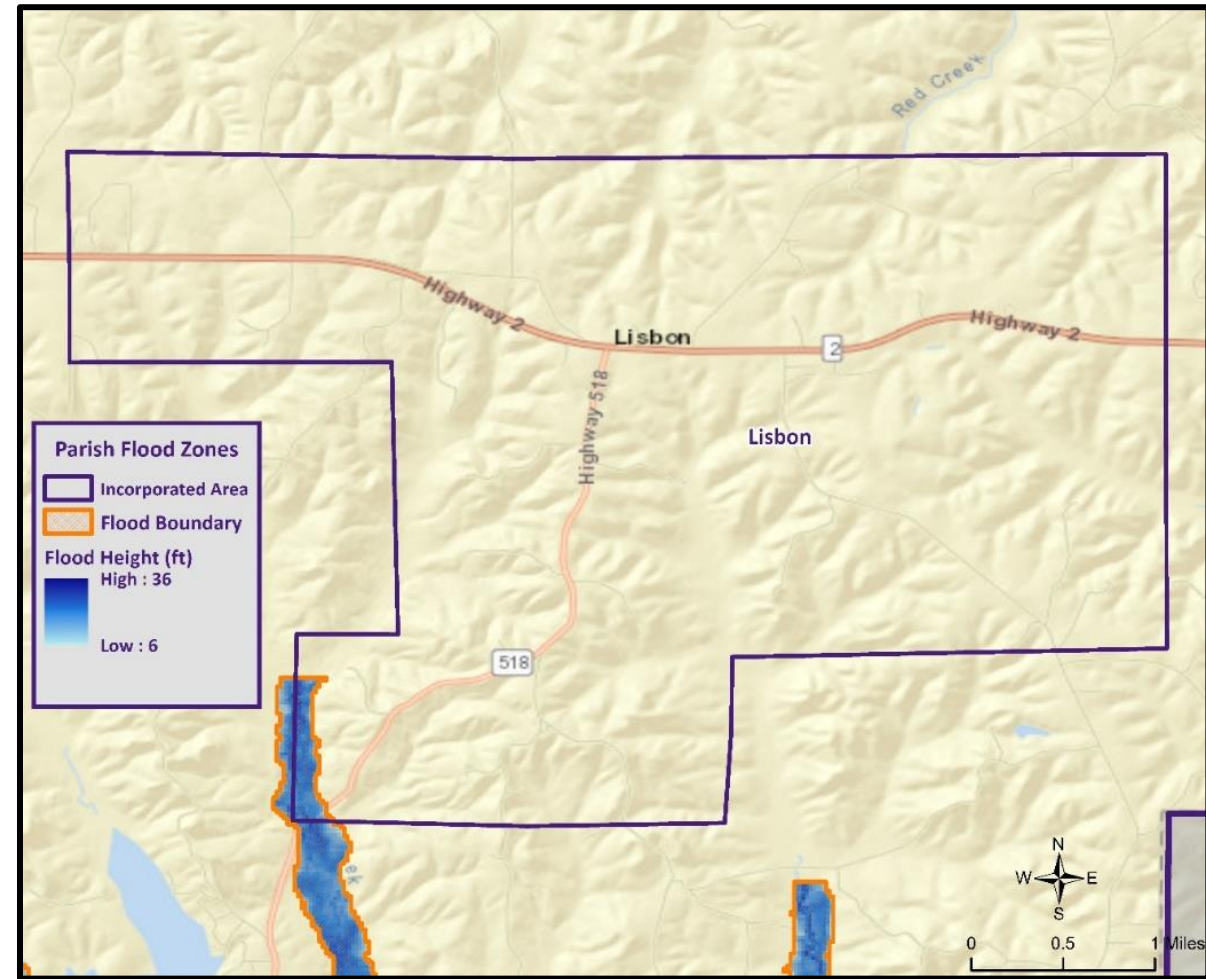
Claiborne Parish Flood Map



Municipal Flood Maps



Homer



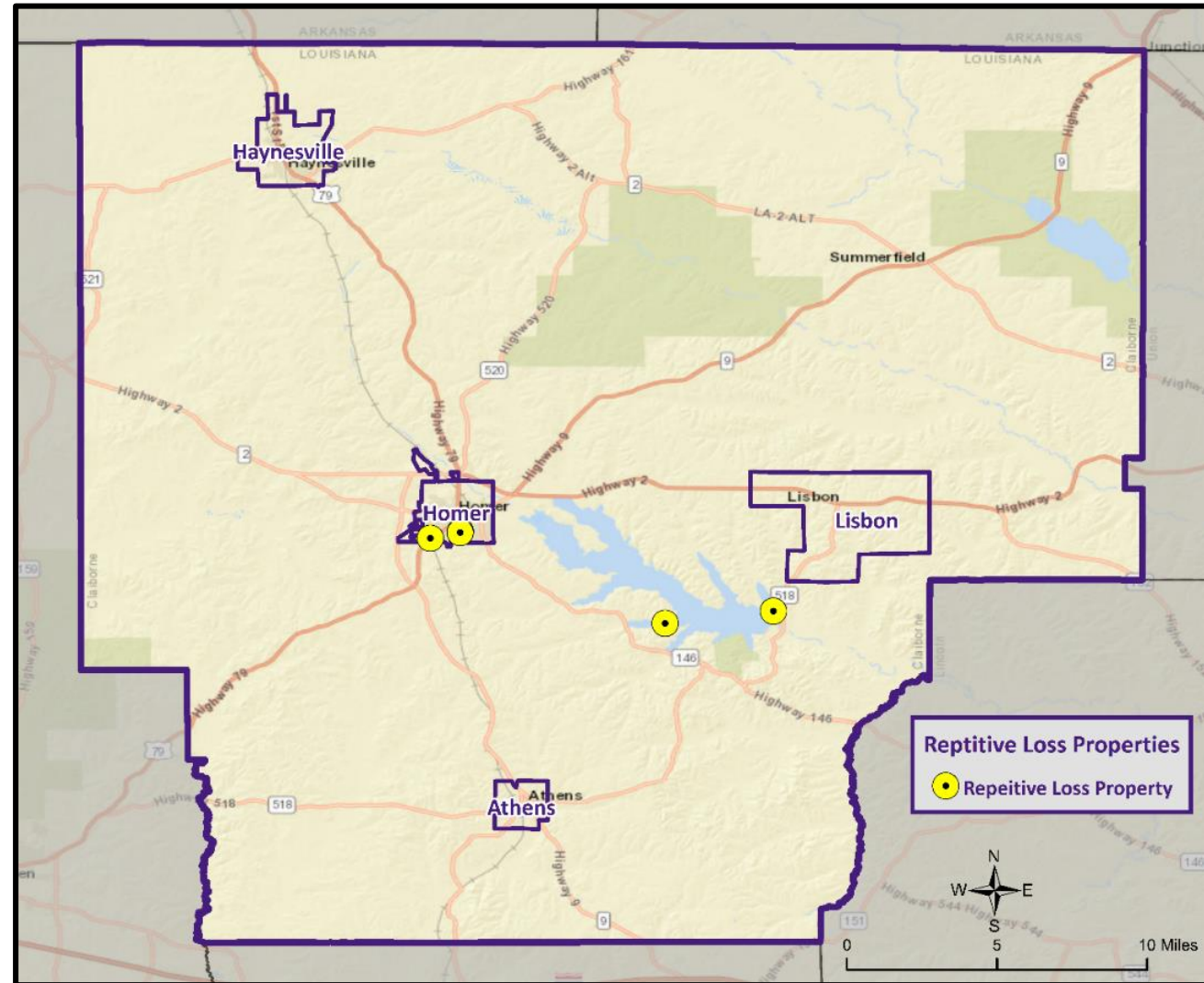
Lisbon

Flooding



- Some areas flood more often than other properties, even more than those in the mapped 100-year floodplain.
- FEMA defines a “repetitive loss” property as one which has received two flood insurance claim payments for at least \$1,000 over any 10-year period since 1978.
- There are currently around 160,000 repetitive loss properties in the U.S.
- These properties comprise 1% of the NFIP policy base, but they account for approximately 30% of the country’s flood insurance claim payments.

Repetitive Loss Properties

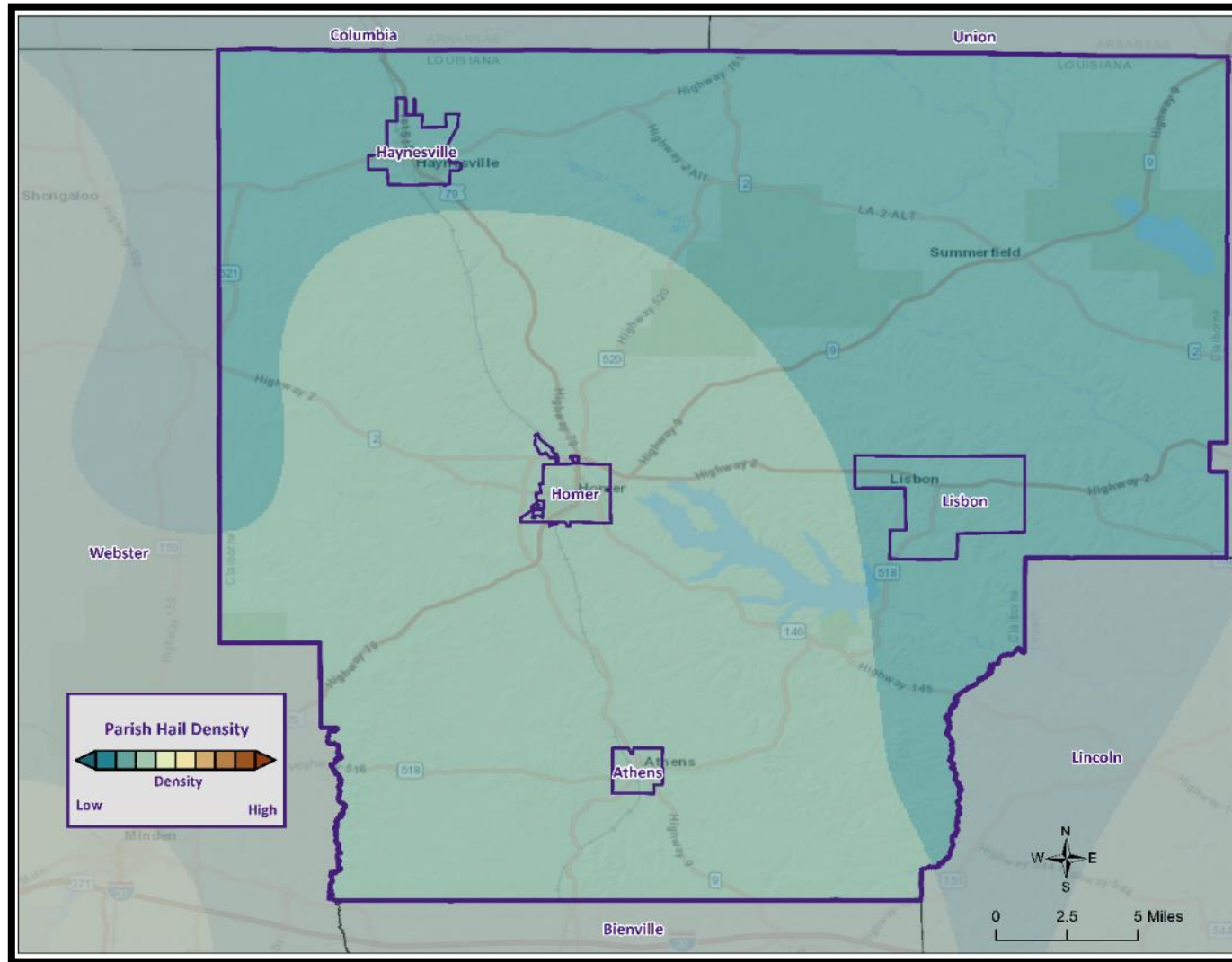


Thunderstorms

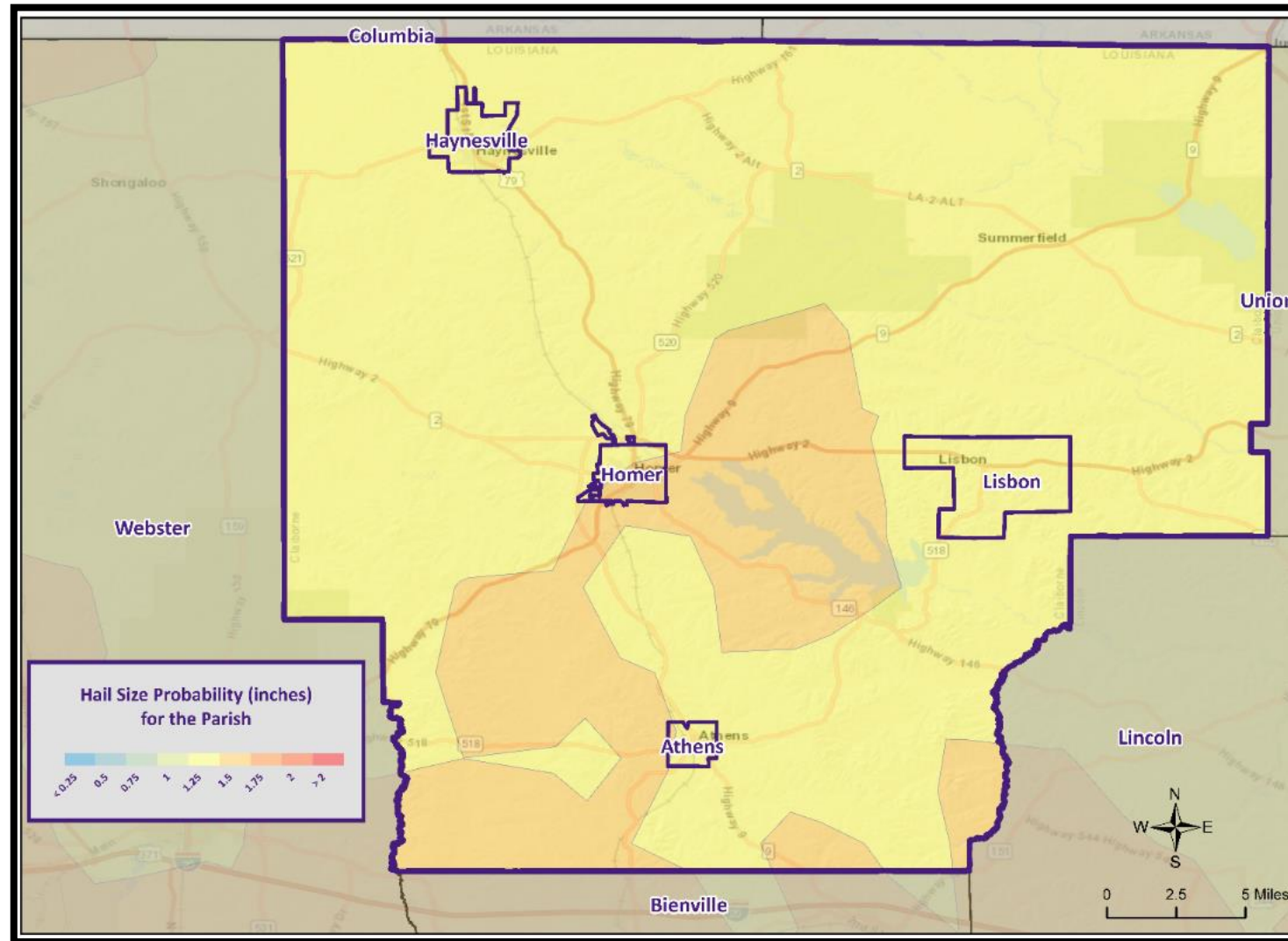


- A **thunderstorm**, also known as an **electrical storm**, a **lightning storm**, or a **thundershower**, is a type of storm characterized by the presence of lightning and its acoustic effect on the Earth's atmosphere known as thunder.
- They are usually accompanied by strong winds, heavy rain, and sometimes snow, sleet, or hail.
- Thunderstorms may line up in a series or rainband, known as a squall line. Strong or severe thunderstorms may rotate, known as supercells. While most thunderstorms move with the mean wind flow through the layer of the troposphere that they occupy, vertical wind shear causes a deviation in their course at a right angle to the wind shear direction.

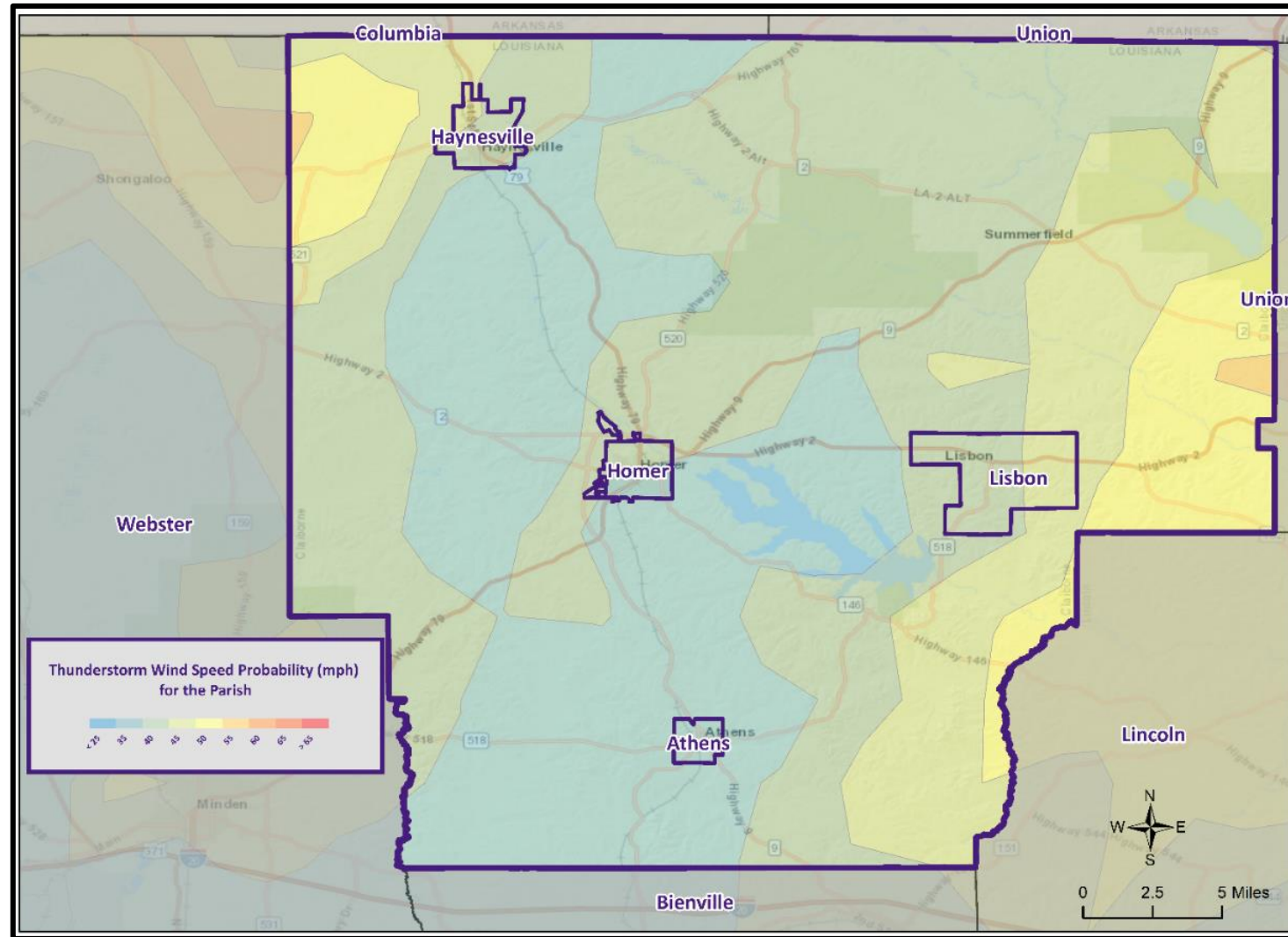
Hailstorm Density



Maximum Hail Size Probability



Maximum Wind Speed Probability

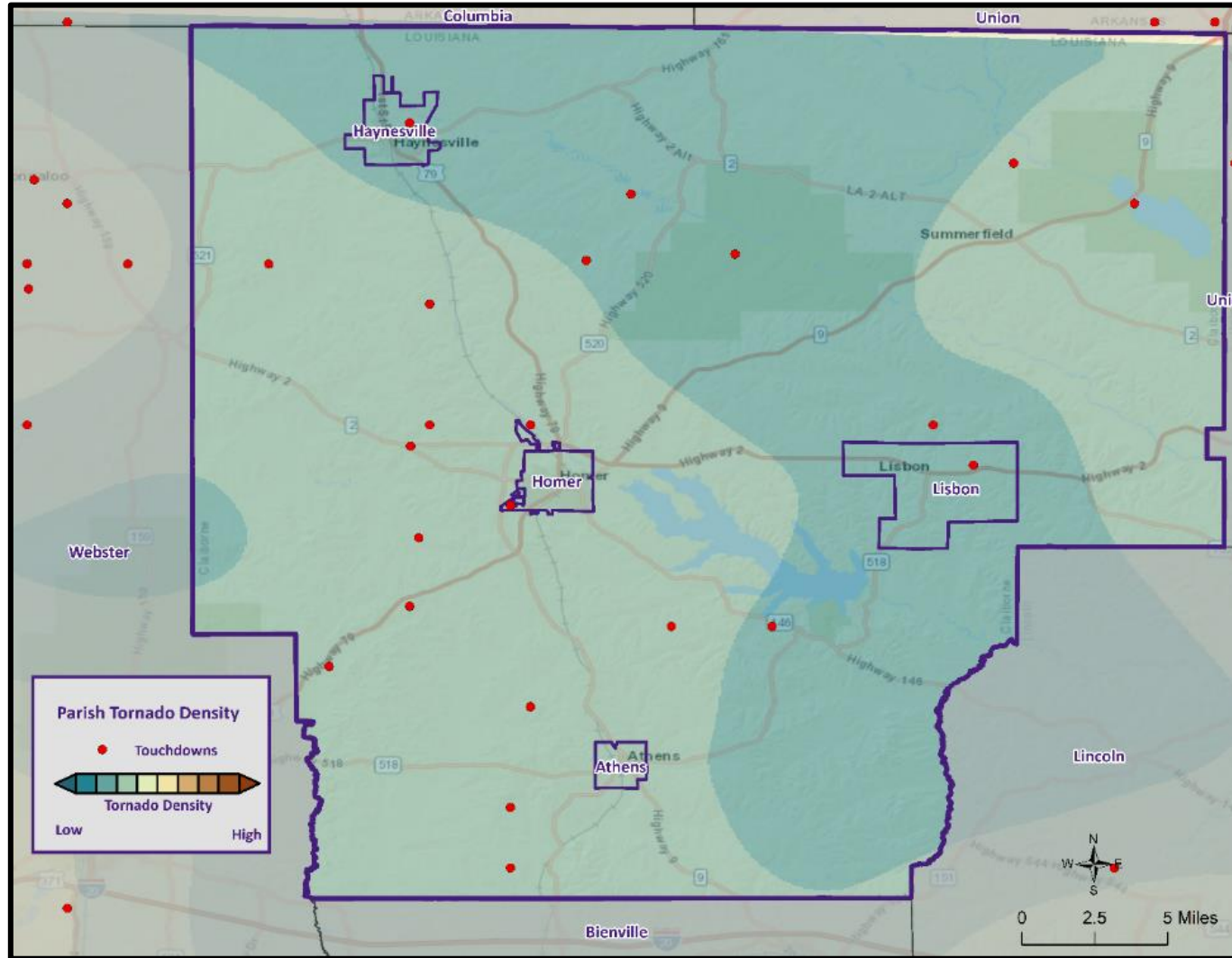


Tornadoes

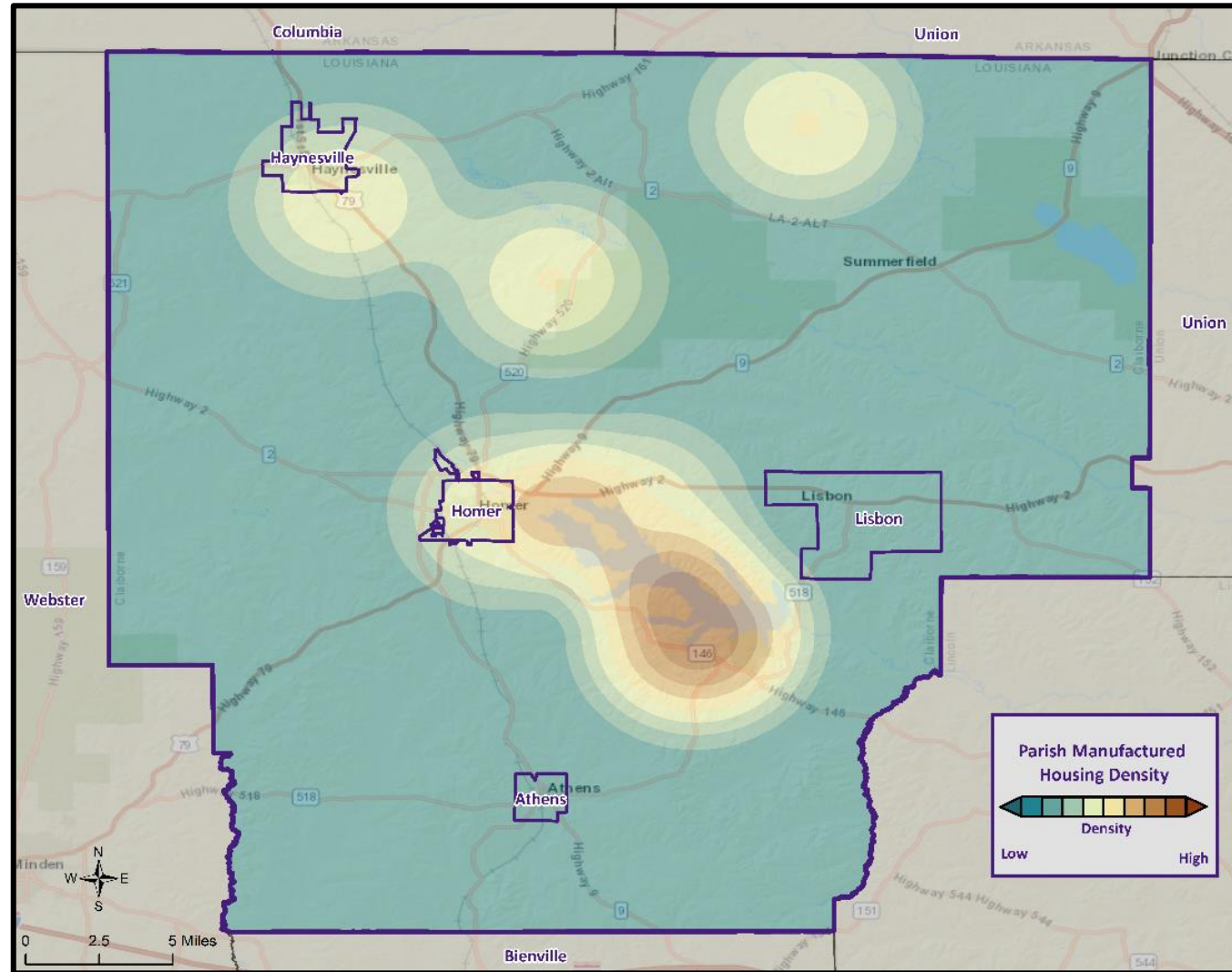
- Tornadoes are rapidly rotating funnels of wind extending between storm clouds and the ground.
- Tornadoes are the most severe storms for their size, and 70% of the world's reported tornadoes occur within the continental United States.

ORIGINAL FUJITA SCALE		ENHANCED FUJITA SCALE	
F5	261-318 mph	EF5	+200 mph
F4	207-260 mph	EF4	166-200 mph
F3	158-206 mph	EF3	136-165 mph
F2	113-157 mph	EF2	111-135 mph
F1	73-112 mph	EF1	86-110 mph
F0	<73 mph	EF0	65-85 mph

Tornadoes in Claiborne Parish



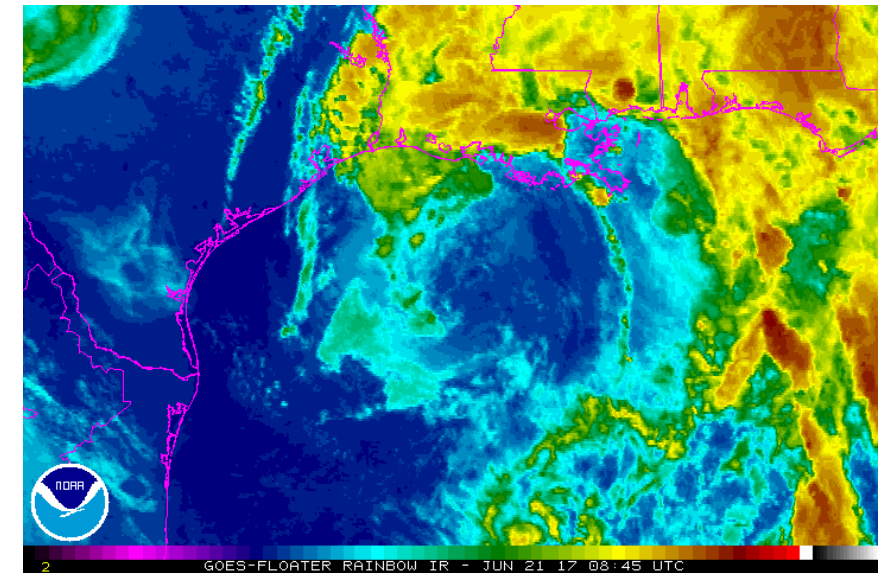
Manufactured Home Density



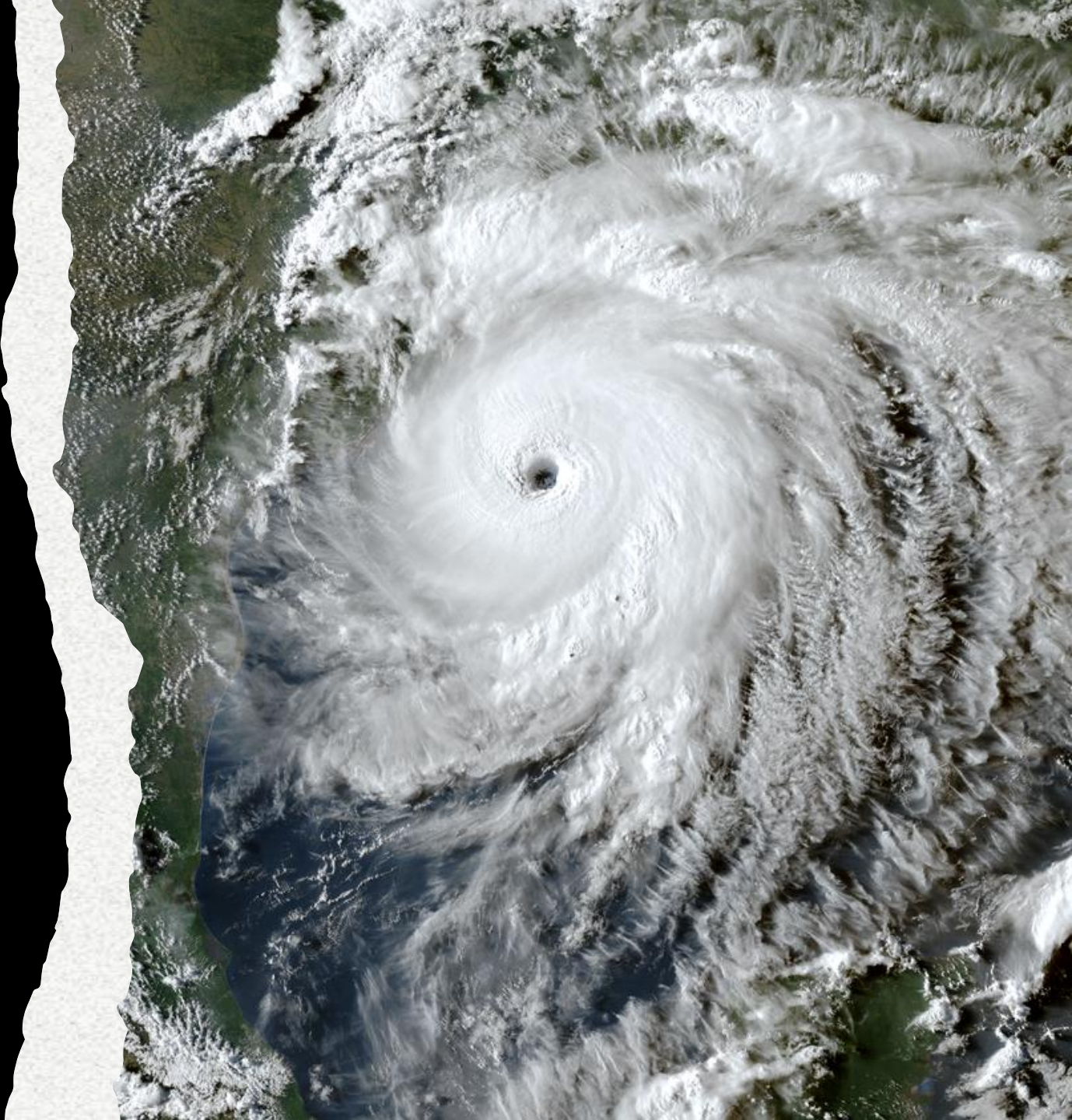
Tropical Cyclones

- Tropical cyclones are defined spinning, low-pressure air masses that draw surface air into their centers and attain strength ranging from weak tropical waves to the most intense hurricanes

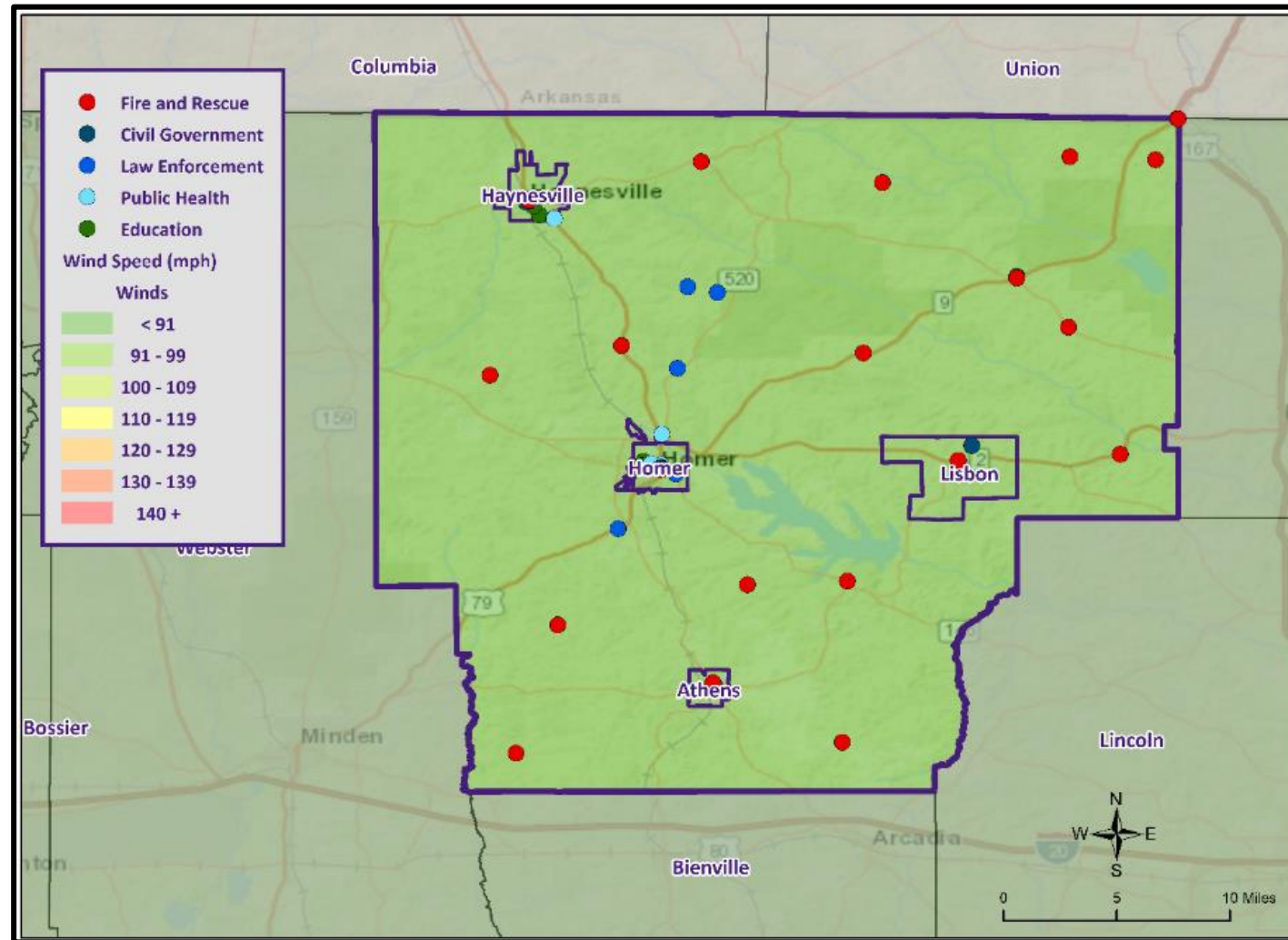
Saffir-Simpson Hurricane Wind Scale		
	Sustained Wind Speed	Effects
Category 1	74-95 mph (119-153 km/hr)	Very dangerous winds will produce some damage. Low-lying coastal roads flooded, minor pier damage
Category 2	96-110 mph (154-177 km/hr)	Extremely dangerous winds will cause extensive damage. Major damage to exposed mobile homes, evacuation of some shoreline residents
Category 3	111-130 mph (178-209 km/hr)	Devastating damage will occur. Some structural damage to small buildings; serious flooding at coast and many smaller structures near coast destroyed
Category 4	131-155 mph (210-249 km/hr)	Catastrophic damage will occur. High risk of injury or death to people, livestock, and pets due to flying and falling debris. Long-term water shortages will increase human suffering. Most of the area will be uninhabitable for weeks or months.
Category 5	> 155 mph (249 km/hr)	Catastrophic damage will occur. People, livestock, and pets are at very high risk of injury or death from flying or falling debris. A high percentage of frame homes will be destroyed. Long-term power outages and water shortages will render area uninhabitable for weeks or months.



Hurricane Laura (2020)



Wind Speed Impacts on C.I.

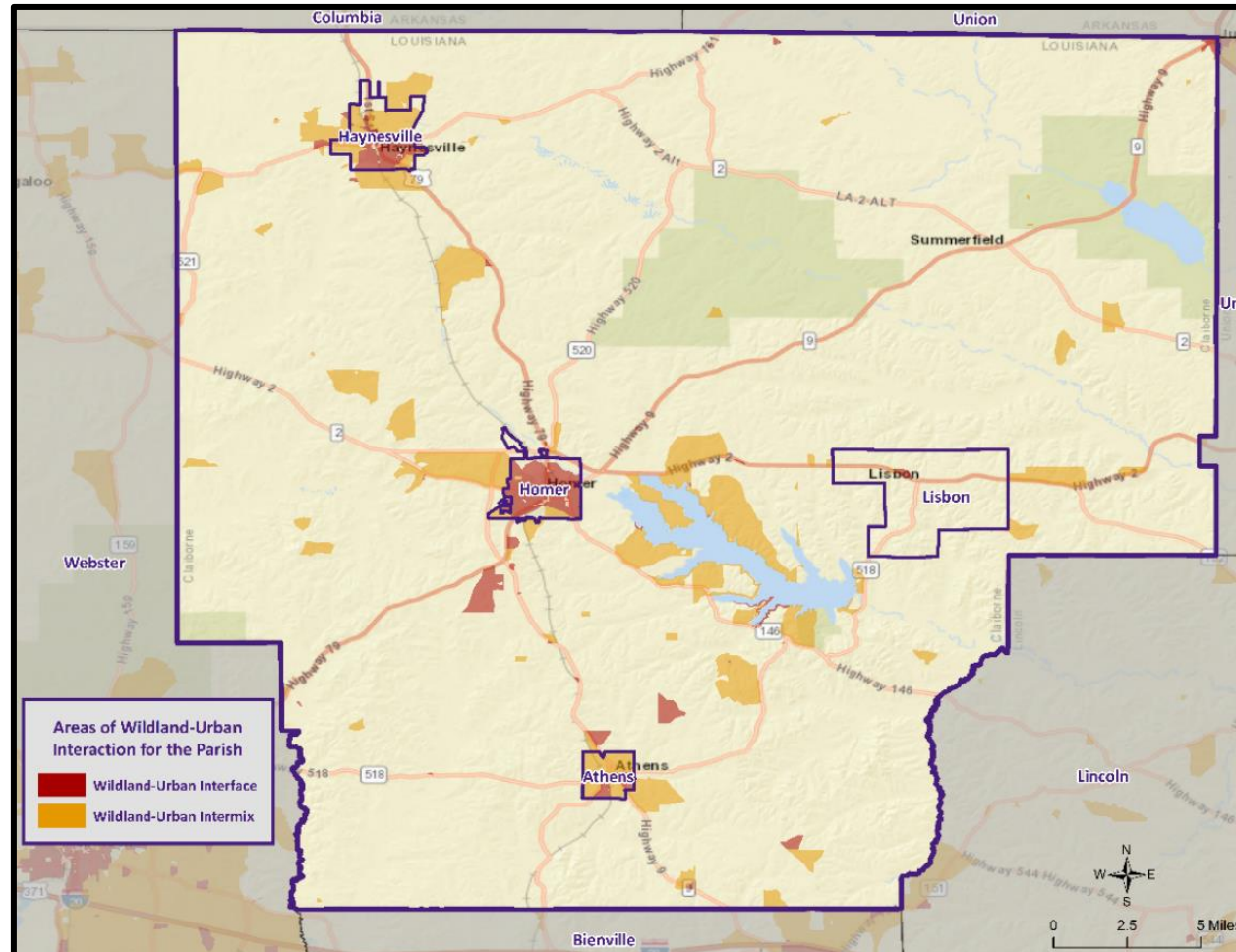


Wildfires

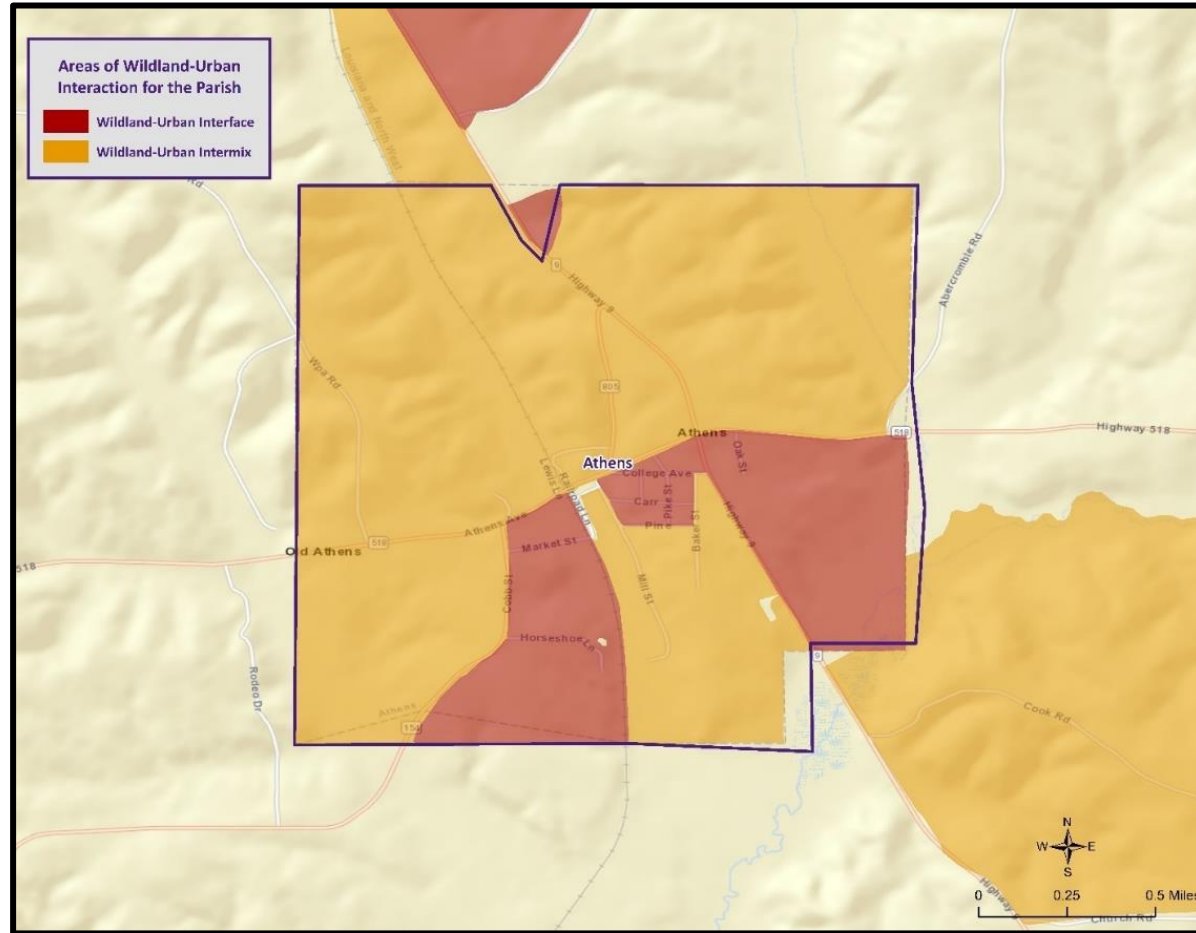


- A wildfire is combustion in a natural setting, marked by flames or intense heat.
- Most frequently, wildfires are ignited by lightning or unintentionally by humans. Fires set purposefully (but lawfully) are referred to as controlled fires or burns
- While loss of timber is a problem, the real hazard is when wildfires threaten developed areas. As more development moves into and next to forested areas, the hazards to people and property increases.

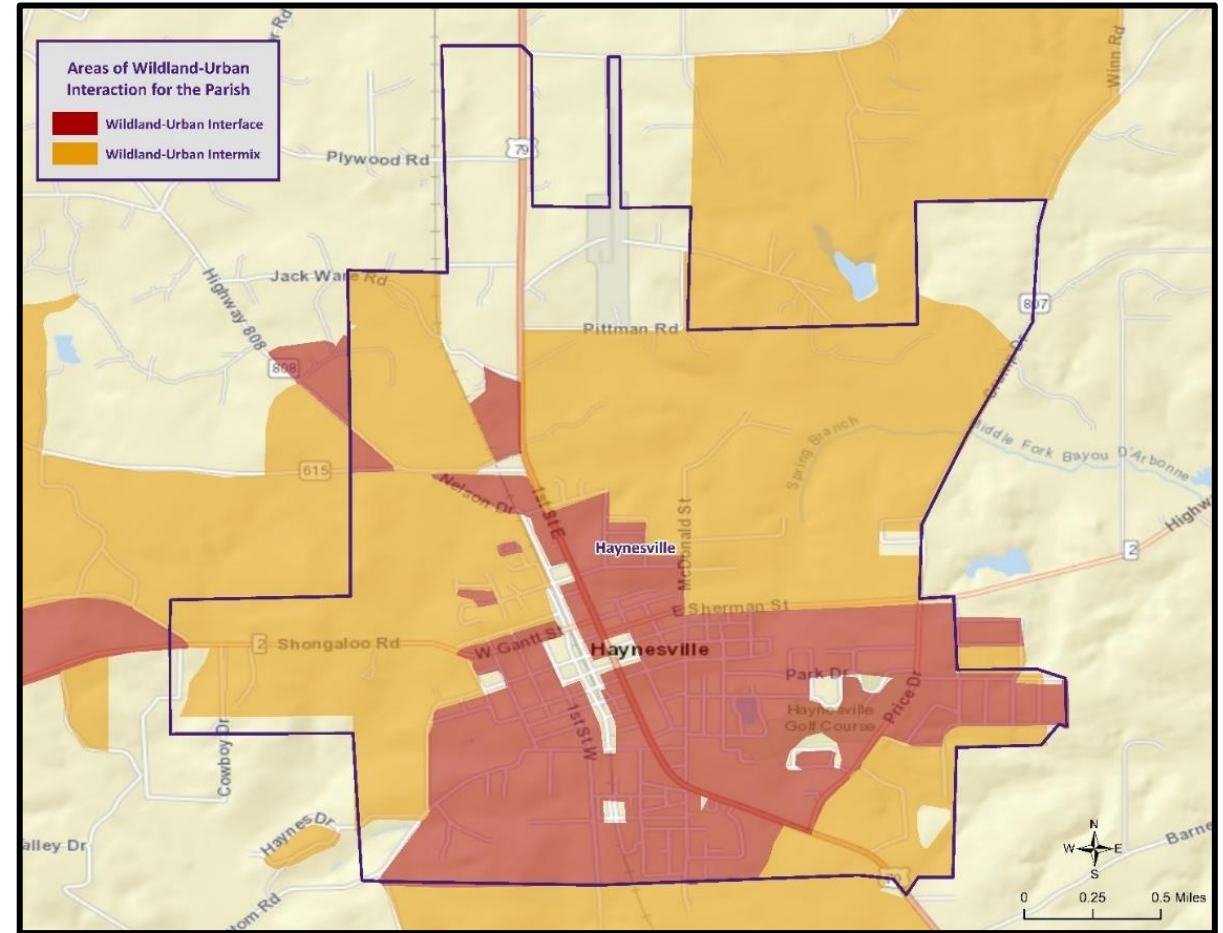
Wildland-Urban Interaction in Claiborne Parish



Municipal WUI Maps

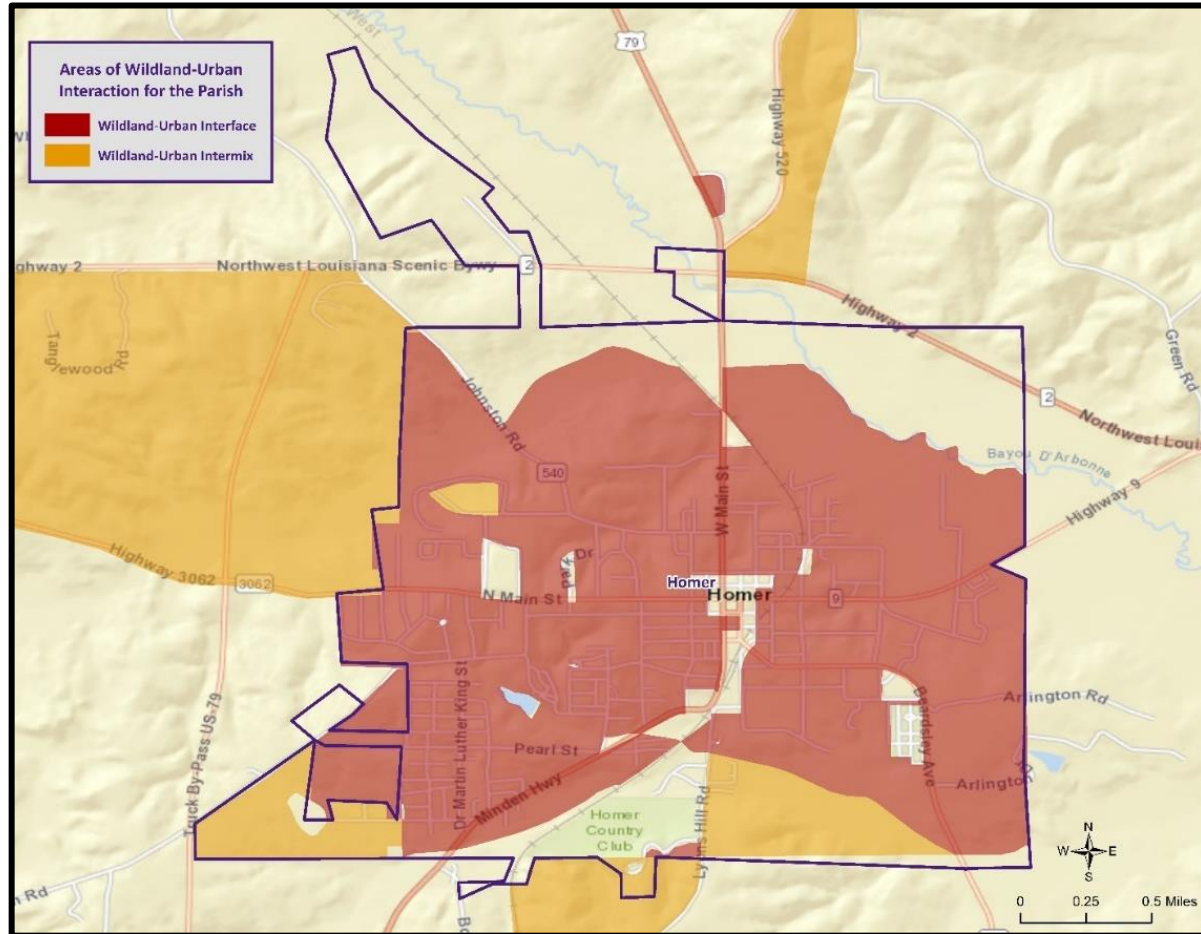


Athens

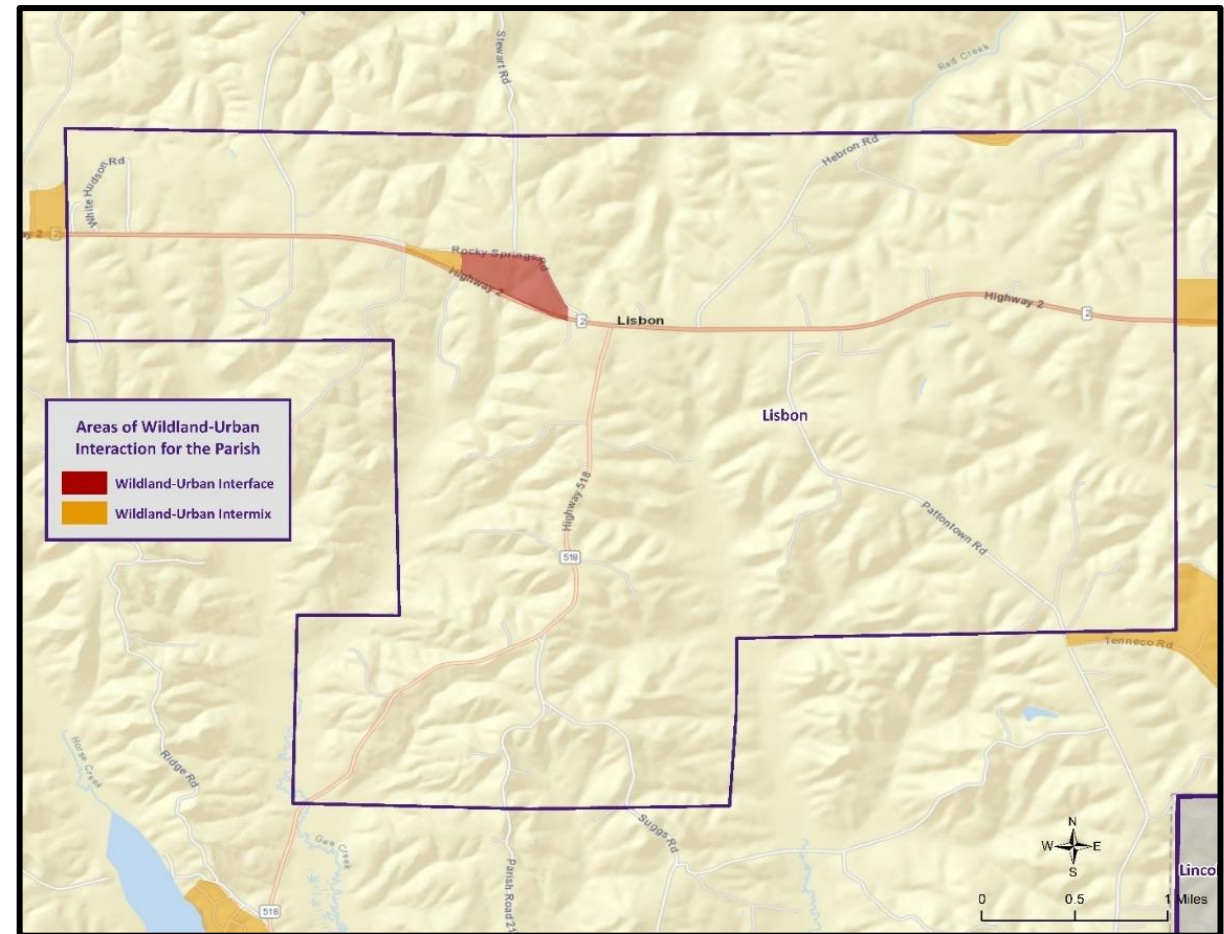


Haynesville

Municipal WUI Maps



Homer



Lisbon

Winter Weather

- Occurs when humid air from the Gulf of Mexico meets a cold air mass from the north.
- As the temperature falls, precipitation may fall in the form of snow or sleet.
- If the ground temperature is cold enough but air temperature is above freezing, rain can freeze instantly on contact with the surface, causing massive ice storms.



Claiborne Parish Mitigation Goals

1. Mitigate both critical and non-critical structures and infrastructure around Claiborne Parish to reduce the impact of hazards
2. Pursue opportunities to educate the public on the hazards that can impact Claiborne Parish
3. Maintain a continuity of government before, during, and after a disaster



Parish Hazard Mitigation Project Update

Claiborne OHSEP/
Claiborne Parish Police Jury Discussion

Public Outreach Activity #1

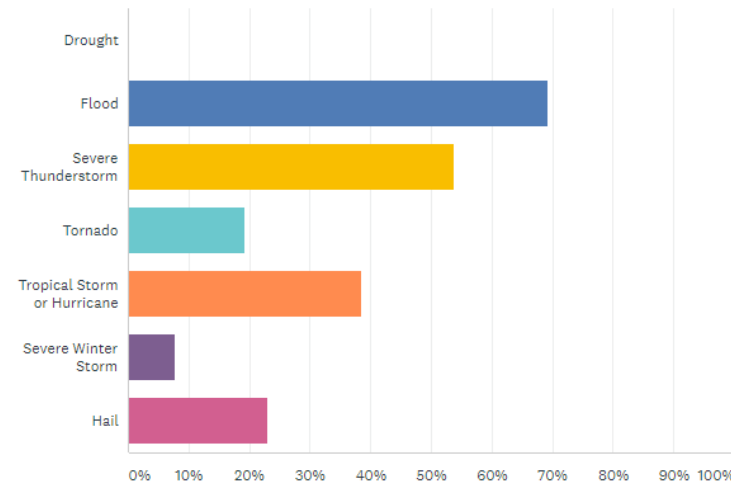
Hazard Mitigation Public Opinion Survey

https://lsu.qualtrics.com/jfe/form/SV_1KWp3mlqGq0JaKO



Which of these natural disasters have you or someone in your household experienced in the past five years? (Check all that apply)

Answered: 26 Skipped: 1



Public Outreach Activity #2

Please fill out an incident questionnaire!



CLAIBORNE PARISH PUBLIC MEETING	
PUBLIC ACTIVITY: INCIDENT/ ISSUE QUESTIONNAIRE	4. INTENSITY:
1. HAZARD TYPE(S):	A. DEPTH (FLOODING) OR SIZE (HAIL ETC.):
A. DAM FAILURE	B. WIND STRENGTH
B. DROUGHT	5. RECURRING OR ONE TIME:
C. EXCESSIVE HEAT	A. IF RECURRING, HOW OFTEN:
D. FLOODING	6. WHAT TYPE OF INTERRUPTIONS DOES/DID THE INCIDENT OR ISSUE CAUSE? (BUSINESS CLOSURE, DAMAGE, EVACUATION, ETC.)
E. THUNDERSTORMS	
F. TORNADOES	7. HOW LONG WAS THE INTERRUPTION (HOURS, DAYS, WEEKS ETC.)
G. TROPICAL CYCLONES	
H. WILDFIRES	8. HOW COULD THIS HAZARD OR IMPACT BE PREVENTED, FIXED OR ALLEVIATED?
I. WINTER WEATHER	
2. DESCRIBE INCIDENT OR ISSUE:	
3. LOCATION:	
A. CITY:	
B. ADDRESS OR AREA:	



SDMI Hazard Mitigation Website

The screenshot shows the SDMI Hazard Mitigation Website interface. At the top, the LSU logo and 'Stephenson Disaster Management Institute' are on the left, and 'SDMI HOME' with social media icons are on the right. Below this is a yellow 'HAZARD MITIGATION' header with a navigation bar containing 'Intro', 'Events', 'FEMA Resources', 'Parish Plans' (highlighted), and 'Settings'.

The main content area is titled 'Claiborne Parish' and includes a 'PLAN DUE DATE: APRIL 16 2024' badge. A 'DEVELOPMENT STATUS' section features a progress bar with four stages: 'PLAN DEVELOPMENT' (yellow), 'PLAN REVIEW' (purple), 'PLAN ADOPTION' (purple), and 'COMPLETED' (purple). Below the progress bar, the stages are labeled: 'INITIAL PLANNING COMMITTEE', 'TBD', 'TBD', and 'TBD'.

A 'PARTICIPATING JURISDICTIONS' section lists: Claiborne Parish, unincorporated areas; Village of Athens; Village of Lisbon; Town of Hayensville; and Town of Homer.

Two upcoming events are listed:

- OCT 26** 2023 CLAIBORNE PARISH KICKOFF MEETING
Phone Call
10:00 AM - 10:30 AM 10/26/2023
- DEC 6** 2023 CLAIBORNE PARISH INITIAL PLANNING COMMITTEE MEETING
Homer, LA
01:00 PM - 02:00 PM 12/6/2023

A 'PREVIOUS PLANS' section for the year 2016 shows three download links for: 'CLAIBORNE HM PLAN', 'CLAIBORNE PARISH KICK OFF MEETING', and 'CLAIBORNE PARISH PUBLIC MEETING'.

A 'Survey' section at the bottom has an 'Access Survey' button.

The footer features the LSU logo.

- Repository for materials used during update process
- <https://hmplans.sdmi.lsu.edu/Home/Parish/claiborne>

Contact Us

Brant Mitchell, Director, CEM

bmitch9@lsu.edu

(225) 578-5939

Chris Rippetoe, HM Program Manager, CFM

crippe2@lsu.edu

(225) 578-6667

Jason Martin, Emergency Management Analyst

jmar293@lsu.edu

(225) 578-6264

