



Iberville Parish Hazard Mitigation Plan Update Public Meeting

April 13, 2016

Plaquemine, LA

Agenda

- Hazard Mitigation Planning Process – SDMI Staff
- Risk Assessment – SDMI Staff
- Update on Previous/Current Mitigation Projects – Iberville Parish OHSEP
- Public Outreach Activities – SDMI & Iberville Parish OHSEP

Hazard Mitigation

- Protect public safety and prevent loss of life and injury;
- Help accomplish community objectives, such as leveraging capital improvements, infrastructure protection, open space preservation, and economic resiliency;
- Prevent damage to a community's economic, cultural and environmental assets;
- Minimize operational downtime and accelerate recovery of government and the private sector after an event

Why are we required to have a Hazard Mitigation Plan?

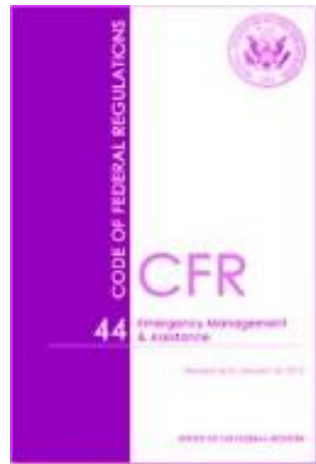
- Disaster Mitigation Act of 2000 (DMA 2000)

Section 322 of the Act specifically addresses mitigation planning and requires state and local governments to prepare multi-hazard migration plans as a precondition for receiving FEMA mitigation project grants.

- Meet federal requirements of Title 44 Code of Regulations (CFR) §201.6 for approval and eligibility to apply for FEMA Hazard Mitigation Assistance grant programs.



- The approved Iberville Parish Hazard Mitigation Plan will allow for distribution of HM funding following future disasters.



Collaborative Planning Approach



Planning Development

New Plan Layout

- Section 1: Introduction
 - Updated demographics
 - Economics
 - Update parish/jurisdiction descriptions
- Section 2: Hazard Identification and Parish-wide Risk Assessment
- Section 3: Capability Assessment
- Section 4: Mitigation Strategies
 - New actions
 - Action updates
 - Survey results

New Plan Layout

- Appendix A: Planning Process
- Appendix B: Plan Maintenance
- Appendix C: Parish Essential Facilities
- Appendix D: Plan Adoption
- Appendix E: State Required Worksheets

Hazard Identification and Risk Assessment

- Based on Currently Profiled Risks
- Any Newly Identified Risks
- Prevalent Hazards
- Previous Occurrences
- Probability of Future Events
- Assets Inventory
- Essential Facilities
- Hazard Impact
- Future Development
- Future Hazard Impacts
- Zoning and Land Use
- Hazard Profiles

Hazard Identification and Risk Assessment

- Coastal Land Loss/Subsidence*Discounted
- Flooding
- Sinkholes
- Thunderstorms
 - Lightning
 - High Winds
 - Hailstorms
- Tornadoes
- Tropical Cyclones
- Winter Storm

These natural hazards were selected based on an assessment of the overall impact (geographic extent, magnitude, probability, and exacerbating or mitigating conditions) affecting Iberville Parish.

Risk Assessment: Hazard Identification

- The plan includes descriptions of the natural hazards that affect the jurisdictions in the planning area.
- A hazards identification should include the
 - locations affected
 - the extent or strength
 - previous occurrences
 - probability of future events

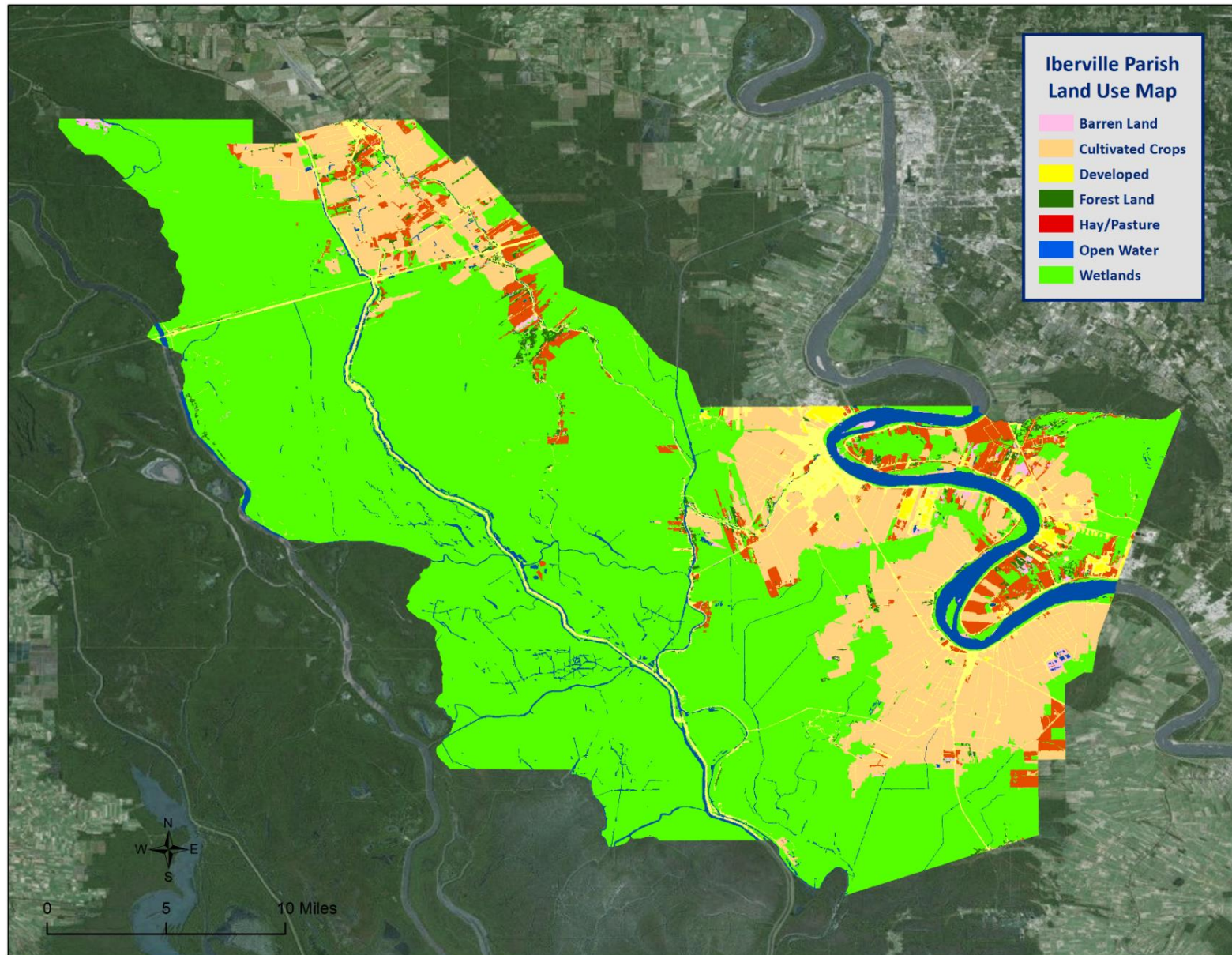
Risk Assessment: Analyze Risk and Summarize Vulnerability

- Risk analysis involves evaluating vulnerable assets, describing potential impacts, and estimating losses for each hazard.
- This helps the community understand the greatest risks facing the area.
- Methods can include exposure risk analysis, historical analysis and scenario analysis.
- Through the risk analysis the community should be able to verbalize or create problem statements about the identified risks.

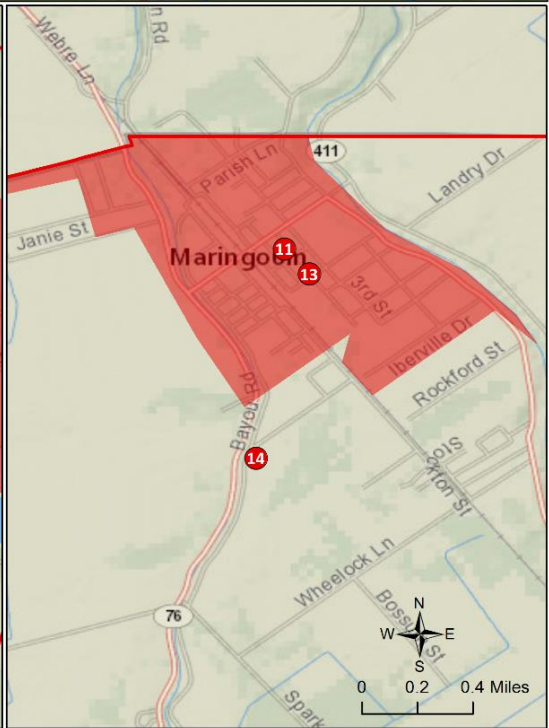
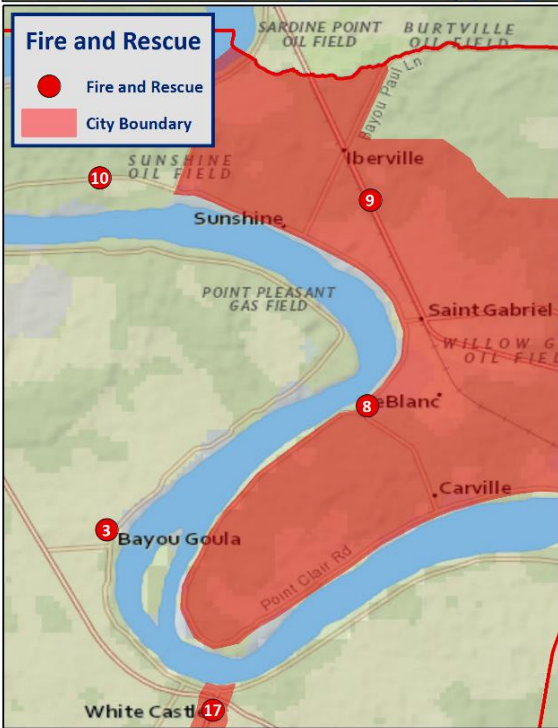
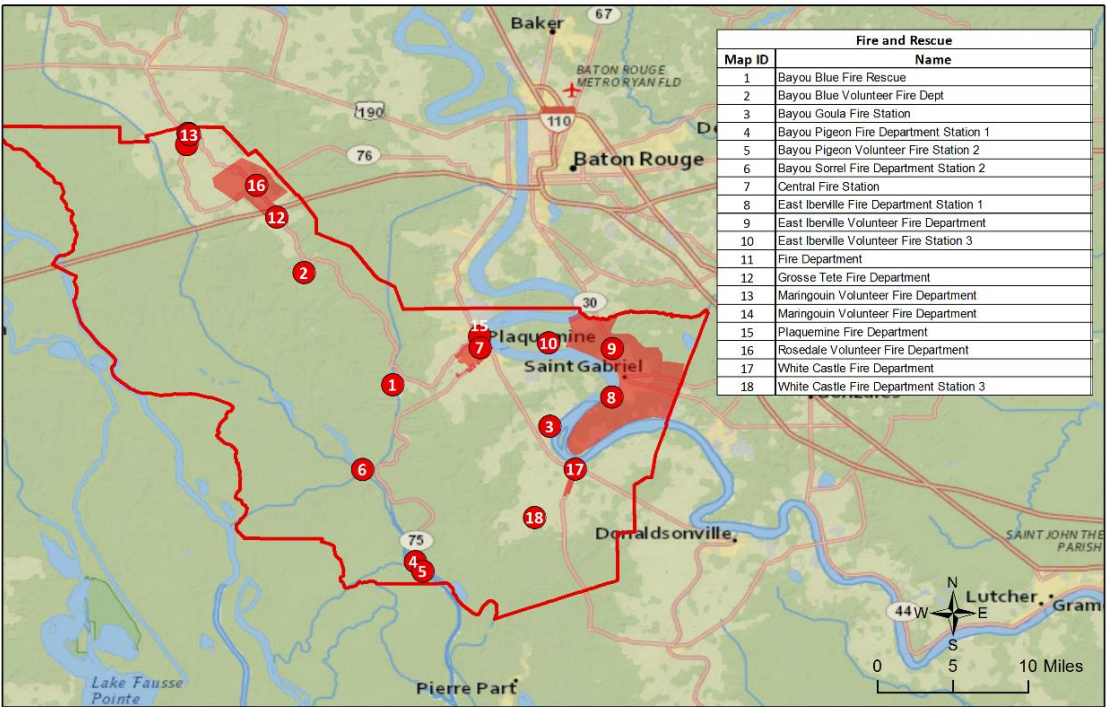
Risk Assessment: Maps



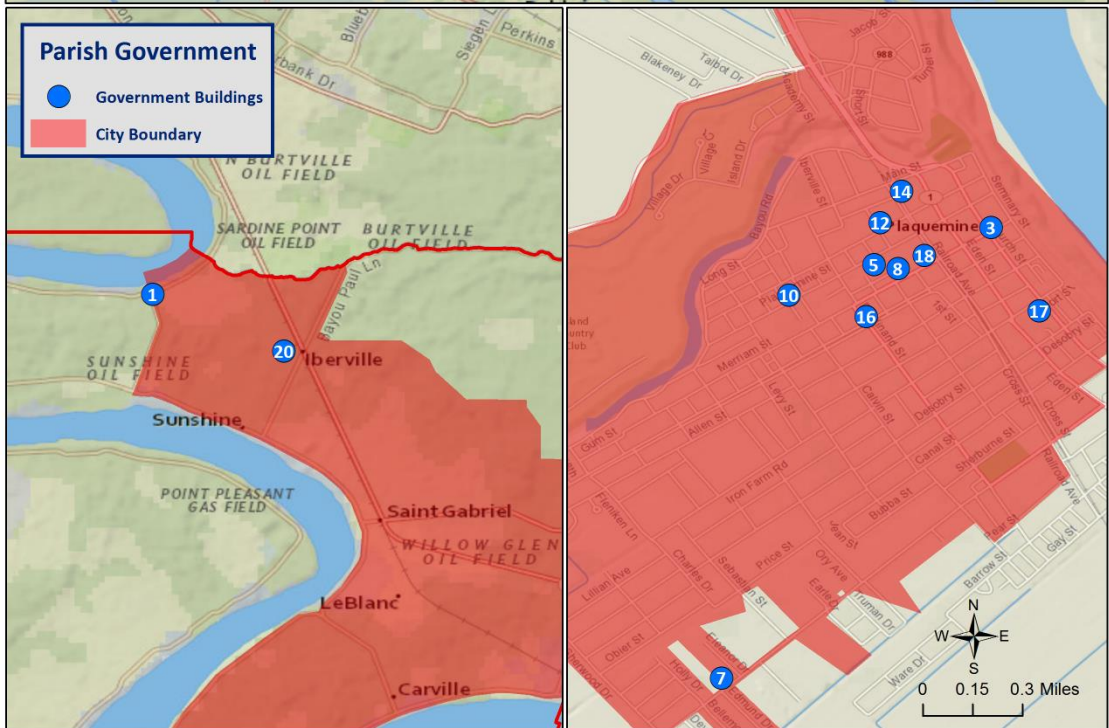
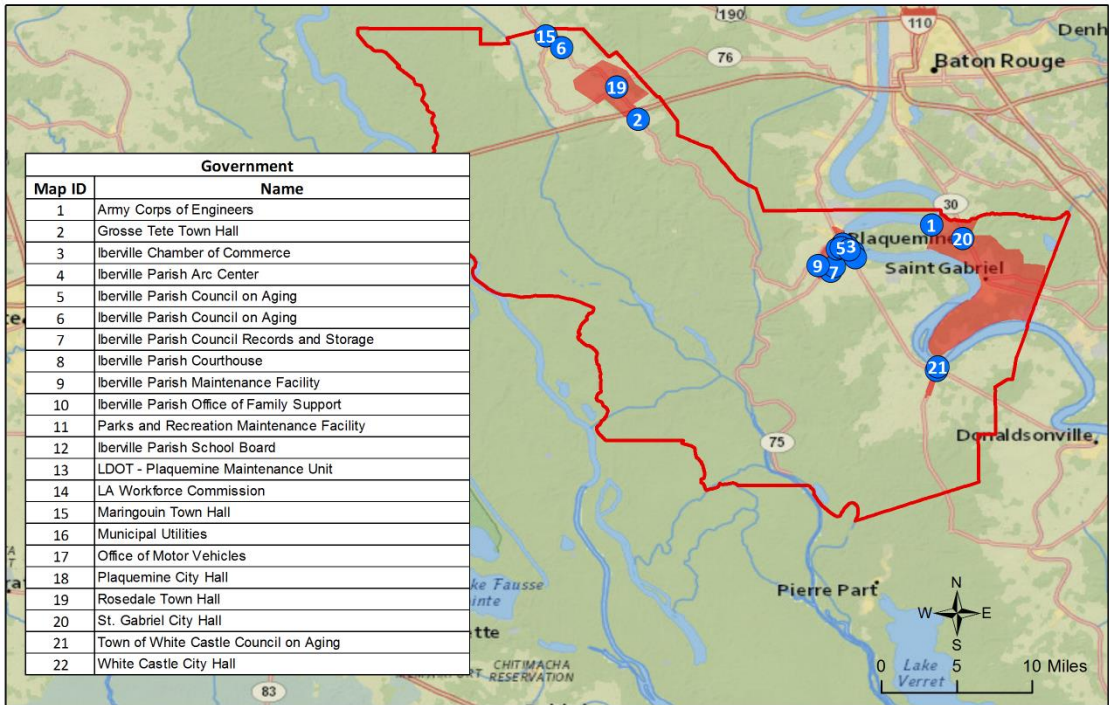
Land Use in Iberville Parish



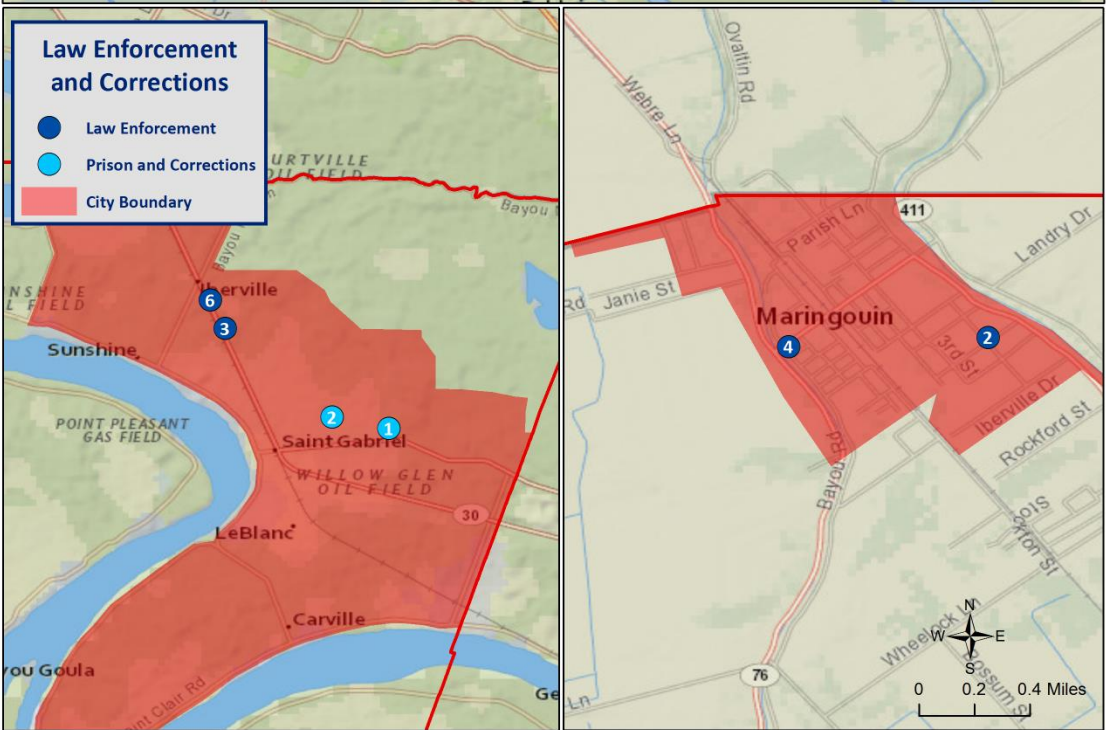
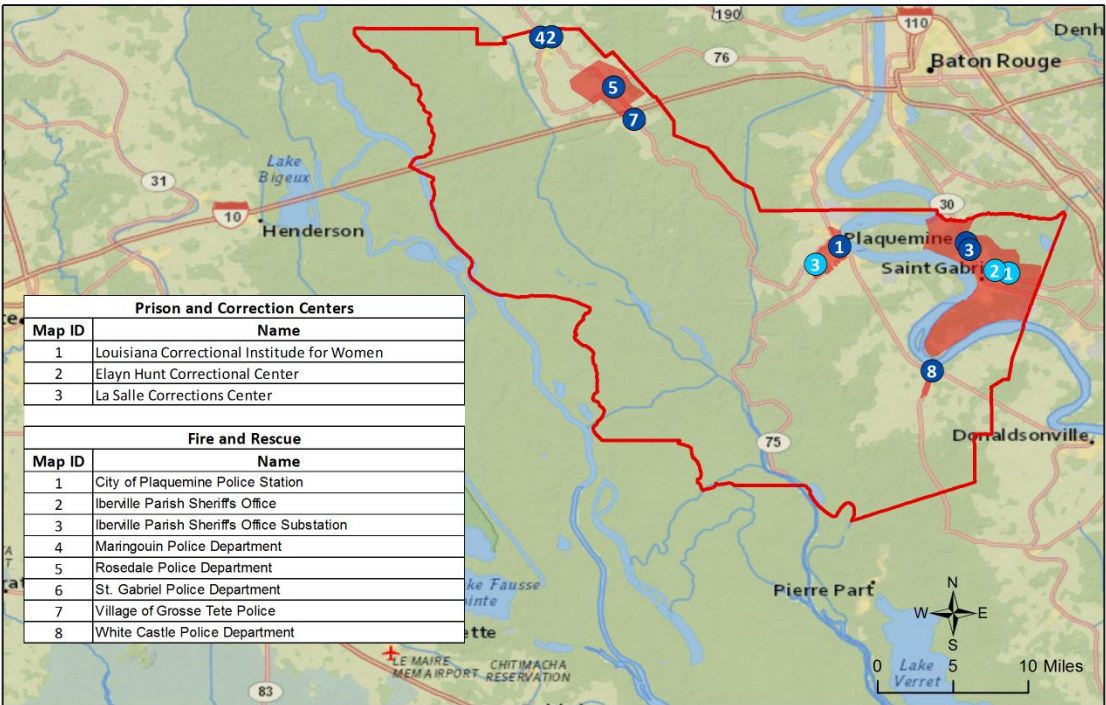
Critical Facilities – Fire Stations



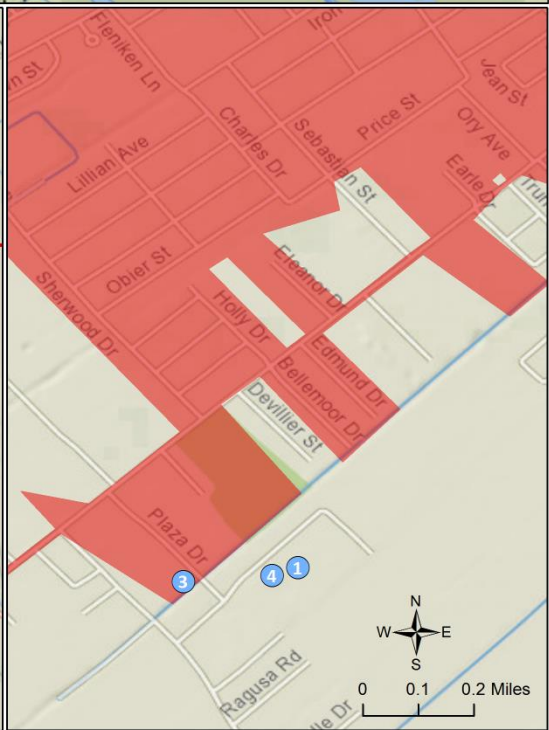
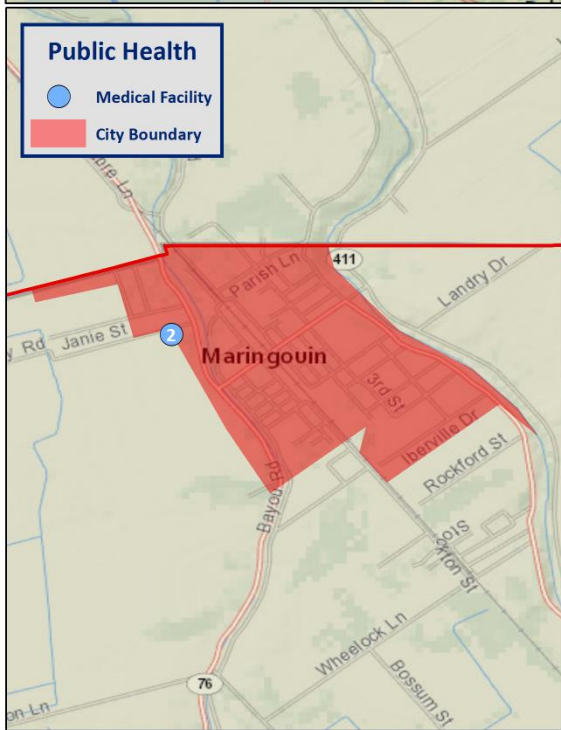
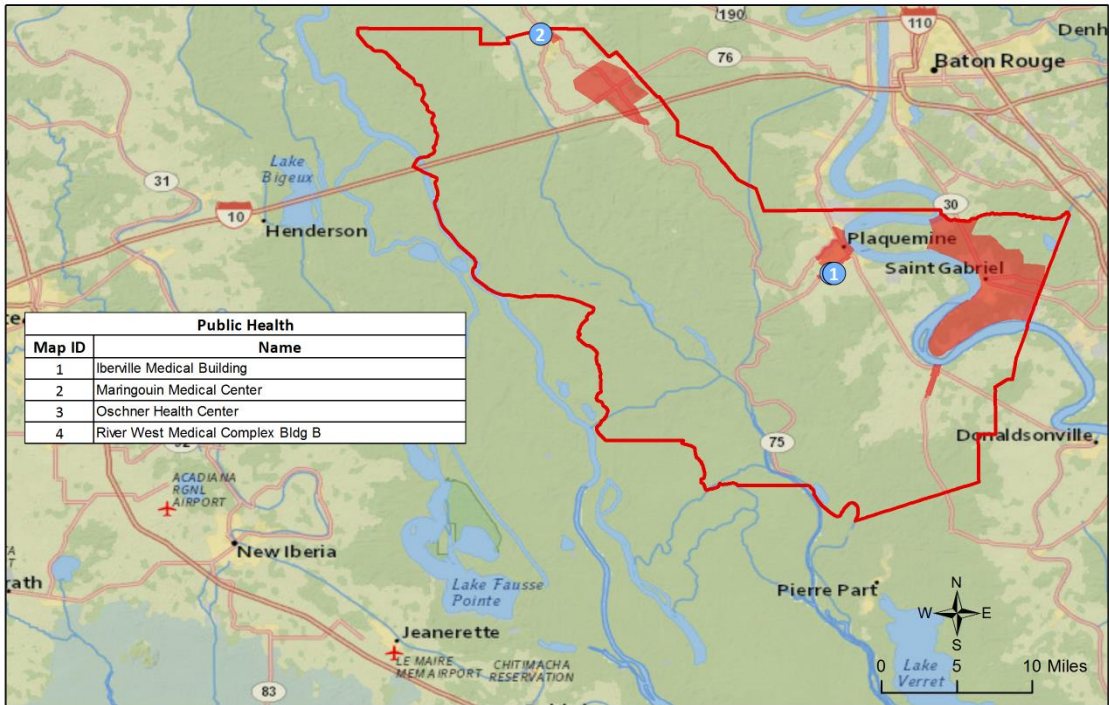
Critical Facilities – Government Buildings



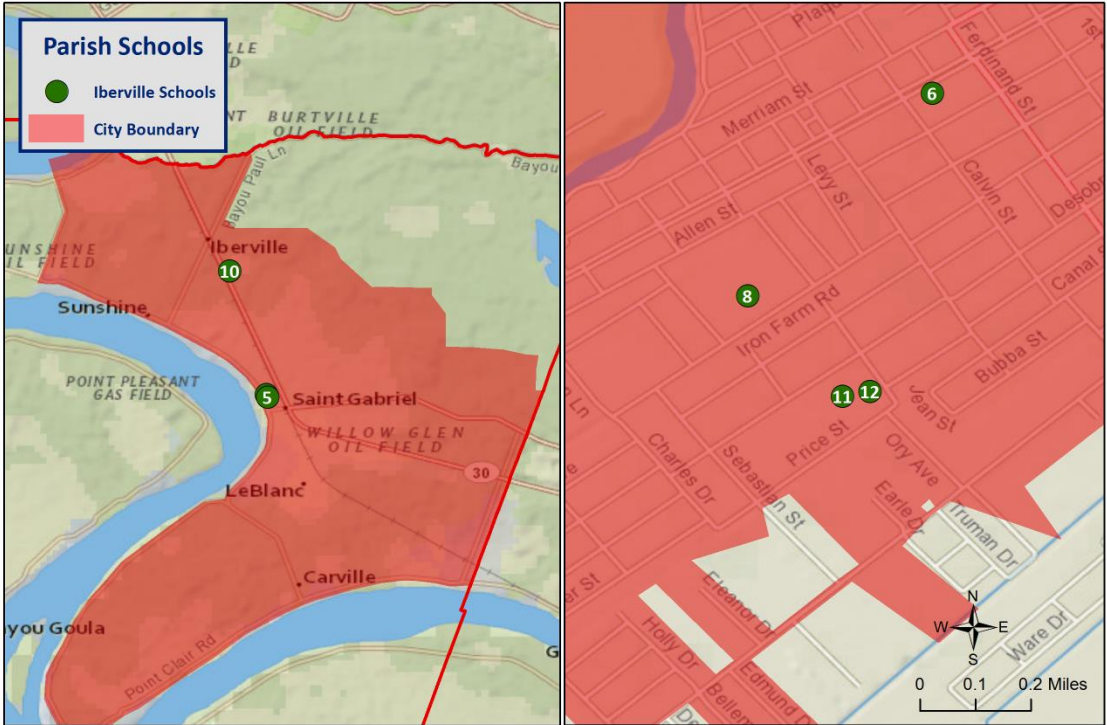
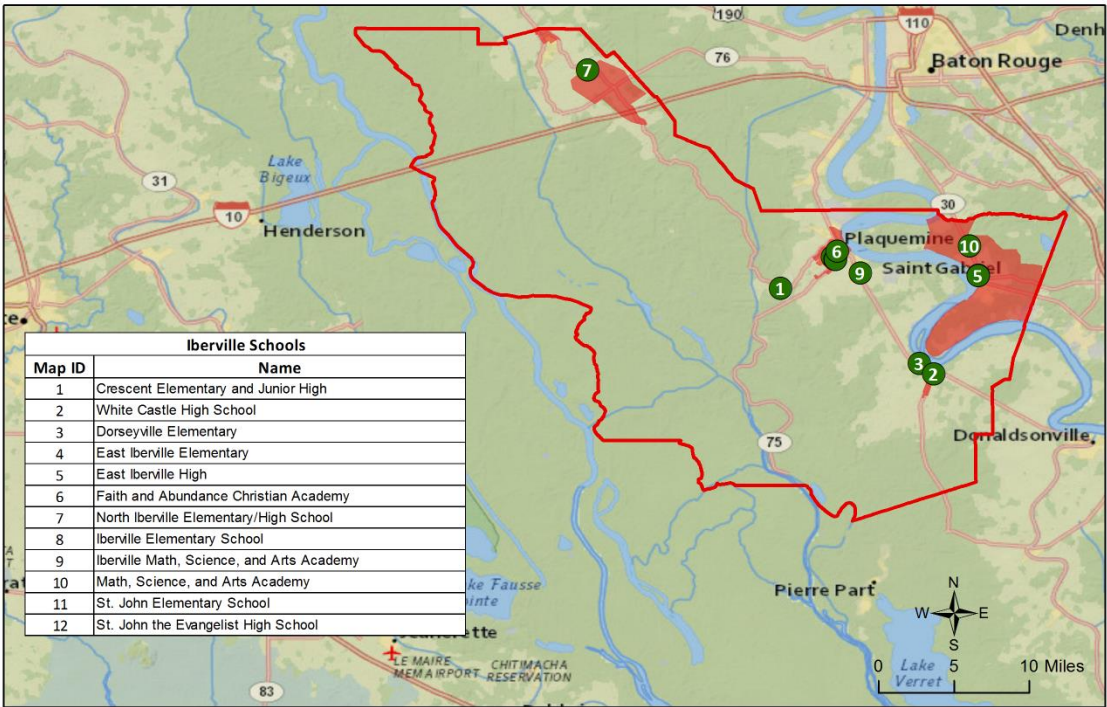
Critical Facilities – Law Enforcement



Critical Facilities – Public Health

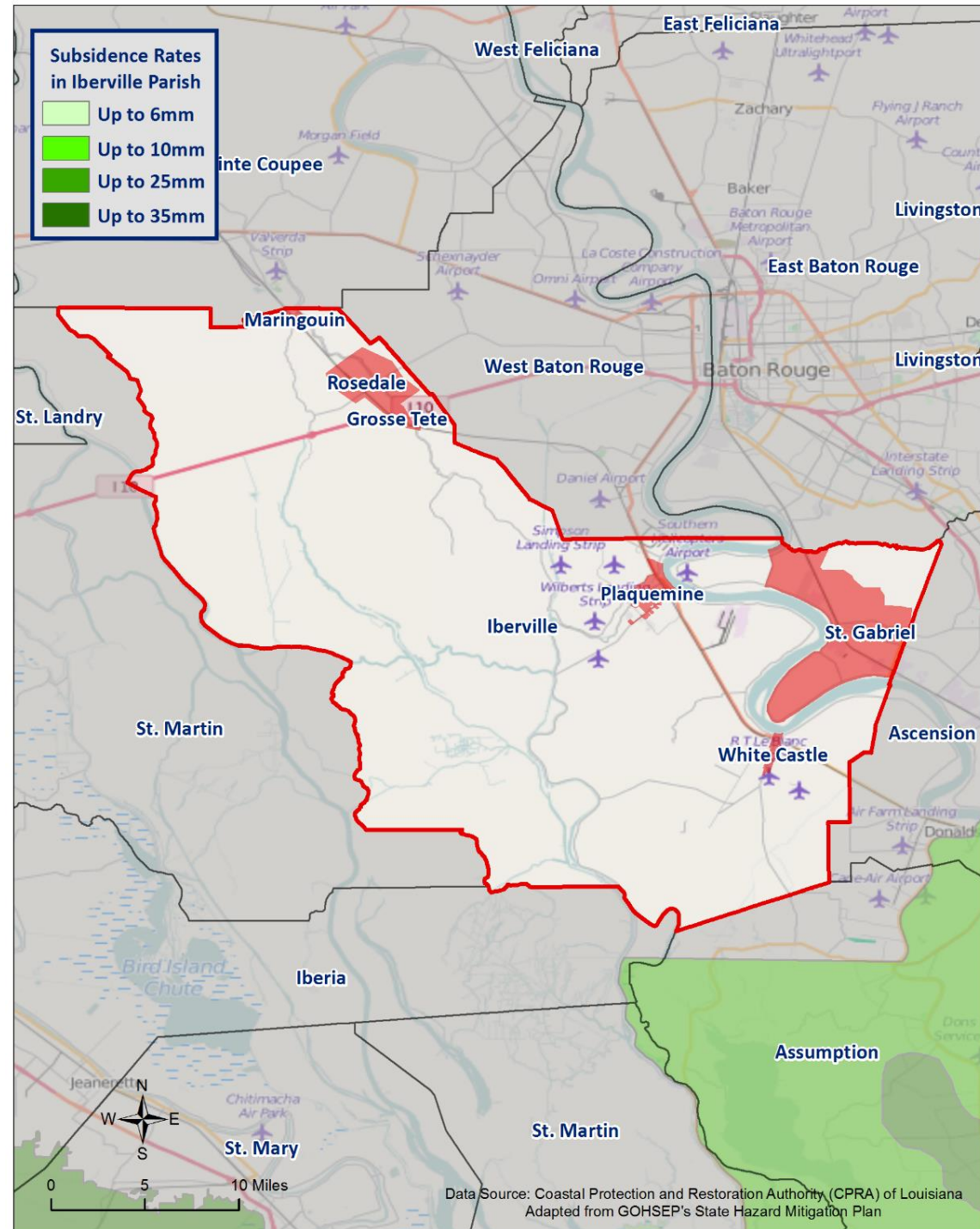


Critical Facilities – Schools



Coastal Land Loss/Subsidence

*Discounted



Flooding

- A flood is the overflow of water onto land that is usually not inundated.
- The National Flood Insurance Program defines a flood as a general and temporary condition of partial or complete inundation of two or more acres of normally dry land area or of two or more properties from overflow of inland or tidal waves, unusual and rapid accumulation or runoff of surface waters from any source, mudflow, or collapse or subsidence of land along the shore of a lake or similar body of water as a result of erosion or undermining caused by waves or currents of water exceeding anticipated cyclical levels that result in a flood as defined above.

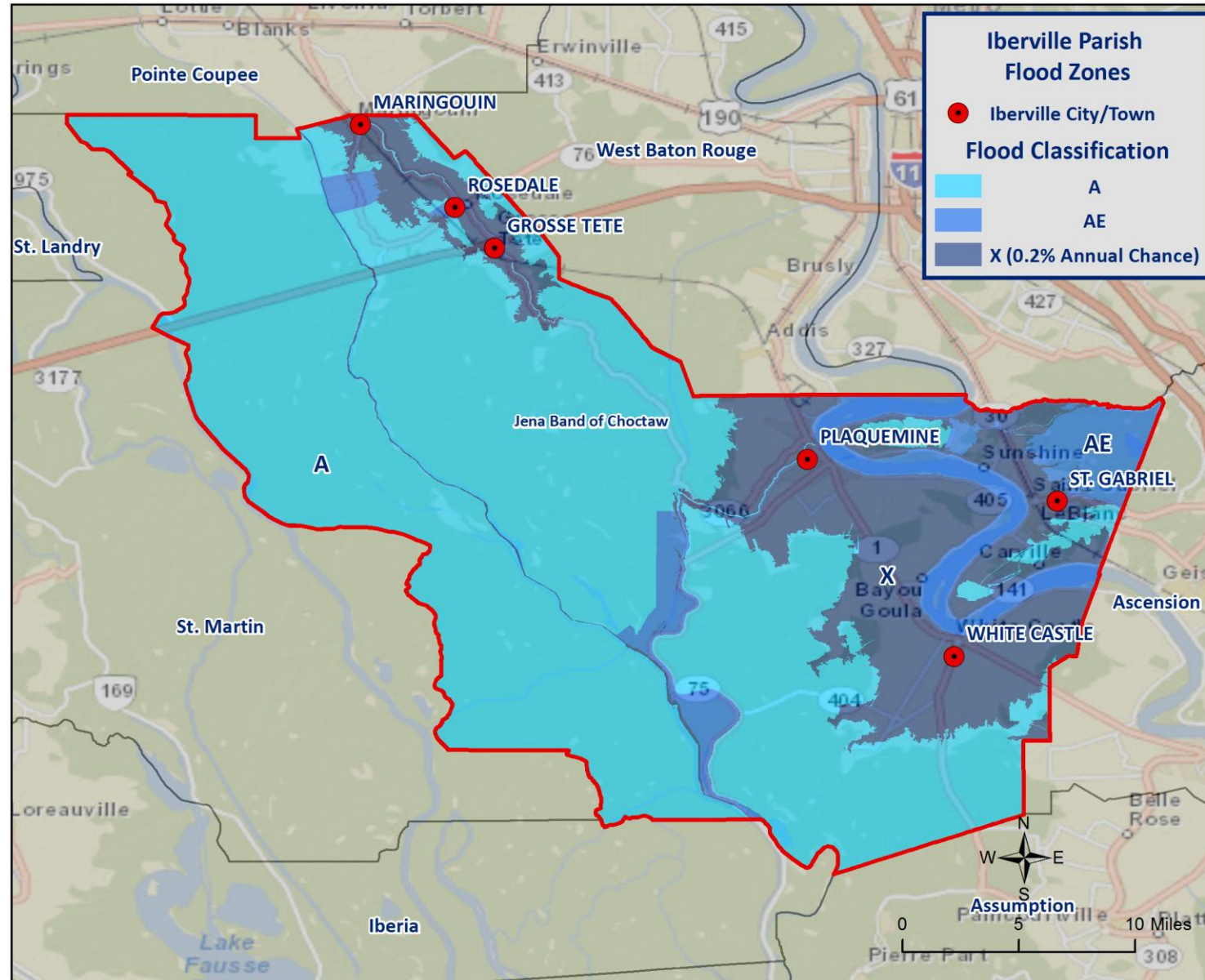
Flooding

Types of flooding may include the following:

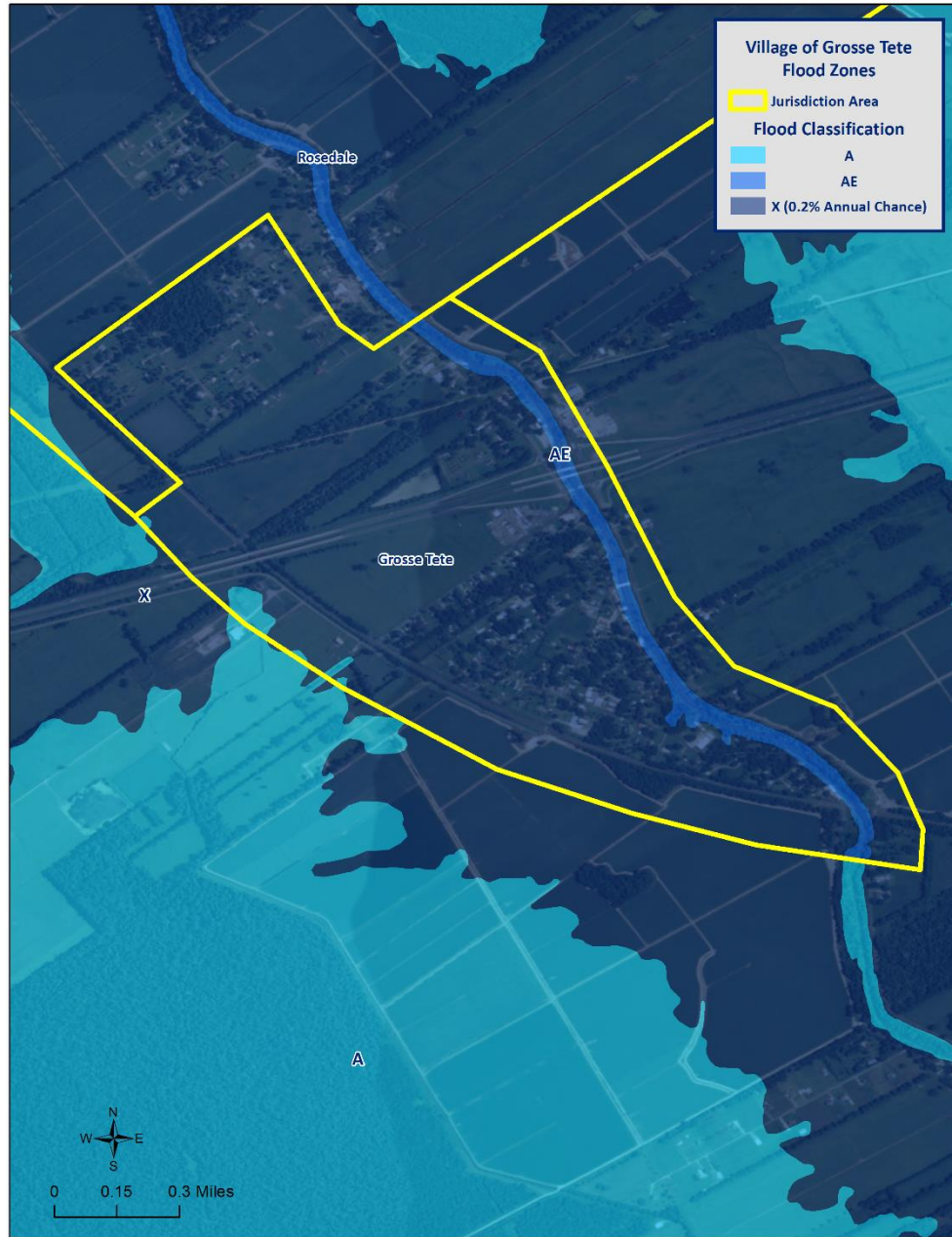
- Riverine
- Flash
- Ponding
- Backwater
- Urban
- Coastal



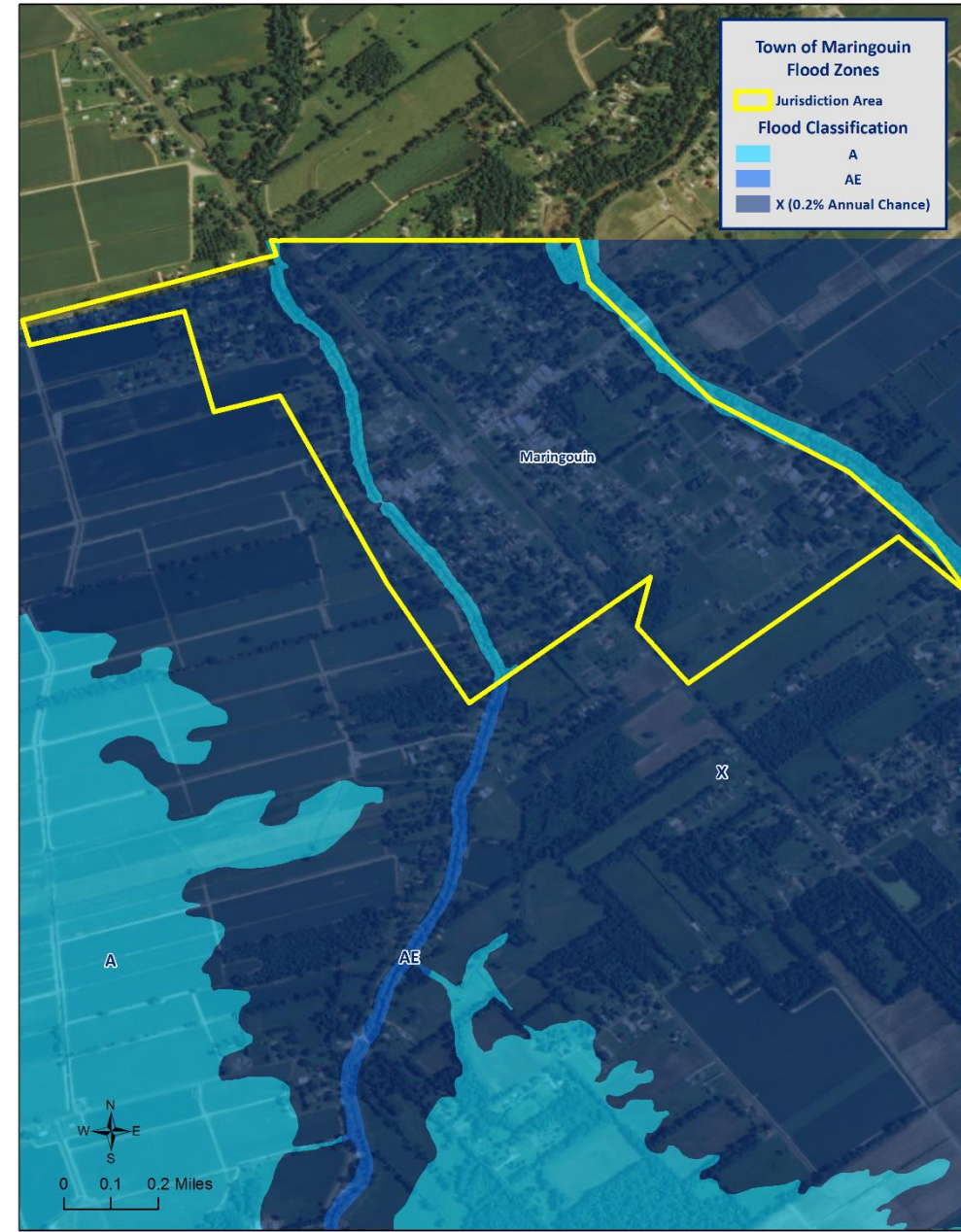
Flood Zone Classifications – Parish/Jurisdictions



Flood Zone Classifications

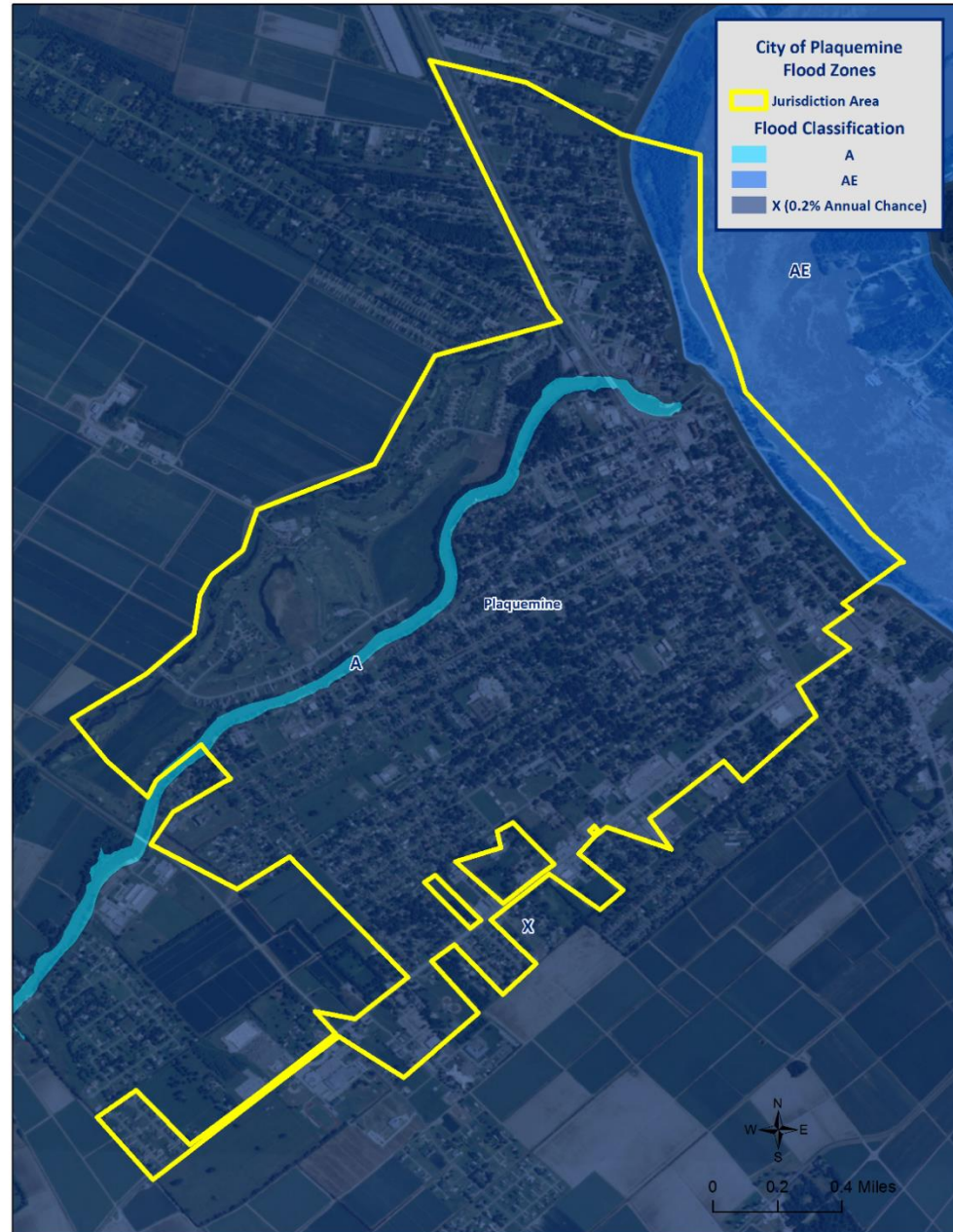


Village of
Grosse Tete

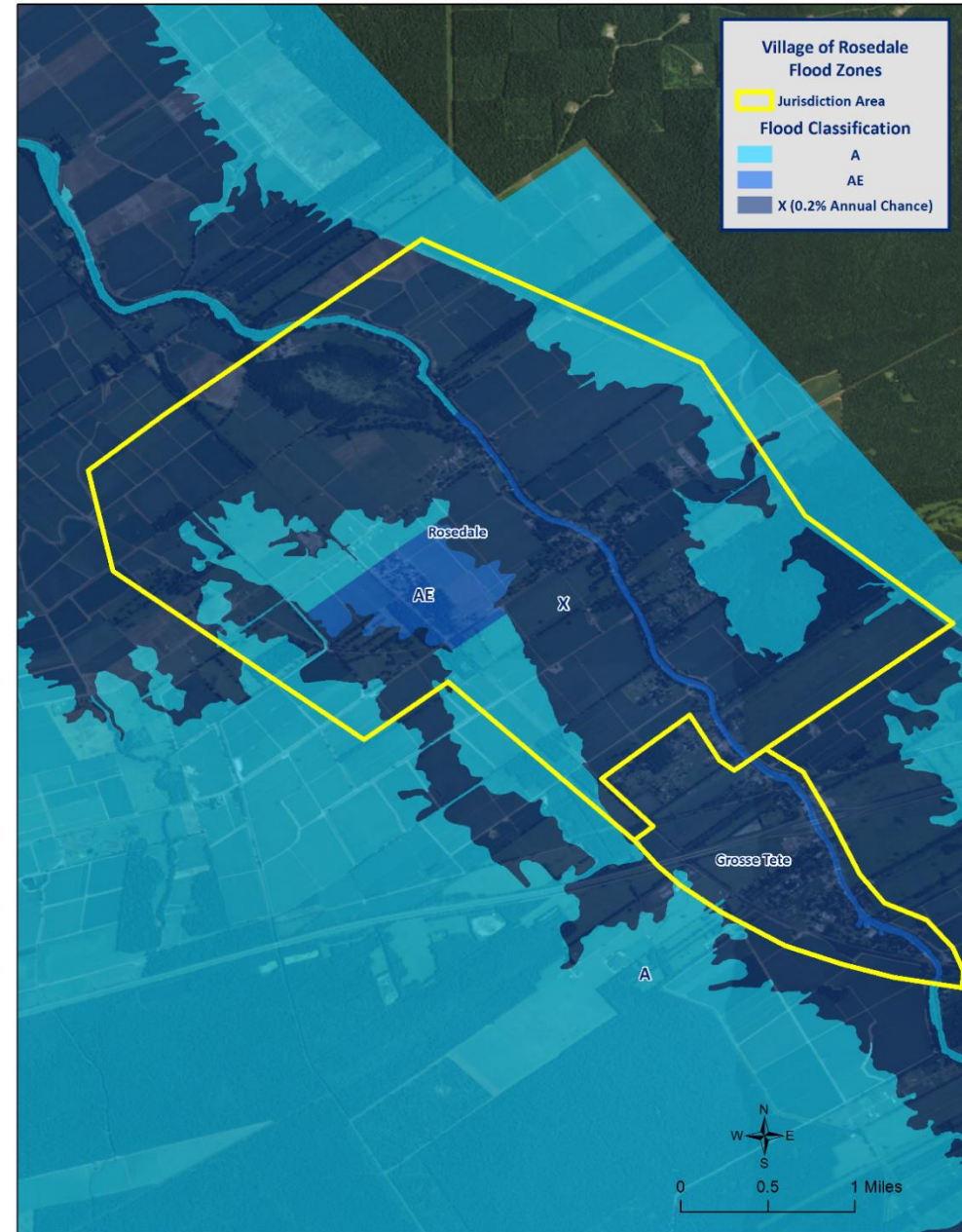


Town of
Maringouin

Flood Zone Classifications

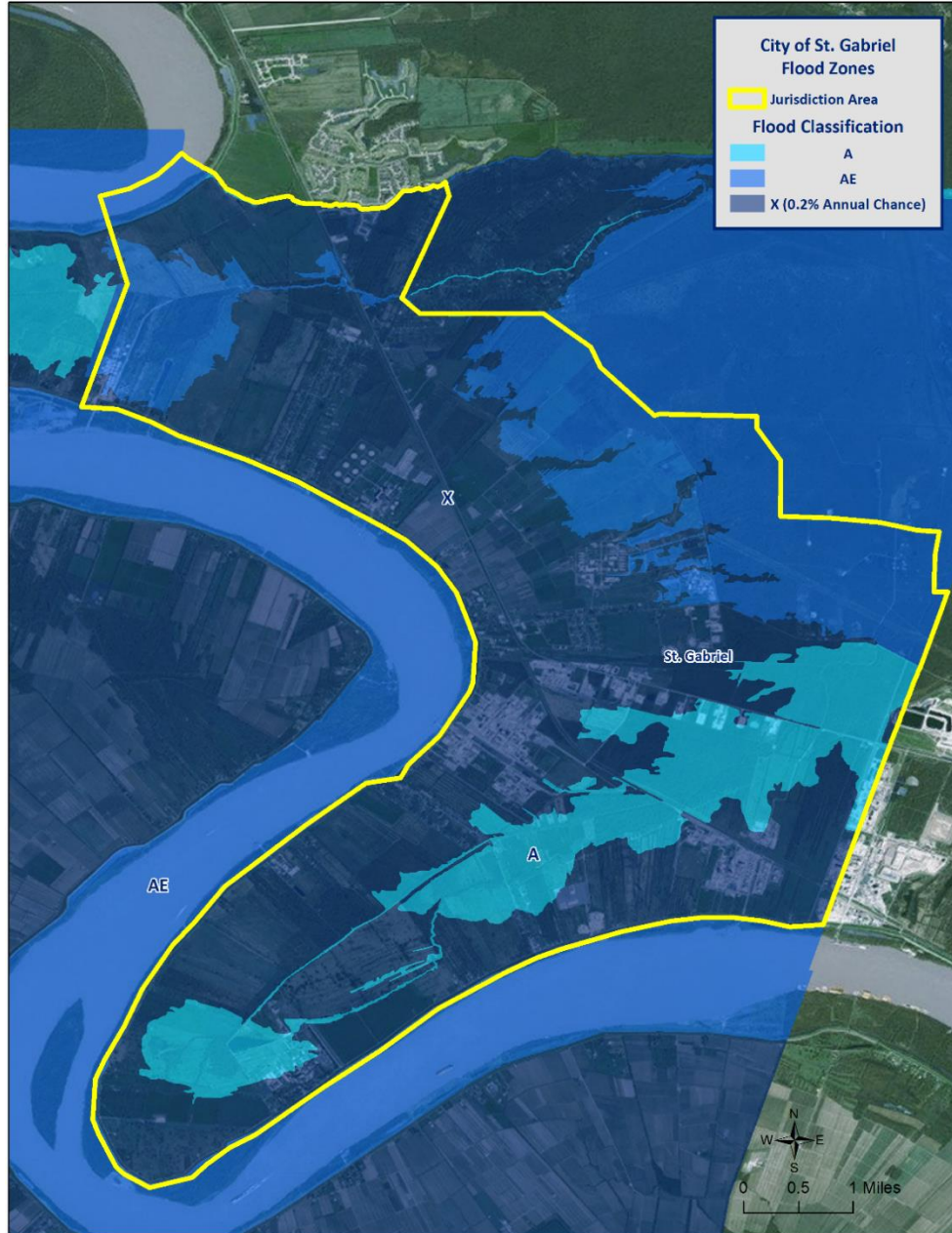


City of
Plaquemine

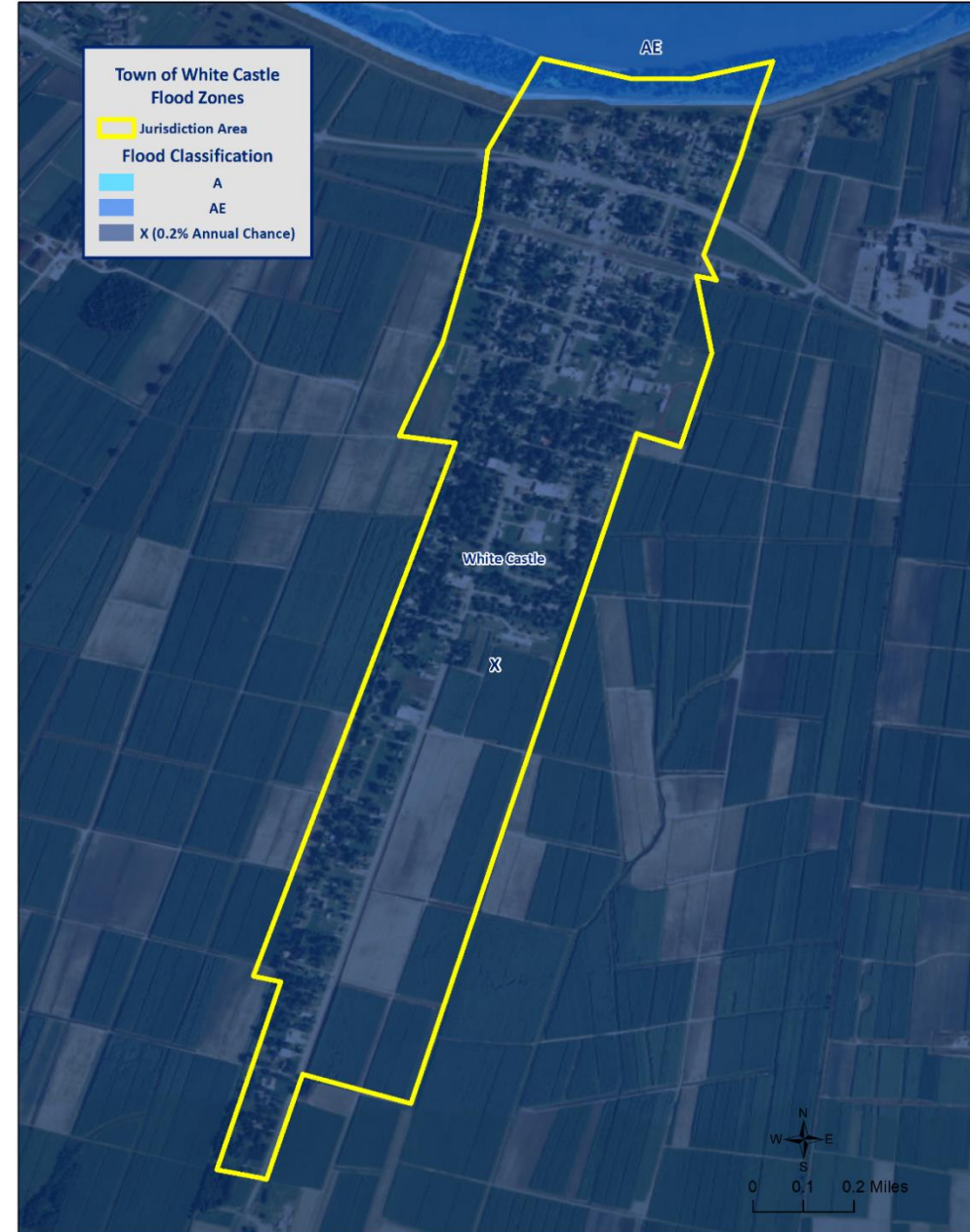


Village of
Rosedale

Flood Zone Classifications

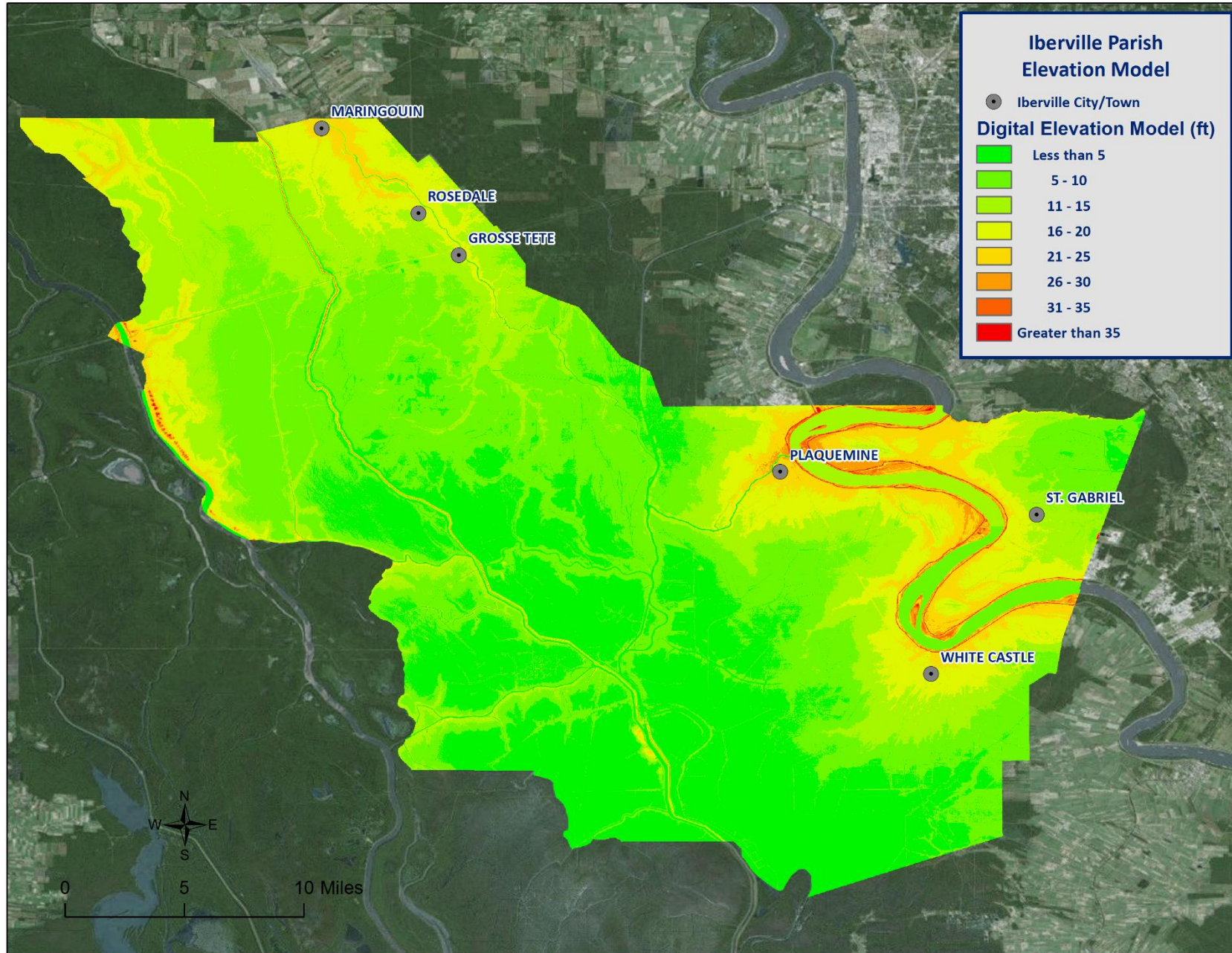


City of St.
Gabriel



Town of
White Castle

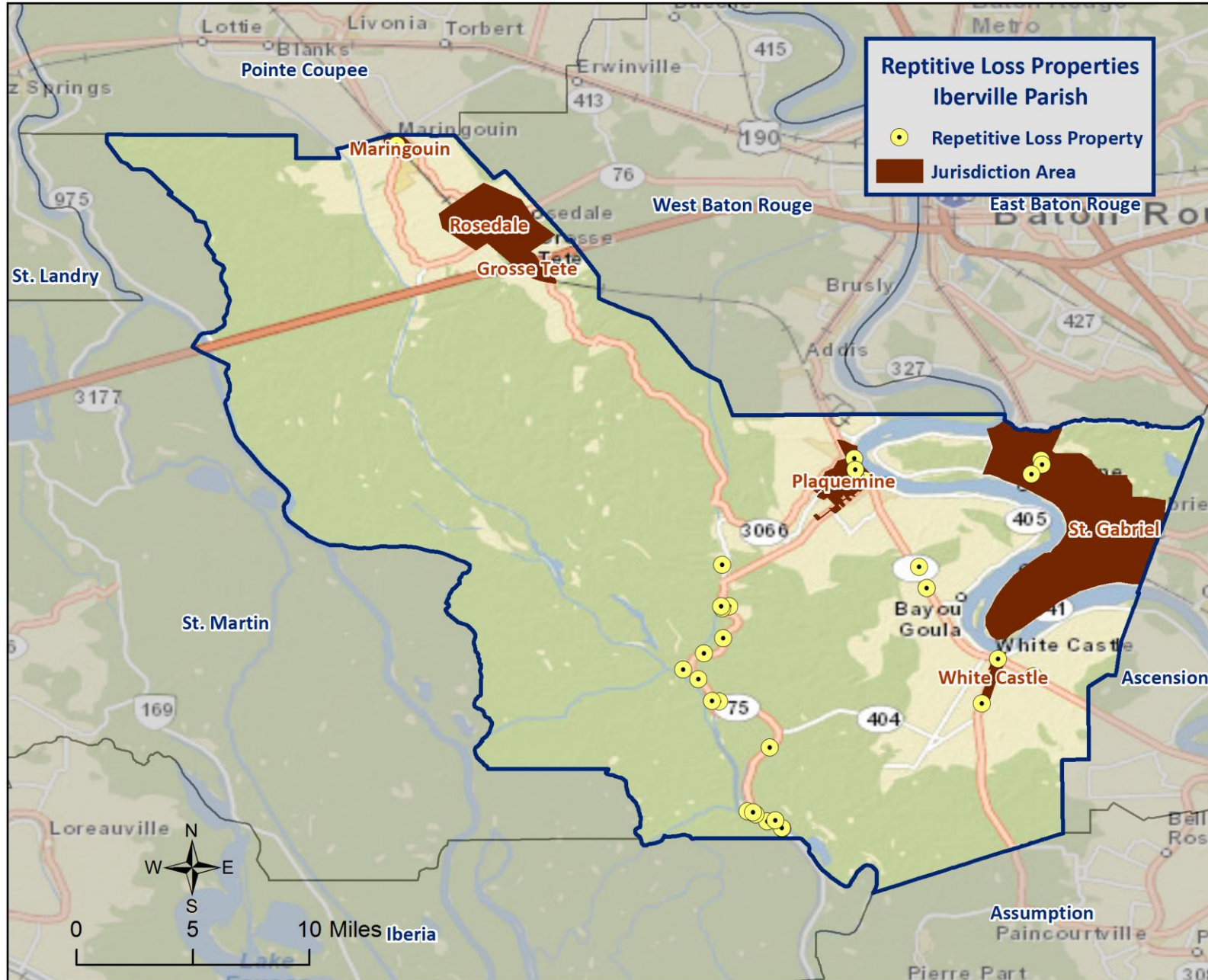
Flooding Elevation Model



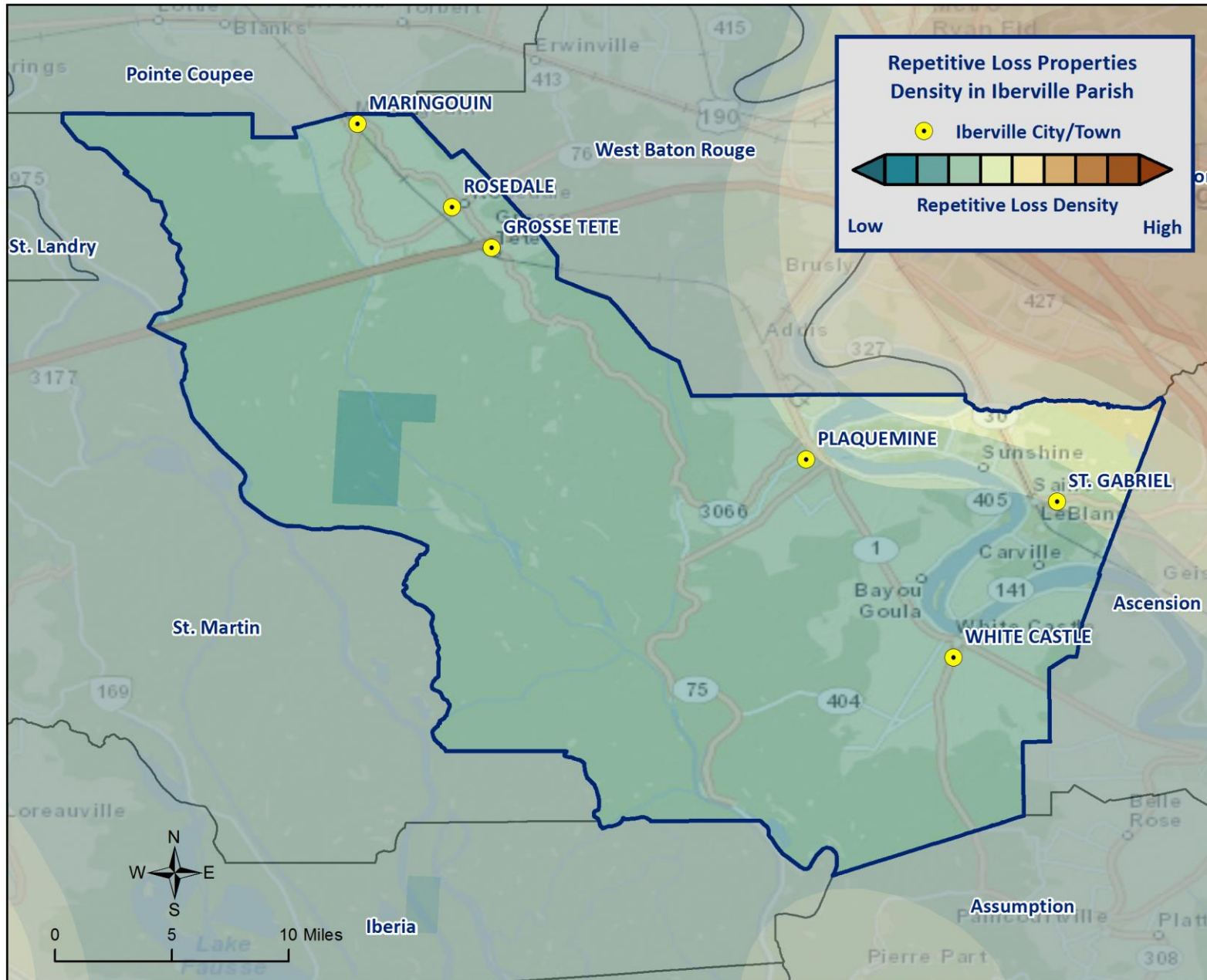
Repetitive Flooding

- Some areas flood more often than other properties, even more than those in the mapped 100-year floodplain.
- FEMA defines a “repetitive loss” property as one which has received two flood insurance claim payments for at least \$1,000 over any 10-year period since 1978.
- These properties are important to the National Flood Insurance Program and the Community Rating System because even though they comprise 1% of the policy base, they account for 30% of the country’s flood insurance claim payments.

Repetitive Loss Properties



Repetitive Loss Properties Density Model

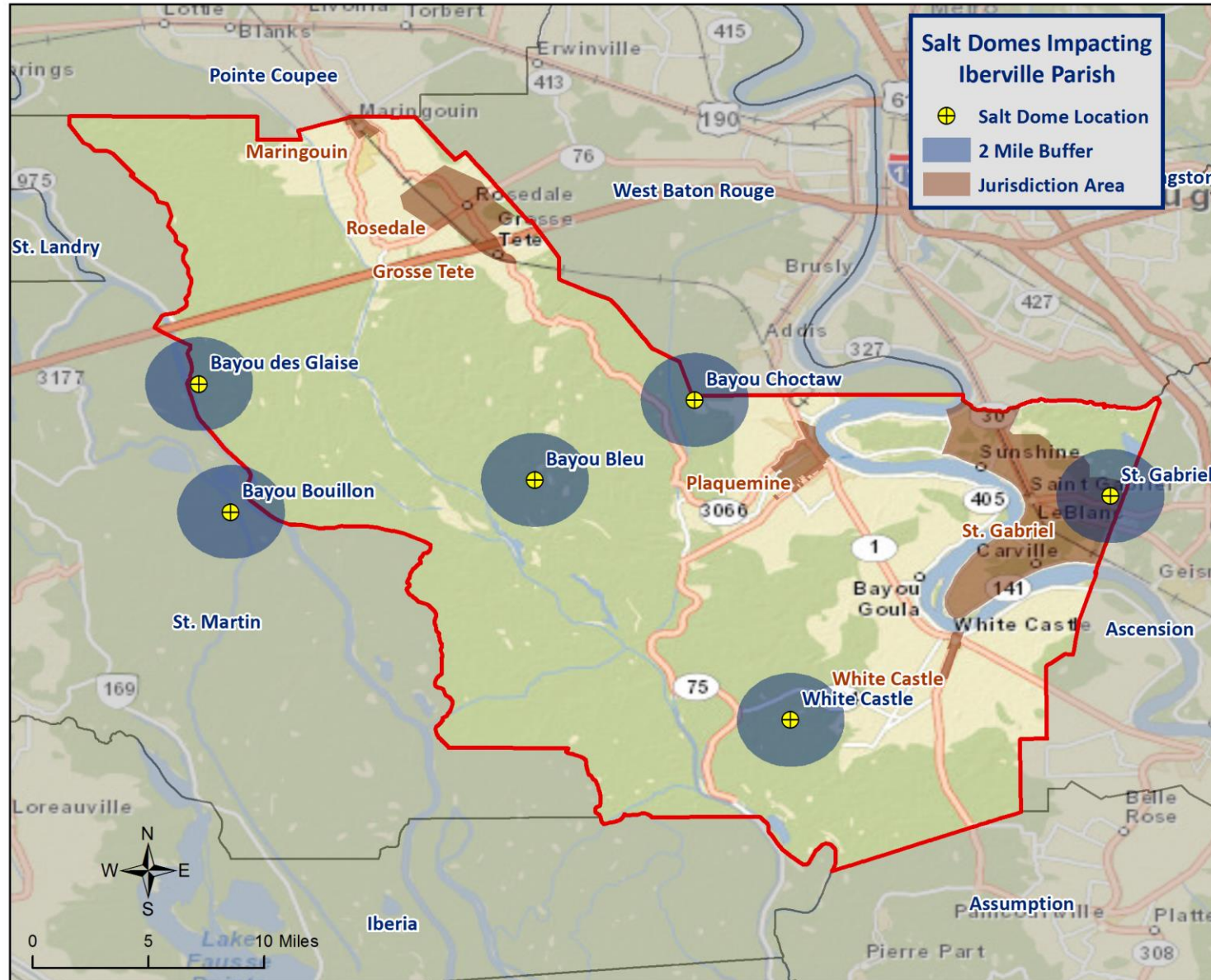


Sinkholes

- A sinkhole is an area of ground that has no natural external surface drainage – when it rains, all of the water stays inside the sinkhole and typically drains into the subsurface.
- Sinkholes form in areas where the rock below the land surface is limestone, carbonate rock, salt beds, or rocks that can naturally be dissolved by groundwater circulating through them.
- As the rock dissolves, spaces and caverns develop underground. Once the spaces underground become too large, there is not enough support for the land above the spaces which causes a sudden collapse on the land surface.



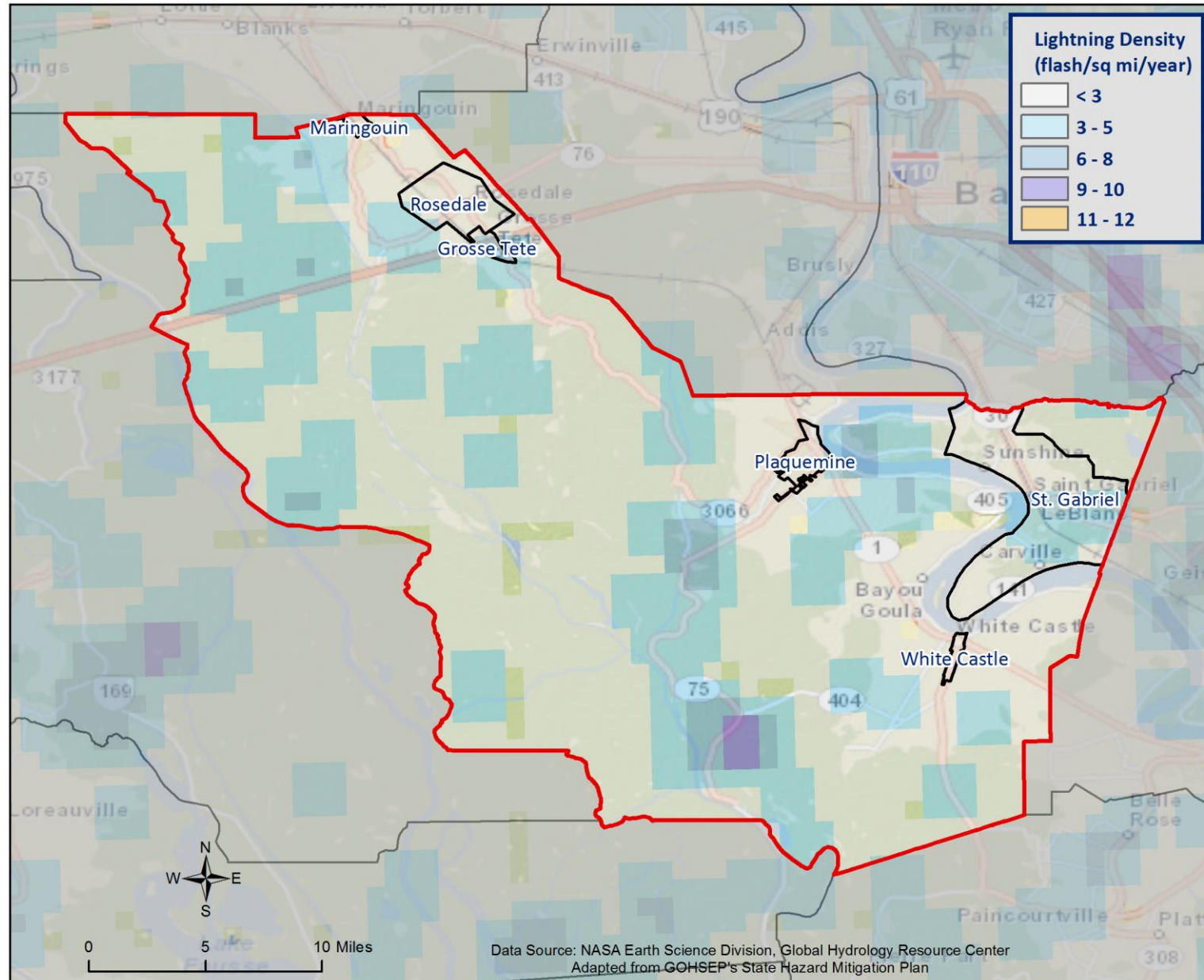
Salt Dome Locations



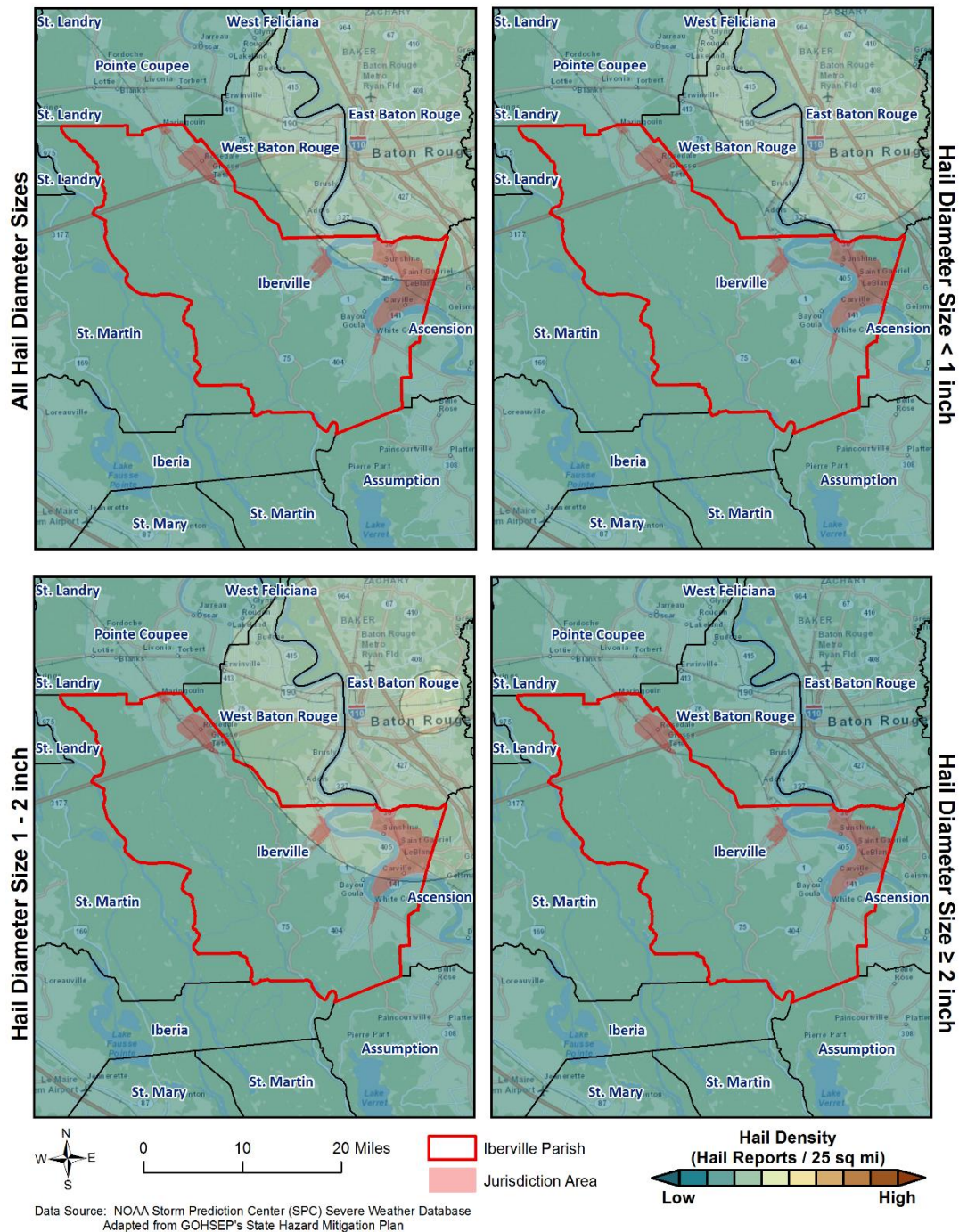
Thunderstorms – Lightning/High Wind/Hail

- A **thunderstorm**, also known as an **electrical storm**, a **lightning storm**, or a **thundershower**, is a type of storm characterized by the presence of lightning and its acoustic effect on the Earth's atmosphere known as thunder.
- They are usually accompanied by strong winds, heavy rain, and sometimes snow, sleet, or hail.
- Thunderstorms may line up in a series or rainband, known as a squall line. Strong or severe thunderstorms may rotate, known as supercells. While most thunderstorms move with the mean wind flow through the layer of the troposphere that they occupy, vertical wind shear causes a deviation in their course at a right angle to the wind shear direction.

Lightning Density Model



Hail Density Models



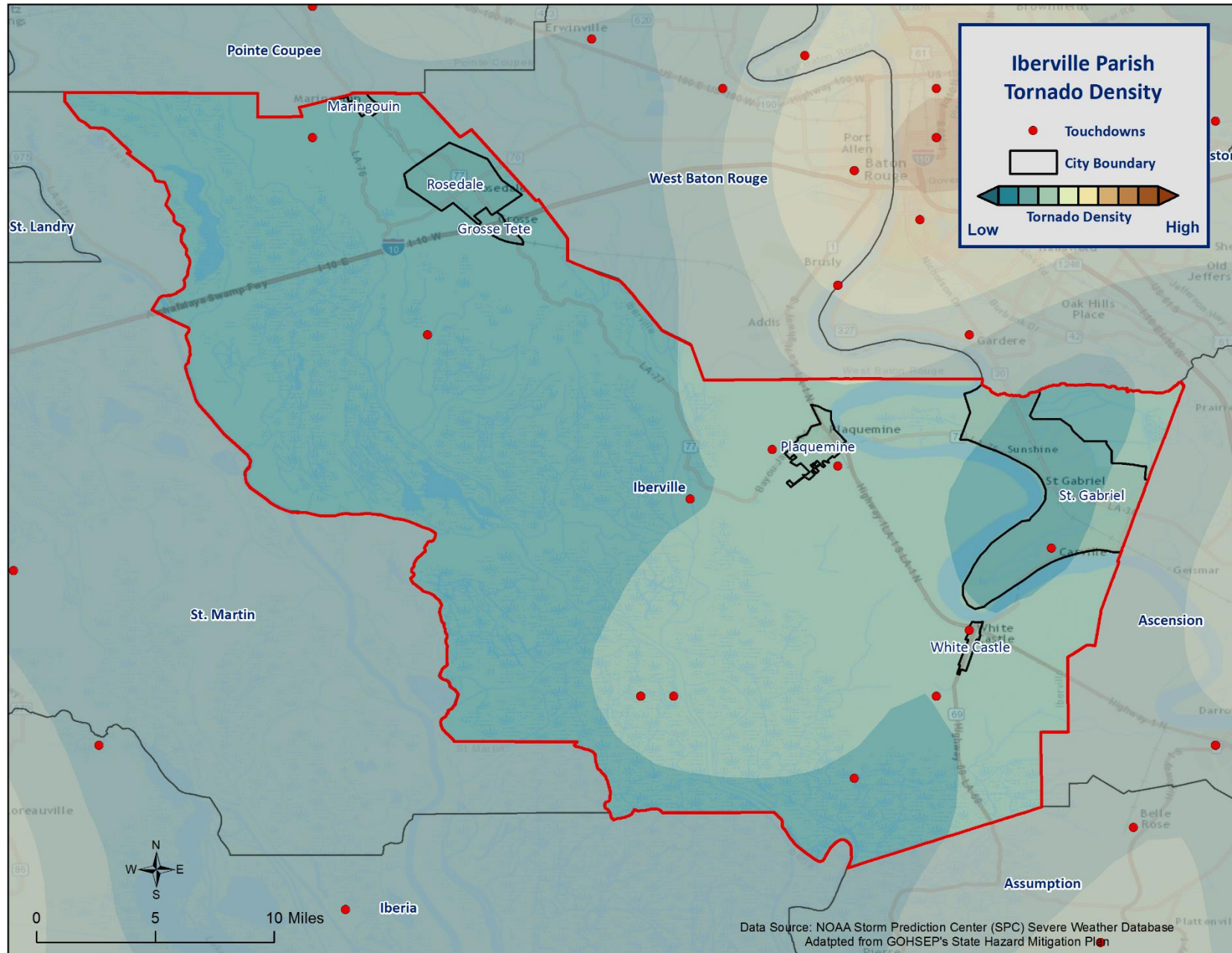
Tornadoes

- Tornadoes (also called twisters and cyclones) are rapidly rotating funnels of wind extending between storm clouds and the ground.
- Tornadoes are the most severe storms for their size, and 70% of the world's reported tornadoes occur within the continental United States.

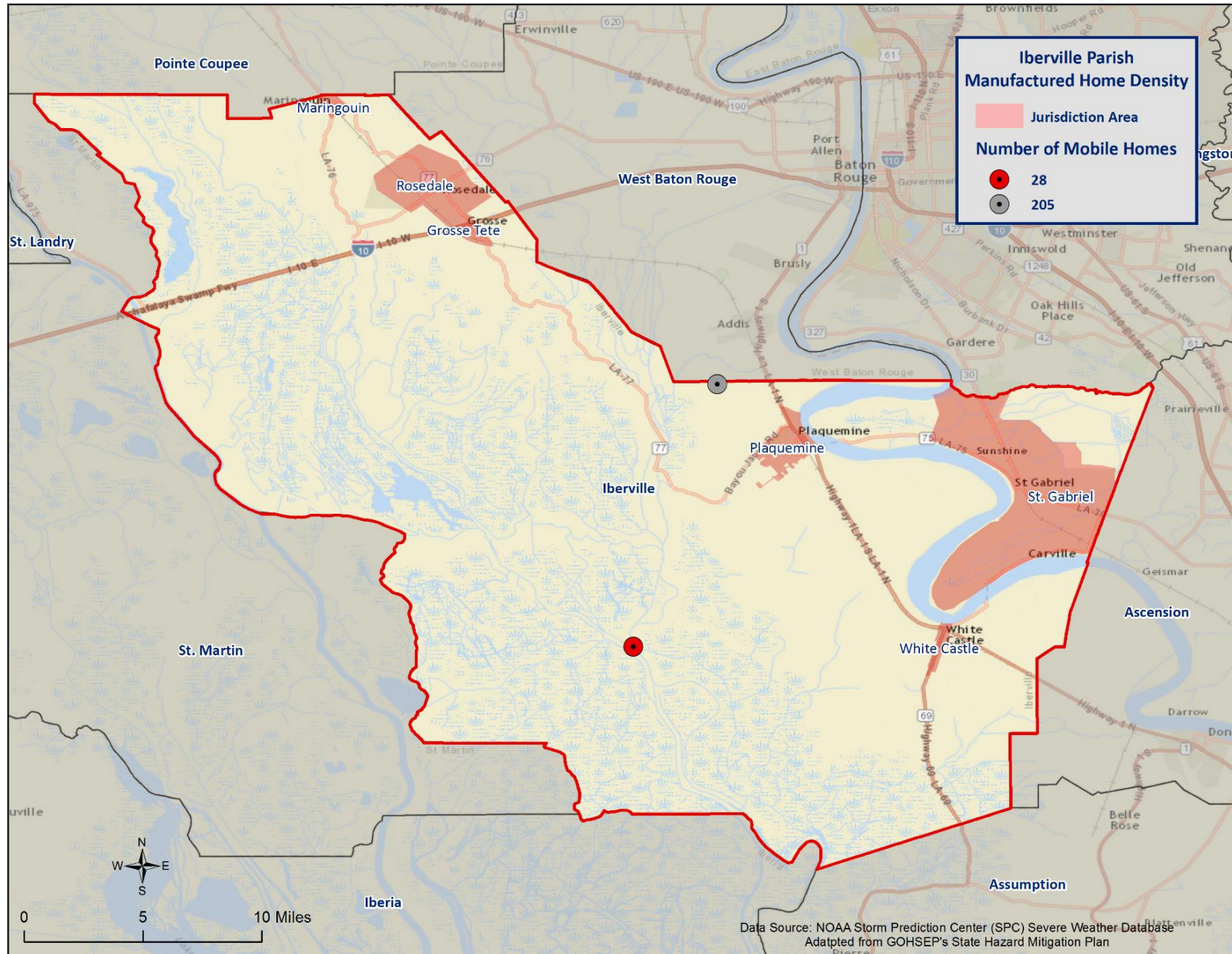


| ORIGINAL FUJITA SCALE | | ENHANCED FUJITA SCALE | |
|--------------------------|-------------|--------------------------|-------------|
| F5 | 261-318 mph | EF5 | +200 mph |
| F4 | 207-260 mph | EF4 | 166-200 mph |
| F3 | 158-206 mph | EF3 | 136-165 mph |
| F2 | 113-157 mph | EF2 | 111-135 mph |
| F1 | 73-112 mph | EF1 | 86-110 mph |
| F0 | <73 mph | EF0 | 65-85 mph |

Tornado Density



Manufactured Home Density



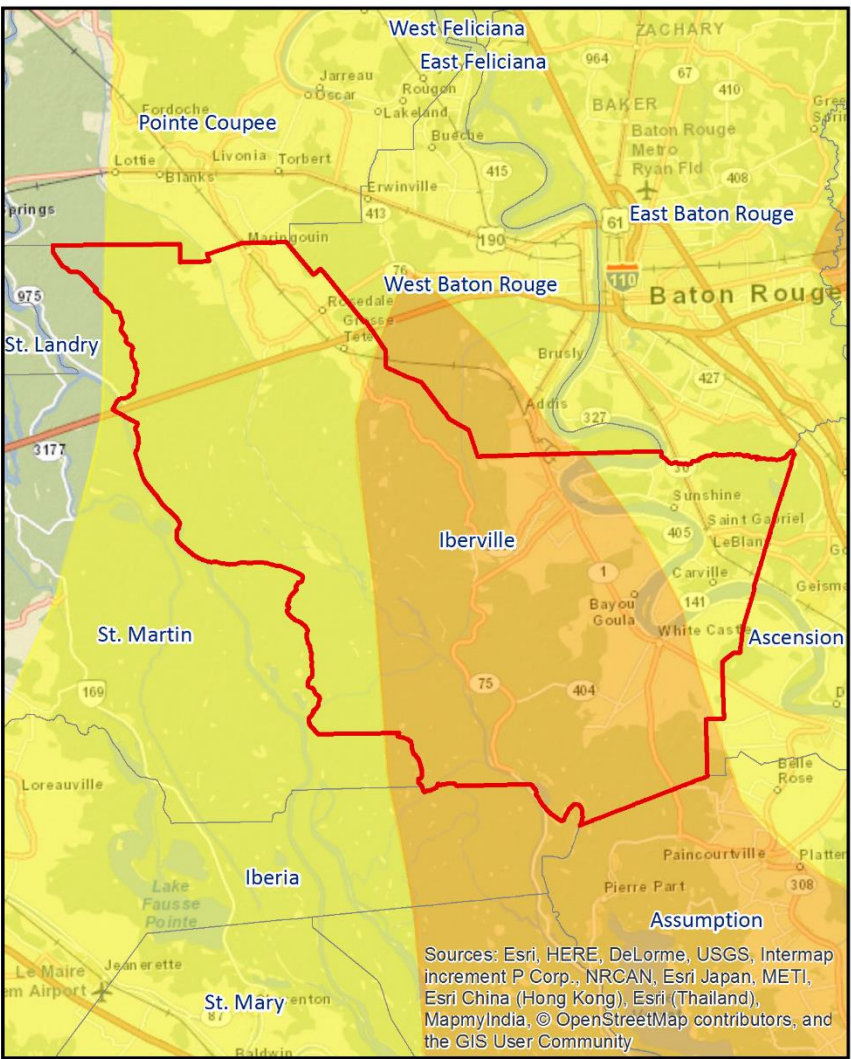
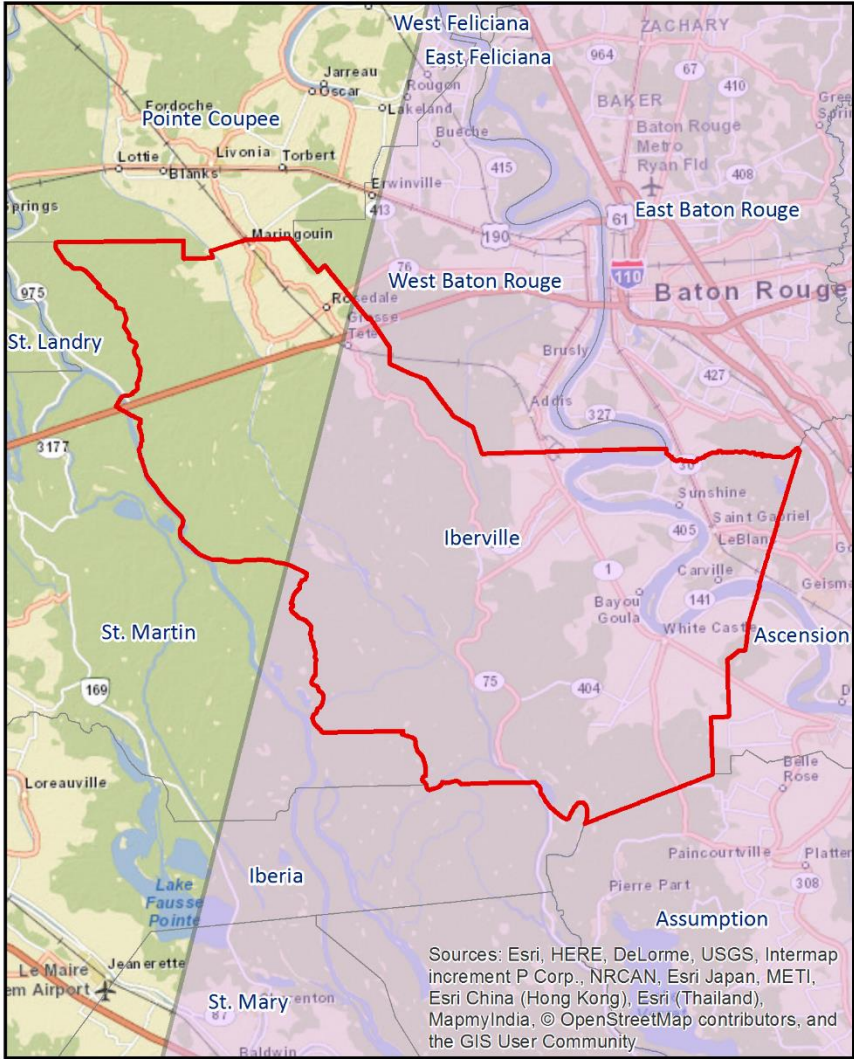
Tropical Cyclones

- Tropical cyclones are defined spinning, low-pressure air masses that draw surface air into their centers and attain strength ranging from weak tropical waves to the most intense hurricanes

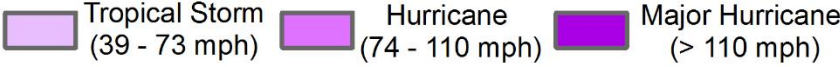
| Saffir-Simpson Hurricane Wind Scale | | |
|-------------------------------------|-----------------------------|--|
| | Sustained Wind Speed | Effects |
| Category 1 | 74-95 mph (119-153 km/hr) | Very dangerous winds will produce some damage. Low-lying coastal roads flooded, minor pier damage |
| Category 2 | 96-110 mph (154-177 km/hr) | Extremely dangerous winds will cause extensive damage. Major damage to exposed mobile homes, evacuation of some shoreline residents |
| Category 3 | 111-130 mph (178-209 km/hr) | Devastating damage will occur. Some structural damage to small buildings; serious flooding at coast and many smaller structures near coast destroyed |
| Category 4 | 131-155 mph (210-249 km/hr) | Catastrophic damage will occur. High risk of injury or death to people, livestock, and pets due to flying and falling debris. Long-term water shortages will increase human suffering. Most of the area will be uninhabitable for weeks or months. |
| Category 5 | > 155 mph (249 km/hr) | Catastrophic damage will occur. People, livestock, and pets are at very high risk of injury or death from flying or falling debris. A high percentage of frame homes will be destroyed. Long-term power outages and water shortages will render area uninhabitable for weeks or months. |



Hurricane Katrina (2005)



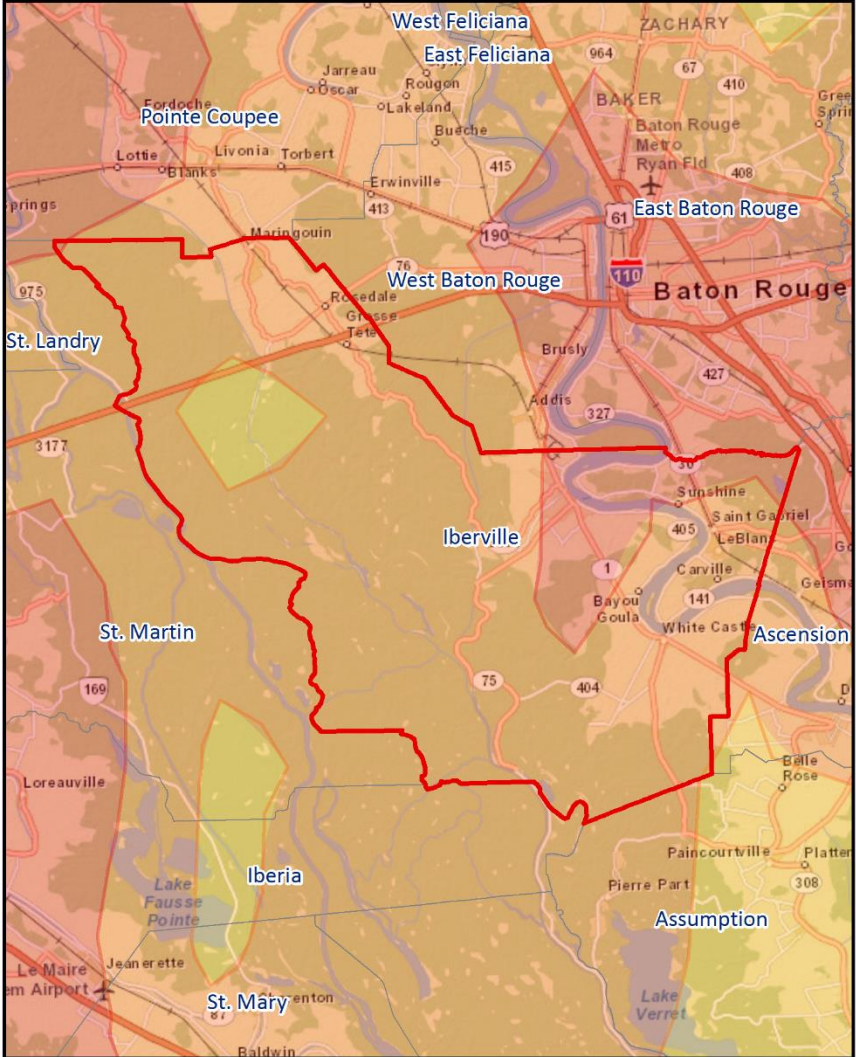
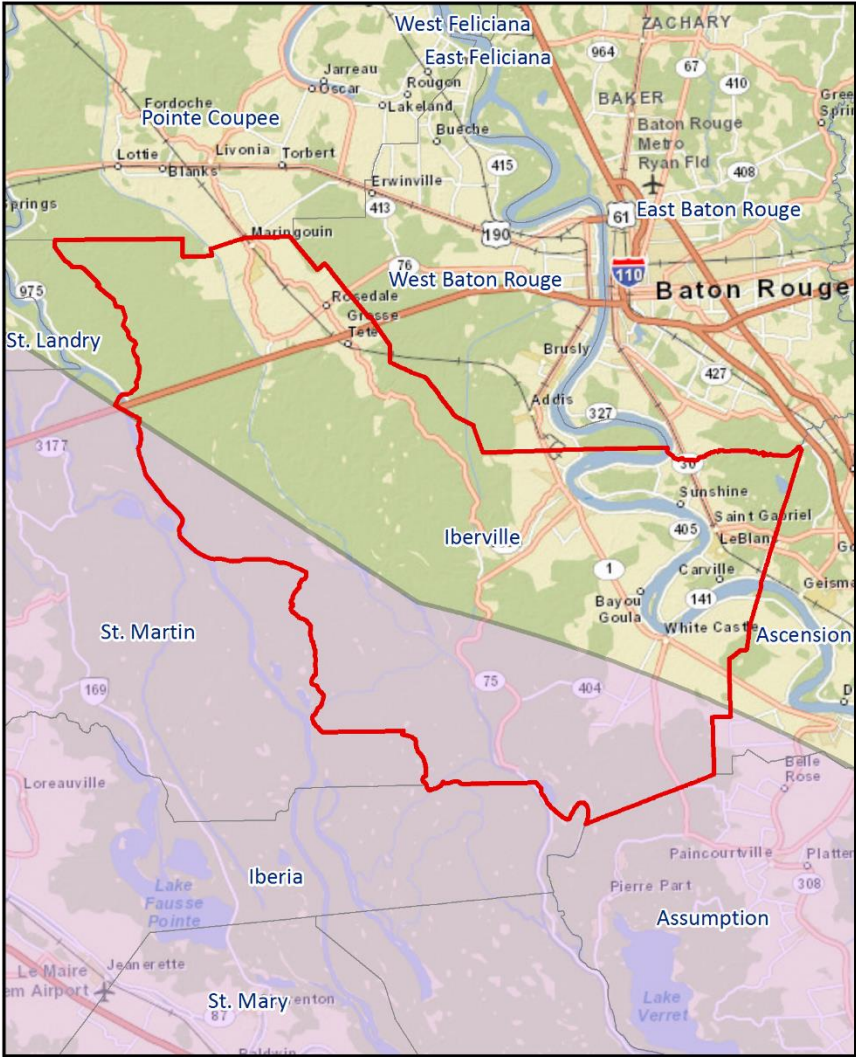
Wind Speed (Saffir-Simpson Scale)



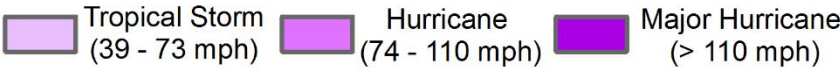
Total Precipitation (inches)



Hurricane Rita (2005)



Wind Speed (Saffir-Simpson Scale)

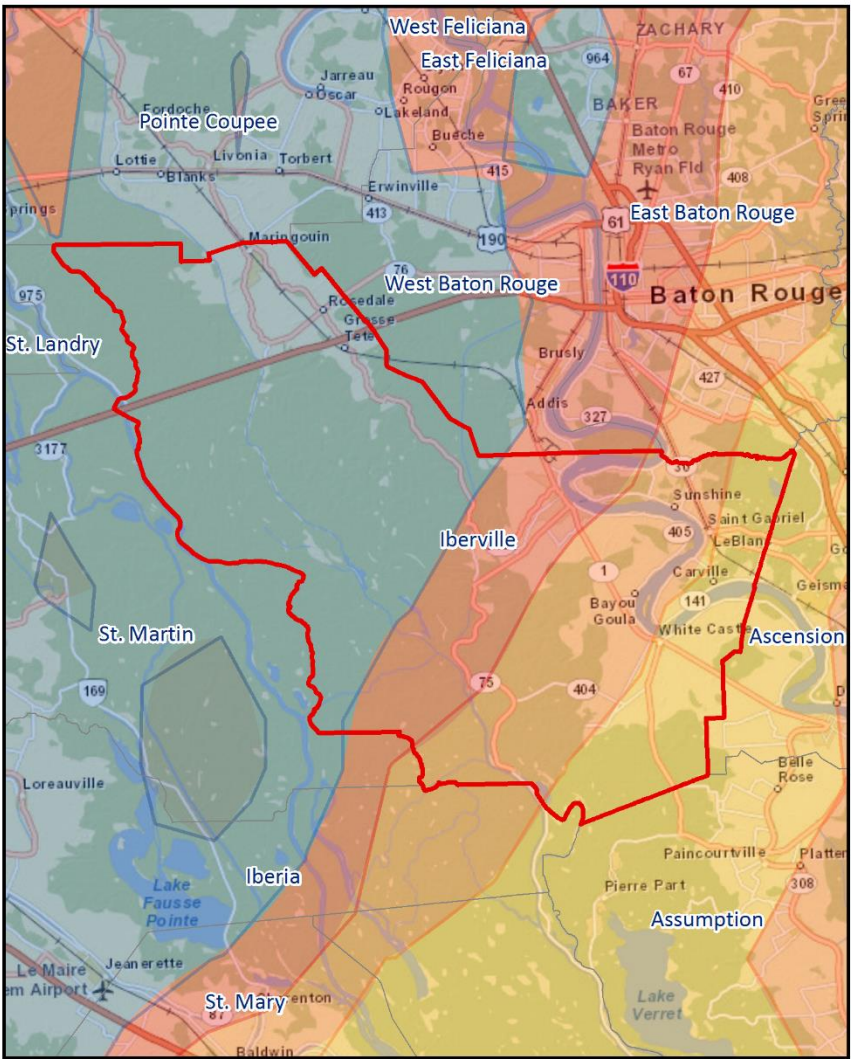
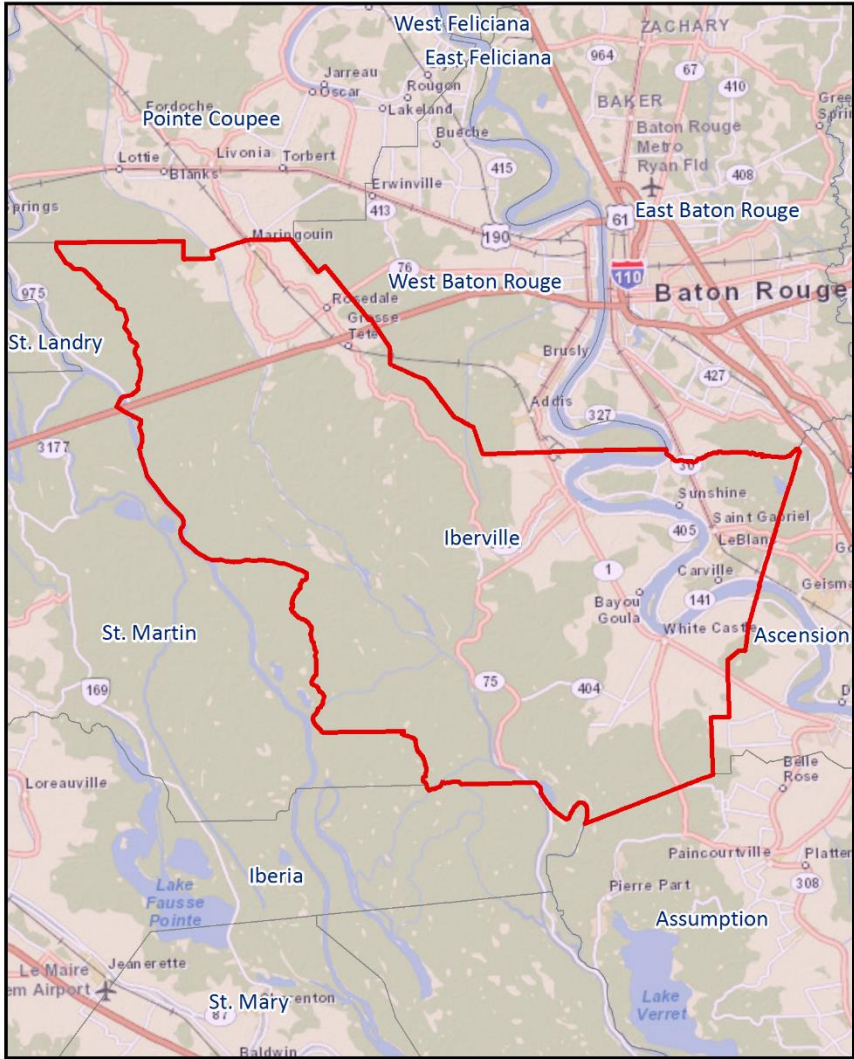


Total Precipitation (inches)

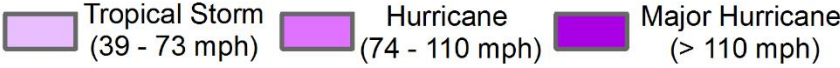


Data Source: NOAA Hurricane Research Division (HRD)
Adapted from GOHSEP's State Hazard Mitigation Plan

Hurricane Gustav (2008)



Wind Speed (Saffir-Simpson Scale)

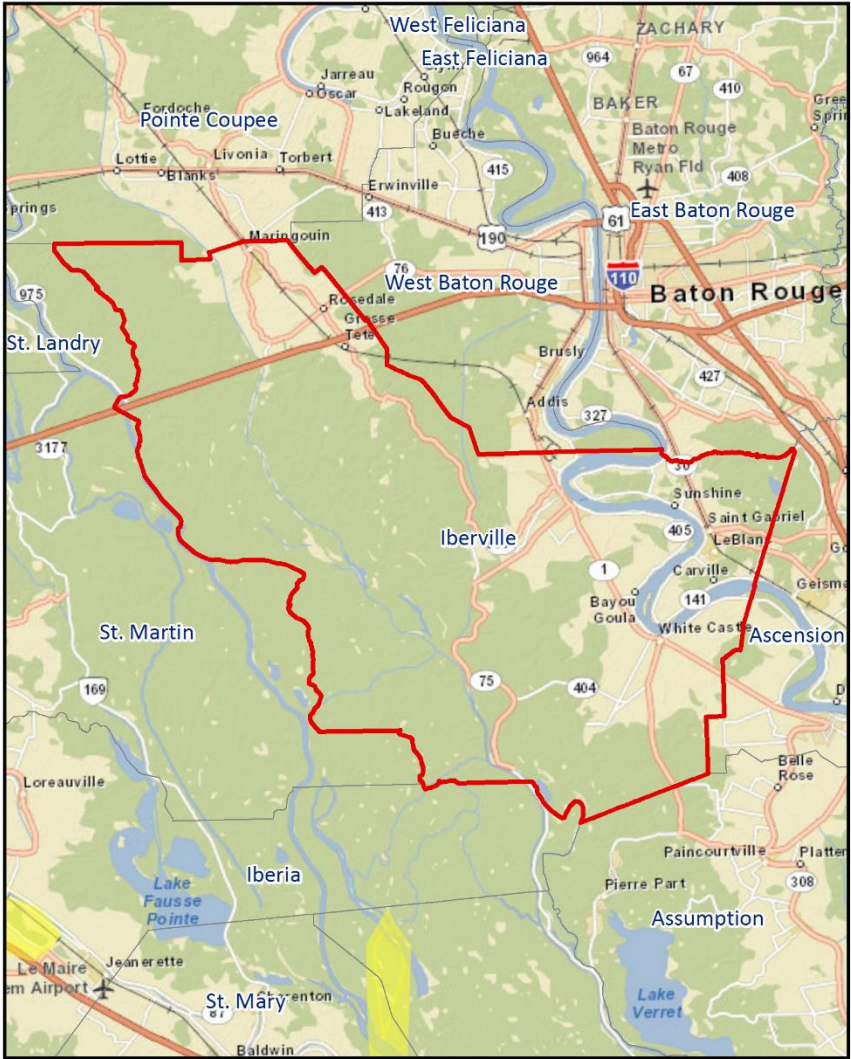
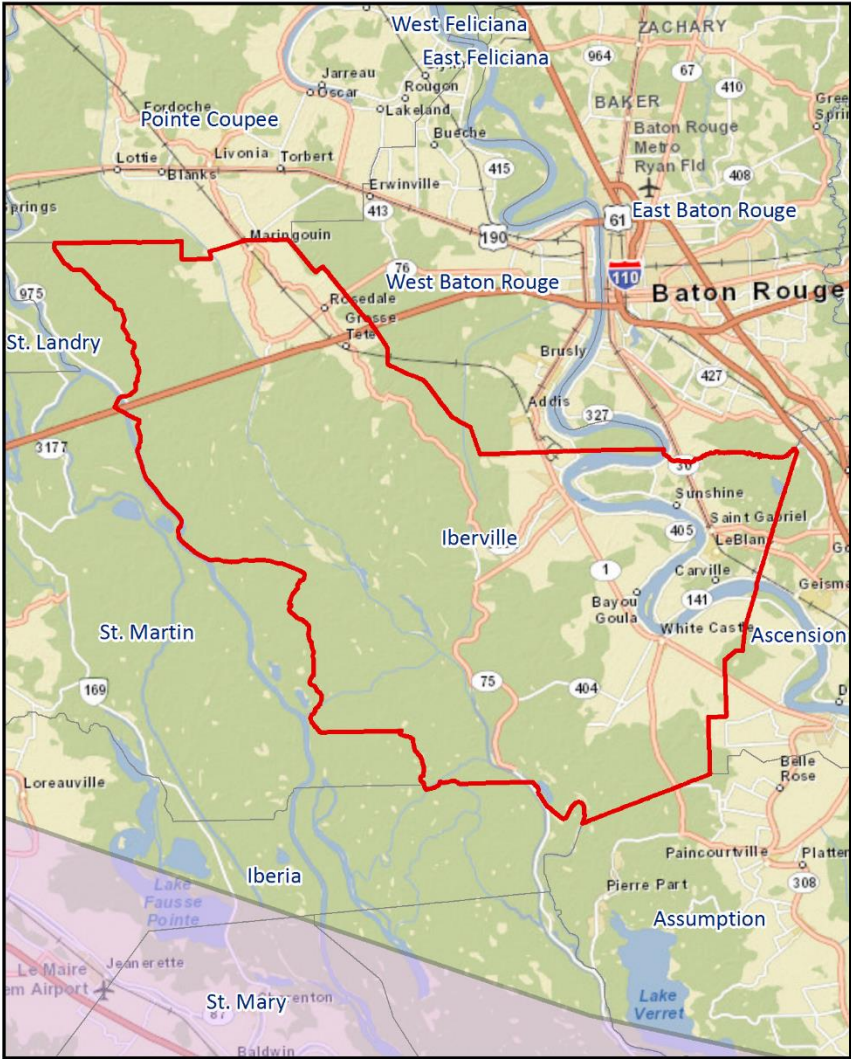


Total Precipitation (inches)

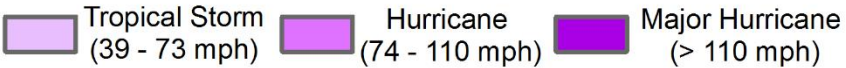


Data Source: NOAA Hurricane Research Division (HRD)
Adapted from GOHSEP's State Hazard Mitigation Plan

Hurricane Ike (2008)



Wind Speed (Saffir-Simpson Scale)

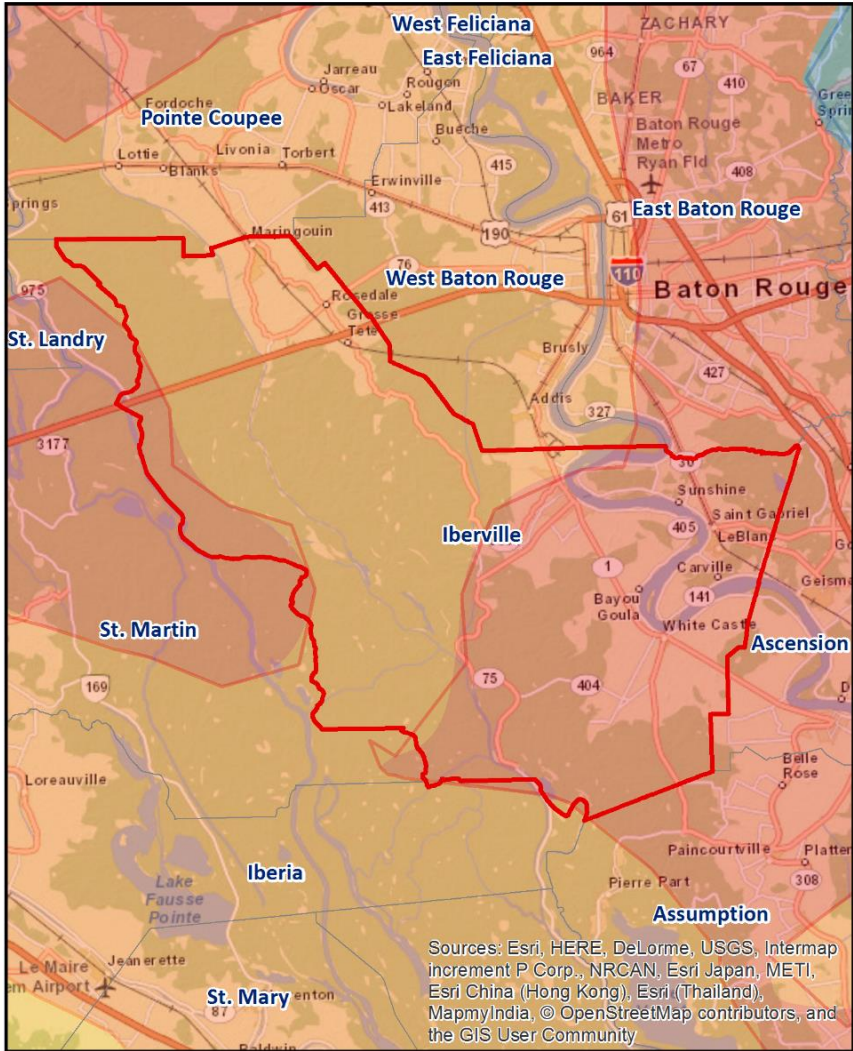


Total Precipitation (inches)

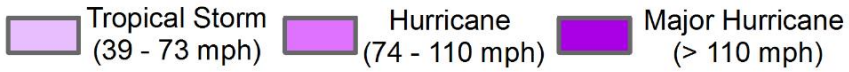


Data Source: NOAA Hurricane Research Division (HRD)
Adapted from GOHSEP's State Hazard Mitigation Plan

Tropical Storm Lee (2011)



Wind Speed (Saffir-Simpson Scale)

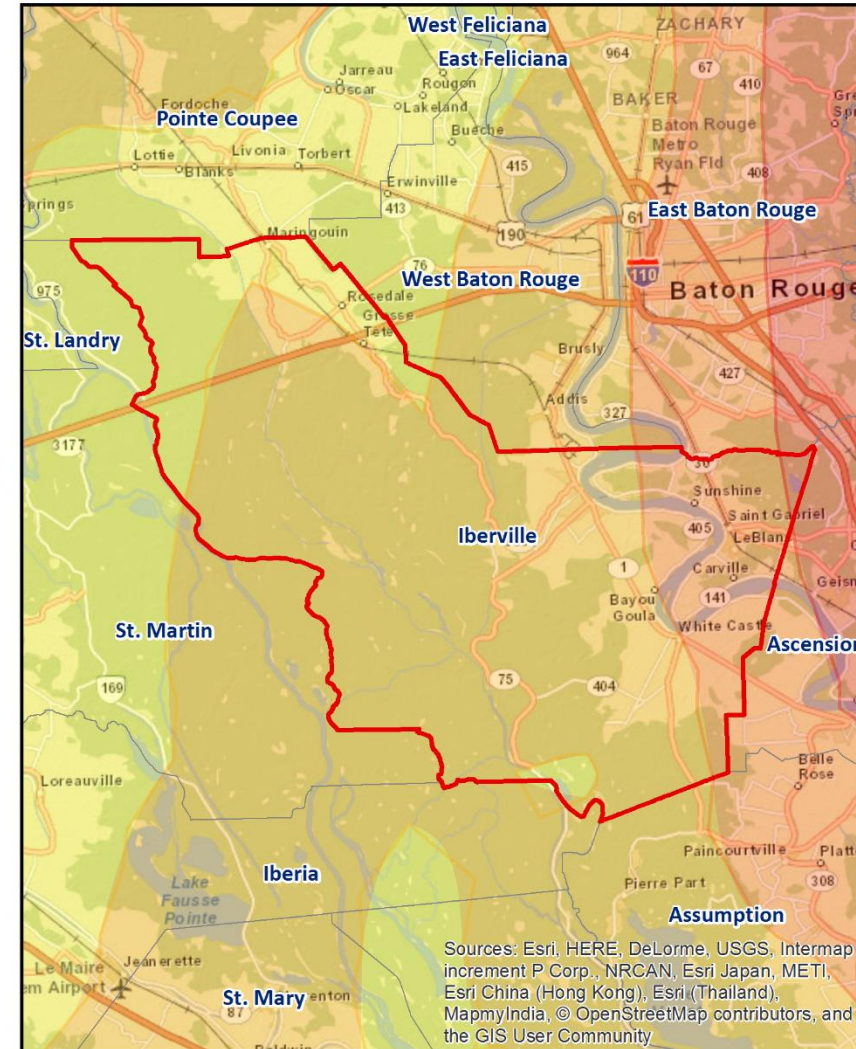
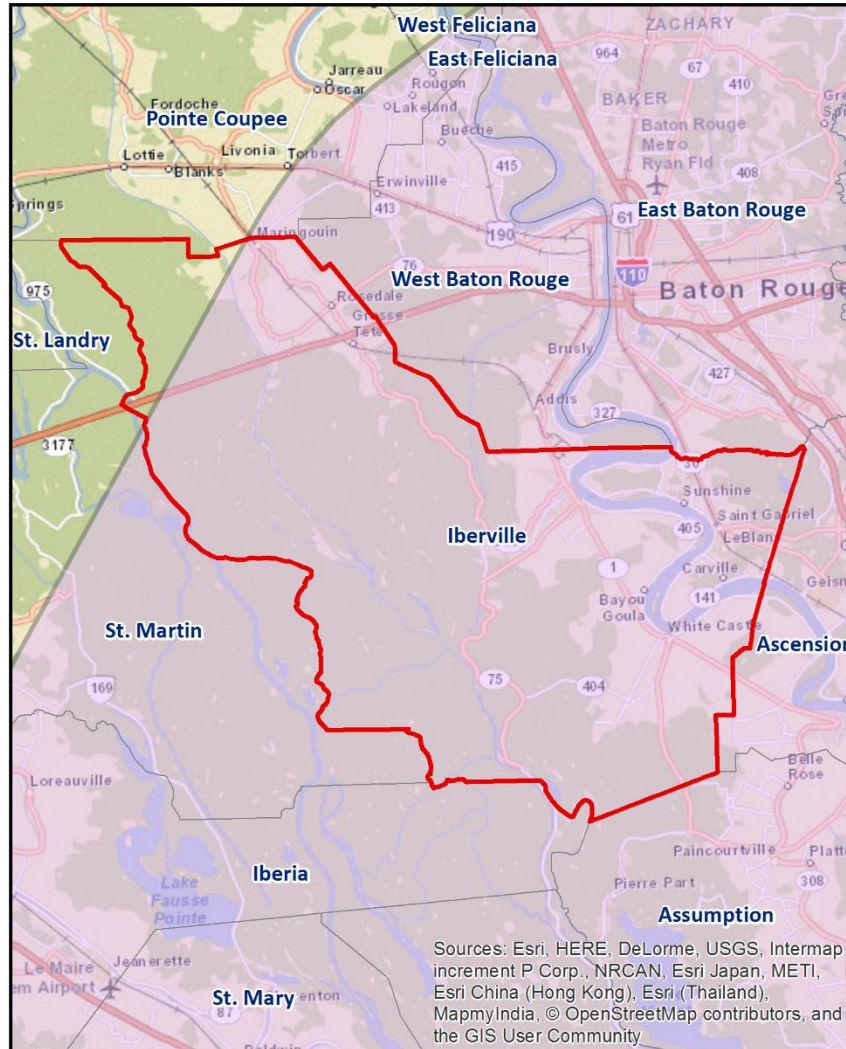


Total Precipitation (inches)

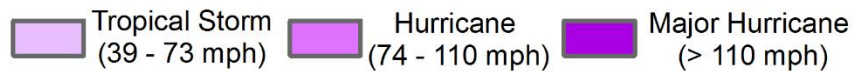


Data Source: NOAA Hurricane Research Division (HRD)
Adapted from GOHSEP's State Hazard Mitigation Plan

Hurricane Isaac (2012)



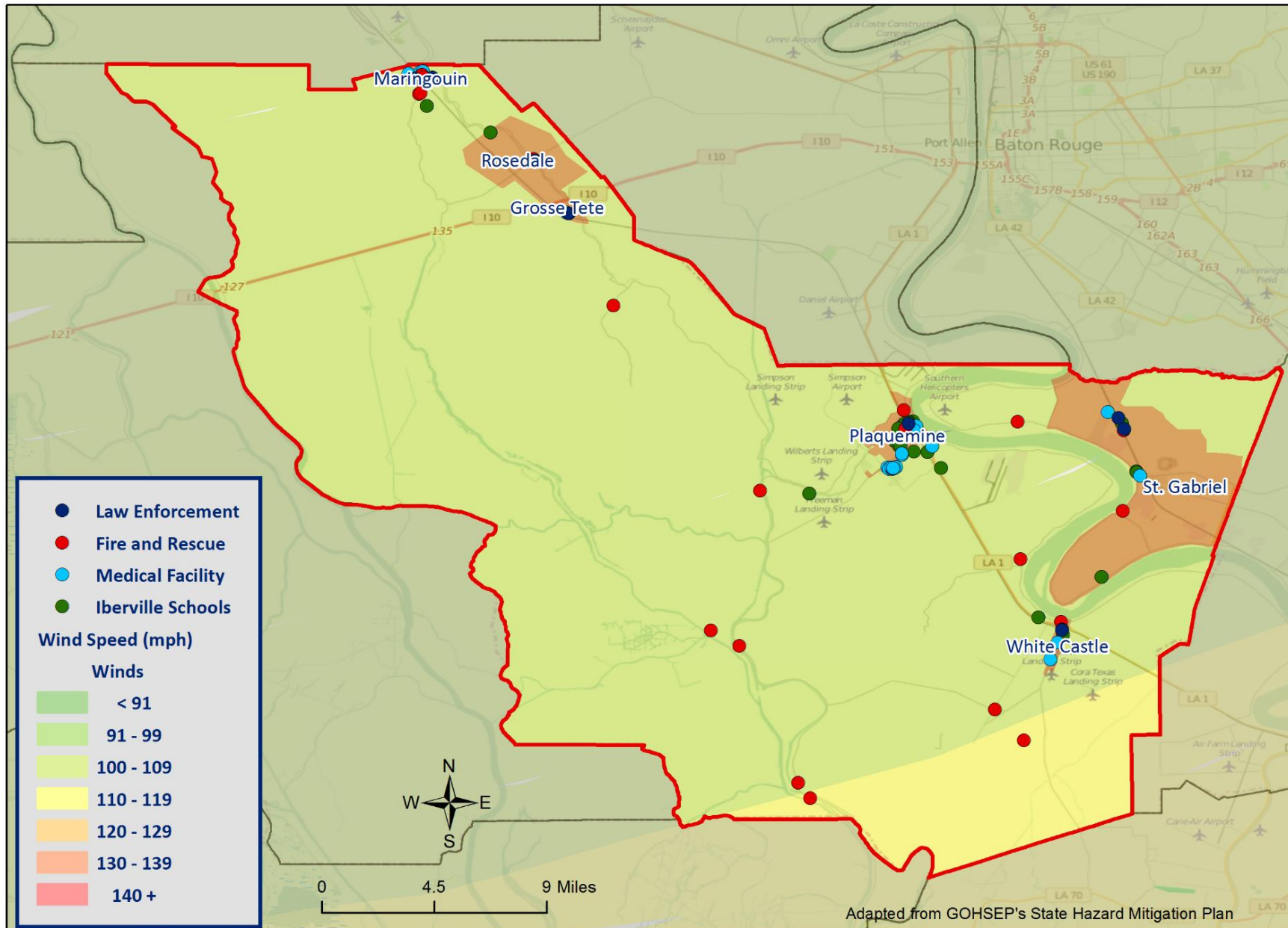
Wind Speed (Saffir-Simpson Scale)



Total Precipitation (inches)



Critical Facilities – Wind Speeds



Mitigation Strategy – Parish Goals

- **Goal 1:** Reduce flood losses within Iberville Parish
- **Goal 2:** Increase disaster resistance of Parish and municipal facilities and infrastructure
- **Goal 3:** Ensure that new construction is hazard resistant and does not lead to increased hazard risk or exacerbate effects of hazards
- **Goal 4:** Identify, introduce, and implement cost effective hazard mitigation measures so as to accomplish parish goals and objectives and to raise both awareness and acceptance of hazard mitigation generally

2009-2016 Parish HM Project Status

- Director's Comments

Public Outreach Activities

- Risk Analysis Activity (Hazard Occurrences)
- Problem Area Identification (Parish Maps)
- Survey

Contact Us

Brant Mitchell, SDMI Director of Research & Operations

bmitch9@lsu.edu

(225) 578-5939

Lauren Stevens, HM Project Lead

lstevens@lsu.edu

(225) 578-0502

Chris Rippetoe, HM Project Lead

crippe2@lsu.edu

Tiffany Coffman, HM Project Lead

tcoffman@lsu.edu

(225) 578-7034

Stephenson Disaster Management Institute

www.sdmi.lsu.edu



