



LaSalle Parish Hazard Mitigation Plan Update

April 28, 2021

Jena, LA



Introductions

- LaSalle OHSEP and Parish Officials
- Mitigation Steering Committee Members (Roll Call by Parish)
- SDMI
- GOHSEP

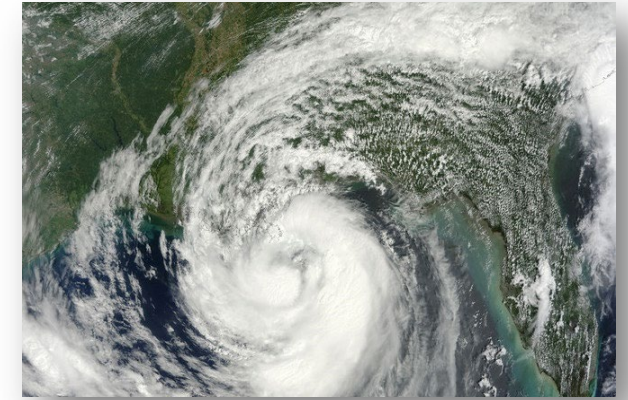


Who is SDMI?

- Stephenson Disaster Management Institute (SDMI) at Louisiana State University
- Non-Academic, Applied Research Unit on campus under the SNCSRT umbrella.
- Founded by Toni and Emmet Stephenson



LSU | Stephenson Disaster
Management Institute



The Hazard Mitigation Plan: What is in it for us?



Hazard Mitigation Is.....

- Any action taken to reduce long term risk to life and property;
- On-going process that occurs before, during, and after disasters;
- Mitigation actions help prevent damage to a community's infrastructure, economic, cultural and environmental assets;
- Minimize operational downtime and accelerate recovery of government and the private sector after an event;
- Implementation of mitigation actions leads to building stronger, safer and smarter!





Hazard Mitigation Planning is a process that identifies natural hazard risks and develops strategies to reduce these risks.



Planning Process

Hazard Mitigation Plan Update Requirements

- The plan must be updated every 5 years
- Re-assess hazard identification and risk assessment
 - Consider any changes since the last plan update, and address events that have occurred since the last plan;
- Incorporate local planning efforts;
- Report mitigation strategy (projects) progress and discuss adjustments;
- Address any weaknesses identified in the previous plan review.
- Must be multijurisdictional



Federal Requirements

- Disaster Mitigation Act of 2000 (DMA 2000)
 - Section 322 of the Act specifically addresses mitigation planning and requires state and local governments to prepare multi-hazard migration plans as a precondition for receiving FEMA mitigation project grants.
- Title 44 Code of Federal Regulations (CFR) §201.6 for FEMA approval and eligibility to apply for FEMA Hazard Mitigation Assistance



Expectations of the Planning Committee

- Parish will serve as the main liaison/POC throughout the planning process
- Each jurisdiction **MUST** show active participation in the planning process by the following:
 - Completing state required worksheets;
 - Identifying and updating jurisdiction specific mitigation actions (projects);
 - Have representation at meetings;
 - Report to community and gather feedback from appropriate agencies;
 - Adopt the final plan.



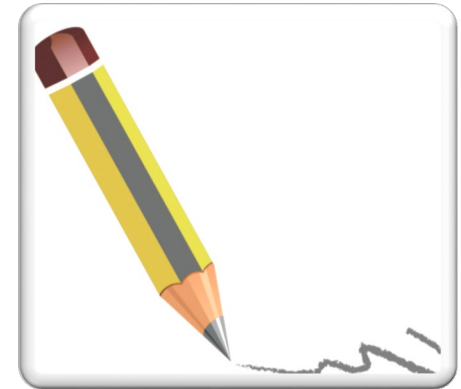


LASALLE

**PARISH HAZARD MITIGATION
UPDATE – 2016**



Plan Development



Plan Layout

- Section 1: Introduction
 - Updated demographics
 - Economics
 - Update parish/jurisdiction descriptions
- Section 2: Hazard Identification and Parish-wide Risk Assessment
- Section 3: **Capability Assessment**
- Section 4: **Mitigation Strategies**
 - **New actions**
 - **Action updates**
 - Survey results



**Stephenson Disaster
Management Institute**

Plan Layout

- Appendix A: Planning Process
- Appendix B: Plan Maintenance
- Appendix C: Parish Essential Facilities
- Appendix D: Plan Adoption
- Appendix E: State Required Worksheets



Section 1: Introduction

- Updated demographics
 - Census information
- Economic update
 - New facilities or companies that are leading to economic impact to the parish?
- Parish/Jurisdiction descriptive updates



Section 2: Hazard Identification and Risk Assessment

- Based on currently profiled risks
- Any newly identified risks
- Prevalent Hazards
- Previous occurrences
- Probability of future events
- Assets Inventory
- Essential Facilities
- Hazard Impact
- Future Development
- Future Hazard Impacts
- Zoning and Land Use
- Hazard Profiles



Section 2: Hazard Identification and Risk Assessment (Previous Update)

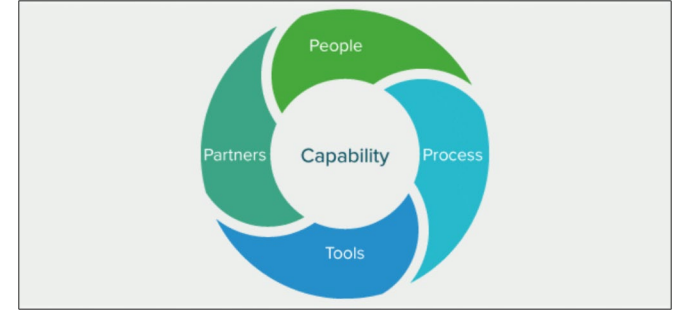
- Flooding
- Wildfires
- Tropical Cyclones
- Tornadoes
- Thunderstorms
- Winter Storms
- Drought



Section 3: Capabilities Assessment

Primary types of capabilities for reducing long-term vulnerability through mitigation planning are:

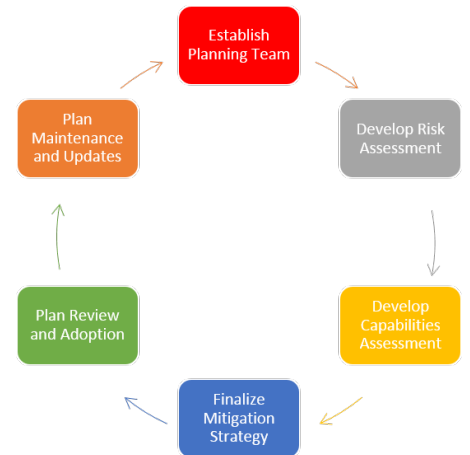
- Planning and regulatory
- Administrative and technical
- Financial
- Educational and outreach



Section 4: Mitigation Strategy

Goals

- Identify and pursue preventative measures that will reduce future damages from hazards
- Enhance public awareness and understanding of disaster preparedness
- Reduce repetitive flood losses in the parish and its municipalities
- Facilitate sound development in the parish and its municipalities so as to reduce or eliminate the potential impact of hazards



Section 4: Mitigation Action Update and New Mitigation Actions

- Mitigation Action Update on old actions/projects
- New Mitigation Actions Identification for 2021 Update for each jurisdiction



**** We will discuss Mitigation Actions with the steering committee at a later date.**

Mitigation Action Update		
Jurisdiction-Specific Action	Jurisdiction	Status
Construction of emergency shelters	LaSalle Unincorporated	Completed (one shelter)
Future development building standards improvements; Improve building standards by adopting the current International Building Codes by ordinance, which would result in additional techniques to harden structures.	LaSalle Unincorporated	Completed
Develop a master drainage plan which will evaluate drainage projects at major drainage laterals to determine best method of increasing drainage capacity. Implement recommended projects resulting from drainage plan; Improve drainage by adding new drainage pumps, enlarging culverts, replacing/improving any substandard bridges, and other drainage projects where necessary.	LaSalle Unincorporated, Town of Olla, Town of Urania	Ongoing
Implement mitigation measures that will alleviate road erosion within the parish.	LaSalle Unincorporated	Ongoing

Appendix A: Planning Process

- Overview of planning process
- Meeting documentation and summaries
- Discussion of integration of neighboring community participation
- Discussion of integration of other parish and jurisdiction plans to the HM Update
- Steering committee members identified

Appendix B: Plan Maintenance

- Review of HM plan **annual** maintenance by the LaSalle Parish OHSEP Director.
- Assign responsible parties for review and edits of the plan



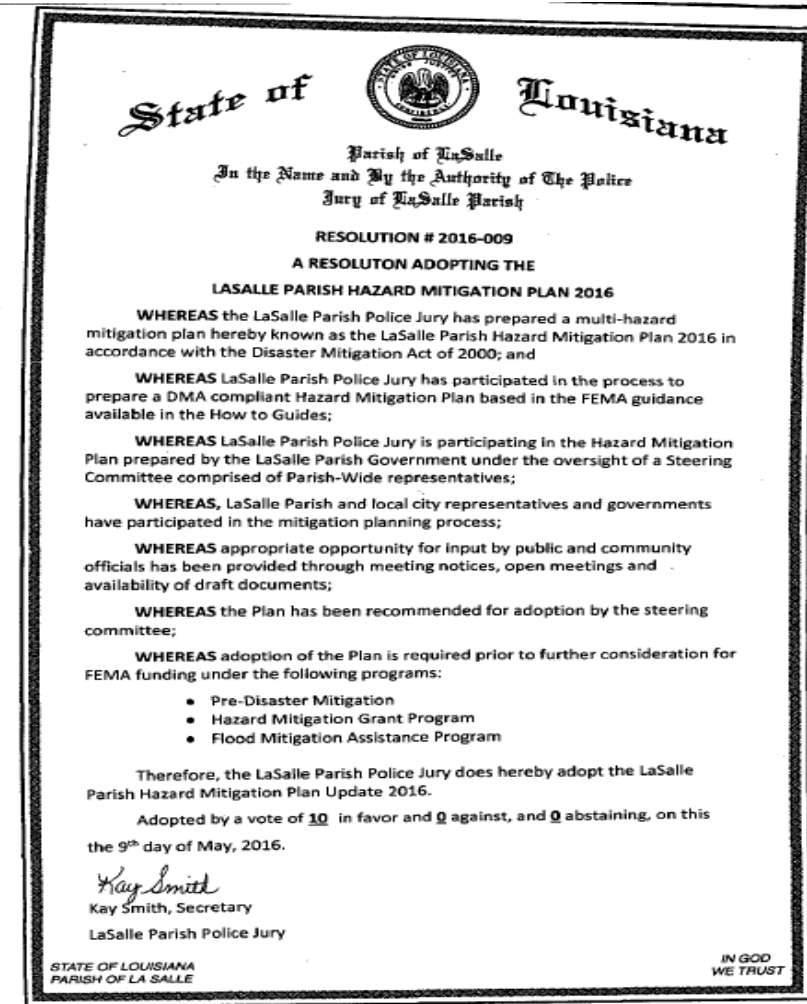
Appendix C: Essential Facilities

- Updated list of essential facilities by jurisdiction
- Will identify which hazards within the risk assessment pose a threat to each facility
- Facilities must be parish or city owned



Appendix D: Plan Adoption

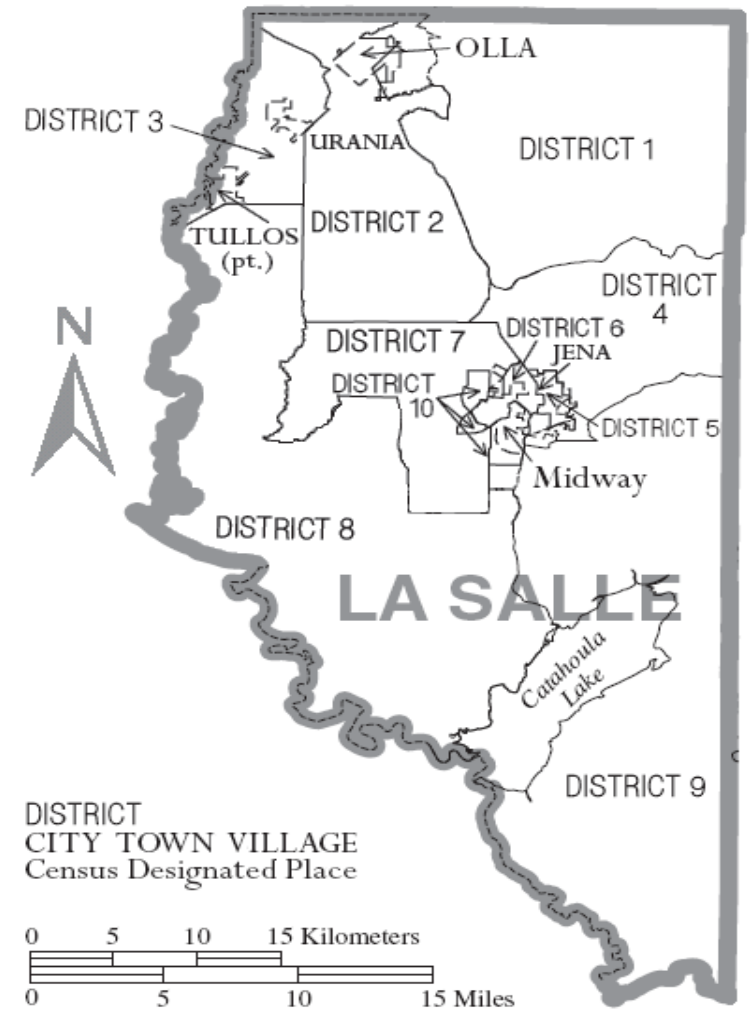
- Parish council and city council resolutions must be adopted, signed, and placed into the final planning document – **AFTER the plan is issued APA.**
- Templates can be provided if needed
- As a planning team member, be aware of the policies for your jurisdiction



Appendix E: State Required Worksheets

Each jurisdiction **MUST** fill these out:

- Capability Assessment
- NFIP Worksheet
- Critical Facilities/Building Inventory
- Vulnerable Population



Appendix E: State Required Worksheet – Capability Assessment

Worksheet 4.1: Capability Assessment Worksheet - LaSalle		
Local mitigation capabilities are existing authorities, policies and resources that reduce hazard impacts or that could be used to implement hazard mitigation activities. Please complete the tables and questions in the worksheet as completely as possible.		
Planning and Regulatory		
Please indicate which of the following plans and regulatory capabilities your jurisdiction has in place.		
Plans	Yes / No	Comments
Comprehensive / Master Plan		
Capital Improvements Plan		
Economic Development Plan		
Local Emergency Operations Plan		
Continuity of Operations Plan		
Transportation Plan		
Stormwater Management Plan		
Community Wildfire Protection Plan		
Other plans (redevelopment, recovery, coastal zone management)		
Building Code, Permitting and Inspections	Yes / No	
Building Code		
Building Code Effectiveness Grading Schedule (BCEGS) Score		
Fire Department ISO/PIAL rating		
Site plan review requirements		
Land Use Planning and Ordinances	Yes / No	
Zoning Ordinance		
Subdivision Ordinance		
Floodplain Ordinance		
Natural Hazard Specific Ordinance (stormwater, steep slope, wildfire)		
Flood Insurance Rate Maps		
Acquisition of land for open space and public recreation uses		
Other		
Administration and Technical		

Place answers in Yes/No column, add comments if necessary (i.e. what year the plan was updated last)



Appendix E: State Required Worksheets – Building Inventory

[illegible]

Appendix E: State Required Worksheets – Critical Facilities and Vulnerable Populations

Vulnerable Populations Worksheet

LaSalle Parish

Name	Street	City	Zip Code	Latitude	Longitude
All Hospitals (Private or Public)					
LaSalle General Hospital	187 Nine Street	Jena	71342	31.6933	-92.1576
* There are no Hospitals located in the Town of XXXX					
Nursing Homes (Private or Public)					
* There are no Nursing Homes located in the Town of XXXX					

Plan Update Worksheet – NFIP

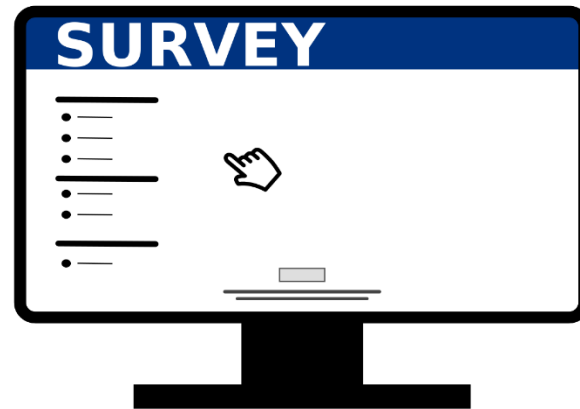
ELEMENT F: STATE REQUIREMENT		
National Flood Insurance Program (NFIP)		
Parish: LaSalle		
Insurance Summary		Comments
How many NFIP policies are in the community?		
What is the total premium and coverage?		
How many claims have been paid in the community? What is the total amount of paid claims? How many of the claims were for substantial damage?		
How many structures are exposed to flood risk with in the community?		
Describe any areas of flood risk with limited NFIP policy coverage.		
Staff Resources		
Is the Community FPA or NFIP Coordinator certified?		
Is flood plain management an auxiliary function?		
Provide an explanation of NFIP administration services (e.g., permit review, GIS, education or outreach, inspections, engineering capability)		
What are the barriers to running an effective NFIP program in the community, if any?		
Compliance History		
Is the community in good standing with the NFIP?		
Are there any outstanding compliance issues(i.e., current violations)?		
When was the most recent Community Assistance Visit (CAV) or Community Assistance Contact(CAC)?		
Is a CAV or CAC scheduled or needed? If so when?		

- FEMA can provide this information, or local /parish floodplain managers

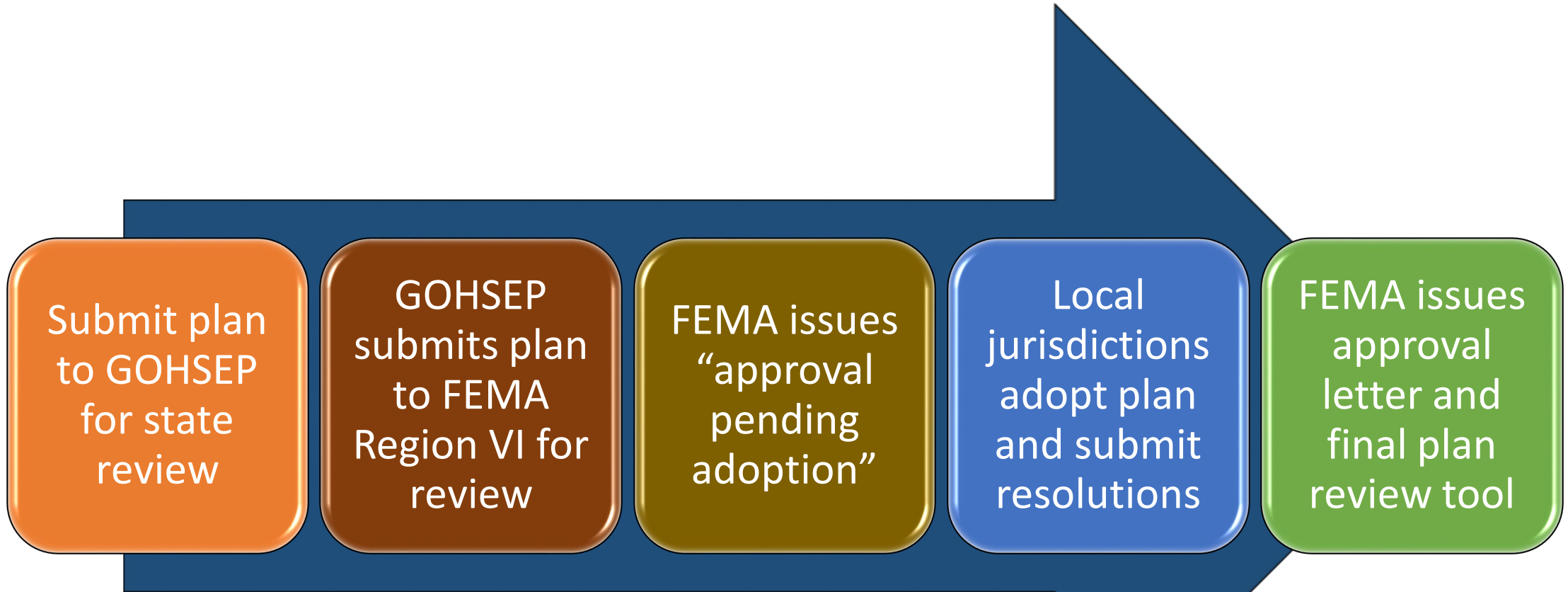


Parish Mitigation Survey

- Collects information from citizens regarding their perceptions of local hazards and mitigation efforts
- Results will be included in the plan if there are enough responses
- <https://www.surveymonkey.com/r/LaSalleHM2021>



Plan Approval Process



The plan will be subject to revisions as it moves through the review process.

The Final Product

- FEMA approved Hazard Mitigation Plan
 - Meets requirements of Title 44 Code of Regulations (CFR) §201.6 for approval and eligibility to apply for FEMA Hazard Mitigation Assistance grant programs.
 - A hazard mitigation project strategy for each jurisdiction
 - A comprehensive list of jurisdiction owned properties
 - Assessment of natural disaster-related risks and vulnerabilities



Next Steps

- Worksheet and Mitigation Actions due dates
- Identify Neighboring Community
- Next meetings?
 - Mitigation Action Workshop (Optional)
 - Risk Assessment Review with Committee
 - Public Meeting
- Draft Plan to FEMA
 - 1-2 weeks after the public meeting
- Adoptions
 - AFTER the FEMA Review!!!



Contact Us

Brant Mitchell, SDMI Director, CEM, CISSP

Lauren Stevens, Associate Director, MEPP

- lstevens@lsu.edu
- (225) 578-0502

Chris Rippetoe, HM Project Manager, CFM

- crippe2@lsu.edu
- (225) 578-6667

Anna Daigle, Emergency Management Specialist

- adaig35@lsu.edu

