



St Bernard Parish Hazard Mitigation Plan Update Kick-off Meeting

January 15, 2020

Chalmette, LA



Introductions

- Officials
- Mitigation Steering Committee members
- SDMI team members
- GOHSEP hazard mitigation team

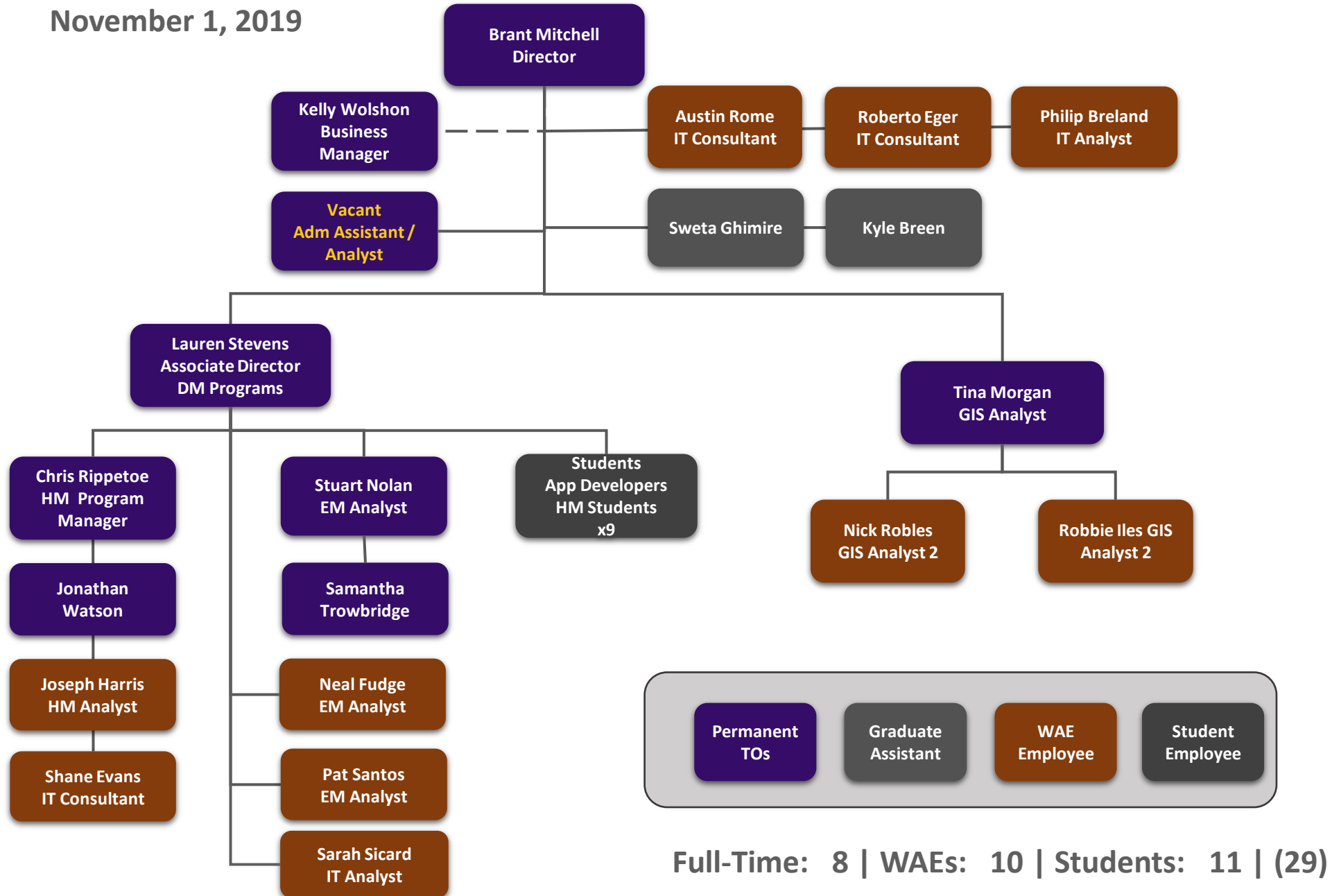


Who is SDMI?

- Stephenson Disaster Management Institute (SDMI) at Louisiana State University
- Non Academic, Applied Research Unit on campus under the SNCSRT umbrella.
- Founded by Toni and Emmet Stephenson



Org Chart
November 1, 2019





The Hazard Mitigation Plan: What is in it for us?



Hazard Mitigation Is.....

- Protect public safety and prevent loss of life and injury;
- Help accomplish community objectives, such as leveraging capital improvements, infrastructure protection, open space preservation, and economic resiliency;
- Prevent damage to a community's economic, cultural and environmental assets;
- Minimize operational downtime and accelerate recovery of government and the private sector after an event;
- Meet requirements of Title 44 Code of Regulations (CFR) §201.6 for approval and eligibility to apply for FEMA Hazard Mitigation Assistance grant programs.





Hazard Mitigation Planning is a process that identifies natural hazard risks and develops strategies to reduce these risks.



Planning Process



Hazard Mitigation Plan Update Requirements

- The plan must be updated every five (5) years;
- Re-assess hazard identification and risk assessment
 - Consider any changes since the last plan update, and address events that have occurred since the last plan;
- Incorporate local planning efforts;
- Report mitigation strategy (projects) progress and discuss adjustments;
- Address any weaknesses identified in the previous plan review.



The Planning Team: A Multi-jurisdictional Approach

- Each jurisdiction will have at least one representative on the planning team.
- This representative will need to report back to their community on a regular basis, as well as gather feedback and input into the plan.
- Each jurisdiction is responsible for gathering NFIP, Capability Assessment, Critical Facilities and vulnerable population data for the plan.
- Each jurisdiction is responsible for updating mitigation actions and proposing new actions for the update.



Federal Requirements

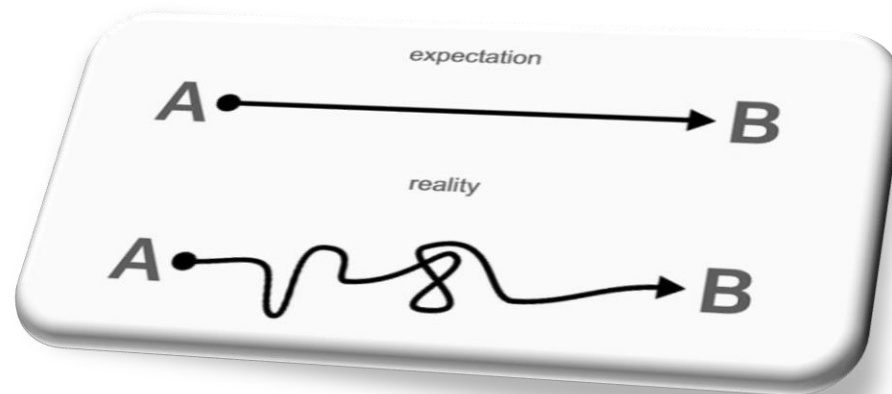
- Disaster Mitigation Act of 2000 (DMA 2000)
 - Section 322 of the Act specifically addresses mitigation planning and requires state and local governments to prepare multi-hazard migration plans as a precondition for receiving FEMA mitigation project grants.
- Title 44 Code of Federal Regulations (CFR) §201.6 for FEMA approval and eligibility to apply for FEMA Hazard Mitigation Assistance



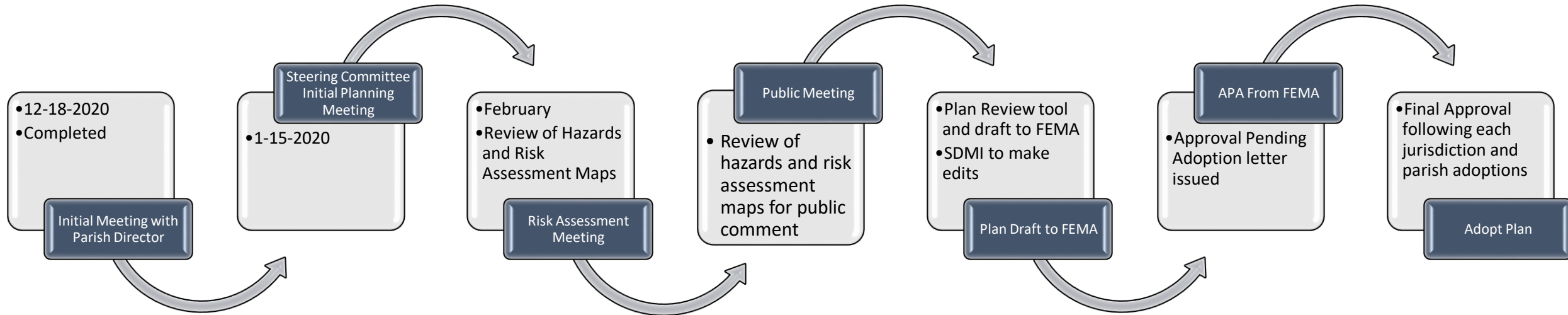
Expectations

Jurisdictions

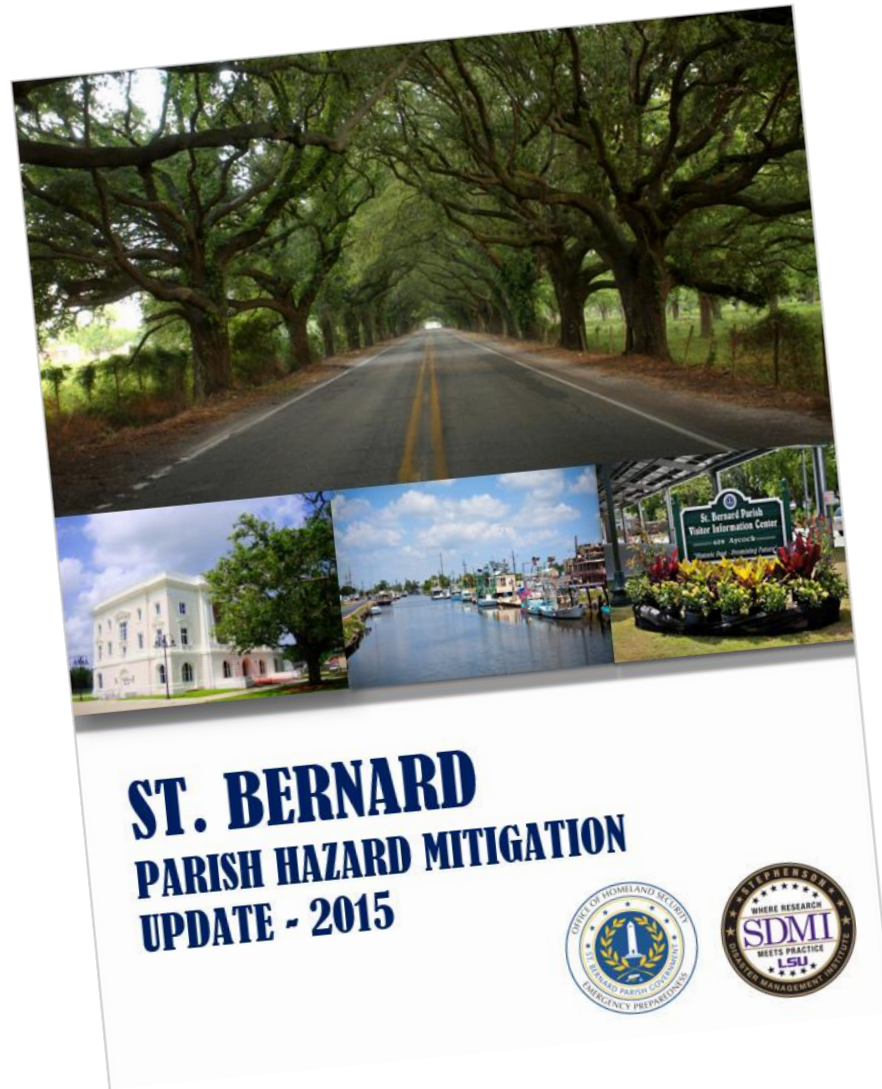
- Each jurisdiction **MUST** show active participation in the planning process by the following:
 - Completing state required worksheets;
 - Identifying jurisdiction specific mitigation actions (projects);
 - Have representation at all meetings;
 - Adopt the final plan.



Plan Update Timeline – Next Steps



Planning Development



Plan Layout

- Section 1: Introduction
 - Updated demographics
 - Economics
 - Update parish/jurisdiction descriptions
- Section 2: Hazard Identification and Parishwide Risk Assessment
- Section 3: Capability Assessment
- Section 4: Mitigation Strategies
 - New actions
 - Action updates
 - Survey results



Plan Layout

- Appendix A: Planning Process
- Appendix B: Plan Maintenance
- Appendix C: Parish Essential Facilities
- Appendix D: Plan Adoption
- Appendix E: State Required Worksheets
- **Appendix F: Community Rating System (CRS)**



Section 1: Introduction

- Updated demographics
 - Census information
- Economic update
 - New facilities or companies that are leading to economic impact to the parish?
- Parish/Jurisdiction descriptive updates



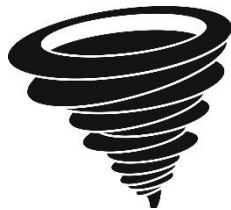
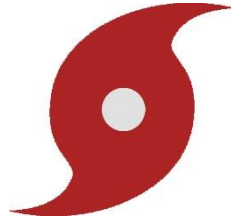
Section 2: Hazard Identification and Risk Assessment

- Based on currently profiled risks
- Any newly identified risks
- Prevalent Hazards
- Previous occurrences
- Probability of future events
- Assets Inventory
- Essential Facilities
- Hazard Impact
- Future Development
- Future Hazard Impacts
- Zoning and Land Use
- Hazard Profiles



Section 2: Hazard Identification and Risk Assessment (Previous Update)

- Hurricanes
- Flooding
- Storm Surge
- Thunderstorms/Lightning/High wind
- Tornadoes



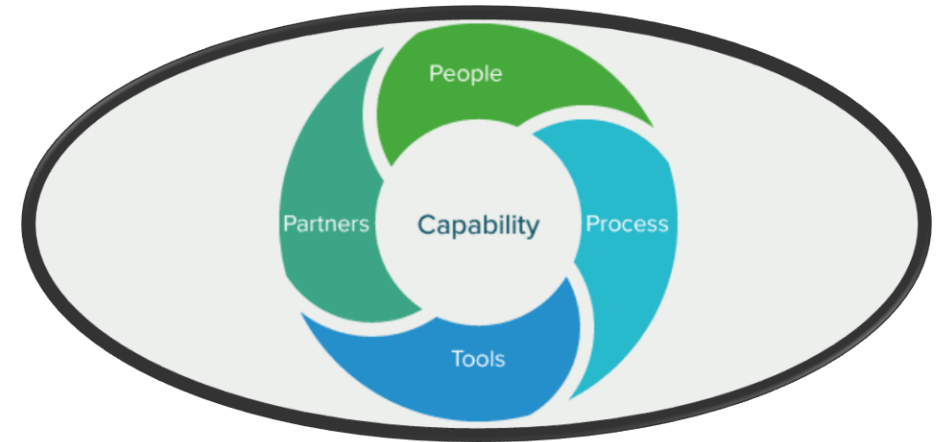
- Land Subsidence
- Salt Water Intrusion
- Hailstorms
- Wildfires



Section 3: Capabilities Assessment

Primary types of capabilities for reducing long-term vulnerability through mitigation planning are:

- Planning and regulatory
- Administrative and technical
- Financial
- Educational and outreach



Section 4: Mitigation Strategy

Goals

- Identify and pursue preventative measures that will reduce future damages from hazards;
- Enhance public awareness and understanding of disaster preparedness;
- Reduce repetitive flood losses in the Parish;
- Facilitate sound development and rebuilding in the Parish so as to reduce or eliminate the potential impacts of hazards



Mitigation Action Update and New Mitigation Actions

- Mitigation Action Update on old actions/projects
- New Mitigation Actions Identification for 2020 Update for each jurisdiction
- Is a mitigation action workshop needed?



**** We will discuss Mitigation Actions with the steering committee at a later date.**

Mitigation Actions for City of Covington							
Action	Summary	Funding Source	Target Completion Date	Responsible Party, Agency, or Department	Hazard	Goal	Status
Action 1.1: Mile Branch Drainage Improvements	The proposed project involves stabilization of existing channel banks due to damage from erosion of existing banks. The purpose of the project is to reduce potential structure damage due to erosion along the channel.	Local, FEMA HMPG	24 months from start	City of Covington/St Tammany Parish	Flooding, Tropical Cyclone	1,4	New
Action 1.2: Simpson Creek Drainage Improvements	The proposed project involves increase flow capacities in major drainage channel to mitigate flood risk to area. Simpson Creek drains a large developed portion of the City of Covington. Improvements would be made to reduce flood risk to structures located along the drainage way.	Local, FEMA HMPG	18 months from start	City of Covington	Flooding, Tropical Cyclone, Severe Thunderstorm	1,2,3,4,7	New

Section 4: Project Updates

- Harden/Retrofit new and existing Public Buildings – In Progress
- Harden/Retrofit new and existing critical infrastructure – In Progress
- Floodproof existing and new public buildings – Not Started
- Floodproof existing and new critical infrastructure – Not Started
- Drainage upgrade projects – In Progress
- Saltwater intrusion prevention – Not Started
- Pursue projects to increase CRS scores and protect homeowners – In Progress
- Pursue Elevation projects for RL structures – In Progress
- Pursue Acquisition Projects for RL structures - In Progress



Section 4: Project Updates

- Amend floodplain ordinance and adopt updated flood insurance rating maps for new structures upon FEMA release – In Progress
- Hazard Mitigation Outreach and Education – In Progress
- Construct Safe Rooms – Not Started
- Lightning protection projects – Not Started
- Upgrade culverts/provide floodgates – Completed
- Safe rooms in schools and public buildings – Completed
- Amend building code regs/Adopt updated uniform construction code – Completed
- Amend land zone use/zoning regs – Completed.



Mitigation Action Implementation Worksheet

Mitigation Action Implementation Worksheet

Complete a mitigation action implementation worksheet for each identified mitigation action.

Jurisdiction:	
Mitigation Action/Project Title:	
Background/Issue:	
Ideas for Integration:	
Responsible Agency:	
Partners:	
Potential Funding:	
Cost Estimate:	
Benefits: (Losses Avoided)	
Timeline:	
Priority:	
Worksheet Completed by:	(Name/Department)

Appendix A: Planning Process

- Overview of planning process
- Meeting documentation and summaries
- Discussion of integration of neighboring community participation
- Discussion of integration of other parish and jurisdiction plans to the HM Update
- Steering committee members identified

Appendix B: Plan Maintenance

- Review of HM plan annual or bi annual maintenance
- Assign responsible parties for review and edits of the plan



Appendix C: Essential Facilities

- Updated list of essential facilities by jurisdiction
- Will identify which hazards within the risk assessment pose a threat to each facility
- Facilities must be parish or city owned



Appendix D: Plan Adoption

- Parish council and city council resolutions must be adopted, signed, and placed into the final planning document



Guy McInnis
Councilman
at Large

George Cavignac
Councilman
at Large

Ray Lauga, Jr.
Councilman
District A

Nathan Gorbaty
Councilman
District B

Richard "Richie" Lewis
Councilman
District C

Casey W. Hunnicutt
Councilman
District D

Manuel "Monty"
Montelongo III
Councilman
District E

Roxanne Adams
Clerk of Council

St. Bernard Parish Council

8201 West Judge Perez Drive Chalmette, Louisiana, 70043
(504) 278-4228 Fax (504) 278-4209
www.sbgp.net

Page -2-
Extract #13 continued
November 4, 2015

The above and foregoing having been submitted to a vote, the vote thereupon resulted as follows:

YEAS: Lauga, Lewis, Montelongo

NAYS: None

ABSENT: Gorbaty, McInnis, Cavignac

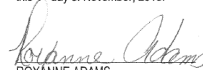
The Chairman, Mr. Hunnicutt, cast his vote as YEA.

And the motion was declared adopted on the 4th day of November, 2015.

CERTIFICATE

I HEREBY CERTIFY that the above and foregoing is a true and correct copy of a motion adopted at a Regular Meeting of the Council of the Parish of St. Bernard, held at Chalmette, Louisiana, on Wednesday, November 4, 2015.

Witness my hand and the seal
of the Parish of St. Bernard on
this 4th day of November, 2015.


ROXANNE ADAMS
CLERK OF COUNCIL



Appendix E: State Required Worksheets

Each jurisdiction **MUST** fill these out:

- Capability Assessment
- NFIP Worksheet
- Critical Facilities/Building Inventory
- Vulnerable Population



Element E: State Required Worksheet – Capability Assessment

Worksheet 4.1: Capability Assessment Worksheet - Unincorporated Calcasieu		
Local mitigation capabilities are existing authorities, polices and resources that reduce hazard impacts or that could be used to implement hazard mitigation activities. Please complete the tables and questions in the worksheet as completely as possible.		
Planning and Regulatory		
Please indicate which of the following plans and regulatory capabilities your jurisdiction has in place.		
Plans	Yes / No	Comments
Comprehensive / Master Plan		
Capital Improvements Plan		
Economic Development Plan		
Local Emergency Operations Plan		
Continuity of Operations Plan		
Transportation Plan		
Stormwater Management Plan		
Community Wildfire Protection Plan		
Other plans (redevelopment, recovery, coastal zone management)		
Building Code, Permitting and Inspections	Yes / No	
Building Code		
Building Code Effectiveness Grading Schedule (BCEGS) Score		
Fire Department ISO/PIAL rating		
Site plan review requirements		
Land Use Planning and Ordinances	Yes / No	
Zoning Ordinance		
Subdivision Ordinance		
Floodplain Ordinance		
Natural Hazard Specific Ordinance (stormwater, steep slope, wildfire)		
Flood Insurance Rate Maps		
Acquisition of land for open space and public recreation uses		
Other		
Administration and Technical		

Place answers in Yes/No column, add comments if necessary (i.e. what year the plan was updated last)

Worksheet 4.1: Capability Assessment Worksheet								
Local mitigation capabilities are existing authorities, polices and resources that reduce hazard impacts or that could be used to implement hazard mitigation activities. Please complete the tables and questions in the worksheet as completely as possible.								
Planning and Regulatory								
Please indicate which of the following plans and regulatory capabilities your jurisdiction has in place.								
	Calcasieu Parish	DeQuincy	Lake Charles	Sulphur	Westlake	Vinton	Iowa	
Plans	Yes / No							
Comprehensive / Master Plan								
Capital Improvements Plan								
Economic Development Plan								
Local Emergency Operations Plan								
Continuity of Operations Plan								
Transportation Plan								
Stormwater Management Plan								
Community Wildfire Protection Plan								
Other plans (redevelopment, recovery, coastal zone management)								
Building Code, Permitting and Inspections	Yes / No							
Building Code								
Building Code Effectiveness Grading Schedule (BCEGS) Score								
Fire Department ISO/PIAL rating								
Site plan review requirements								
Land Use Planning and Ordinances	Yes / No							
Zoning Ordinance								
Subdivision Ordinance								
Floodplain Ordinance								
Natural Hazard Specific Ordinance (stormwater, steep slope, wildfire)								
Flood Insurance Rate Maps								
Acquisition of land for open space and public recreation uses								
Other								

[illegible]

- List all parish/government owned building; indicate in the first column if it is a critical facility
- Assessed value, date built, and construction type MUST be filled out

Appendix E: State Required Worksheets – Critical Facilities and Vulnerable Populations

[illegible]

Plan Update Worksheet – NFIP

ELEMENT F: STATE REQUIREMENT		
National Flood Insurance Program (NFIP)		
Parish: Calcasieu Parish		
Insurance Summary		Comments
How many NFIP policies are in the community?		
What is the total premium and coverage?		
How many claims have been paid in the community? What is the total amount of paid claims? How many of the claims were for substantial damage?		
How many structures are exposed to flood risk with in the community?		
Describe any areas of flood risk with limited NFIP policy coverage.		
Staff Resources		
Is the Community FPA or NFIP Coordinator certified?		
Is flood plain management an auxiliary function?		
Provide an explanation of NFIP administration services (e.g., permit review, GIS, education or outreach, inspections, engineering capability)		
What are the barriers to running an effective NFIP program in the community, if any?		
Compliance History		
Is the community in good standing with the NFIP?		
Are there any outstanding compliance issues(i.e., current violations)?		
When was the most recent Community Assistance Visit (CAV) or Community Assistance Contact(CAC)?		
Is a CAV or CAC scheduled or needed? If so when?		

- FEMA can provide this information, or local /parish floodplain managers



Appendix F: Community Rating System

- Only applies to CRS communities
- This appendix must be entirely provided by the parish



OMB No. 1660-0022
Expires: March 31, 2020

National Flood Insurance Program
Community Rating System

Coordinator's Manual

FLA-15/2017



FEMA

Community Rating System

- The goal is to encourage communities and states to exceed the minimum standards of the NFIP by the use of flood insurance premium adjustments
- The objective is to reward communities that are exceeding the minimum standards



FEMA

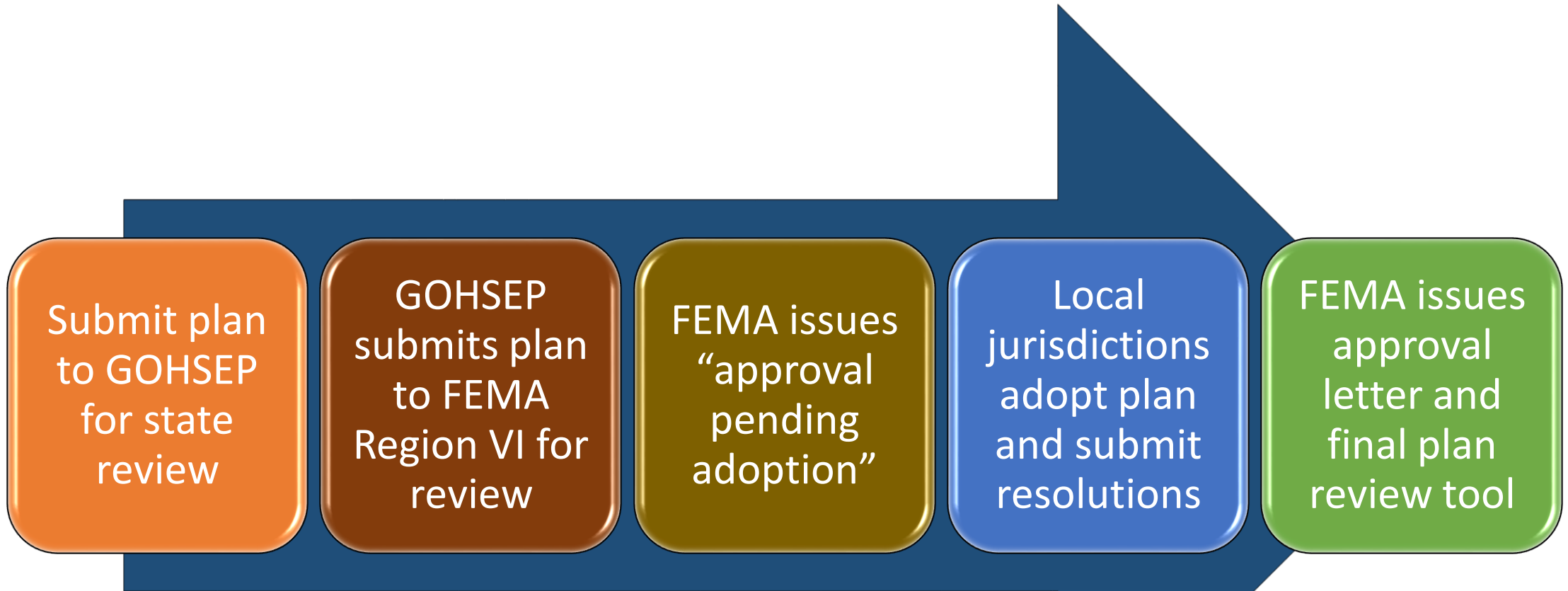
CRS Overview



LSU

**STEPHENSON DISASTER
MANAGEMENT INSTITUTE**
Stephenson National Center for
Security Research and Training

Plan Approval Process



The plan will be subject to revisions as it moves through the review process.

Plan Adoption

Each jurisdiction **MUST** adopt the final plan.

- Templates can be provided if needed
- As a planning team member be aware of the policies for your jurisdiction
 - Know the process for putting this plan on the docket for adoption
 - Make sure you make the required deadlines



The Final Product

- FEMA approved Hazard Mitigation Plan
 - Meets requirements of Title 44 Code of Regulations (CFR) §201.6 for approval and eligibility to apply for FEMA Hazard Mitigation Assistance grant programs.
 - A hazard mitigation project strategy for each jurisdiction
 - A comprehensive list of jurisdiction owned properties
 - Assessment of natural disaster-related risks and vulnerabilities



Contact Us

Brant Mitchell, SDMI Director, CEM

bmitch9@lsu.edu

(225) 578-5939

Lauren Stevens, Associate Director, MEPP

lstevens@lsu.edu

(225) 578-0502

Chris Rippetoe, HM Project Manager, CFM

crippe2@lsu.edu

(225) 578-6667

Stephenson Disaster Management Institute

www.sdmi.lsu.edu

