



# **Union Parish Hazard Mitigation Plan Update Initial Planning Meeting**



**HOMELAND SECURITY &  
EMERGENCY PREPAREDNESS**

June 22, 2023

Farmerville, LA

**LSU** | **Stephenson Disaster  
Management Institute**

# Introductions

- **Union Parish OHSEP Director/Planning Committee**
- **Stephenson Disaster Management Institute (SDMI) at LSU**
  - Chris Rippetoe – Hazard Mitigation Program Manager
  - Jason Martin – Emergency Management Analyst
- **Governor's Office of Homeland Security and Emergency Preparedness**
  - Jeffrey Giering – State Hazard Mitigation Officer
  - Marion Pearson – Hazard Mitigation Planner



# Who is SDMI?

- Stephenson Disaster Management Institute (SDMI) at Louisiana State University
- Non-Academic, Applied Research Unit on campus under the SNCSRT umbrella.
- Founded by Toni and Emmet Stephenson

**LSU** | Stephenson Disaster  
Management Institute



HOMELAND SECURITY &  
EMERGENCY PREPAREDNESS





# The Hazard Mitigation Plan: What is in it for us?



HOMELAND SECURITY &  
EMERGENCY PREPAREDNESS

# Hazard Mitigation Is...

- Any action taken to reduce long term risk to life and property;
- On-going process that occurs before, during, and after disasters;
- Mitigation actions help prevent damage to a community's infrastructure, economic, cultural and environmental assets;
- Minimize operational downtime and accelerate recovery of government and the private sector after an event;
- ***Implementation of mitigation actions leads to building stronger, safer and smarter!***





Hazard Mitigation Planning is a process that identifies natural hazard risks and develops strategies to reduce these risks.



# Planning Process



# Plan Update Requirements

- The plan must be updated every 5 years
- Re-assess hazard identification and risk assessment
  - Consider any changes since the last plan update, and address events that have occurred since the last plan;
- Incorporate local planning efforts;
- Report mitigation strategy (projects) progress and discuss adjustments;
- Must be multi-jurisdictional
  - Include academia, private business/industry, and non-profit groups as stakeholders



# Federal Requirements

## CODE OF FEDERAL REGULATIONS

44

Revised as of October 1, 2018

Emergency Management  
and  
Assistance

- Disaster Mitigation Act of 2000 (DMA 2000)
  - **Section 322** of the Act specifically addresses mitigation planning and requires state and local governments to prepare multi-hazard mitigation plans as a precondition for receiving FEMA mitigation project grants.
- Title 44 Code of Federal Regulations (CFR) §201.6 for FEMA approval and eligibility to apply for FEMA Hazard Mitigation Assistance



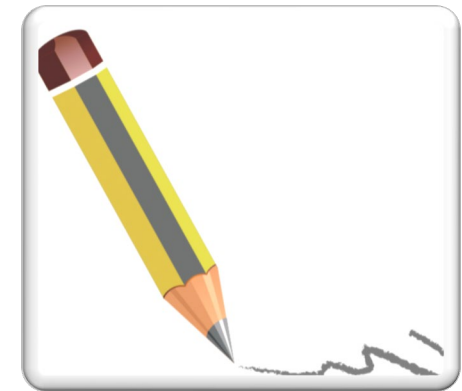
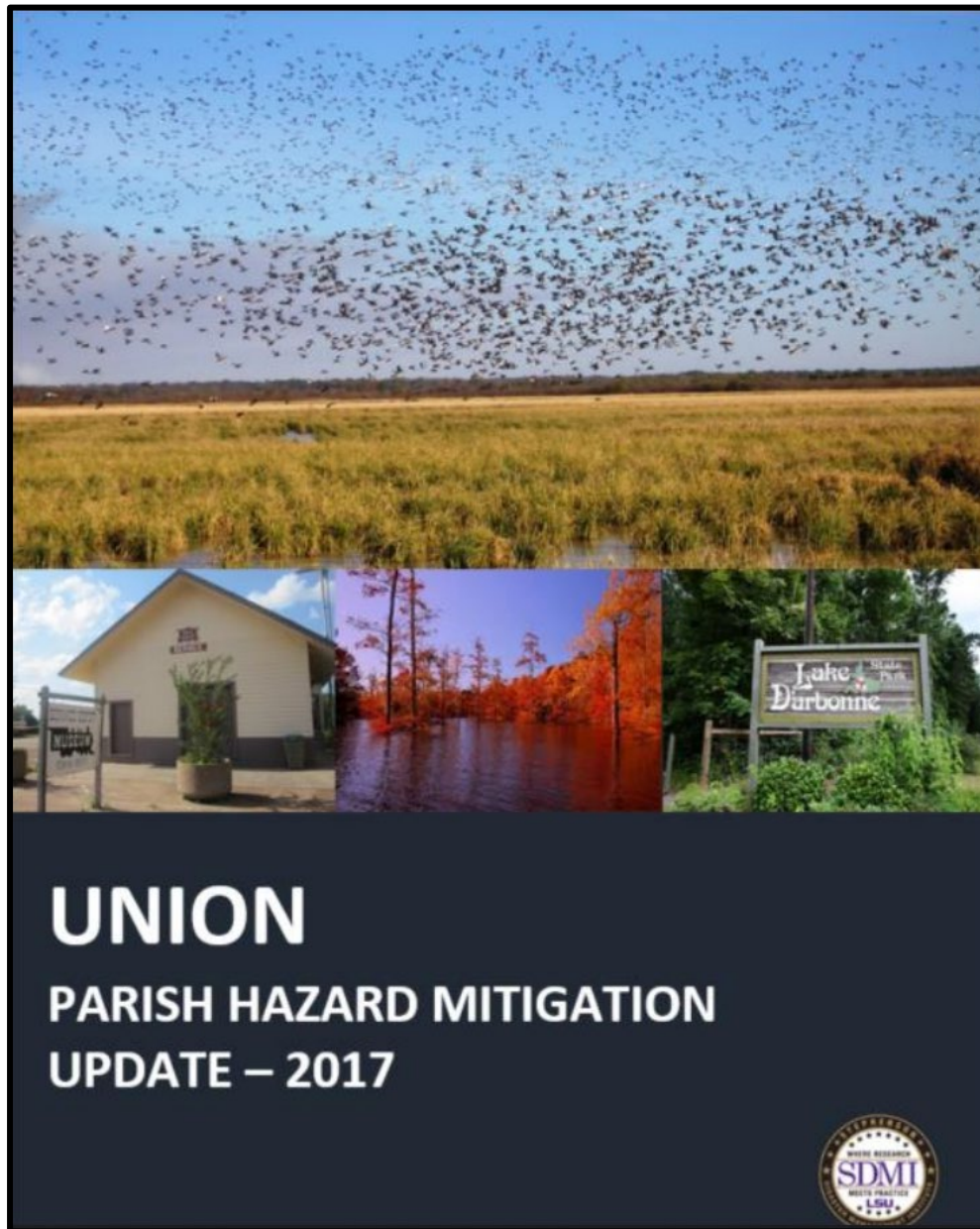


# Planning Committee Expectations

- Parish will serve as the main liaison/POC throughout the planning process
- Each jurisdiction **MUST** show active participation in the planning process by the following:
  - Completing state required worksheets;
  - Identifying and updating jurisdiction specific mitigation actions (projects);
  - Have representation at meetings;
  - Report to community and gather feedback from appropriate agencies;
  - Adopt the final plan.



# Plan Development



# Plan Layout

- **Section 1: Introduction**
  - Updated parish description
  - Updated demographics
  - Economics
- **Section 2: Hazard Identification and Parish-wide Risk Assessment**
- **Section 3: Capability Assessment**
- **Section 4: Mitigation Strategies**
  - Action updates
  - New actions
  - Survey results



# Plan Layout

- **Appendix A: Planning Process**
- **Appendix B: Plan Maintenance**
- **Appendix C: Parish Critical Facilities**
- **Appendix D: Plan Adoption**
- **Appendix E: State Required Worksheets**





# Section 1: Introduction

- Updated demographics
  - Census information
- Economic update
  - New facilities or companies that are leading to economic impact to the parish?
- Parish/Jurisdiction descriptive updates



# Section 2: Hazard Identification and Risk Assessment

- Previously Profiled Hazards
- Newly Identified Hazards
- Previous Occurrences
- Probability of Future Events
- Potential Losses due to an event
- Zoning and Land Use
- Impacts on Critical Facilities
- Impacts from future development
- Future impacts due to climate change



# Hazard Identification and Risk Assessment

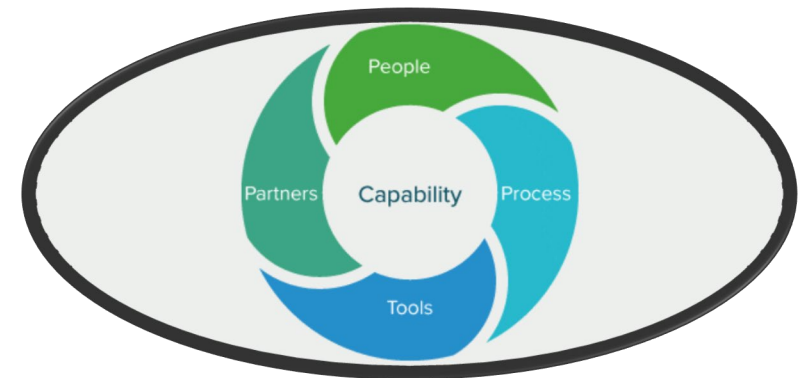
- Dam Failure
- Drought
- Excessive Heat
- Flooding
- Levee Failure
- Thunderstorms
- Tornadoes
- Tropical Cyclones
- Wildfires
- Winter Weather



# Section 3: Capability Assessment

**Primary types of capabilities for reducing long-term vulnerability through mitigation planning are:**

- Planning and Regulatory
- Administrative and Technical
- Financial
- Educational and Outreach





# Section 4: Mitigation Strategies

## Goals

- Improve education and outreach efforts, specifically to the public, parish/municipal employees, and local business, regarding potential impacts of hazards and the identification of specific measures that can be taken to reduce their impact
- Improve data collection, use, and sharing, specifically with neighboring communities, among municipalities, and with the State, to reduce the impact of hazards
- Improve capabilities, coordination, and opportunities at municipal and parish levels to plan and implement hazard mitigation project, programs, and activities, especially through the use of GIS, coordination with universities, and public/private partnerships
- Pursue opportunities to mitigate repetitive and severe repetitive loss properties and other appropriate hazard mitigation projects, programs, and activities, with a focus on existing structures, future structures, protection of existing infrastructure, and protection of future infrastructure



# Section 4: Mitigation Strategies

- Mitigation Action Update on old actions/projects
- New Mitigation Actions Identification for 2023 Update for each jurisdiction



**\*\* We will discuss Mitigation Actions with the planning committee at a later date.**

Unincorporated Union Parish Mitigation Action Sheet						
Jurisdiction-Specific Action	Action Description	Funding Source	Target Completion Date	Responsible Party, Agency, or Department	Hazard	Status
UN1: Building Retrofits	Retrofit public buildings exterior shell to maintain use during and after storm events. Benefits: Reduces damage from high winds, and helps assure that the public buildings can be used, occupied and operable during or after storms.	HGMP, BRIC, Local	1-5 years	Union Parish Police Jury/Union Parish OHSEP	Flooding, Thunderstorms, Tornadoes, Tropical Cyclones, Wildfires, Winter Weather	
UN2: Drainage Improvement	Will relieve flooding problems, reduce flood damage and costs of damage, overtopping of roads with drain water, while also keeping open roadways during periods of high precipitation. Benefits: Relieves Parish or local government and property owners of the continual flooding problems, with closed roadways (loss of function). Saves public funds for road repairs, drainage ditch repairs, sandbagging and blocking of roadways during storm periods.	HGMP, BRIC, FMA, Local	1-5 years	Union Parish Police Jury/Union Parish OHSEP	Flooding, Tropical Cyclones	
UN3: Mitigation of repetitive loss and severe repetitive loss properties and other hazard prone structures	Elevation, acquisition-demolition, acquisition-relocations, and reconstruction of repetitive loss or flooding or other hazard prone properties.	HGMP, BRIC, FMA, Local	1-5 years	Union Parish Police Jury/Union Parish OHSEP	Flooding, Tropical Cyclones	
UN4: Safe Room Projects	Construction of a safe room for first responders located in Union Parish. Other locations will be identified based on funding availability.	HGMP, BRIC, Local	1-5 years	Union Parish Police Jury/Union Parish OHSEP	Flooding, Thunderstorms, Tornadoes, Tropical Cyclones, Wildfires, Winter Weather	

# Appendix A: Planning Process

- Overview of planning process
- Meeting documentation and summaries
- Discussion of integration of neighboring community participation
- Discussion of integration of other parish and jurisdiction plans to the HM Update
- Planning committee members identified

# Appendix B: Plan Maintenance

- Review of HM plan **annual** maintenance by the Union Parish OHSEP Director.
- Assign responsible parties for review and edits of the plan



# Appendix C: Critical Facilities

- Updated list of critical facilities by jurisdiction
- Will identify which hazards within the risk assessment pose a threat to each facility
- Facilities must be parish or jurisdiction owned





# Appendix D: Plan Adoption

- Parish and jurisdiction council resolutions must be adopted, signed, and placed into the final planning document – **AFTER the plan is issued APA.**
- Each jurisdiction **MUST** adopt the plan after APA
- As a planning team member, be aware of the policies for your jurisdiction

RESOLUTION NO. 2018-05

WHEREAS, UNION PARISH is a grant recipient of Hazard Mitigation Grant Program (HMGP) funding through the Louisiana Governor's Office of Homeland Security and Emergency Preparedness (GOHSEP) and the Federal Emergency Management Agency (FEMA) for the purpose of reviewing and updating the Union Parish Hazard Mitigation Plan.

WHEREAS, the Plan will enable the Parish to better prepare for and reduce the effects of disasters and;


WHEREAS, UNION PARISH formed a Steering Committee consisting of state and local governments and agencies, local organizations, businesses and private citizens and;


WHEREAS, this Steering Committee has prepared and reviewed the Union Parish Hazard Mitigation Plan and updated it accordingly, now titled (the Union Parish – Multi Jurisdiction Hazard Mitigation Plan Update 2018, HMGP # 4080-0005) that will guide the Parish and;

NOW, THEREFORE, BE IT RESOLVED BY THE POLICE JURY OF UNION PARISH, LOUISIANA, in Special Session convened on the 12<sup>th</sup> day of July 2018, that it does hereby formally adopt the Union Parish – Multi Jurisdiction Hazard Mitigation Plan, Update 2018, HMGP # 4080-0005.

This resolution was declared adopted on July 12<sup>th</sup>, 2018 at its special meeting where a Quorum was present. The vote was as follows:



YEAS: Sawyer, Parker, Taylor, Hutto, Kennedy, Futch, Smith, Jones, Watley  
NAYS: None  
ABSENT: None

  
Paula Strickland  
Secretary-Treasurer  
Union Parish Police Jury

  
Jerry W. Taylor  
President  
Union Parish Police Jury

\*\*\*\*\*CERTIFICATION\*\*\*\*\*

I, Paula Strickland, Secretary Treasurer, Union Parish Police Jury, do hereby certify that the above and foregoing is a true and correct copy of a Resolution adopted by the Police Jury of Union Parish, Louisiana, convened in Special Session on the 12<sup>th</sup> day of July, 2018, at which time a quorum was present and voting.

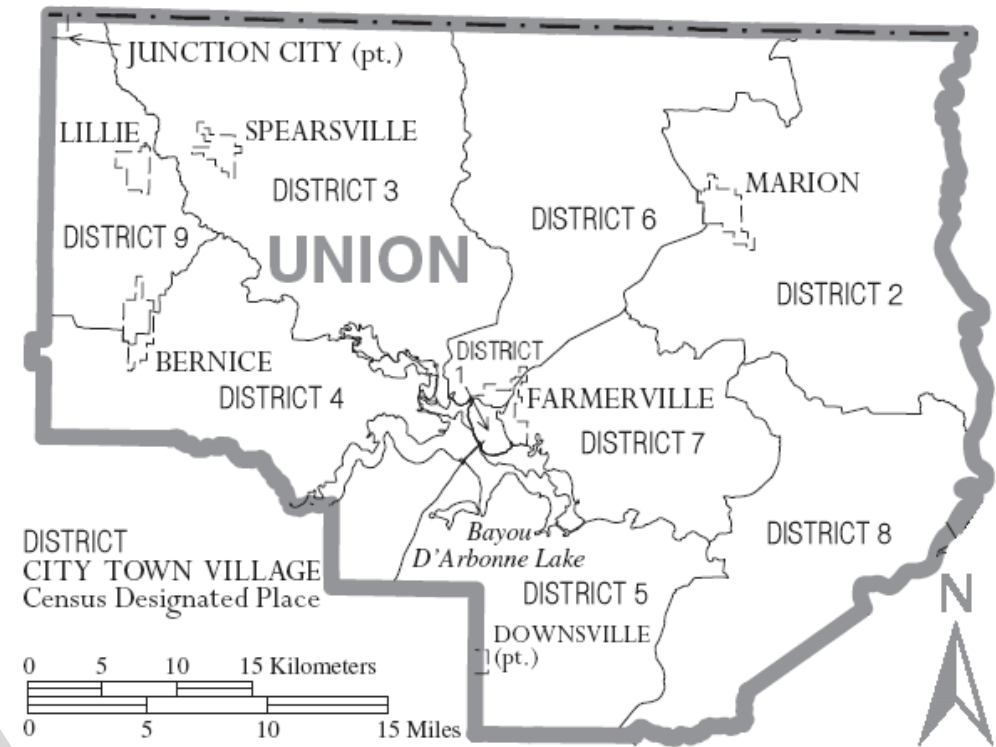
  
  
PAULA STRICKLAND



# Appendix E: State Required Worksheets

Each jurisdiction **MUST** fill these out:

- Capability Assessment
- NFIP Worksheet
- Critical Facilities/Building Inventory
- Vulnerable Population



# Capability Assessment

Capability Assessment Worksheet - Unincorporated Union Parish		
Local mitigation capabilities are existing authorities, policies and resources that reduce hazard impacts or that could be used to implement hazard		
Planning and Regulatory		
Please indicate which of the following plans and regulatory capabilities your jurisdiction has in place.		
Plans	Yes/No	Comments
Comprehensive / Master Plan	No	
Capital Improvements Plan	No	
Economic Development Plan	No	
Local Emergency Operations Plan	No	
Continuity of Operations Plan	No	
Transportation Plan	No	
Stormwater Management Plan	No	
Community Wildfire Protection Plan	No	
HHPD Emergency Action Plan	Yes	
Other plans (redevelopment, recovery, coastal zone management)	No	
Building Code, Permitting and Inspections	Yes/No	Comments
Building Code	Yes	
Building Code Effectiveness Grading Schedule (BCEGS) Score	No	
Fire Department ISO/PIAL rating	No	
Site plan review requirements	No	
Land Use Planning and Ordinances	Yes/No	Comments
Zoning Ordinance	Yes	
Subdivision Ordinance	Yes	
Floodplain Ordinance	Yes	
Natural Hazard Specific Ordinance (stormwater, steep slope, wildfire)	No	
Flood Insurance Rate Maps	Yes	
Acquisition of land for open space and public recreation uses	No	
Other	No	

*Place answers in Yes/No column, add comments if necessary (i.e. what year the plan was updated last)*

# National Flood Insurance Program

## National Flood Insurance Program (NFIP)

### Insurance Summary

How many NFIP policies are in the community? What is the total premium and coverage?

How many claims have been paid in the community? What is the total amount of paid claims? How many of the claims were for substantial damage?

How many structures are exposed to flood risk with in the community?

Describe any areas of flood risk with limited NFIP policy coverage.

### Staff Resources

Is the Community FPA or NFIP Coordinator certified?

Is flood plain management an auxiliary function?

Provide an explanation of NFIP administration services (e.g., permit review, GIS, education or outreach, inspections, engineering capability)

What are the barriers to running an effective NFIP program in the community, if any?

### Compliance History

Is the community in good standing with the NFIP?

Are there any outstanding compliance issues(i.e., current violations)?

When was the most recent Community Assistance Visit (CAV) or Community Assistance Contact(CAC)?

Is a CAV or CAC scheduled or needed? If so when?

### Comments

- FEMA can provide this information, or local/parish floodplain managers





# Building Inventory

**Building Inventory - Unincorporated Union Parish**

Name of Building	Purpose of Building	Address	City	Latitude	Longitude	Assessed Value	Date Built	Contstruction Type
UNION PARISH COURTHOUSE	PUBLIC BUILDING THAT HOUSES CLERK, JUDGES, 911 OFFICES	100 EAST BAYOU STREET	FARMERVILLE	32.773663	-92.404965	\$ 189,612.00	1961	Concrete
UNION PARISH COURTHOUSE ANNE	PUBLIC BUILDING THAT HOUSES PJ STAFF, DRIVERS LIC BUREAU, REG OF VOT	303 EAST WATER STREET	FARMERVILLE	32.773145	-92.403039	\$ 65,442.00	1975	Concrete
UNION PARISH TAX ASSESSOR	PUBLIC BUILDING THAT HOUSES TAX ASSESSOR AND STAFF	101 NORTH MAIN STREET	FARMERVILLE	32.774255	-92.405528	\$ 52,125.00	1996	Concrete
UNION PARISH HEALTH UNIT	HEALTH UNIT	1002 MARION HIGHWAY	FARMERVILLE	32.786336	-92.391157	\$ 23,747.00	1950	Concrete
UNION PARISH DETENTION CENTER	HOUSES INMATES	707 RODEO CIRCLE	FARMERVILLE	32.738981	-92.412465	\$ 687,365.00	1991	Concrete
UNION PARISH LIBRARY	LIBRARY	202 WEST JACKSON	FARMERVILLE	32.774877	-92.406473	\$ 38,101.00		Concrete
UNION PARISH HIGHWAY DEPARTMENT	PUBLIC BUILDING THAT HOUSES HIGHWAY DEPT	605 BETTY STREET	FARMERVILLE	32.77159	-92.412089	\$ 32,505.00	1978	Concrete
UNION PARISH LANDFILL	PUBLIC BUILDING THAT LANDFILL STAFF UTILIZES	356 LANDFILL ROAD	FARMERVILLE	32.816108	-92.391039	\$ 2,491.00	1984	Concrete



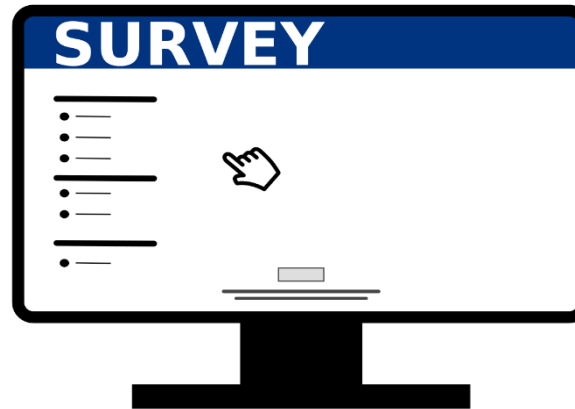
# Vulnerable Populations

[illegible]

# Parish Mitigation Survey

- Collects information from citizens regarding their perceptions of local hazards and mitigation efforts
- Results will be included in the plan if there are enough responses

[https://lsu.qualtrics.com/jfe/form/SV\\_bgx0akjgvvyc2RE](https://lsu.qualtrics.com/jfe/form/SV_bgx0akjgvvyc2RE)



HOMELAND SECURITY &  
EMERGENCY PREPAREDNESS

# SDMI Hazard Mitigation Website

- Repository for materials used during update process
- <https://hmplans.sdmi.lsu.edu/Home/Parish/union>

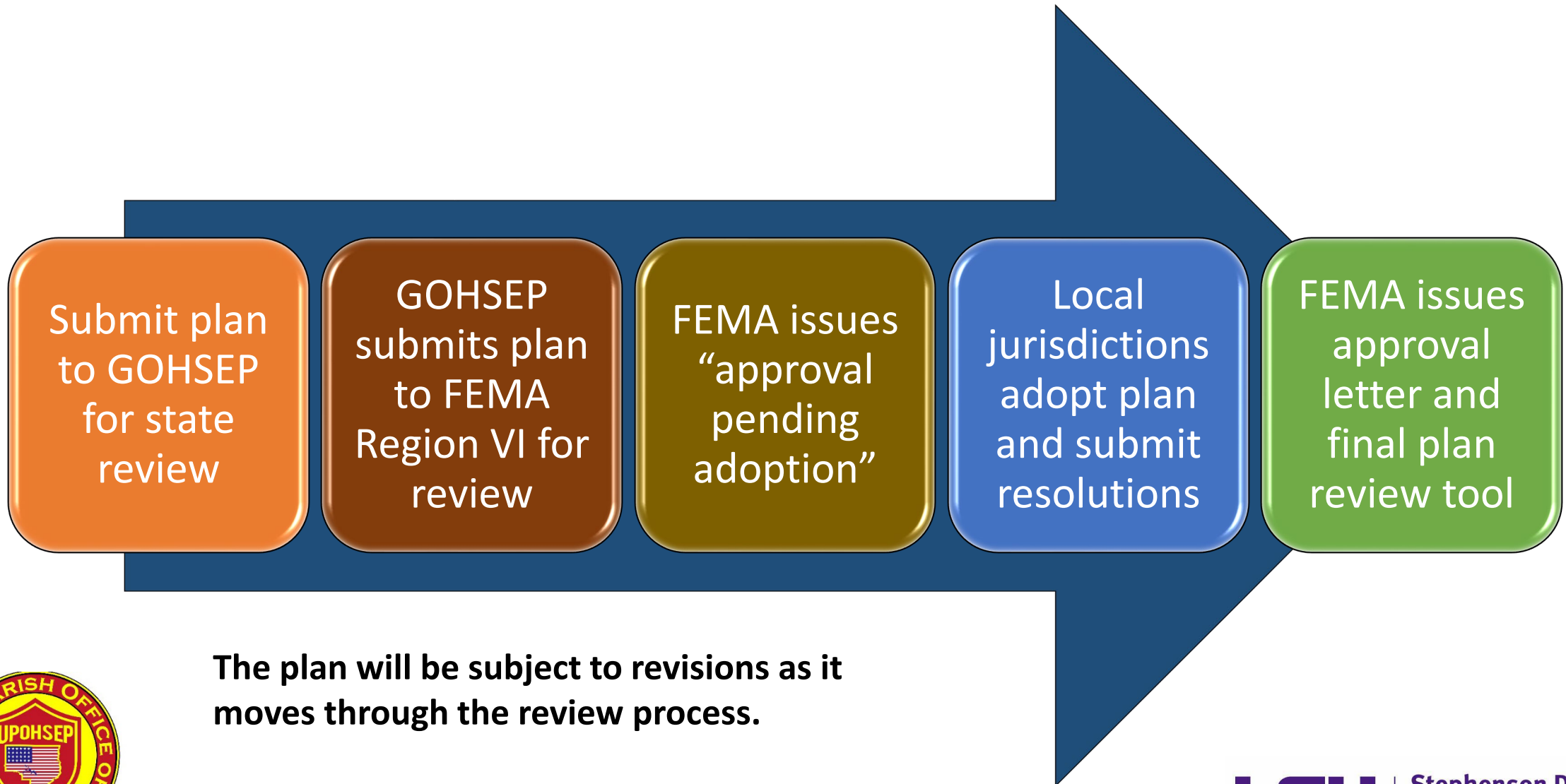
The screenshot displays the 'Union Parish' page on the SDMI Hazard Mitigation Website. At the top, the LSU logo and 'Stephenson Disaster Management Institute' are visible, along with a 'SDMI HOME' button and social media icons. The 'HAZARD MITIGATION' section includes a navigation bar with 'Intro', 'Events', 'FEMA Resources', 'Parish Plans', and 'Settings'. The 'Union Parish' header features a 'PLAN DUE DATE: FEBRUARY 18 2024' badge. Below this, a 'DEVELOPMENT STATUS' timeline shows four stages: 'PLAN DEVELOPMENT' (yellow), 'PLAN REVIEW' (purple), 'PLAN ADOPTION' (purple), and 'COMPLETED' (purple). The timeline includes a 'KICKOFF MEETING MAY 2023' and three 'TBD' (To Be Determined) markers. A 'PARTICIPATING JURISDICTIONS' section lists: Town of Bernice, Village of Downsview, Town of Farmerville, Village of Junction City, Village of Lillie, Town of Marion, Village of Spearsville, and Union Parish, unincorporated areas. A 'MAY 22 2023 UNION PARISH KICKOFF MEETING' event is highlighted with a Zoom link and a download icon. The 'PREVIOUS PLANS' section for 2017 offers download links for the 'UNION HM PLAN', 'UNION PARISH KICK-OFF MEETING', and 'UNION PARISH PUBLIC MEETING'. A 'Survey' section at the bottom includes an 'Access Survey' button. The LSU logo is at the very bottom.



HOMELAND SECURITY &  
EMERGENCY PREPAREDNESS



# Plan Approval Process



The plan will be subject to revisions as it moves through the review process.



# The Final Product

- **FEMA approved Hazard Mitigation Plan**
  - Meets requirements of Title 44 Code of Regulations (CFR) §201.6 for approval and eligibility to apply for FEMA Hazard Mitigation Assistance grant programs.
  - A hazard mitigation project strategy for each jurisdiction
  - A comprehensive list of jurisdiction owned properties
  - Assessment of natural disaster-related risks and vulnerabilities



# Next Steps

- Identify Neighboring Community
  - Ouachita Parish was used in previous plan
- Parish seal/logo
- Worksheet and Mitigation Actions Due Dates
- Dates for Next Meetings
  - Mitigation Action Workshop (Optional)
  - Risk Assessment Review with Committee
  - Public Meeting
- Draft Plan to FEMA
  - 2-3 weeks after the public meeting
- Adoptions
  - AFTER the FEMA Review



# Contact Us

**Brant Mitchell, Director, CEM**

[bmitch9@lsu.edu](mailto:bmitch9@lsu.edu)

(225) 578-5939

**Chris Rippetoe, HM Project Manager, CFM**

[crippe2@lsu.edu](mailto:crippe2@lsu.edu)

(225) 578-6667

**Jason Martin, Emergency Management Analyst**

[jmar293@lsu.edu](mailto:jmar293@lsu.edu)

(225) 578-6264



HOMELAND SECURITY &  
EMERGENCY PREPAREDNESS

