



Vernon Parish Hazard Mitigation Plan Update Public Meeting

Leesville, LA

March 16, 2022



Introductions

- **Vernon Parish OHSEP Director/Planning Committee**
- **Stephenson Disaster Management Institute (SDMI) at LSU**
 - Chris Rippetoe – Hazard Mitigation Program Manager
 - Jessie Jenkins Kirkpatrick – Emergency Management Specialist
- **Governor's Office of Homeland Security and Emergency Preparedness**
 - Jeffrey Giering – State Hazard Mitigation Officer
 - Marion Pearson – Hazard Mitigation Planner



Agenda



Introductions



**Hazard Mitigation
Overview**



Planning Process



**Risk Assessment
Maps**



**Public Outreach
Activities**





The Hazard Mitigation Plan: What is in it for us?



Hazard Mitigation Is....

Any action taken to reduce long term risk to life and property;

On-going process that occurs before, during, and after disasters;

Mitigation actions help prevent damage to a *community's infrastructure, economic, cultural and environmental assets*;

Implementation of mitigation actions leads to building stronger, safer and smarter!

Why Are We Here?



STATE OF LOUISIANA

This document has been prepared by:
Louisiana Governor's Office of Homeland Security
and Emergency Preparedness
7667 Independence Blvd.
Baton Rouge, LA 70806

With Support From:
Department of Geography and Anthropology
Department of Construction Management
Louisiana State University
Baton Rouge, LA 70803

University of New Orleans Center for Hazards Assessment, Response & Technology
(UNO-CHART)
2000 Lakeshore Drive
New Orleans, LA 70148



HAZARD MITIGATION GUIDE
2019

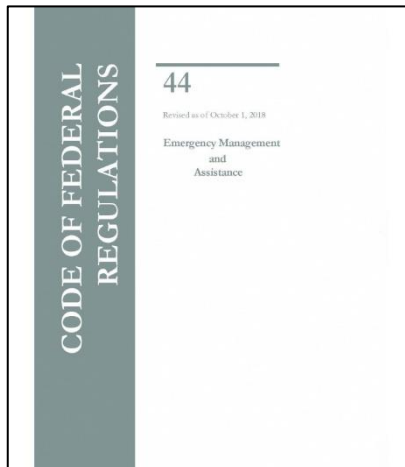
1

Why Are We Required To Have A Hazard Mitigation Plan?

- Disaster Mitigation Act of 2000 (DMA 2000)

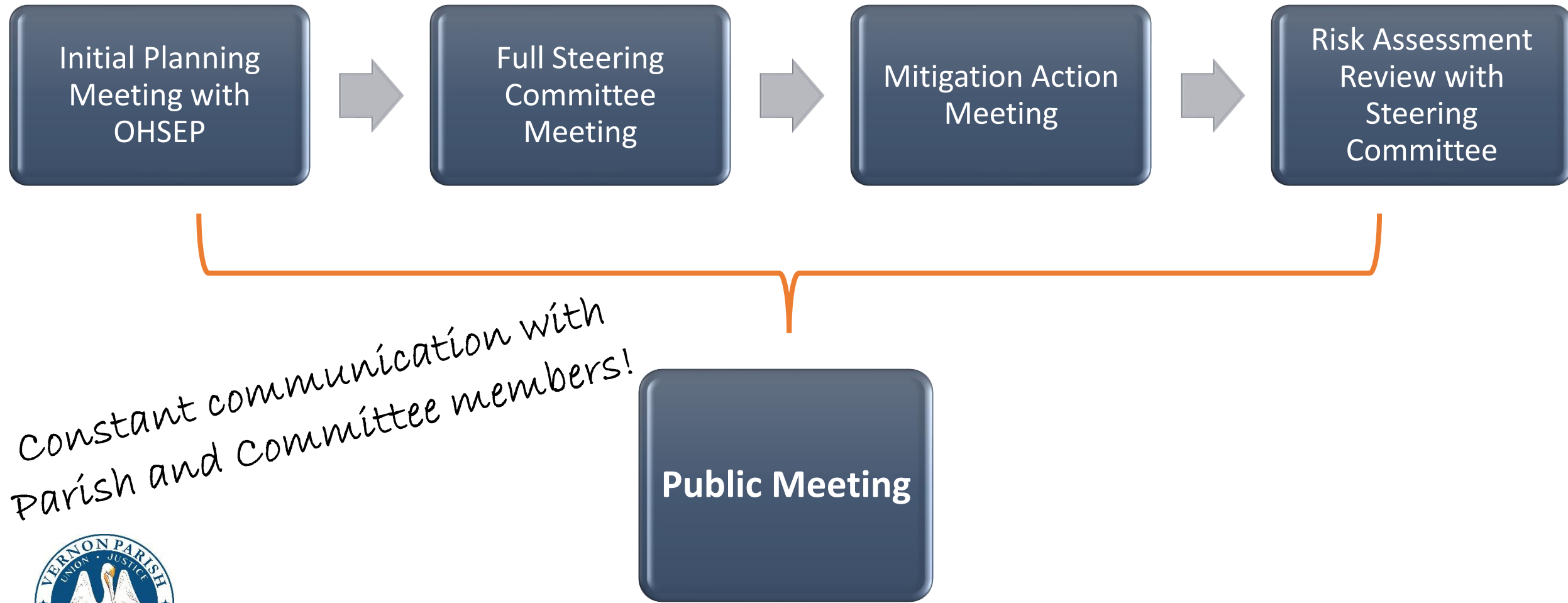
Section 322 of the Act specifically addresses mitigation planning and requires state and local governments to prepare multi-hazard migration plans as a precondition for receiving FEMA mitigation project grants.

- Meet federal requirements of Title 44 Code of Regulations (CFR) §201.6 for approval and eligibility to apply for FEMA Hazard Mitigation Assistance grant programs.

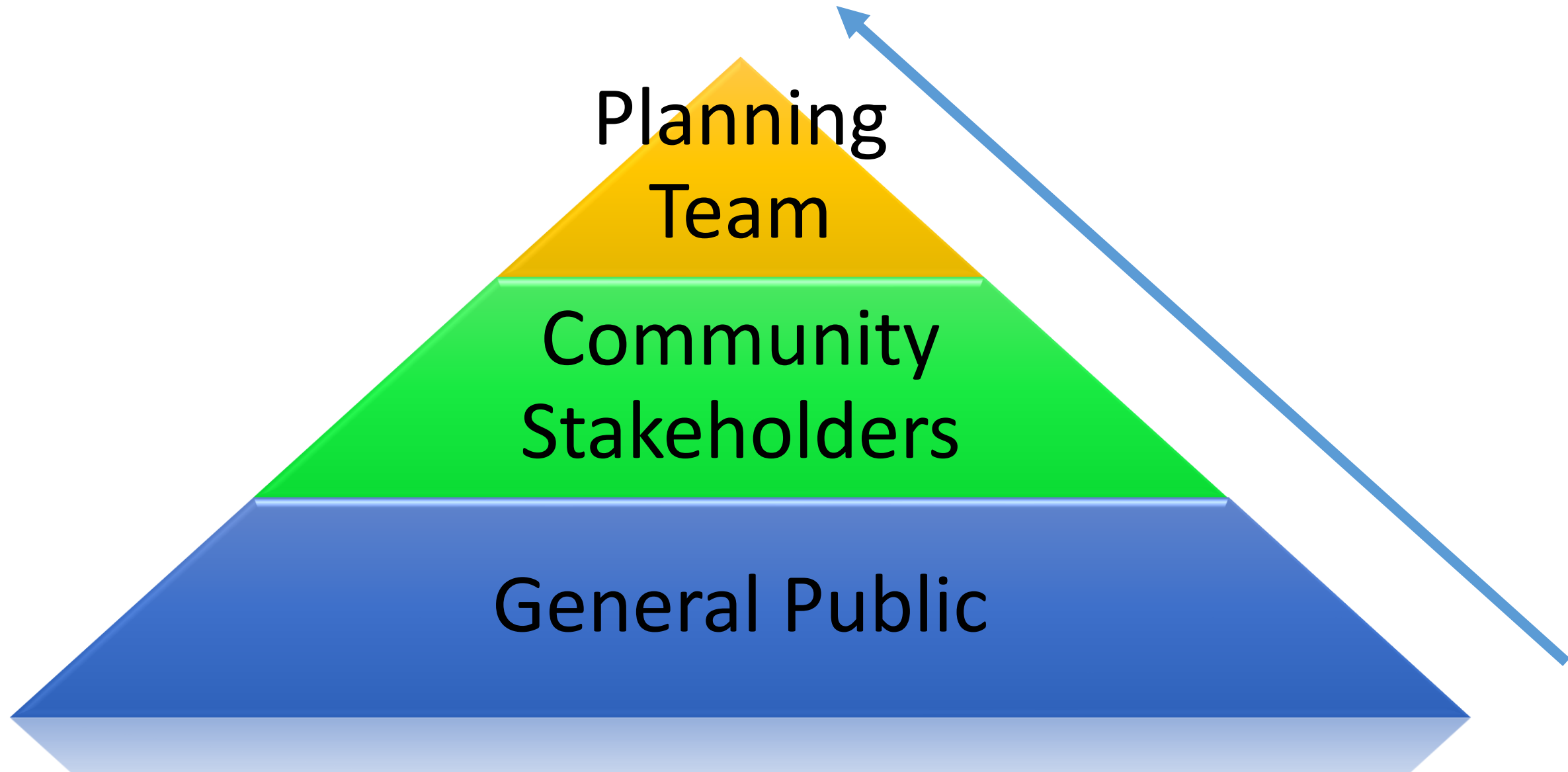


- The approved Vernon Parish Hazard Mitigation Plan will allow for distribution of HM funding following future disasters.

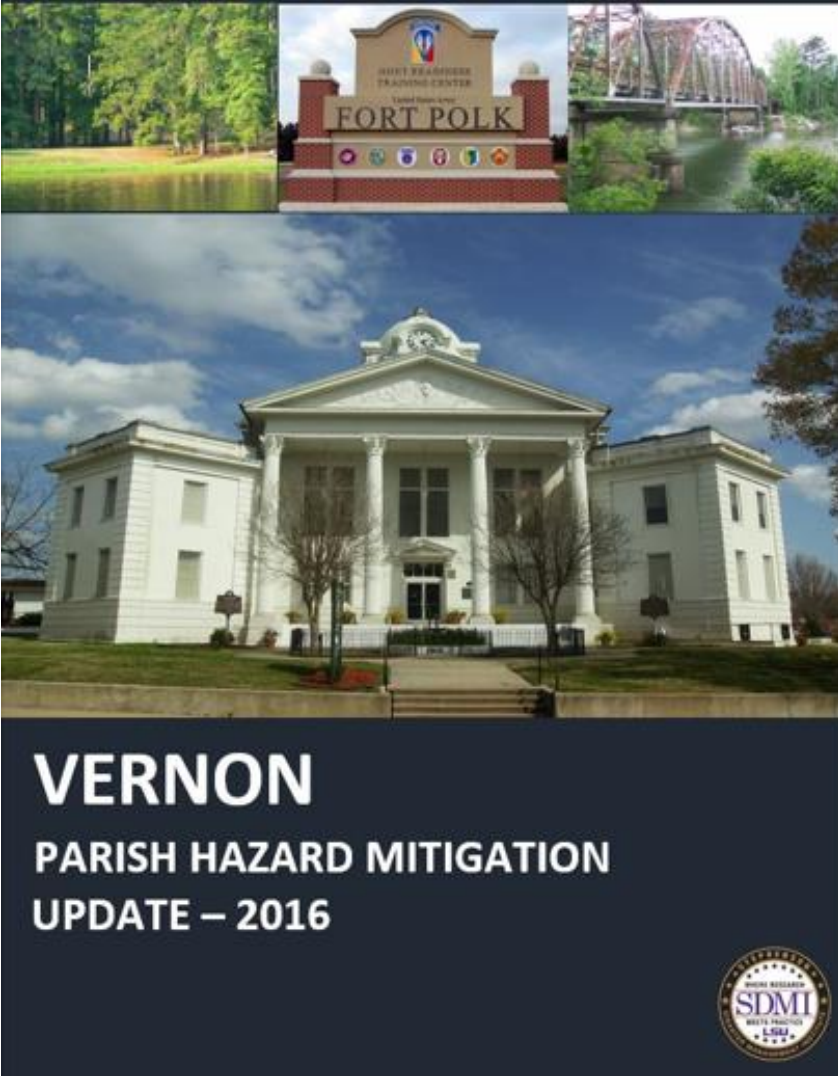
Planning Process to Date



Collaborative Planning Approach



Planning Development



Plan Layout

- **Section 1: Introduction**
 - Update parish description
 - Update demographic and economic information
- **Section 2: Hazard Identification and Parish-wide Risk Assessment**
- **Section 3: Capability Assessment**
- **Section 4: Mitigation Strategies**
 - New actions
 - Action updates
 - Survey results



Plan Layout

- **Appendix A:** Planning Process
- **Appendix B:** Plan Maintenance
- **Appendix C:** Parish Essential Facilities
- **Appendix D:** Plan Adoption
- **Appendix E:** State Required Worksheets



Hazard Identification and Risk Assessment

- The plan includes descriptions of the natural hazards that affect the jurisdictions in the planning area.
- The hazards identification includes the following:
 - *locations affected*
 - *extent or strength*
 - *previous occurrences*
 - *probability of future events*



Hazard Identification and Risk Assessment

- Based on Currently Profiled Risks
- Any Newly Identified Risks
- Prevalent Hazards
- Previous Occurrences
- Probability of Future Events
- Assets Inventory
- Essential Facilities
- Hazard Impact
- Future Development
- Future Hazard Impacts
- Zoning and Land Use
- Hazard Profiles



Hazard Identification and Risk Assessment

- Dam Failure
- Drought
- Excessive Heat
- Flooding
- Levee Failure



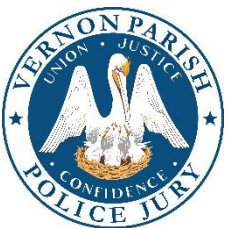
- Thunderstorms
- Tornadoes
- Tropical Cyclones
- Wildfires
- Winter Weather



Risk Matrix for Vernon Parish

Hazard	Probability	Impact	Spatial Extent	Warning Time	Duration	Overall Risk
Dam Failure	1	2	1	4	2	1.85
Drought	2	2	4	2	3	2.55
Extreme Heat	1	1	4	1	4	2.05
Flooding	3	4	3	4	3	3.4
Thunderstorms – Hail	4	2	3	3	1	2.7
Thunderstorms – Lightning	1	2	2	3	1	1.75
Thunderstorms – Wind	4	2	3	3	1	2.7
Tornadoes	4	3	2	4	3	3.2
Tropical Cyclones	3	4	4	1	4	3.3
Wildfires	1	3	4	1	2	2.25
Winter Storms	3	2	2	4	2	2.55

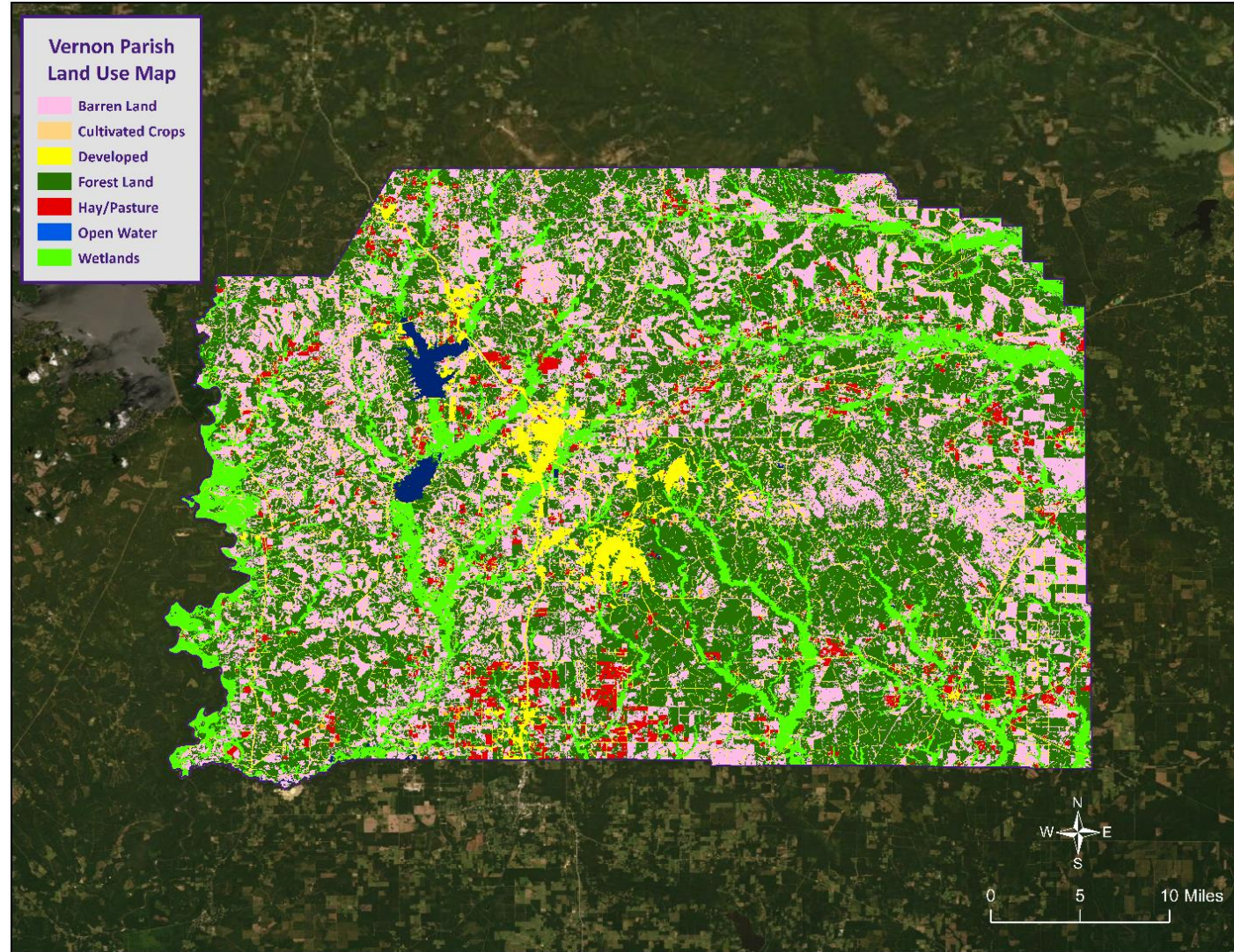
Risk Factor	PRI Range
High Risk	2.5 to 4.0
Moderate Risk	2.0 to 2.4
Low Risk	0 to 1.9



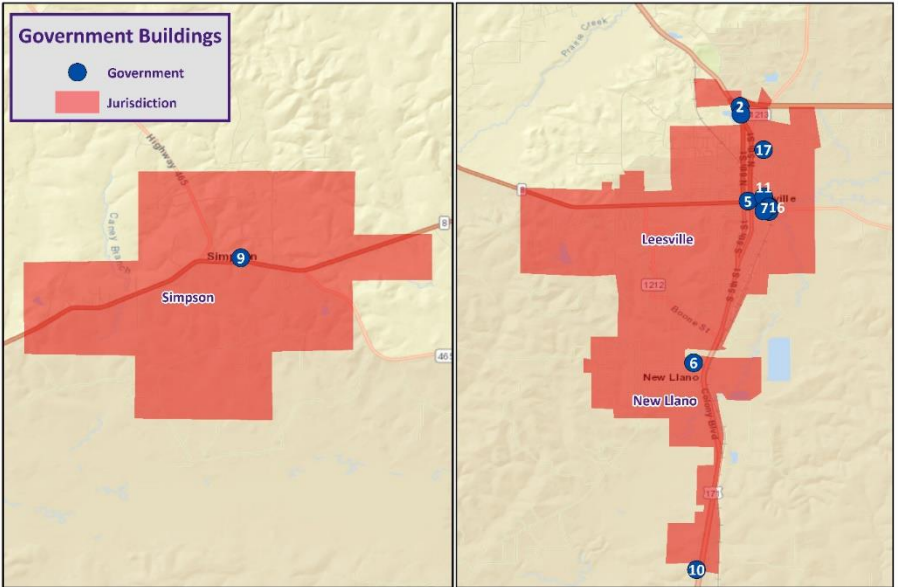
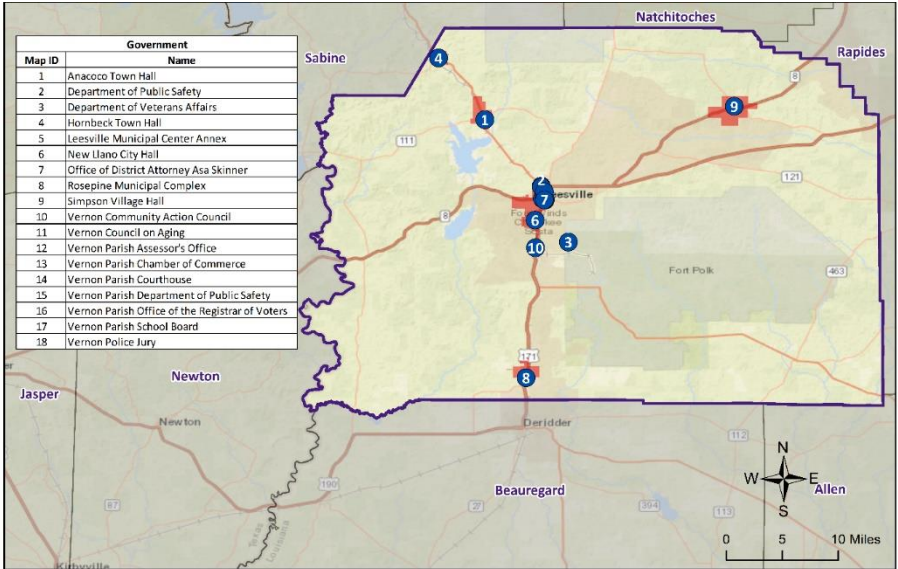


Risk Assessment Maps

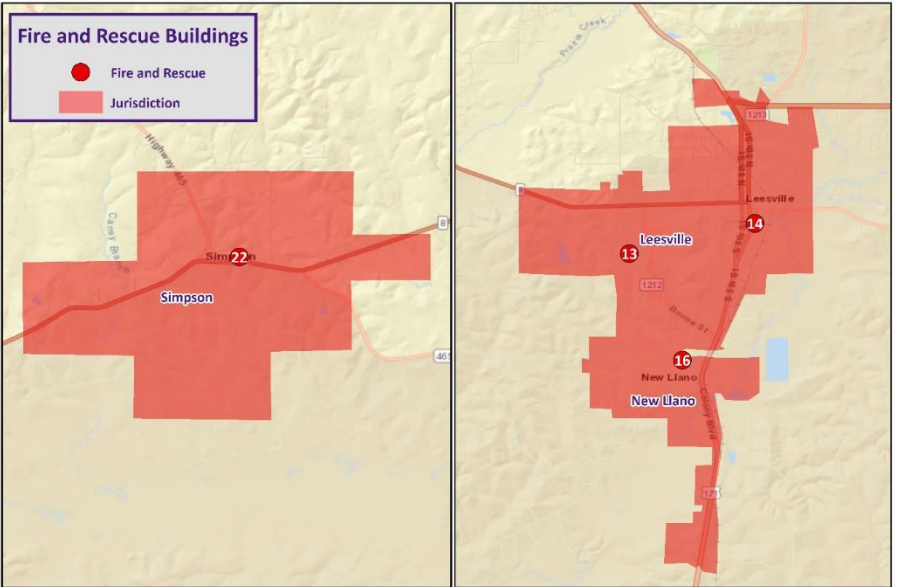
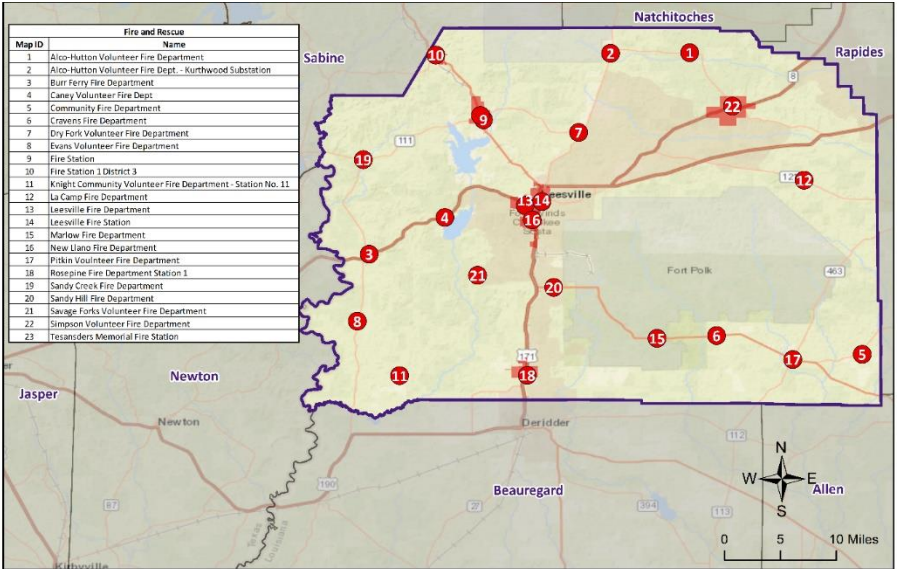
Vernon Parish Land Use



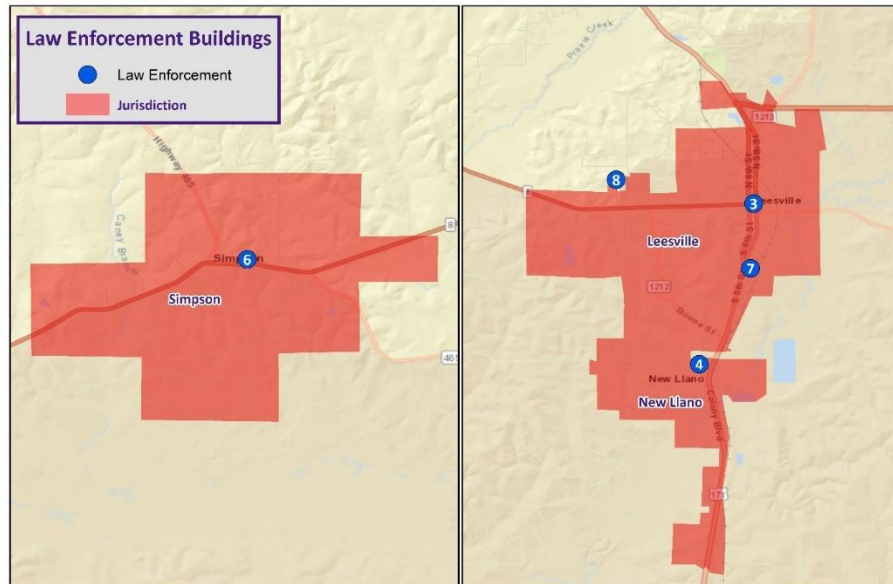
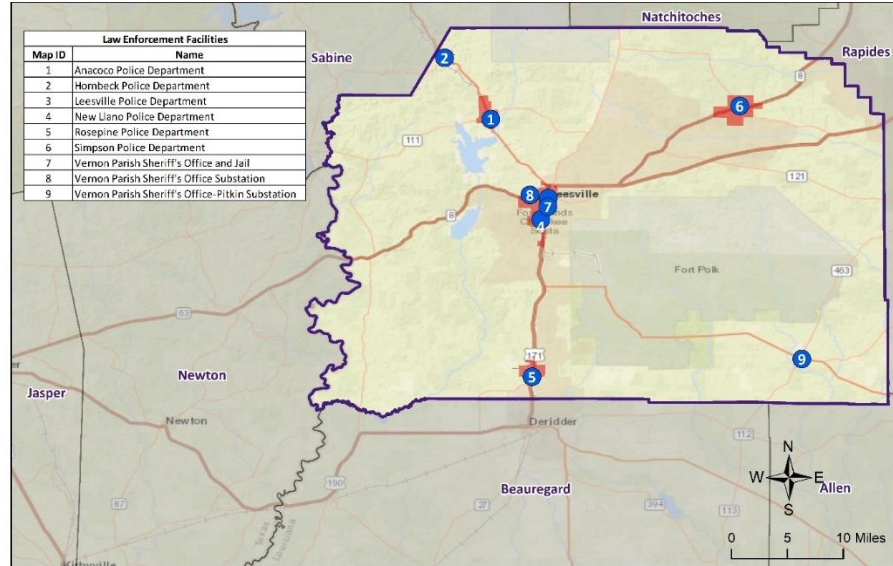
Critical Facilities: Civil Government



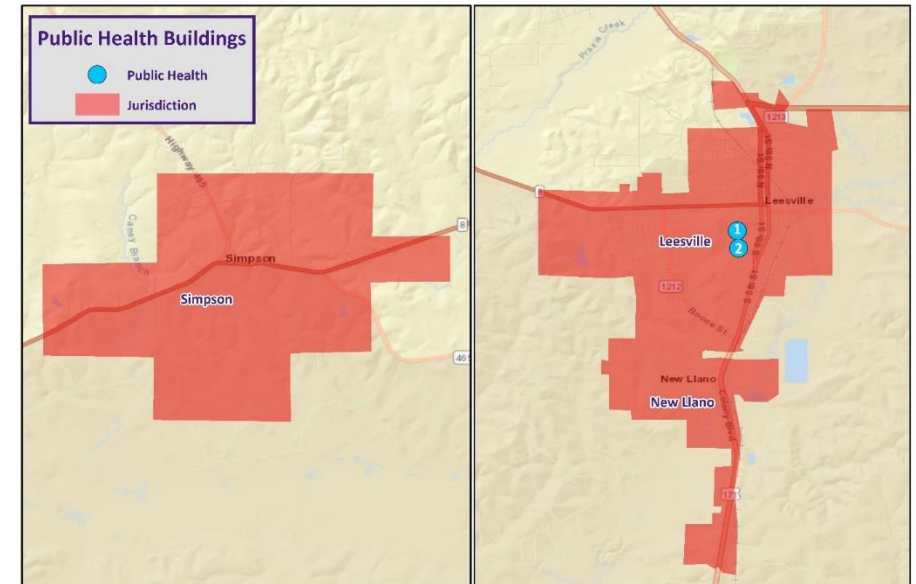
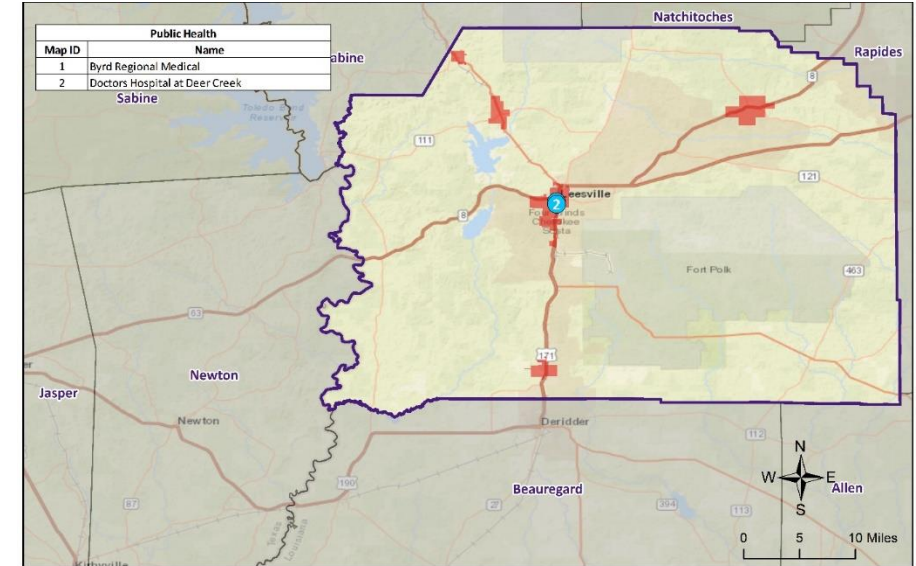
Critical Facilities: Fire & SAR



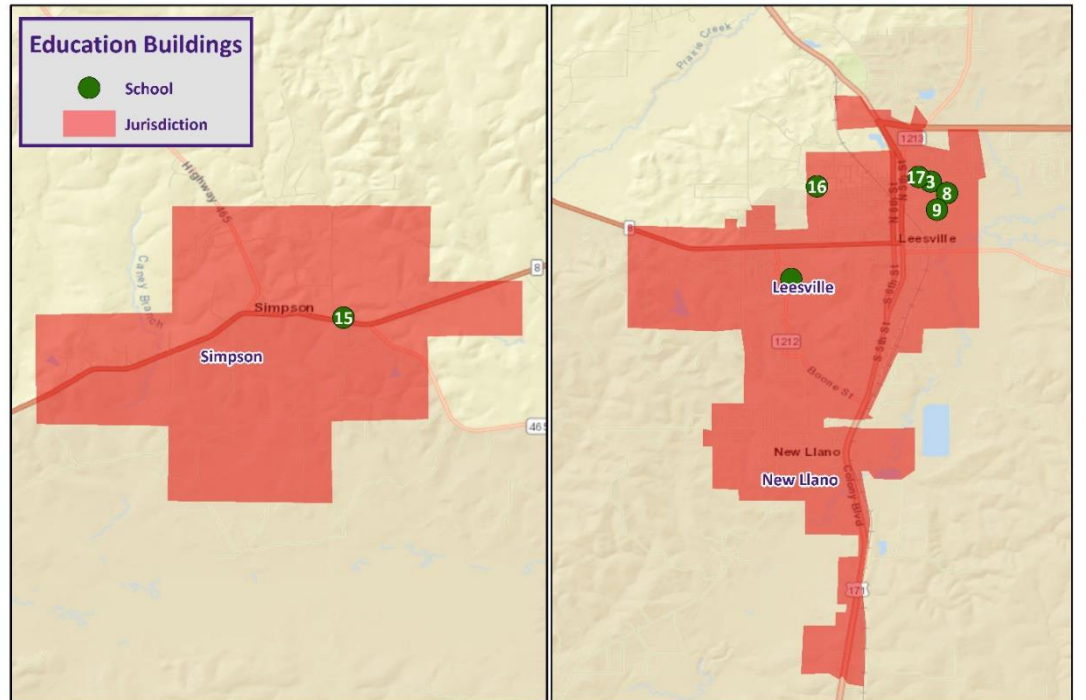
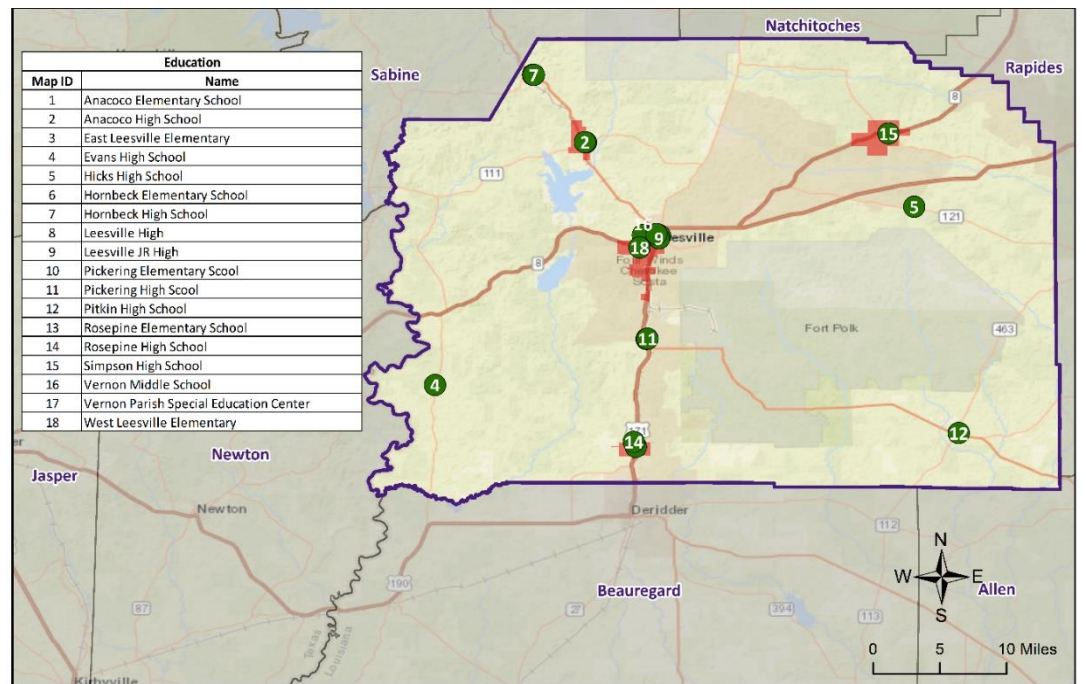
Critical Facilities: Law Enforcement



Critical Facilities: Public Health



Critical Facilities: Education



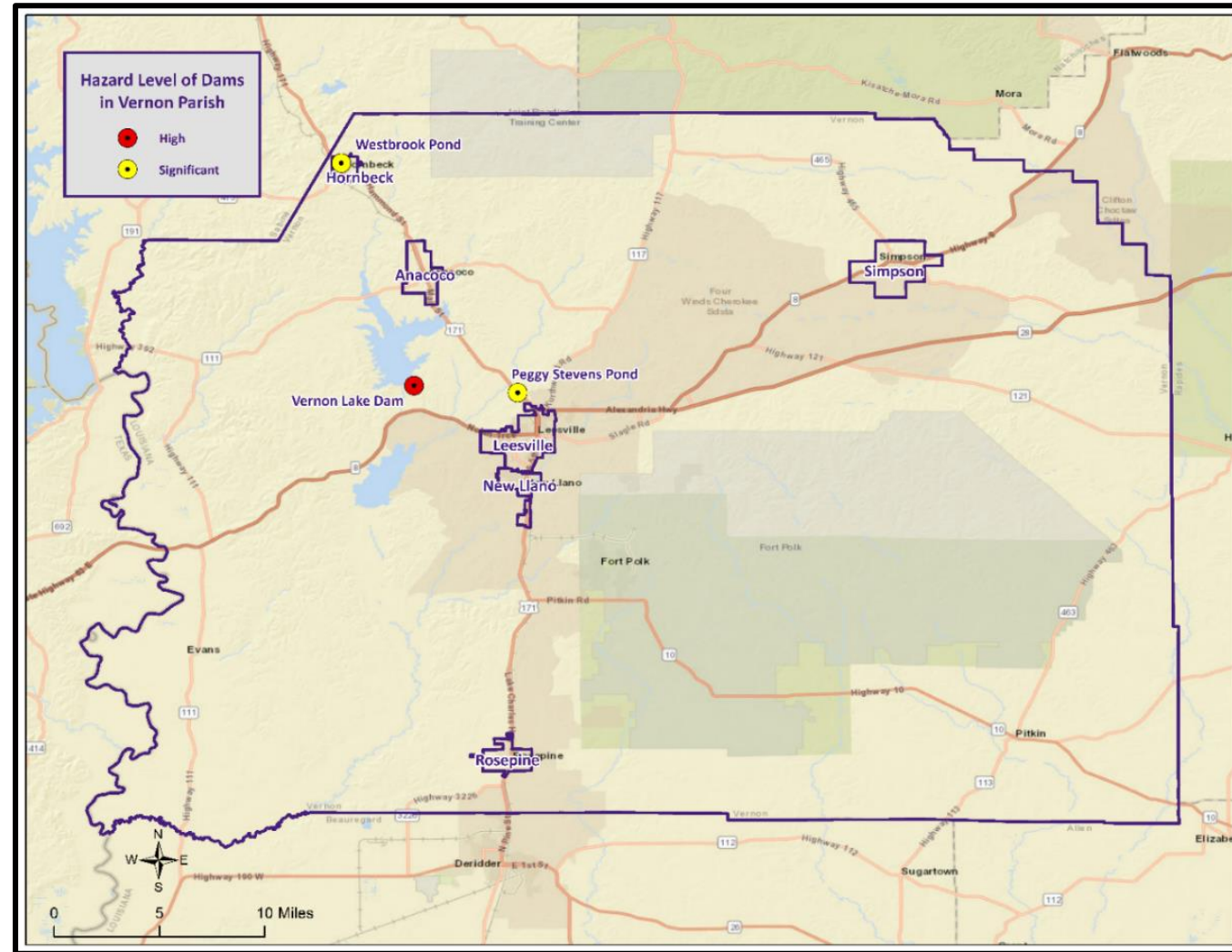
Dam Failure



- A dam is a barrier across flowing water that obstructs, redirects, or slows the flow, often creating a reservoir or lake.
- There are five main causes of dam failure:
 - ✓ Overtopping
 - ✓ Foundation Defects
 - ✓ Cracking
 - ✓ Inadequate maintenance and upkeep
 - ✓ Piping



Location of Dams in Vernon Parish



Drought



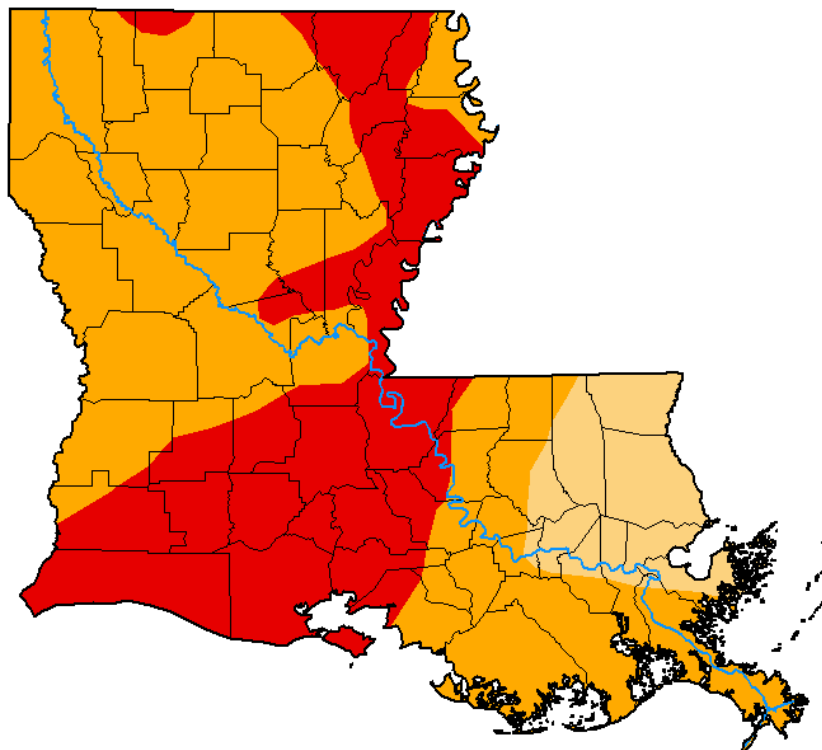
- A drought is a deficiency in water availability over an extended period of time, caused by precipitation totals and soil water storages that do not satisfy the environmental demand for water either by evaporation or transpiration through plant leaves.
- There are four classes of drought:
 - ✓ Meteorological Drought
 - ✓ Hydrologic Drought
 - ✓ Agricultural Drought
 - ✓ Socioeconomic Drought
- Generally, the entire parish will be affected by drought
 - Not limited to one particular location within the parish









Drought Monitor

U.S. Drought Monitor Louisiana

March 8, 2022
(Released Thursday, Mar. 10, 2022)
Valid 7 a.m. EST



Intensity:

-  None
-  D0 Abnormally Dry
-  D1 Moderate Drought
-  D2 Severe Drought
-  D3 Extreme Drought
-  D4 Exceptional Drought

The Drought Monitor focuses on broad-scale conditions. Local conditions may vary. For more information on the Drought Monitor, go to <https://droughtmonitor.unl.edu/About.aspx>

Author:

Brian Fuchs
National Drought Mitigation Center



droughtmonitor.unl.edu



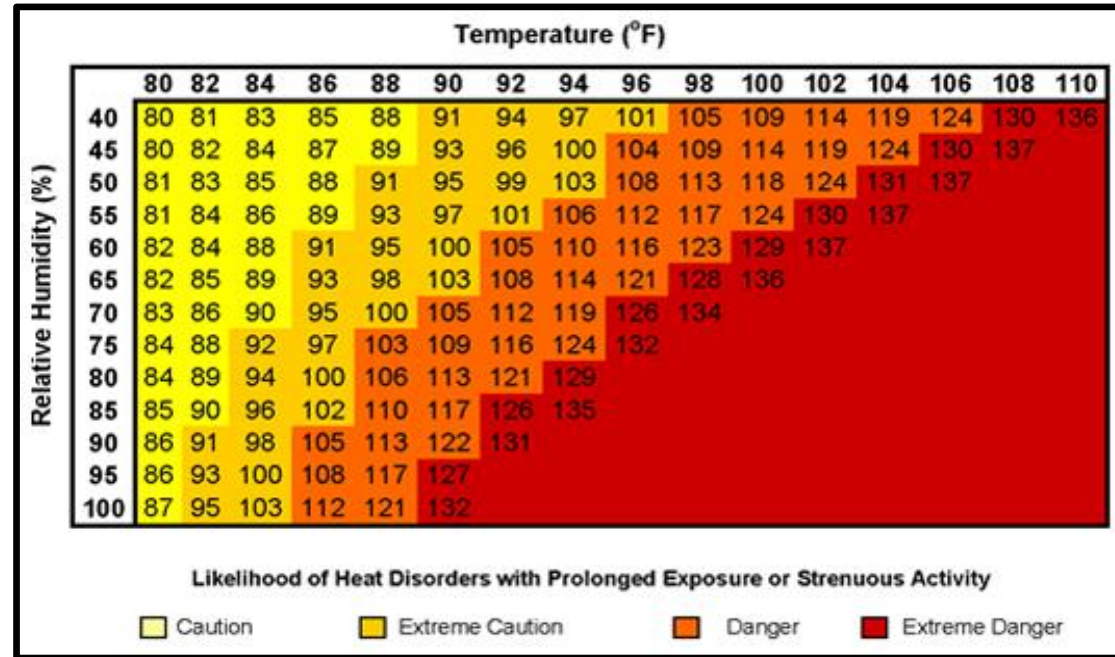
Excessive Heat



- No universal definition for Excessive Heat
- Often seen in conjunction with regional drought
- Heat waves are easier to define
 - At least 5 consecutive days where the daily max temperature exceeds the average max temperature by 9 degrees



Excessive Heat



Heat Index	Risk Level	Protective Measures
Less than 91°F	Lower (Caution)	Basic heat safety and planning.
91°F to 103°F	Moderate	Implement precautions and heighten awareness.
103°F to 115°F	High	Additional precautions to protect workers.
Greater than 115°F	Very High to Extreme	Triggers even more aggressive protective measures.



Flooding

- A flood is the overflow of water onto land that is usually not inundated.
- The National Flood Insurance Program defines a flood as “a general and temporary condition of partial or complete inundation of two or more acres of normally dry land area or of two or more properties from overflow of inland or tidal waves, unusual and rapid accumulation or runoff of surface waters from any source, mudflow, or collapse or subsidence of land along the shore of a lake or similar body of water as a result of erosion or undermining caused by waves or currents of water exceeding anticipated cyclical levels that result in a flood as defined above.”

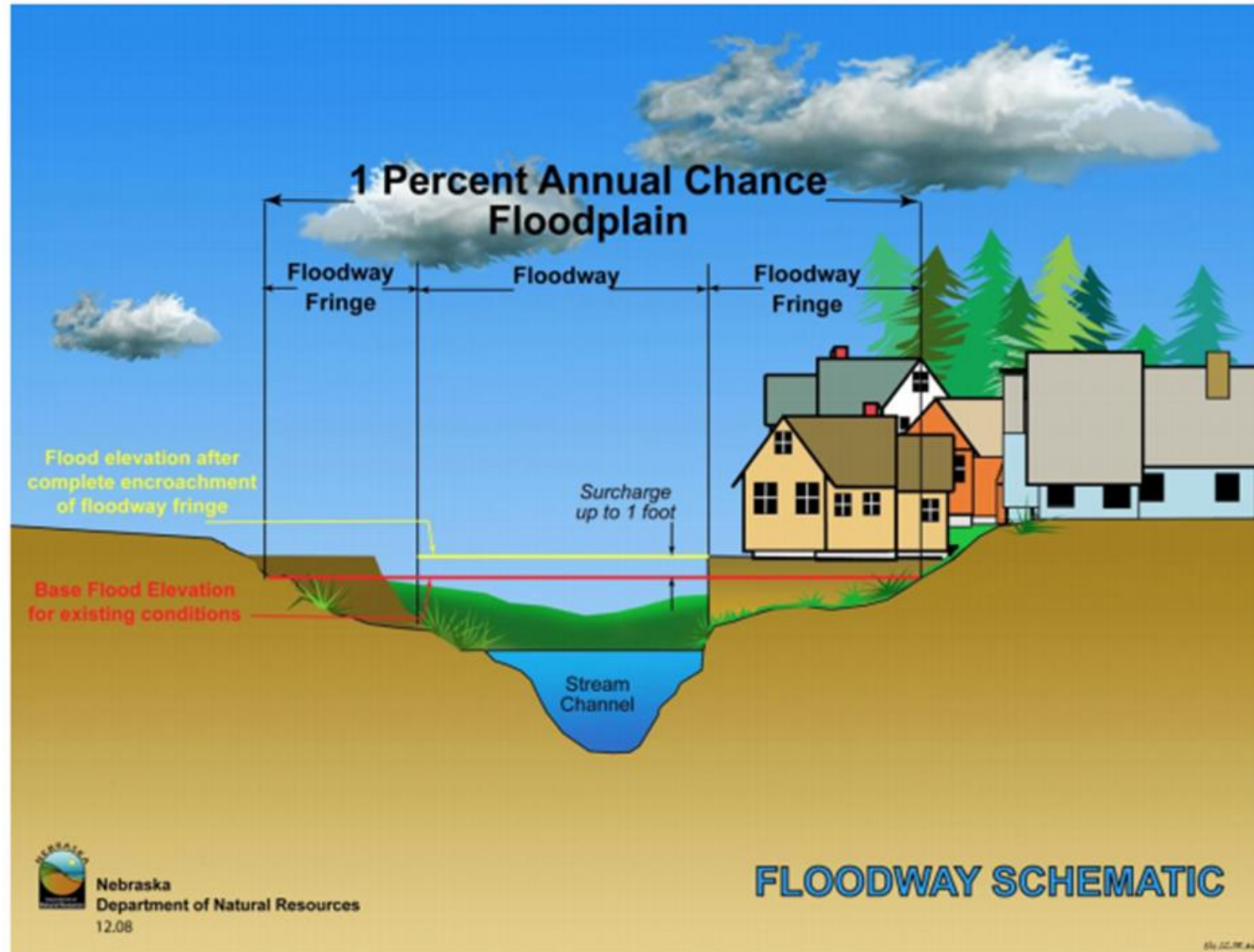
Flooding

Types of flooding may include the following:

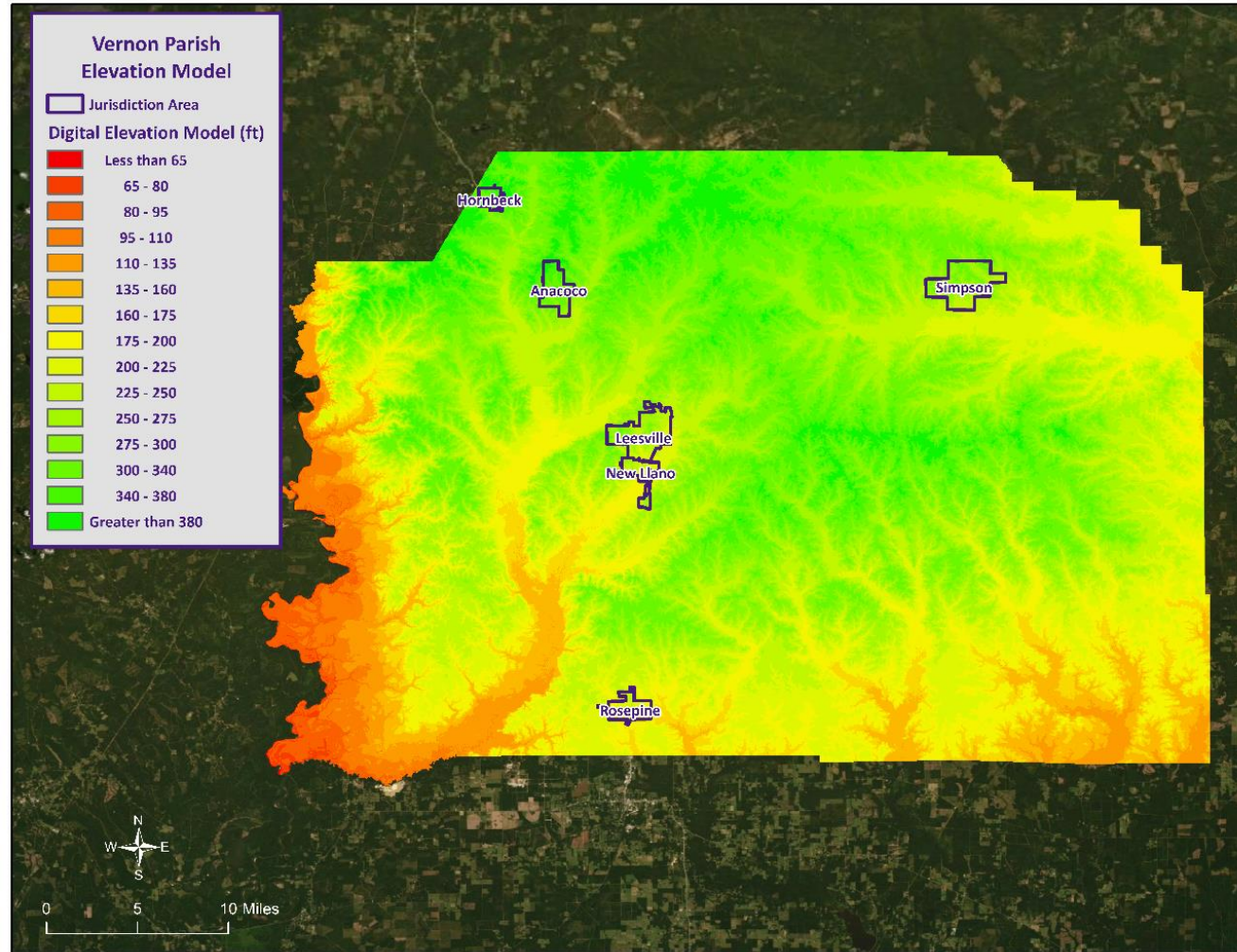
- Riverine
- Flash
- Ponding
- Backwater
- Urban
- Coastal



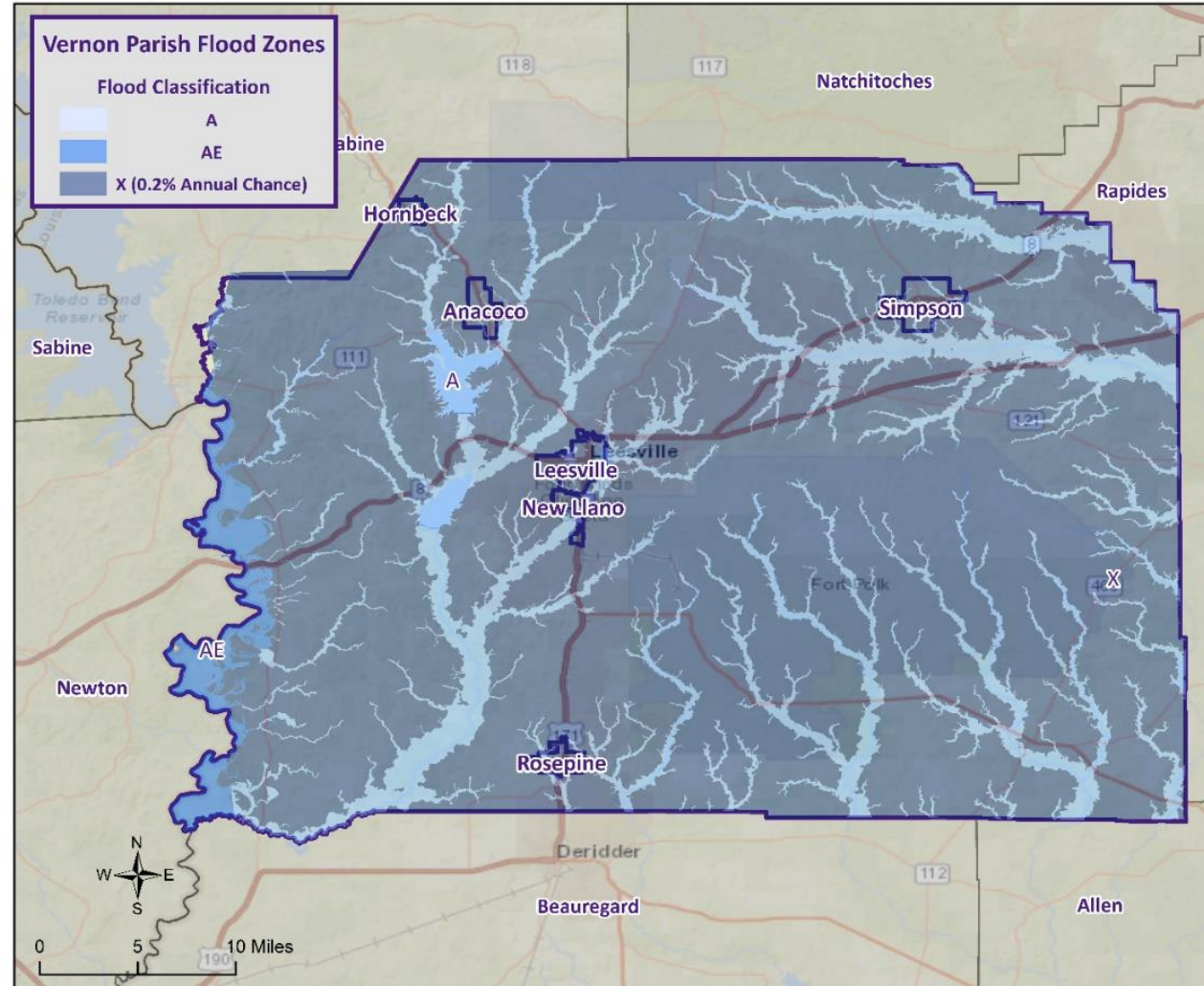
Floodway Diagram



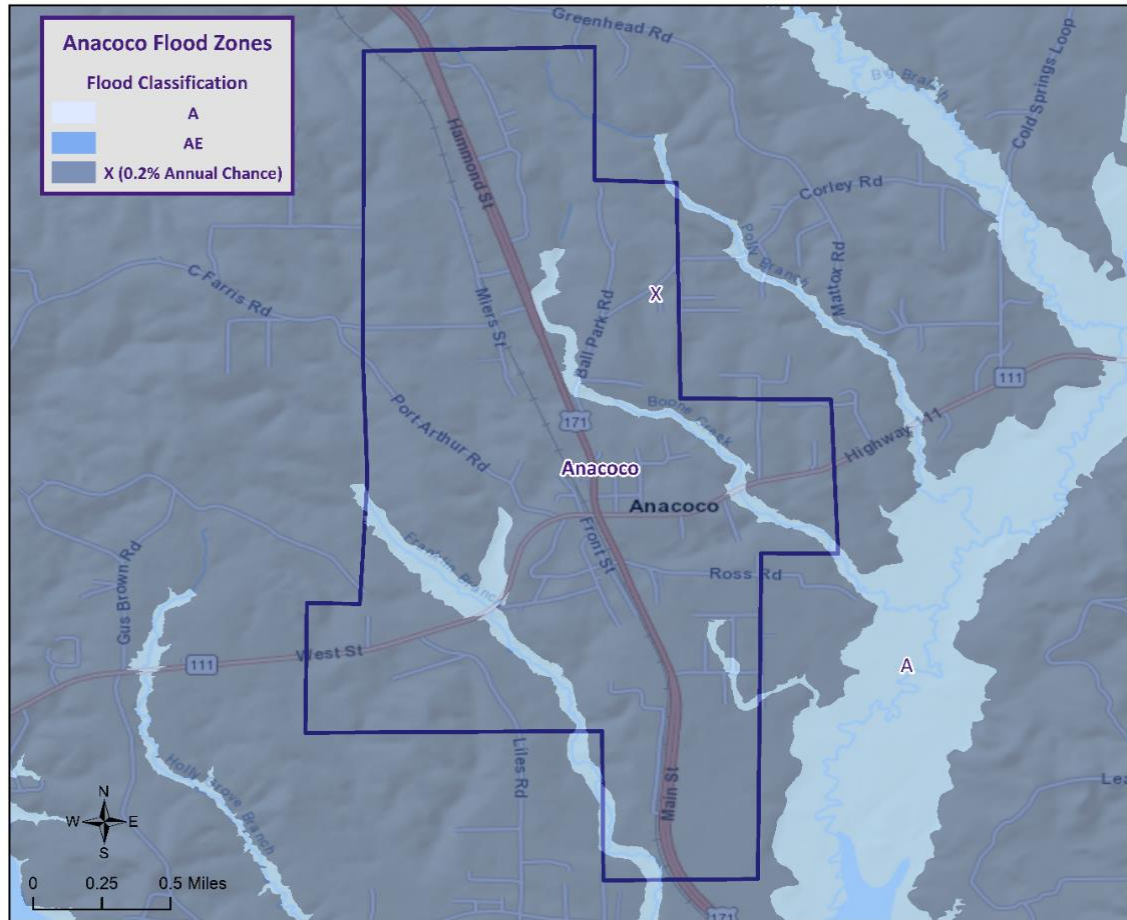
Digital Elevation Model



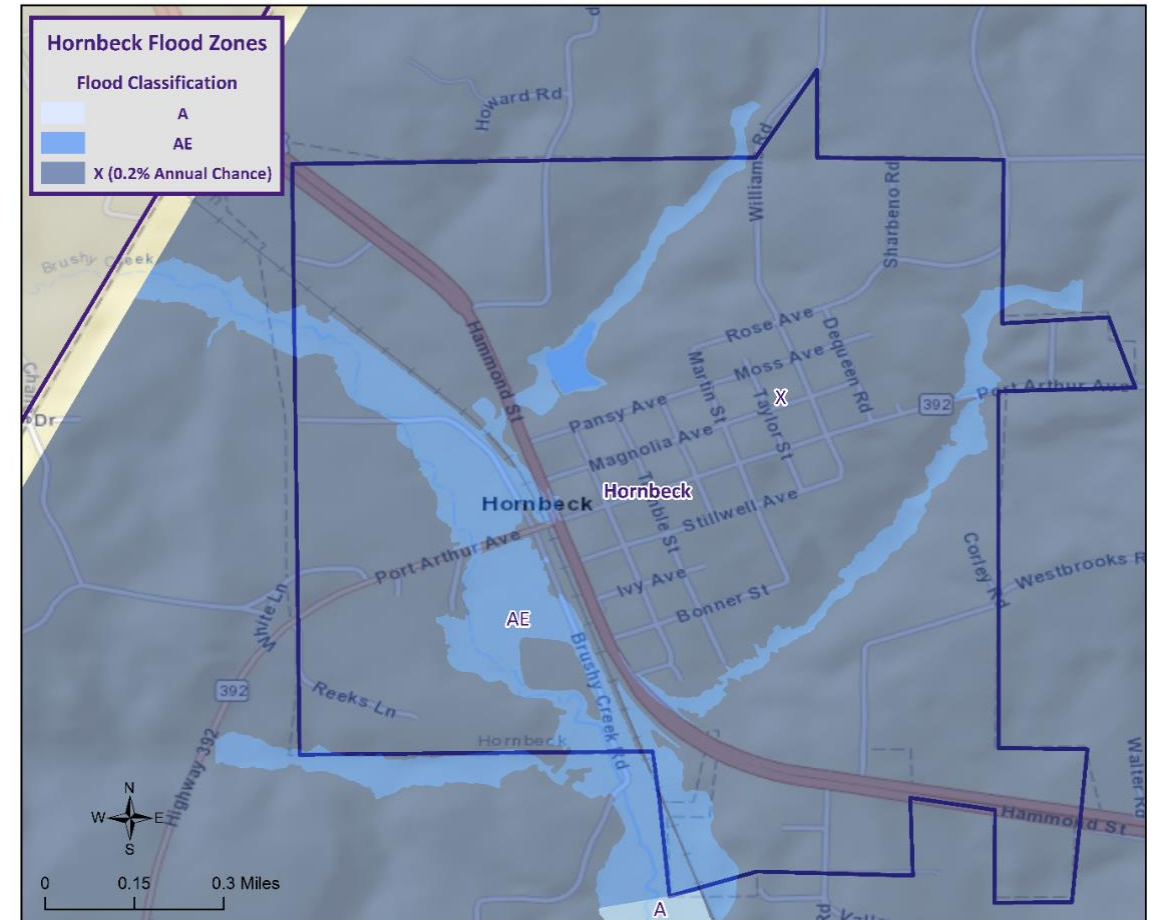
Vernon Parish Flood Map



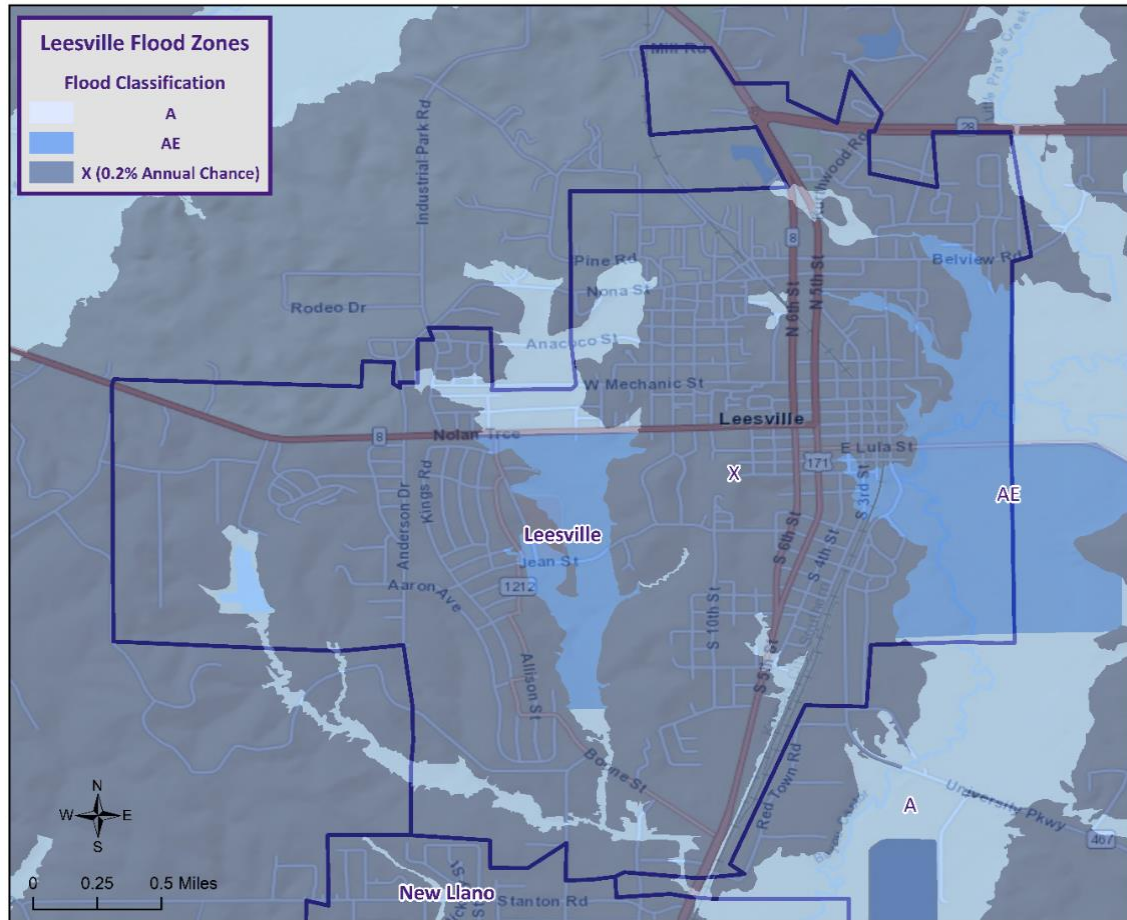
Flood Map: Anacoco



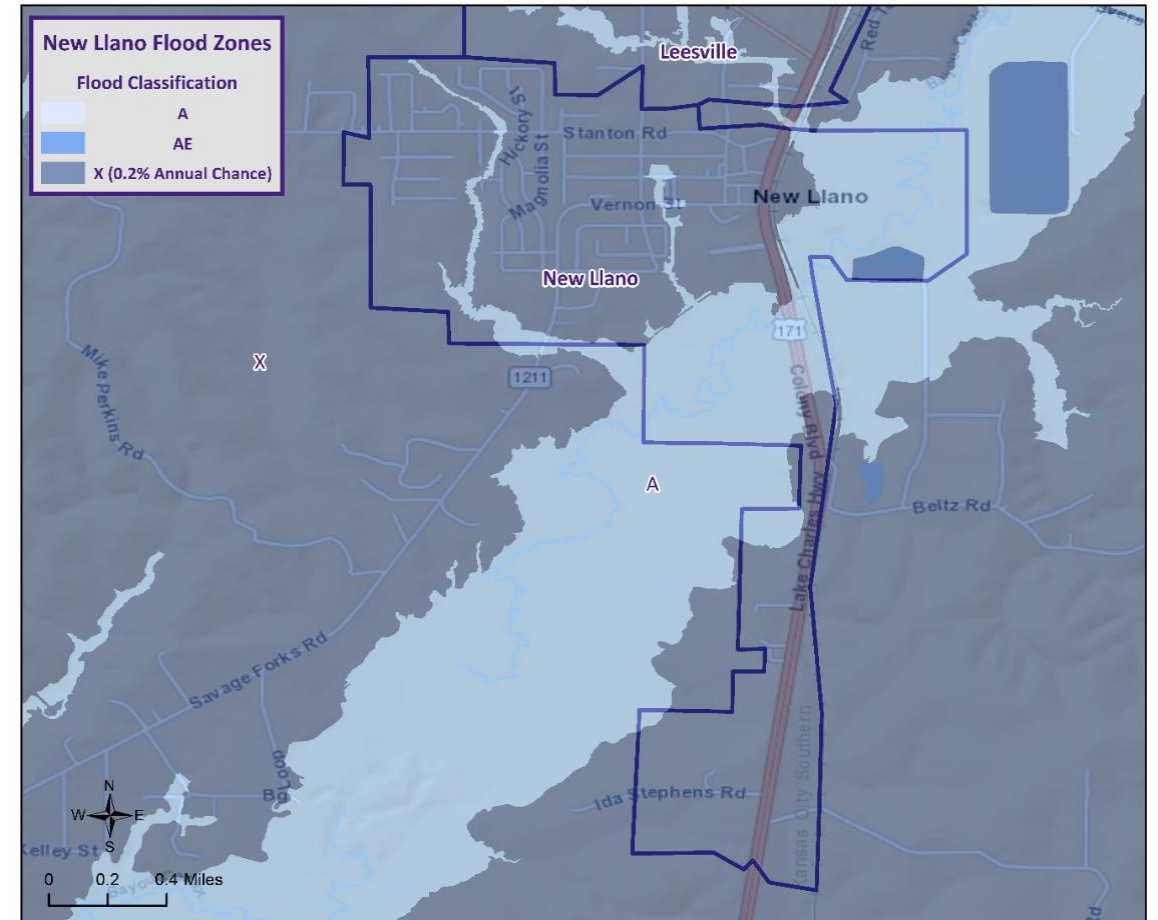
Flood Map: Hornbeck



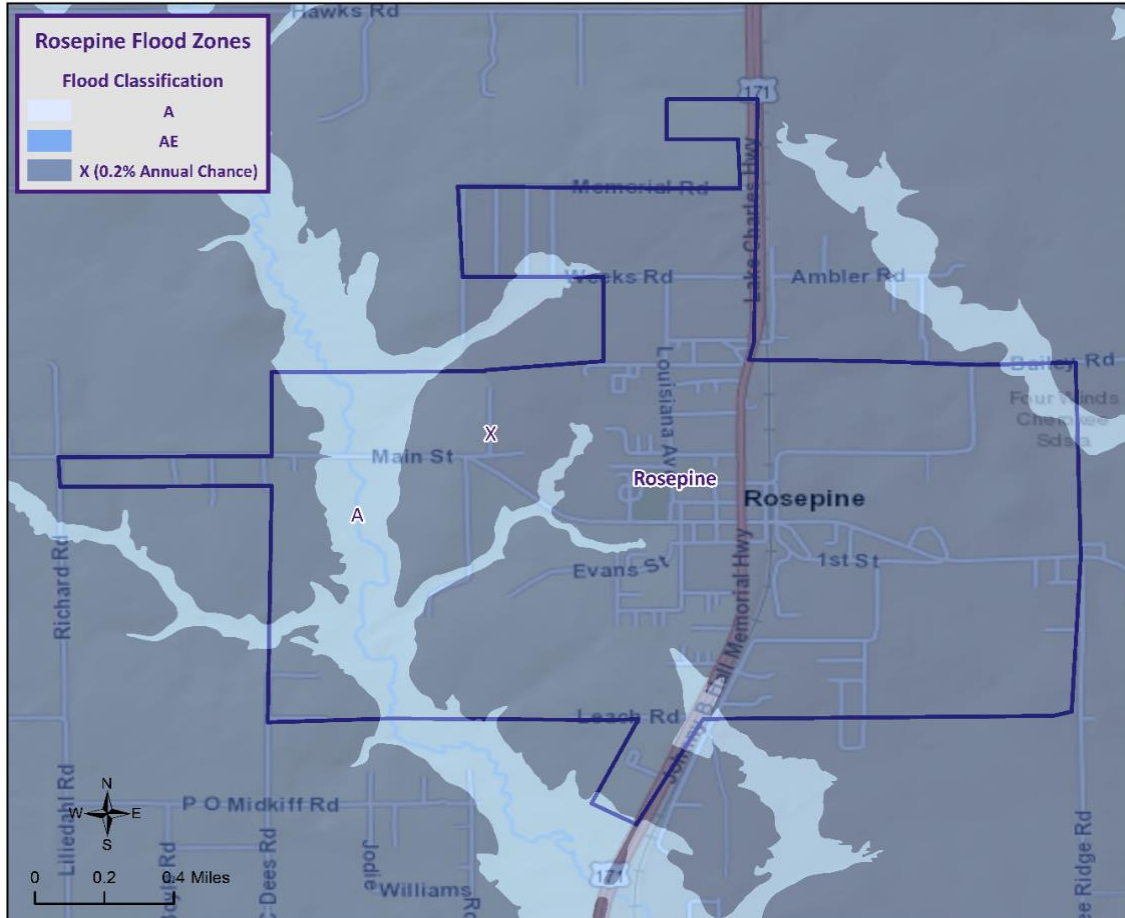
Flood Map: Leesville



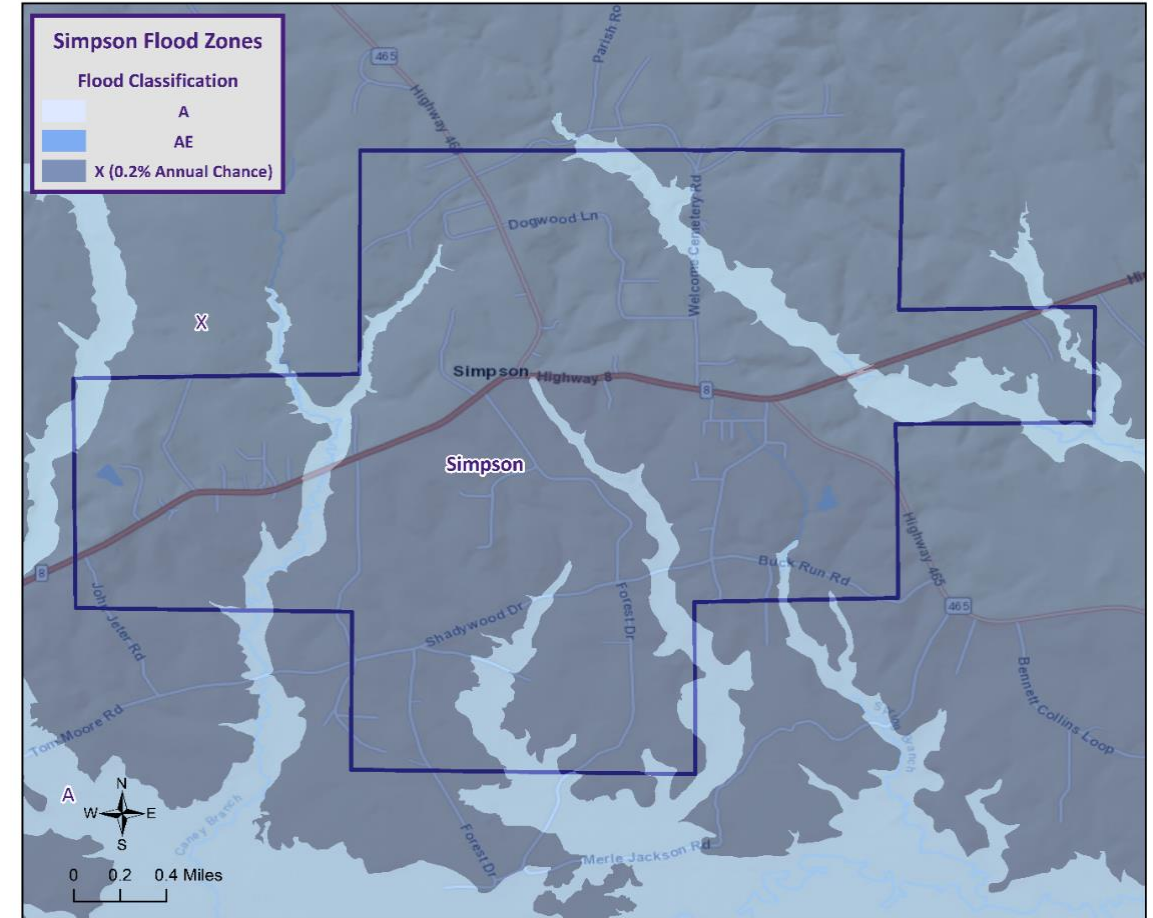
Flood Map: New Llano



Flood Map: Rosepine



Flood Map: Simpson

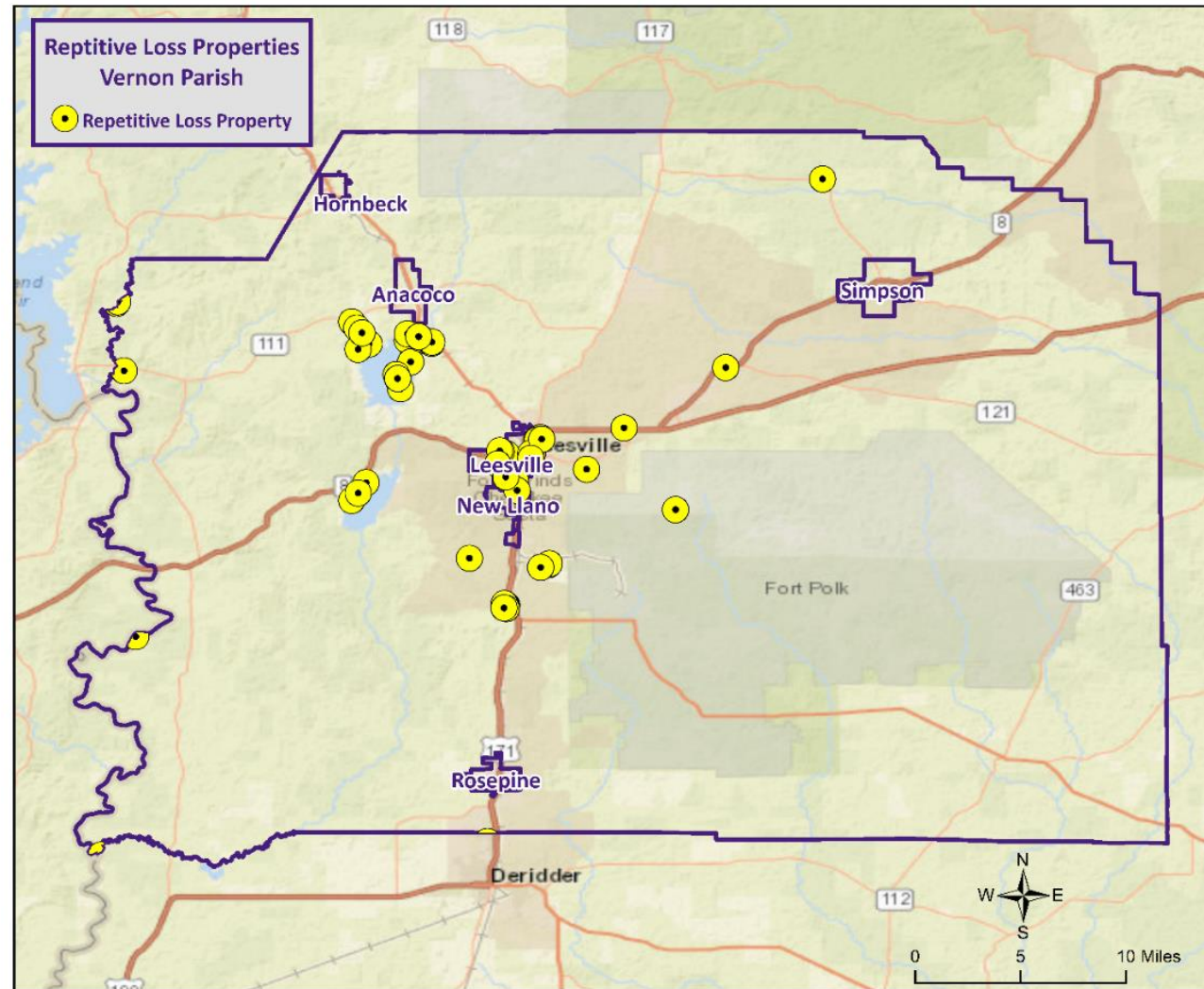


Flooding



- Some areas flood more often than other properties, even more than those in the mapped 100-year floodplain.
- FEMA defines a “repetitive loss” property as one which has received two flood insurance claim payments for at least \$1,000 over any 10-year period since 1978.
- There are currently around 160,000 repetitive loss properties in the U.S.
- These properties comprise 1% of the NFIP policy base, but they account for approximately 30% of the country’s flood insurance claim payments.

Repetitive Loss Properties

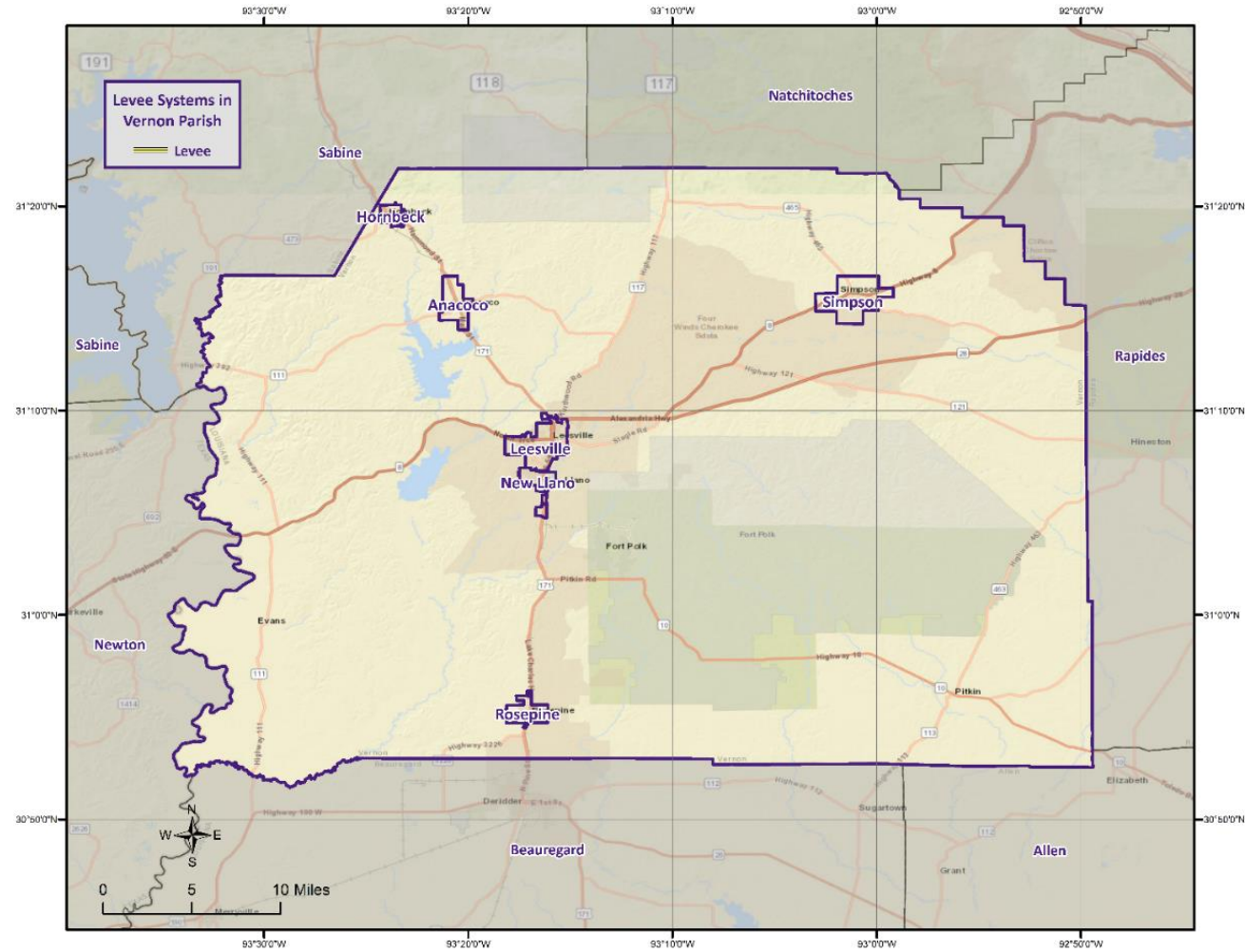


Levee Failure

- Levees are flood control barriers constructed of earth, concrete, or other materials that protect significant areas of residential, commercial, or industrial development.
- Levee failure involves the overtopping, breach, or collapse of the levee.



Levee Locations

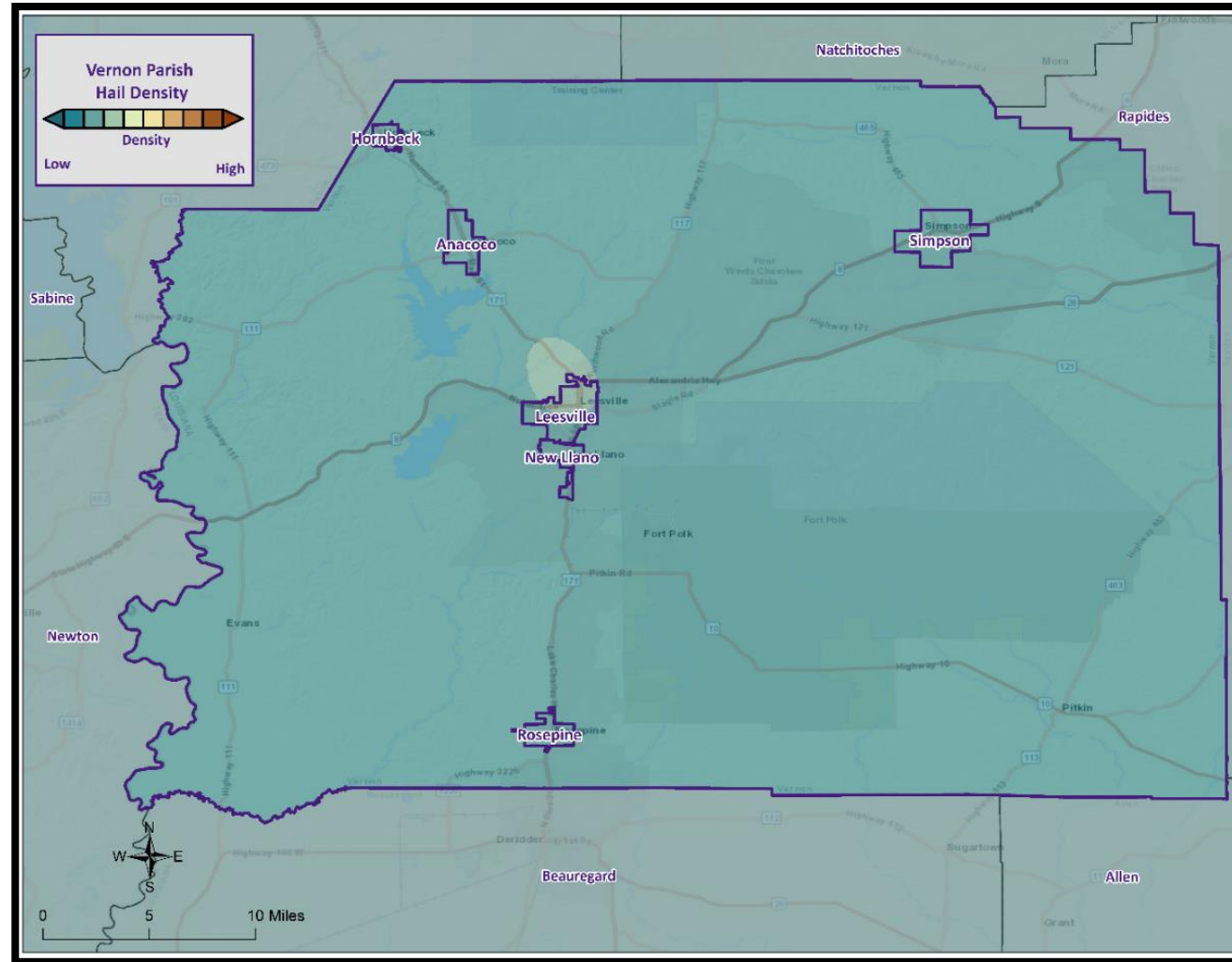


Thunderstorms

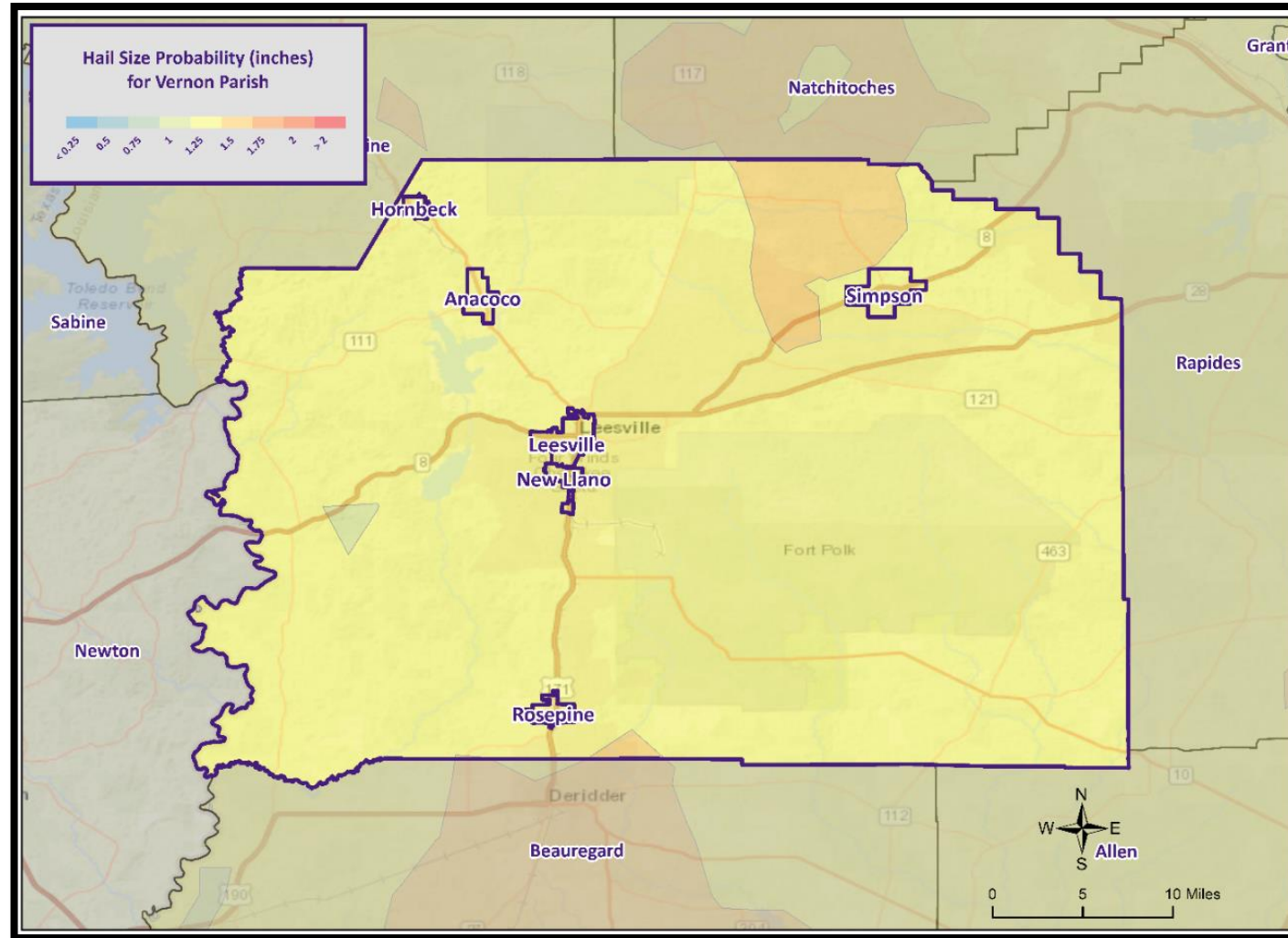
- A **thunderstorm**, also known as an **electrical storm**, a **lightning storm**, or a **thundershower**, is a type of storm characterized by the presence of lightning and its acoustic effect on the Earth's atmosphere known as thunder.
- They are usually accompanied by strong winds, heavy rain, and sometimes snow, sleet, or hail.
- Thunderstorms may line up in a series or rainband, known as a squall line. Strong or severe thunderstorms may rotate, known as supercells. While most thunderstorms move with the mean wind flow through the layer of the troposphere that they occupy, vertical wind shear causes a deviation in their course at a right angle to the wind shear direction.



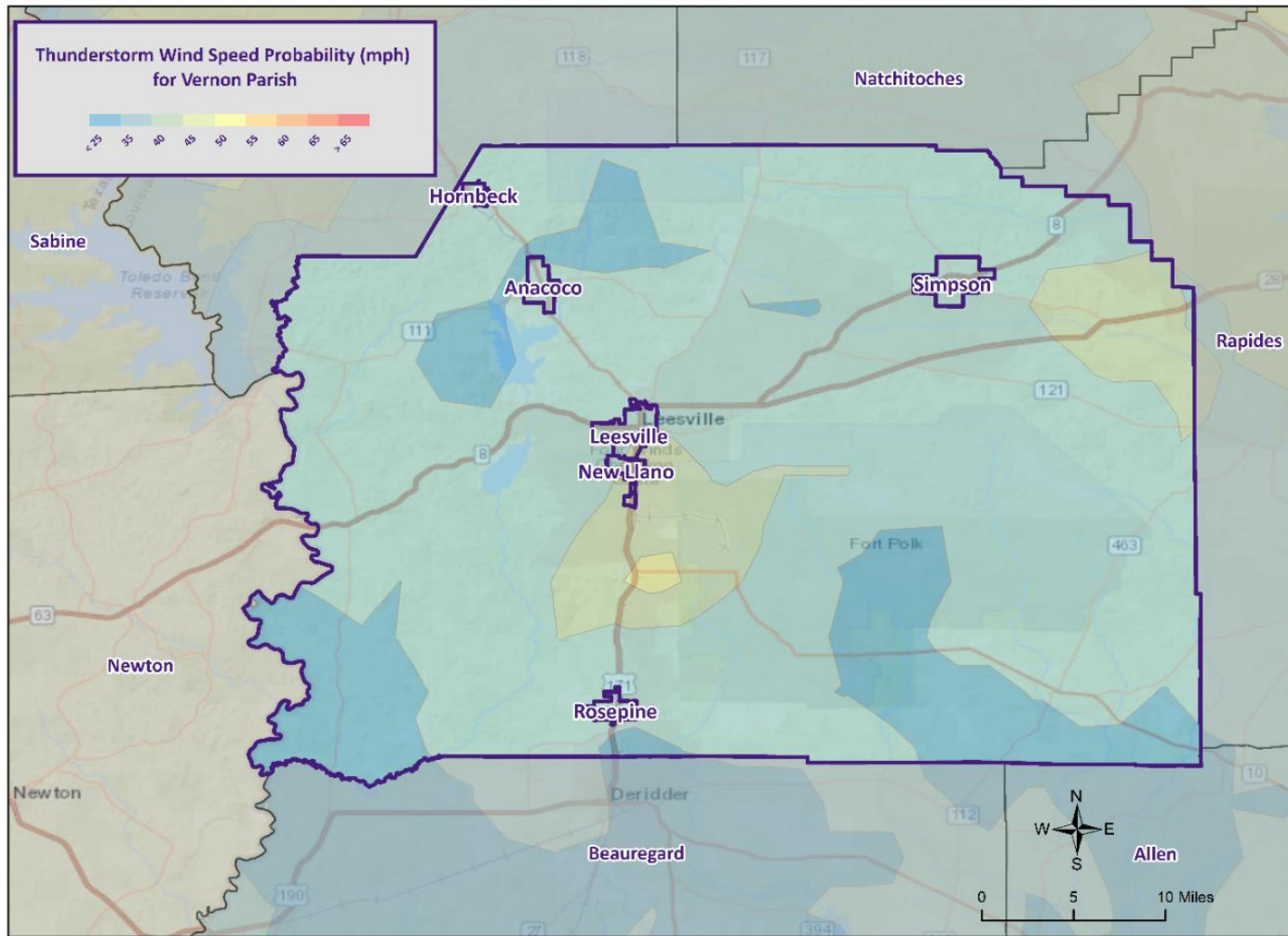
Density of Prior Hailstorms



Maximum Hail Size Probability



Maximum Wind Speed Probability



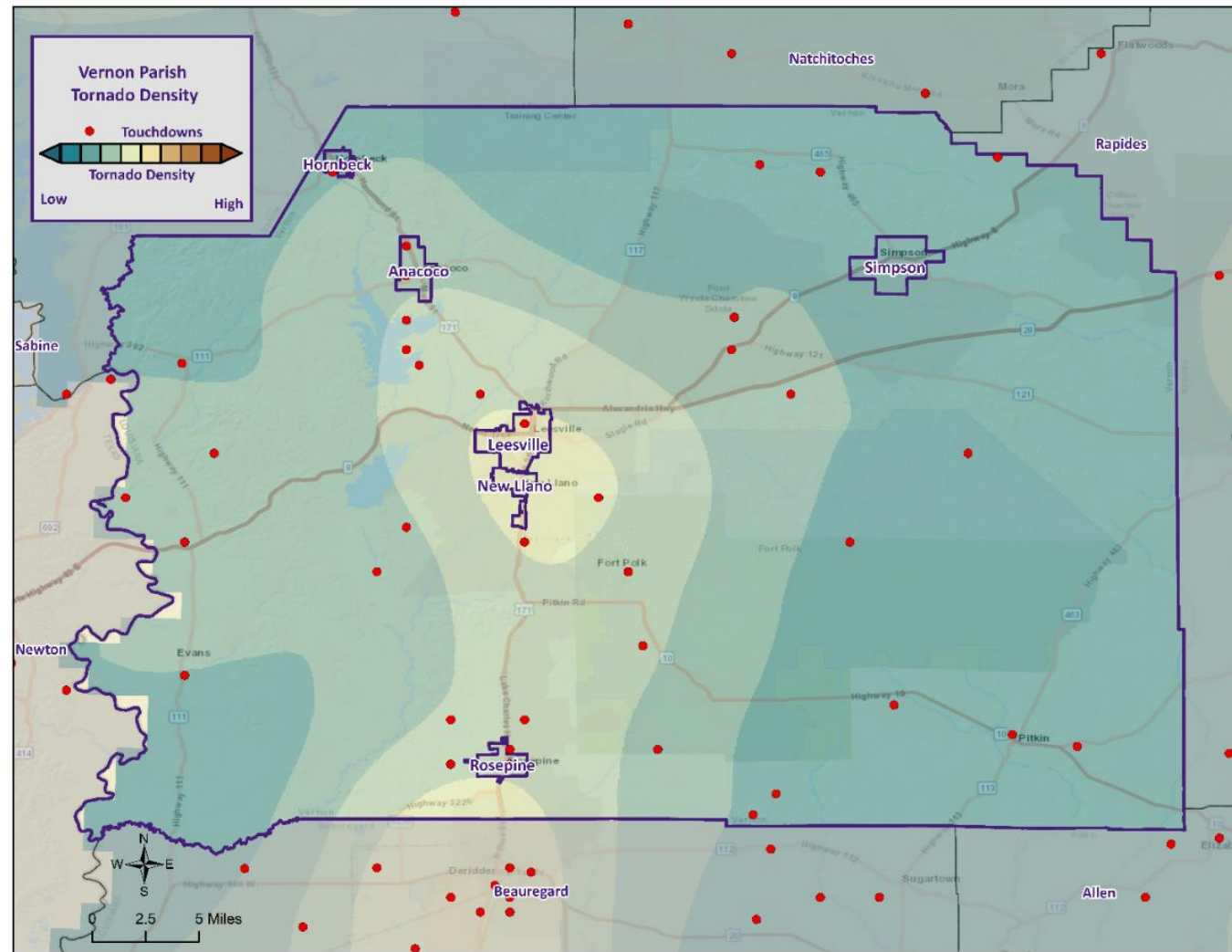
Tornadoes

- Tornadoes (also called twisters and cyclones) are rapidly rotating funnels of wind extending between storm clouds and the ground.
- Tornadoes are the most severe storms for their size, and 70% of the world's reported tornadoes occur within the continental United States.

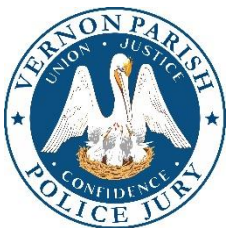
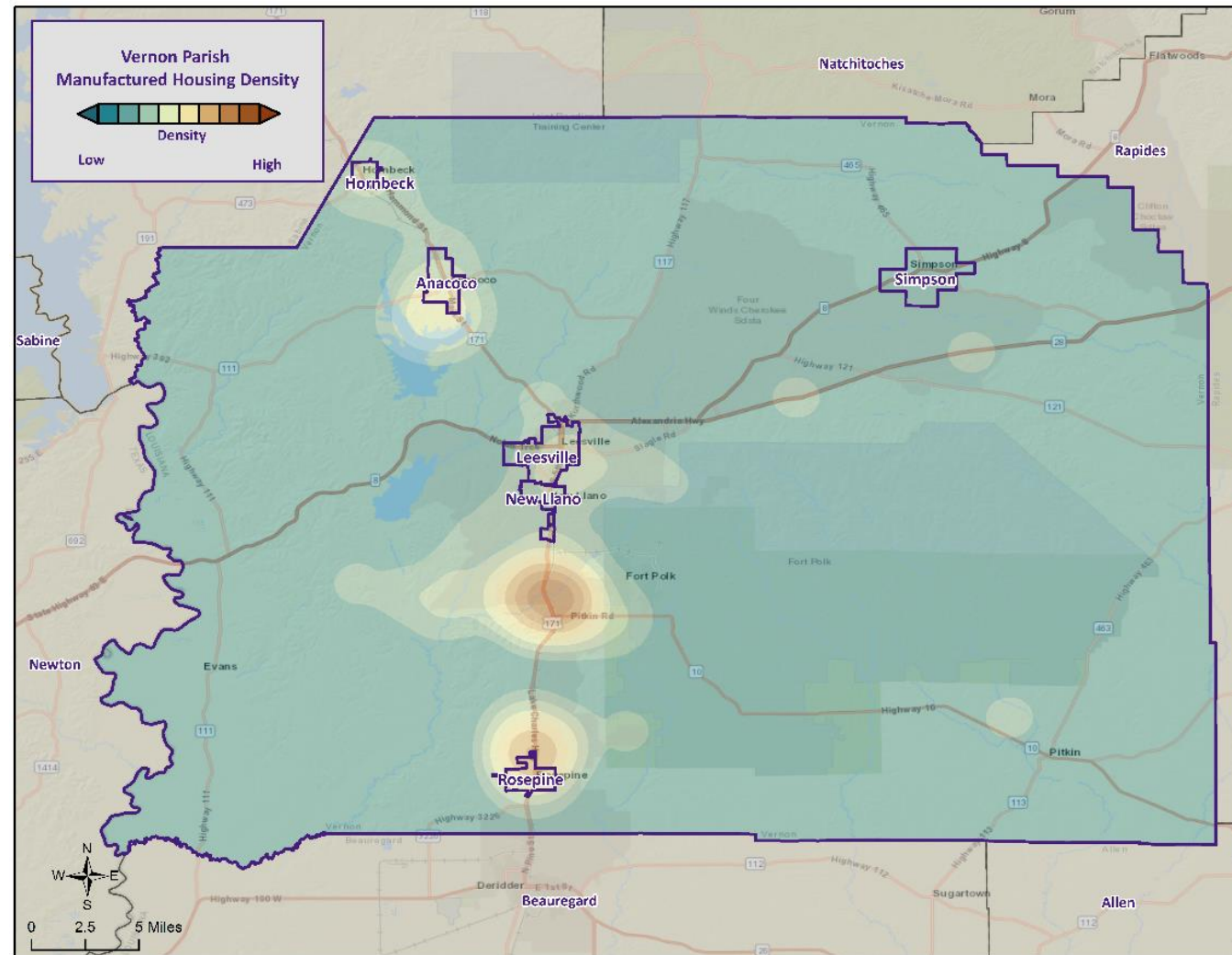
ORIGINAL FUJITA SCALE		ENHANCED FUJITA SCALE	
F5	261-318 mph	EF5	+200 mph
F4	207-260 mph	EF4	166-200 mph
F3	158-206 mph	EF3	136-165 mph
F2	113-157 mph	EF2	111-135 mph
F1	73-112 mph	EF1	86-110 mph
F0	<73 mph	EF0	65-85 mph



Tornadoes



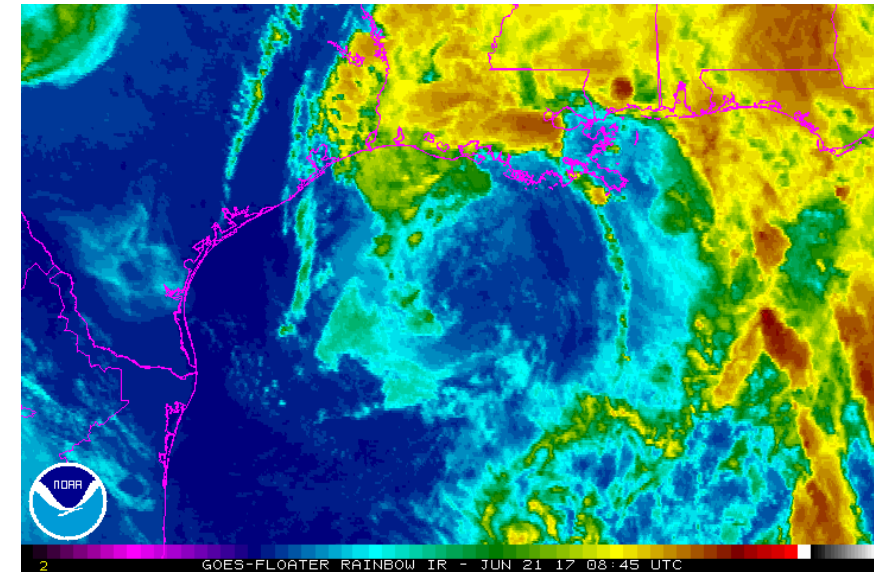
Manufactured Home Density



Tropical Cyclones

- Tropical cyclones are defined spinning, low-pressure air masses that draw surface air into their centers and attain strength ranging from weak tropical waves to the most intense hurricanes

Saffir-Simpson Hurricane Wind Scale		
	Sustained Wind Speed	Effects
Category 1	74-95 mph (119-153 km/hr)	Very dangerous winds will produce some damage. Low-lying coastal roads flooded, minor pier damage
Category 2	96-110 mph (154-177 km/hr)	Extremely dangerous winds will cause extensive damage. Major damage to exposed mobile homes, evacuation of some shoreline residents
Category 3	111-130 mph (178-209 km/hr)	Devastating damage will occur. Some structural damage to small buildings; serious flooding at coast and many smaller structures near coast destroyed
Category 4	131-155 mph (210-249 km/hr)	Catastrophic damage will occur. High risk of injury or death to people, livestock, and pets due to flying and falling debris. Long-term water shortages will increase human suffering. Most of the area will be uninhabitable for weeks or months.
Category 5	> 155 mph (249 km/hr)	Catastrophic damage will occur. People, livestock, and pets are at very high risk of injury or death from flying or falling debris. A high percentage of frame homes will be destroyed. Long-term power outages and water shortages will render area uninhabitable for weeks or months.



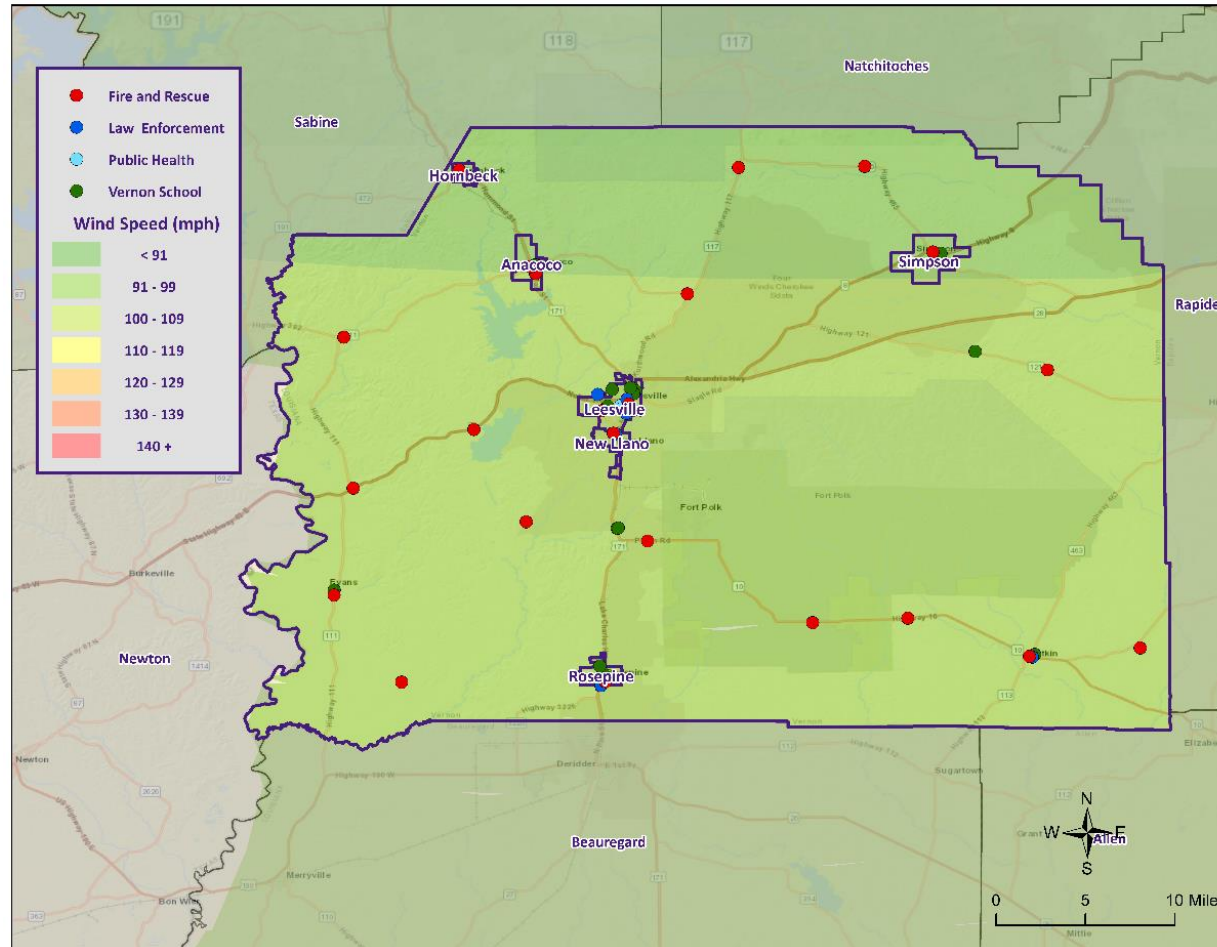


Hurricane Laura



Hurricane Delta

Wind Speed Impacts on Critical Infrastructure

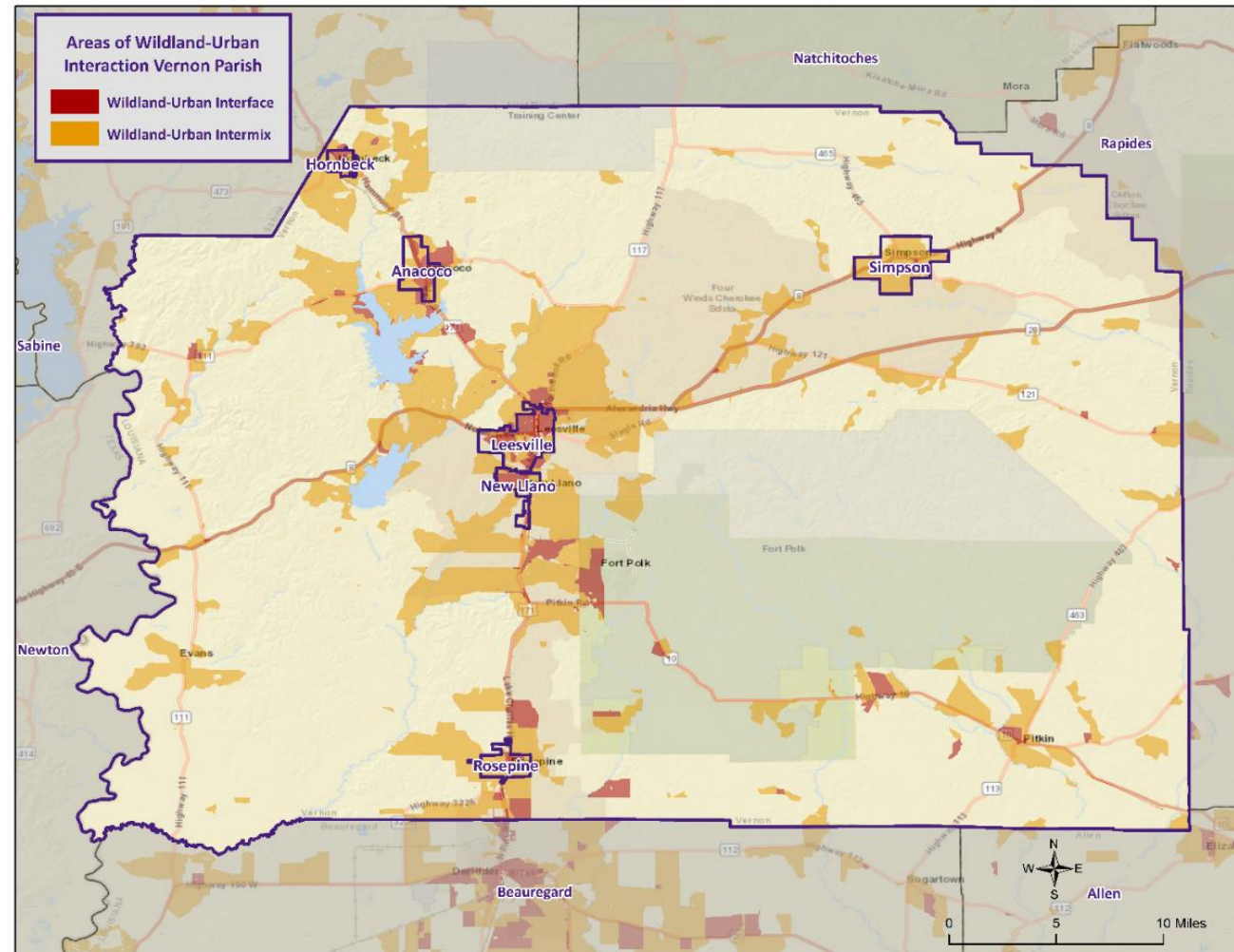




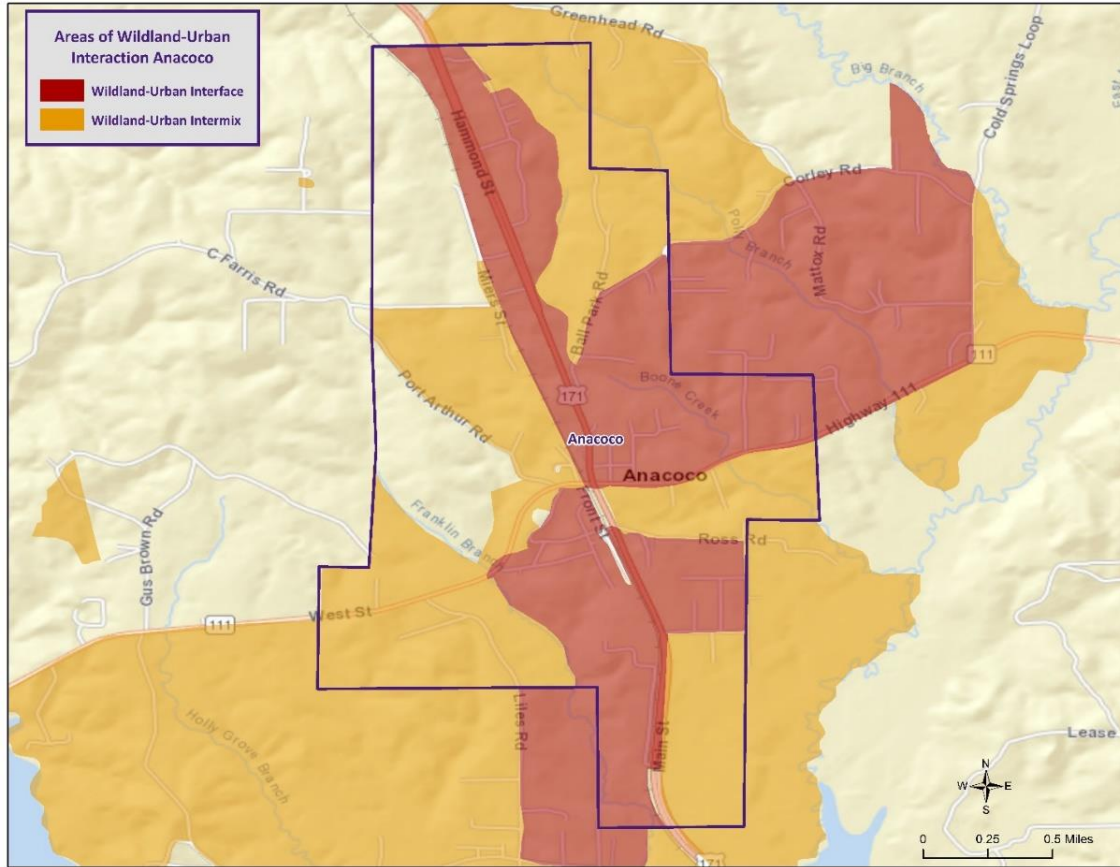
Wildfires

- A wildfire is combustion in a natural setting, marked by flames or intense heat.
- Most frequently, wildfires are ignited by lightning or unintentionally by humans. Fires set purposefully (but lawfully) are referred to as controlled fires or burns
- While loss of timber is a problem, the real hazard is when wildfires threaten developed areas. As more development moves into and next to forested areas, the hazards to people and property increases.

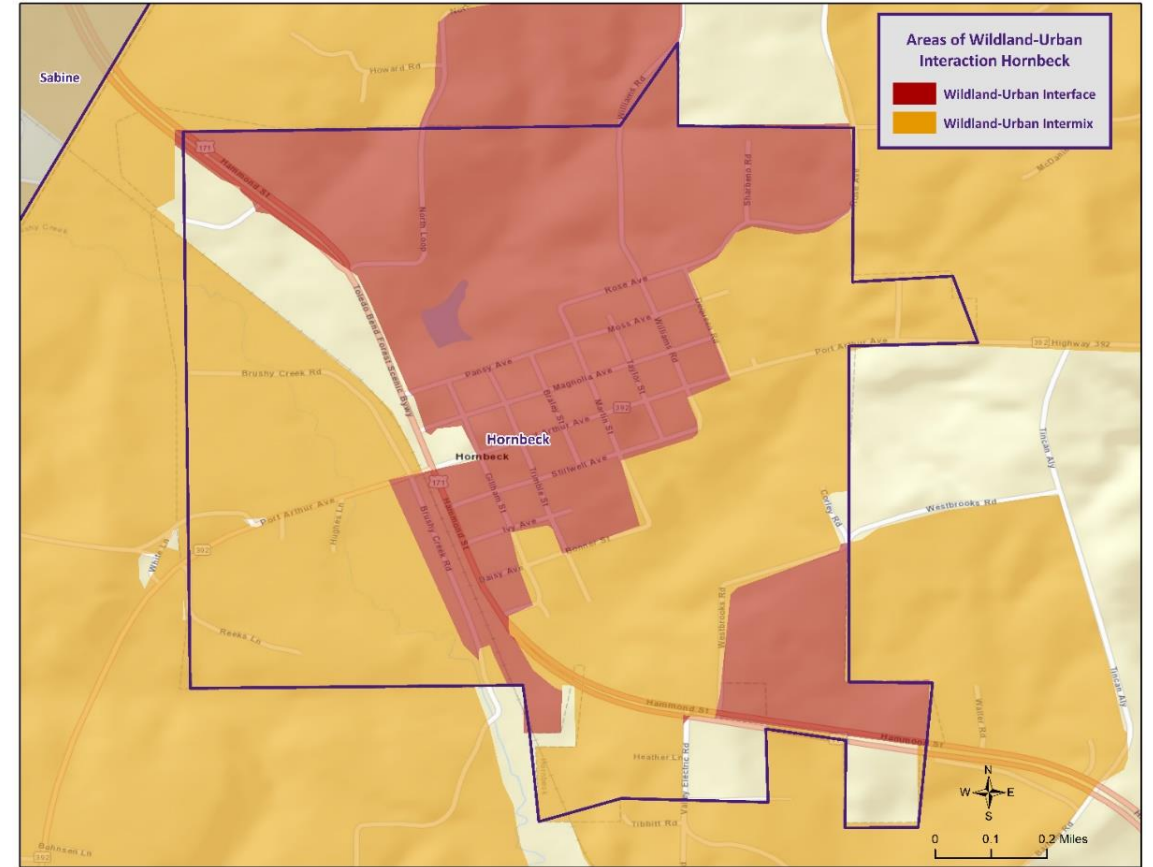
Wildland-Urban Interaction



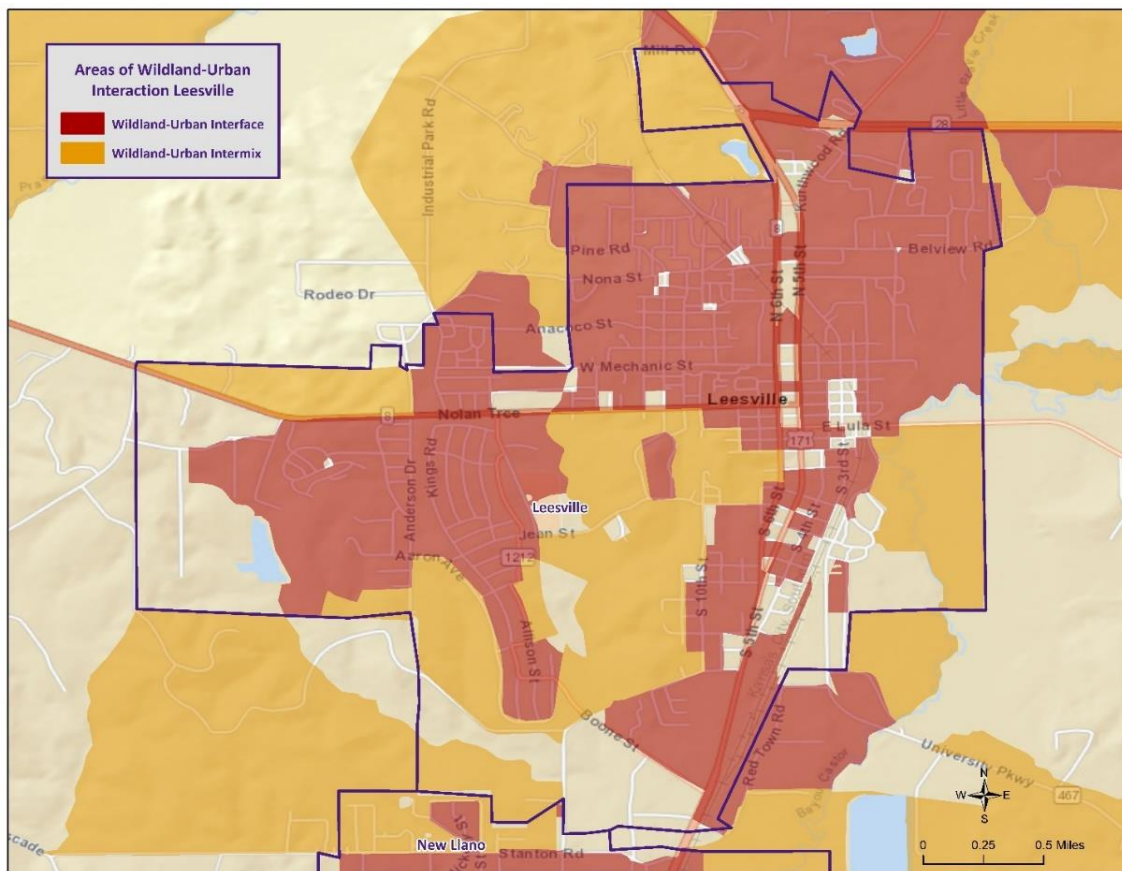
WUI: Anacoco



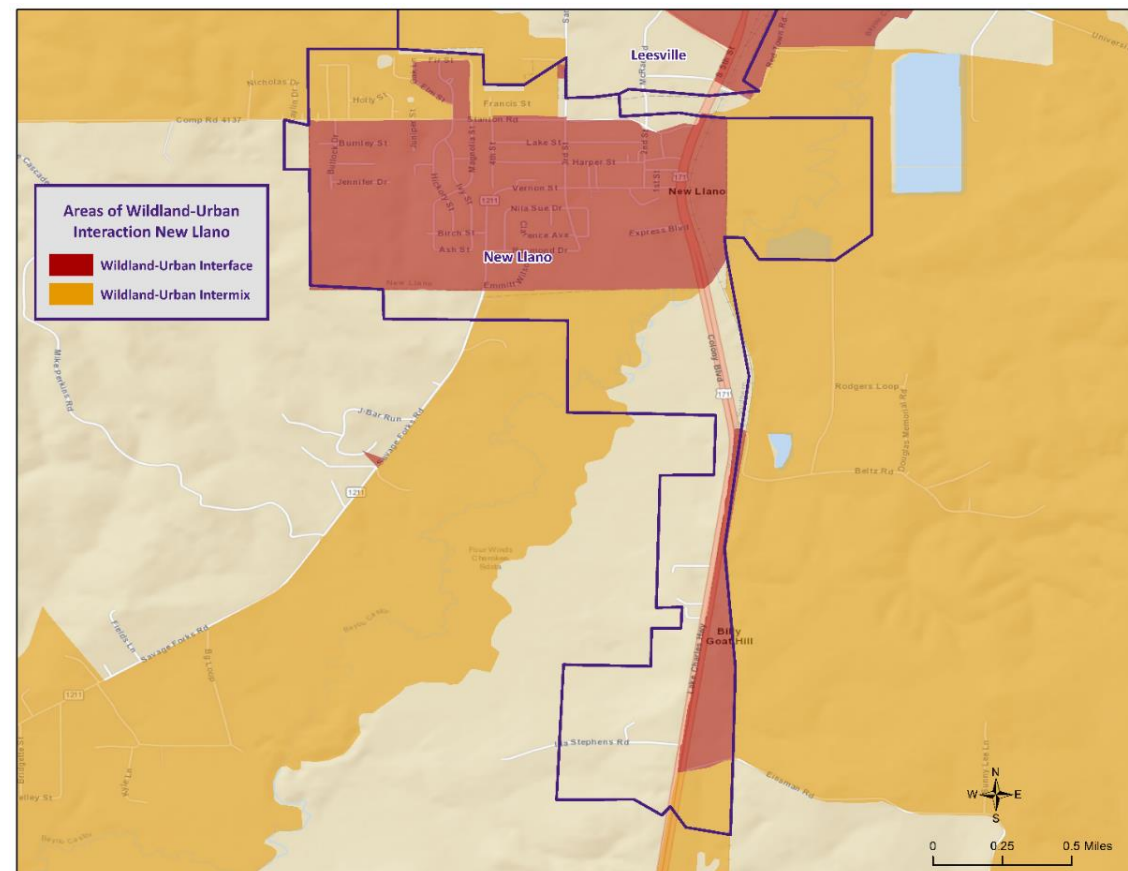
WUI: Hornbeck



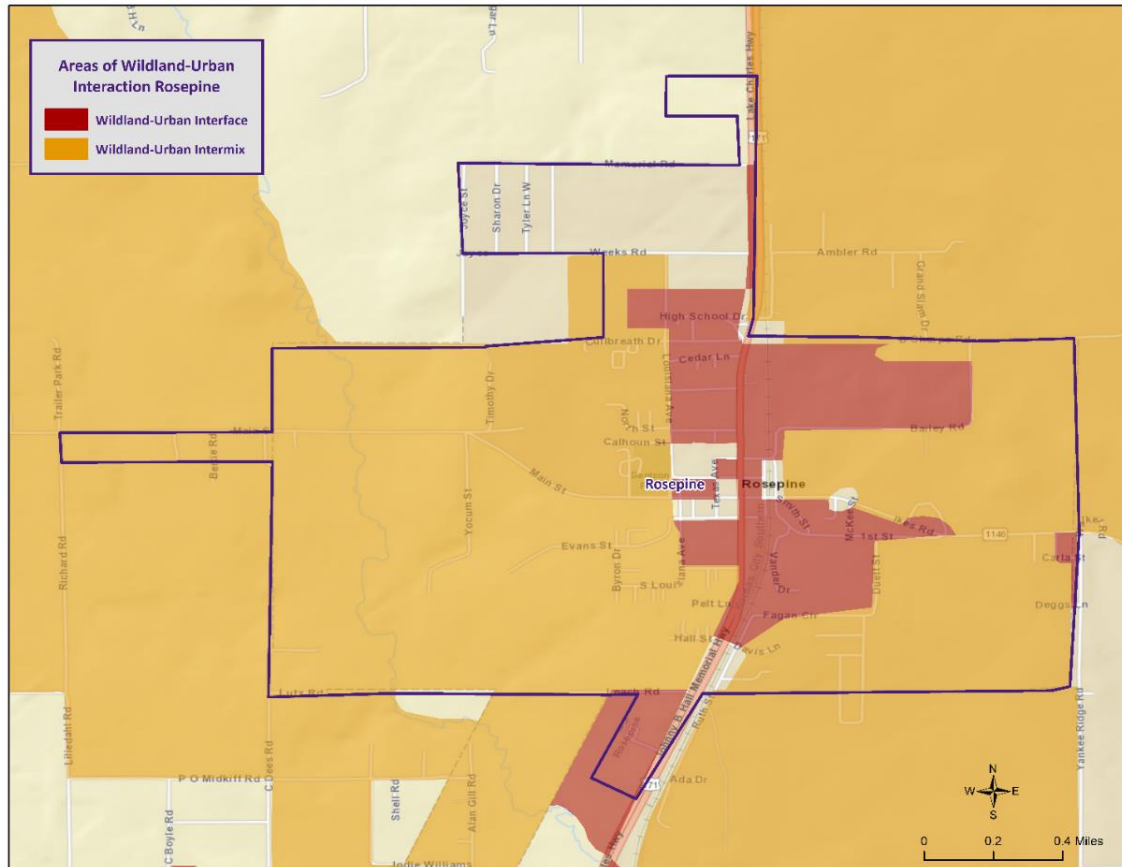
WUI: Leesville



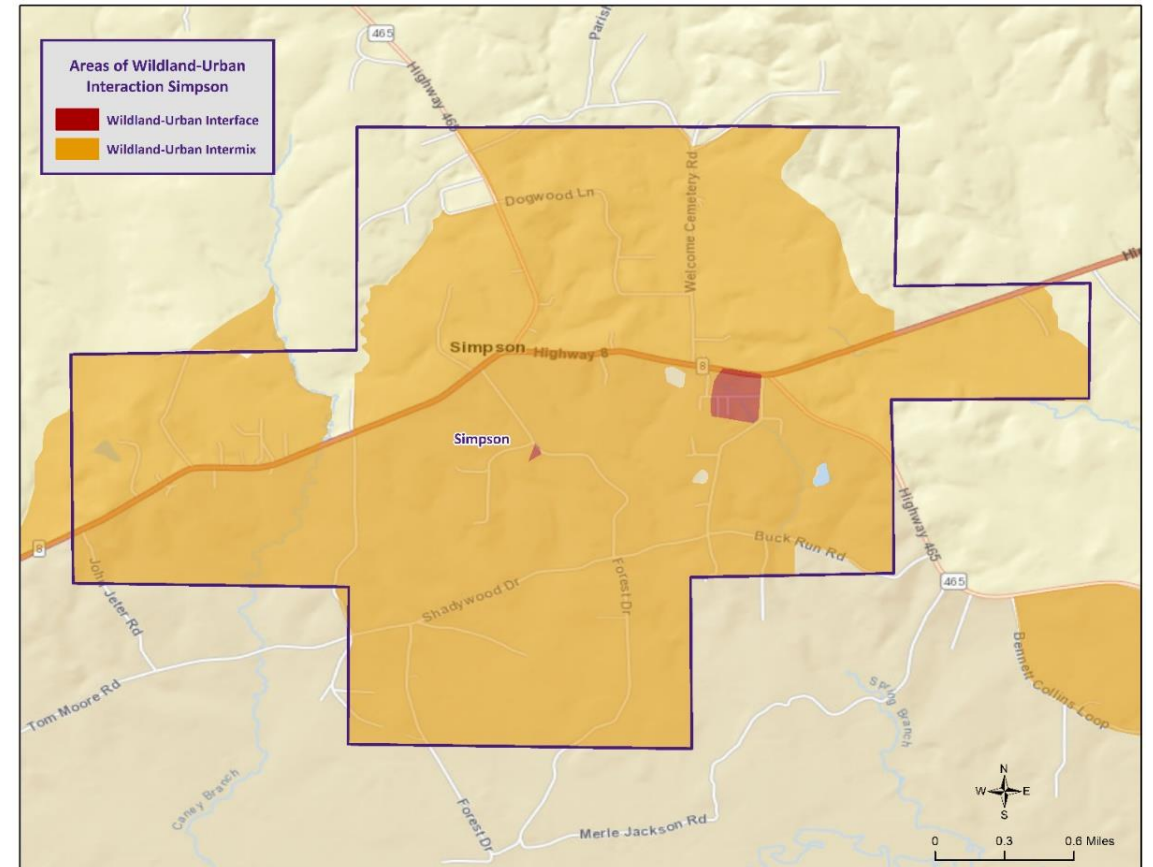
WUI: New Llano



WUI: Rosepine



WUI: Simpson



Winter Storms

- Occurs when humid air from the Gulf of Mexico meets a cold air mass from the north.
- As the temperature falls, precipitation may fall in the form of snow or sleet.
- If the ground temperature is cold enough but air temperature is above freezing, rain can freeze instantly on contact with the surface, causing massive ice storms.





Parish Mitigation Goals

- Implement Measures and Actions to Minimize Hazard Impacts Immediately Prior to, During, or in Response to Hazard Events
- Implement Measures to Protect or Reduce Damage to Structures and Assets from Future Hazards
- Encourage Sound Development Practices or Implement Other Actions to Reduce or Eliminate Impacts of Future Hazards
- Reduce Hazard Impacts through Modifications to Built or Natural Environments
- Enhance Public Awareness and Understanding of Disaster Preparedness
- Improve Communications Throughout Parish During Hazard Events



Parish Hazard Mitigation Project Update

Vernon Parish OHSEP/
Vernon Parish Government Discussion

Public Outreach Activity

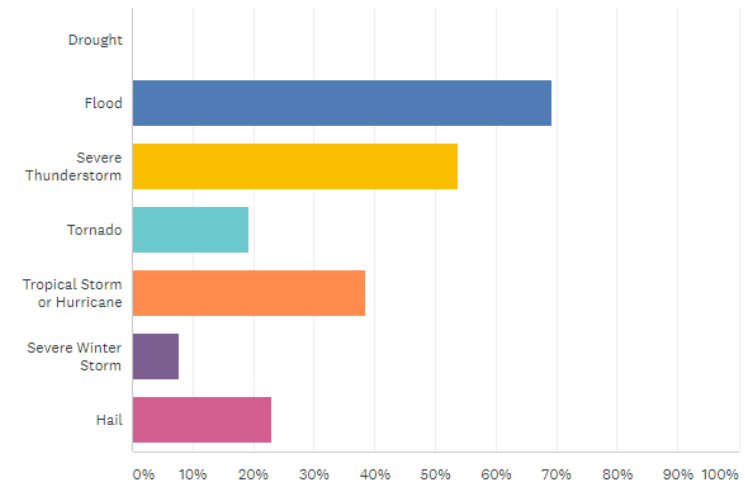
Hazard Mitigation Public Opinion Survey

<https://www.surveymonkey.com/r/VernonHM2022>



Which of these natural disasters have you or someone in your household experienced in the past five years? (Check all that apply)

Answered: 26 Skipped: 1



SDMI Hazard Mitigation Website

The screenshot shows the SDMI Hazard Mitigation Website for Vernon Parish. The header includes the LSU logo, Stephenson Disaster Management Institute, and a navigation bar with links to Home, Calendar, Mitigation Resources, Parish Plans, and Settings. The main content area is titled "Vernon Parish" and displays the "HAZARD MITIGATION" plan status. A "DEVELOPMENT STATUS" section shows a timeline with stages: PLAN DEVELOPMENT (completed), PLAN REVIEW (in progress), PLAN ADOPTION (pending), and COMPLETED (pending). Below this, "PARTICIPATING JURISDICTIONS" lists several locations including Village of Anacoco, Town of Hornbeck, City of Leesville, and Town of New Llano. A calendar section shows upcoming events: "VERNON PARISH INITIAL PLANNING COMMITTEE MEETING" on January 26 and "VERNON PARISH MITIGATION ACTION WORKSHOP" on February 16. A "PREVIOUS PLANNING RESOURCES" section provides download links for the 2016 Vernon HM Plan, Kick Off Meeting, and Public Meeting. A "SURVEY" section links to the "VERNON PARISH PUBLIC OPINION SURVEY".

LSU | Stephenson Disaster Management Institute

SDMI HOME

HAZARD MITIGATION

Home Calendar Mitigation Resources Parish Plans Settings

Vernon Parish

PLAN DUE DATE: OCTOBER 16 2021

DEVELOPMENT STATUS

PLAN DEVELOPMENT PLAN REVIEW PLAN ADOPTION COMPLETED

KICKOFF MEETING JAN 2022 TBD TBD TBD

PARTICIPATING JURISDICTIONS

- Village of Anacoco
- Town of Hornbeck
- City of Leesville
- Town of New Llano
- Town of Rosepine
- Village of Simpson
- Unincorporated Vernon Parish

JAN 26 VERNON PARISH INITIAL PLANNING COMMITTEE MEETING
Leesville, LA
10:30 AM - 11:30 AM 1/26/2022

FEB 16 VERNON PARISH MITIGATION ACTION WORKSHOP
Leesville, LA
09:00 AM - 10:30 AM 2/16/2022

PREVIOUS PLANNING RESOURCES

2016

VERNON HM PLAN
DOWNLOAD

VERNON PARISH KICK OFF MEETING
DOWNLOAD

VERNON PARISH PUBLIC MEETING
DOWNLOAD

SURVEY

ACCESS VERNON SURVEY HERE:

VERNON PARISH PUBLIC OPINION SURVEY

- Repository for materials used during update process
- <https://hmplans.sdmi.lsu.edu/Home/Parish/vernon>



Contact Us

Brant Mitchell, SDMI Director, MPA, CEM, CISSP

Chris Rippetoe, HM Program Manager, CFM

crippe2@lsu.edu

Jessie Jenkins Kirkpatrick, Emergency Management Specialist

cjenk29@lsu.edu



