



# **Webster Parish Hazard Mitigation Plan Update**

June 23, 2021

Minden, LA

# Introductions

- Webster OHSEP and Parish Officials
- Mitigation Steering Committee Members (Roll Call by Parish)
- SDMI
- GOHSEP

# Who is SDMI?

- Stephenson Disaster Management Institute (SDMI) at Louisiana State University
- Non-Academic, Applied Research Unit on campus under the SNCSRT umbrella.
- Founded by Toni and Emmet Stephenson





# The Hazard Mitigation Plan: What is in it for us?

# Hazard Mitigation Is.....

- Any action taken to reduce long term risk to life and property;
- On-going process that occurs before, during, and after disasters;
- Mitigation actions help prevent damage to a community's infrastructure, economic, cultural and environmental assets;
- Minimize operational downtime and accelerate recovery of government and the private sector after an event;
- Implementation of mitigation actions leads to building stronger, safer and smarter!



Hazard Mitigation Planning is a process that identifies natural hazard risks and develops strategies to reduce these risks.



# Planning Process

# Hazard Mitigation Plan Update Requirements

- The plan must be updated every 5 years
- Re-assess hazard identification and risk assessment
  - Consider any changes since the last plan update, and address events that have occurred since the last plan;
- Incorporate local planning efforts;
- Report mitigation strategy (projects) progress and discuss adjustments;
- Address any weaknesses identified in the previous plan review.
- Must be multijurisdictional

# Federal Requirements

- Disaster Mitigation Act of 2000 (DMA 2000)
  - Section 322 of the Act specifically addresses mitigation planning and requires state and local governments to prepare multi-hazard migration plans as a precondition for receiving FEMA mitigation project grants.
- Title 44 Code of Federal Regulations (CFR) §201.6 for FEMA approval and eligibility to apply for FEMA Hazard Mitigation Assistance

# Expectations of the Planning Committee

- Parish will serve as the main liaison/POC throughout the planning process
- Each jurisdiction **MUST** show active participation in the planning process by the following:
  - Completing state required worksheets;
  - Identifying and updating jurisdiction specific mitigation actions (projects);
  - Have representation at meetings;
  - Report to community and gather feedback from appropriate agencies;
  - Adopt the final plan.

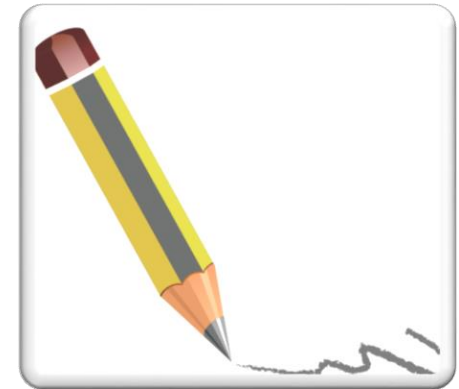


# WEBSTER

## PARISH HAZARD MITIGATION UPDATE – 2016



# Plan Development



# Plan Layout

- Section 1: Introduction
  - Updated demographics
  - Economics
  - Update parish/jurisdiction descriptions
- Section 2: Hazard Identification and Parish-wide Risk Assessment
- Section 3: **Capability Assessment**
- Section 4: **Mitigation Strategies**
  - **New actions**
  - **Action updates**
  - Survey results

# Plan Layout

- Appendix A: Planning Process
- Appendix B: Plan Maintenance
- Appendix C: Parish Essential Facilities
- Appendix D: Plan Adoption
- Appendix E: State Required Worksheets

# Section 1: Introduction

- Updated demographics
  - Census information
- Economic update
  - New facilities or companies that are leading to economic impact to the parish?
- Parish/Jurisdiction descriptive updates



# Section 2: Hazard Identification and Risk Assessment

- Based on currently profiled risks
- Any newly identified risks
- Prevalent Hazards
- Previous occurrences
- Probability of future events
- Assets Inventory
- Essential Facilities
- Hazard Impact
- Future Development
- Future Hazard Impacts
- Zoning and Land Use
- Hazard Profiles

## Section 2: Hazard Identification and Risk Assessment (Previous Update)

- Flooding
- Tropical Cyclones
- Tornadoes
- Thunderstorms
- Winter Storms
- Drought
- Sinkholes
- Wildfires
- Extreme Heat



# Section 3: Capabilities Assessment

**Primary types of capabilities for reducing long-term vulnerability through mitigation planning are:**

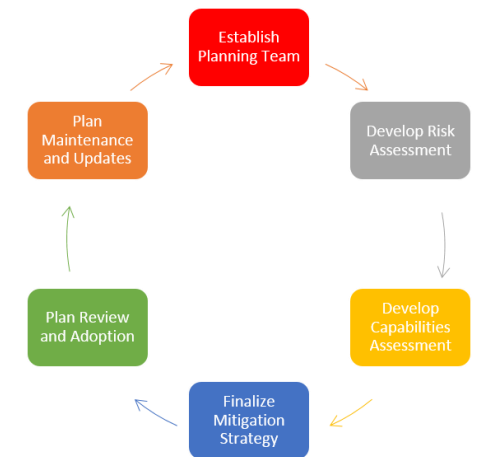
- Planning and regulatory
- Administrative and technical
- Financial
- Educational and outreach



# Section 4: Mitigation Strategy

## Goals

- Reduce or prevent injury and loss of life
- Reduce or prevent damage to property and material assets
- Reduce or prevent future damage to critical facilities essential for protection and public safety including: fire, rescue, law enforcement, communications, command and control
- Reduce or prevent future damage to special facilities and commercial facilities including: schools, nursing homes, hospitals and clinics, prisons, historical and cultural resources
- Reduce or prevent future damage to infrastructure including: stormwater conveyance structures, utility systems, pipelines, railroads, highways, bridges, and waterways
- Reduce or prevent future damage to facilities that if damaged, could endanger people, damage the environment, or harm the local economy.



# Section 4: Mitigation Action Update and New Mitigation Actions

- Mitigation Action Update on old actions/projects
- New Mitigation Actions Identification for 2021 Update for each jurisdiction



**\*\* We will discuss Mitigation Actions with the steering committee at a later date.**

Mitigation Action Update		
Jurisdiction-Specific Action	Jurisdiction	Status
Construction of emergency shelters	Webster Unincorporated	Completed (one shelter)
Future development building standards improvements; Improve building standards by adopting the current International Building Codes by ordinance, which would result in additional techniques to harden structures.	Webster Unincorporated	Completed
Develop a master drainage plan which will evaluate drainage projects at major drainage laterals to determine best method of increasing drainage capacity. Implement recommended projects resulting from drainage plan; Improve drainage by adding new drainage pumps, enlarging culverts, replacing/improving any substandard bridges, and other drainage projects where necessary.	Webster Unincorporated, City of Minden, Town of Cullen	Ongoing
Implement mitigation measures that will alleviate road erosion within the parish.	Webster Unincorporated	Ongoing

# Appendix A: Planning Process

- Overview of planning process
- Meeting documentation and summaries
- Discussion of integration of neighboring community participation
- Discussion of integration of other parish and jurisdiction plans to the HM Update
- Steering committee members identified

## Appendix B: Plan Maintenance

- Review of HM plan **annual** maintenance by the Webster Parish OHSEP Director.
- Assign responsible parties for review and edits of the plan



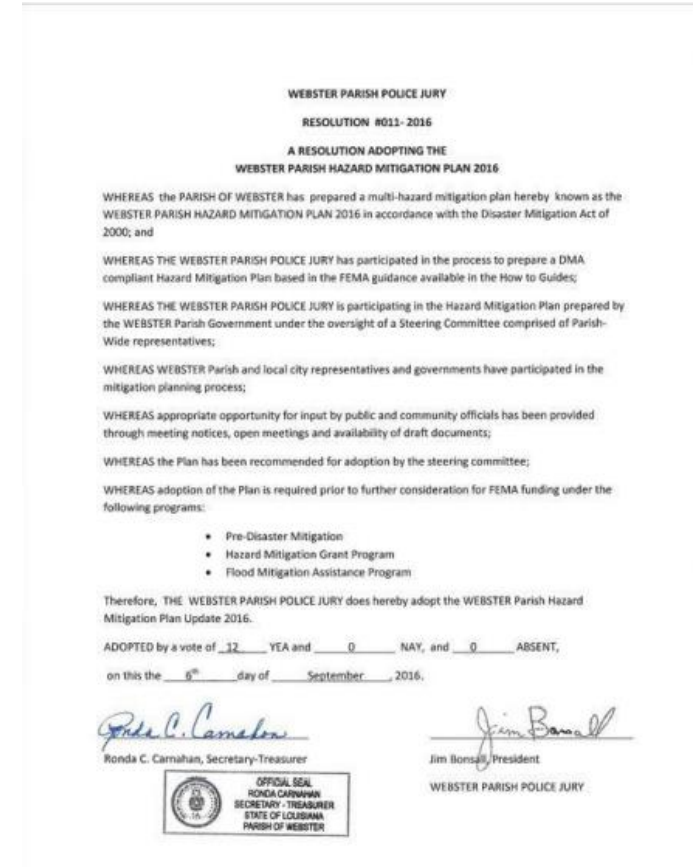
# Appendix C: Critical Facilities

- Updated list of essential facilities by jurisdiction
- Will identify which hazards within the risk assessment pose a threat to each facility
- Facilities must be parish or city owned



# Appendix D: Plan Adoption

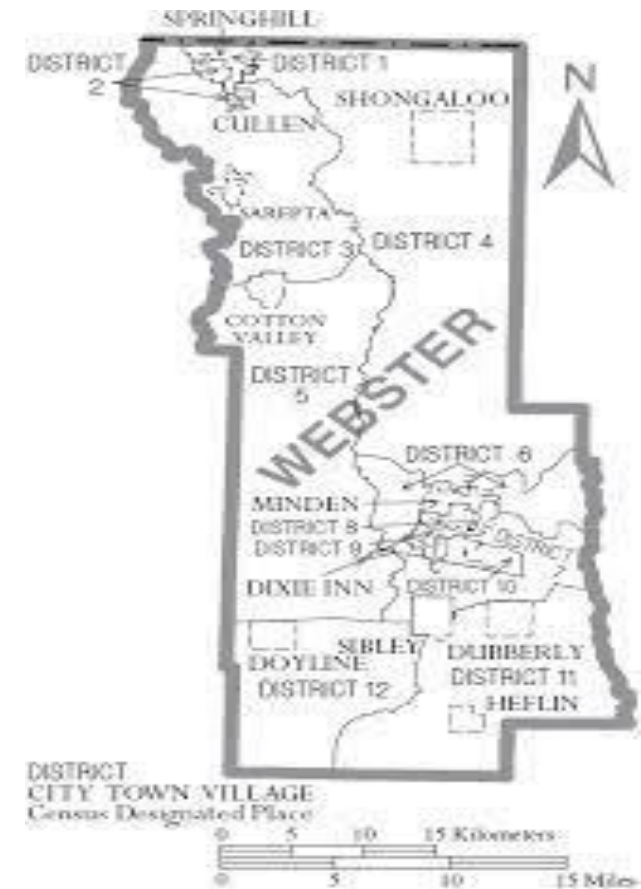
- Parish council and city council resolutions must be adopted, signed, and placed into the final planning document – **AFTER the plan is issued APA.**
- Templates can be provided if needed
- As a planning team member, be aware of the policies for your jurisdiction



# Appendix E: State Required Worksheets

Each jurisdiction **MUST** fill these out:

- Capability Assessment
- NFIP Worksheet
- Critical Facilities/Building Inventory
- Vulnerable Population



# Appendix E: State Required Worksheet – Capability Assessment

Worksheet 4.1: Capability Assessment Worksheet - Webster		
Local mitigation capabilities are existing authorities, policies and resources that reduce hazard impacts or that could be used to implement hazard mitigation activities. Please complete the tables and questions in the worksheet as completely as possible.		
<b>Planning and Regulatory</b>		
Please indicate which of the following plans and regulatory capabilities your jurisdiction has in place.		
<b>Plans</b>	<b>Yes / No</b>	<b>Comments</b>
Comprehensive / Master Plan		
Capital Improvements Plan		
Economic Development Plan		
Local Emergency Operations Plan		
Continuity of Operations Plan		
Transportation Plan		
Stormwater Management Plan		
Community Wildfire Protection Plan		
Other plans (redevelopment, recovery, coastal zone management)		
<b>Building Code, Permitting and Inspections</b>	<b>Yes / No</b>	
Building Code		
Building Code Effectiveness Grading Schedule (BCEGS) Score		
Fire Department ISO/PIAL rating		
Site plan review requirements		
<b>Land Use Planning and Ordinances</b>	<b>Yes / No</b>	
Zoning Ordinance		
Subdivision Ordinance		
Floodplain Ordinance		
Natural Hazard Specific Ordinance (stormwater, steep slope, wildfire)		
Flood Insurance Rate Maps		
Acquisition of land for open space and public recreation uses		
Other		
<b>Administration and Technical</b>		

*Place answers in Yes/No column, add comments if necessary (i.e. what year the plan was updated last)*

# Appendix E: State Required Worksheets – Building Inventory

[illegible]

# Appendix E: State Required Worksheets – Critical Facilities and Vulnerable Populations

## Vulnerable Populations Worksheet

Webster Parish

Name	Street	City	Zip Code	Latitude	Longitude
All Hospitals (Private or Public)					
Minden Medical Center	1 Medical Plaza Pl	Minden	71055	32.8681	-91.3825
* There are no Hospitals located in the Town of XXXX					
Nursing Homes (Private or Public)					
* There are no Nursing Homes located in the Town of XXXX					

# Plan Update Worksheet – NFIP

ELEMENT F: STATE REQUIREMENT		
National Flood Insurance Program (NFIP)		
Parish: Webster		
Insurance Summary		Comments
How many NFIP policies are in the community?		
What is the total premium and coverage?		
How many claims have been paid in the community? What is the total amount of paid claims? How many of the claims were for substantial damage?		
How many structures are exposed to flood risk with in the community?		
Describe any areas of flood risk with limited NFIP policy coverage.		
Staff Resources		
Is the Community FPA or NFIP Coordinator certified?		
Is flood plain management an auxiliary function?		
Provide an explanation of NFIP administration services (e.g., permit review, GIS, education or outreach, inspections, engineering capability)		
What are the barriers to running an effective NFIP program in the community, if any?		
Compliance History		
Is the community in good standing with the NFIP?		
Are there any outstanding compliance issues(i.e., current violations)?		
When was the most recent Community Assistance Visit (CAV) or Community Assistance Contact(CAC)?		
Is a CAV or CAC scheduled or needed? If so when?		

- FEMA can provide this information, or local /parish floodplain managers

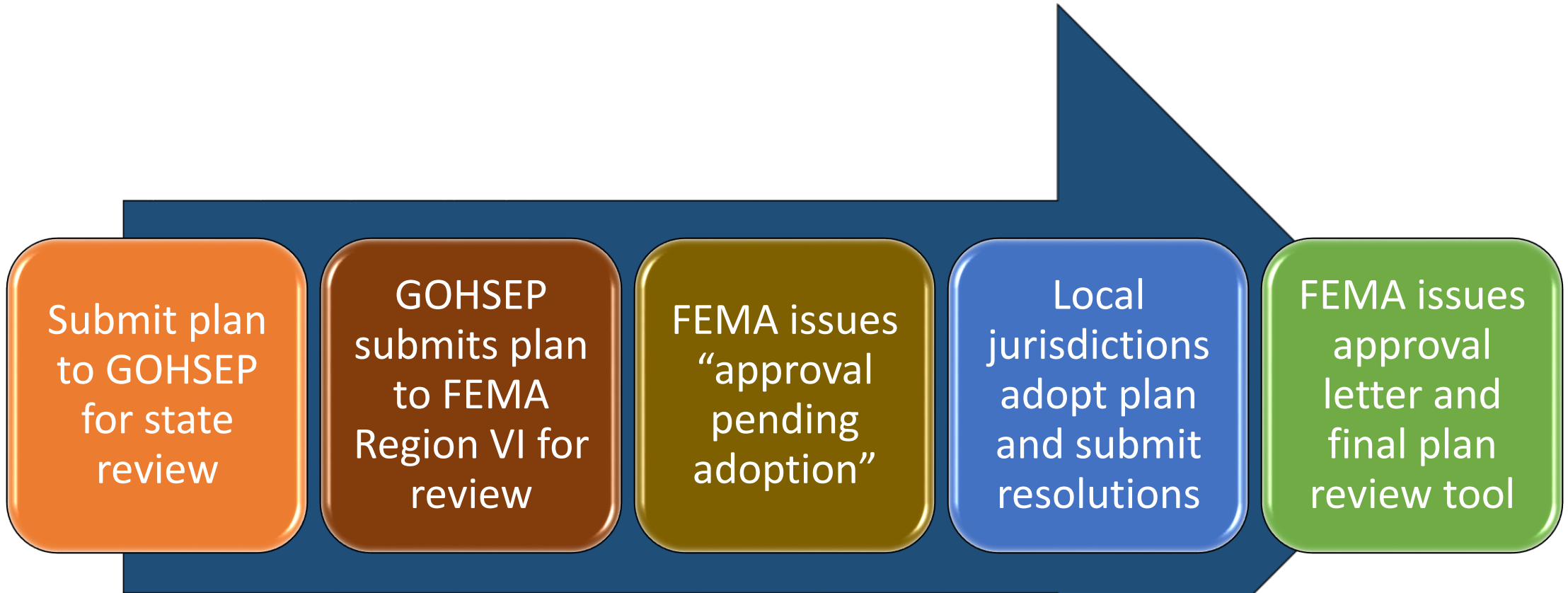


# Parish Mitigation Survey

- Collects information from citizens regarding their perceptions of local hazards and mitigation efforts
- Results will be included in the plan if there are enough responses
- <https://www.surveymonkey.com/r/WebsterHM2021>



# Plan Approval Process



The plan will be subject to revisions as it moves through the review process.

# The Final Product

- FEMA approved Hazard Mitigation Plan
  - Meets requirements of Title 44 Code of Regulations (CFR) §201.6 for approval and eligibility to apply for FEMA Hazard Mitigation Assistance grant programs.
  - A hazard mitigation project strategy for each jurisdiction
  - A comprehensive list of jurisdiction owned properties
  - Assessment of natural disaster-related risks and vulnerabilities

# Next Steps

- Worksheet and Mitigation Actions due dates
- Identify Neighboring Community
- Next meetings?
  - Mitigation Action Workshop (Optional)
  - Risk Assessment Review with Committee
  - Public Meeting
- Draft Plan to FEMA
  - 1-2 weeks after the public meeting
- Adoptions
  - AFTER the FEMA Review!!!



# Contact Us

- **Brant Mitchell, SDMI Director, CEM**
  - [bmitch9@lsu.edu](mailto:bmitch9@lsu.edu)
  - (225) 578-5939
- **Lauren Stevens, Associate Director, MEPP**
  - [lstevens@lsu.edu](mailto:lstevens@lsu.edu)
  - (225) 578-0502
- **Chris Rippetoe, HM Project Manager, CFM**
  - [crippe2@lsu.edu](mailto:crippe2@lsu.edu)
  - (225) 578-6667
- **Anna Daigle, Emergency Management Specialist**
  - [adaig35@lsu.edu](mailto:adaig35@lsu.edu)

